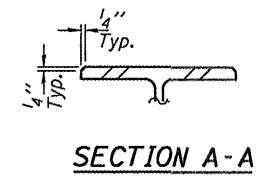
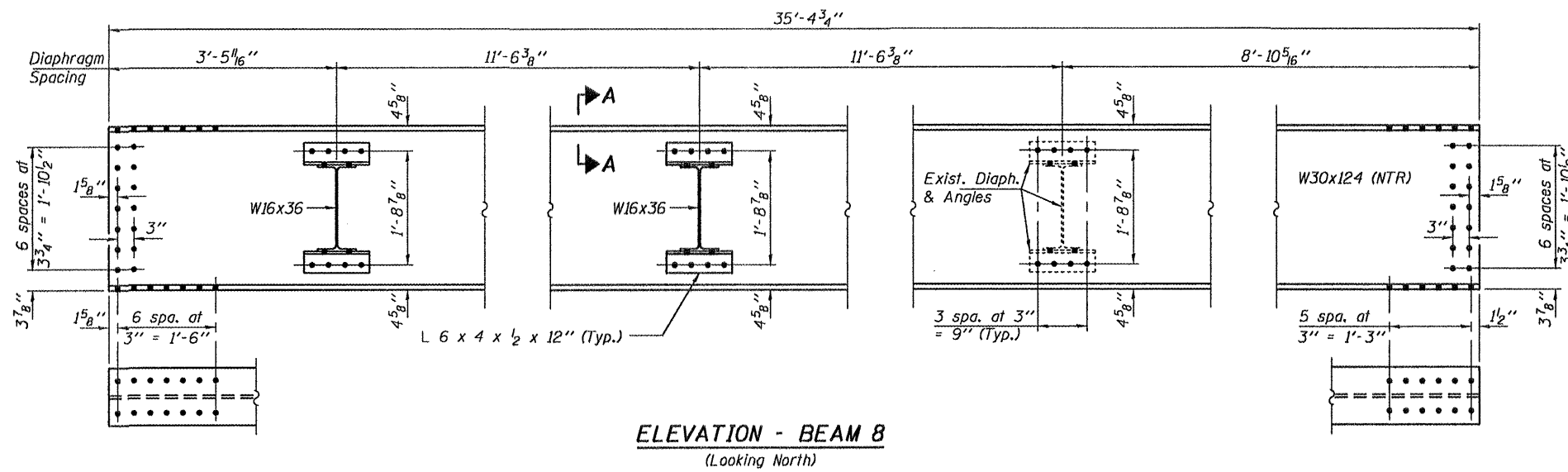
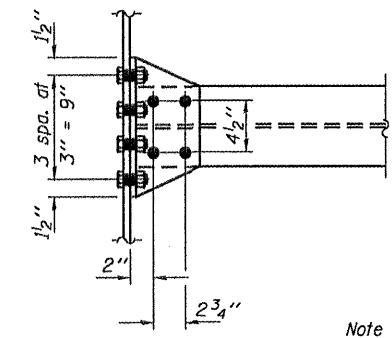


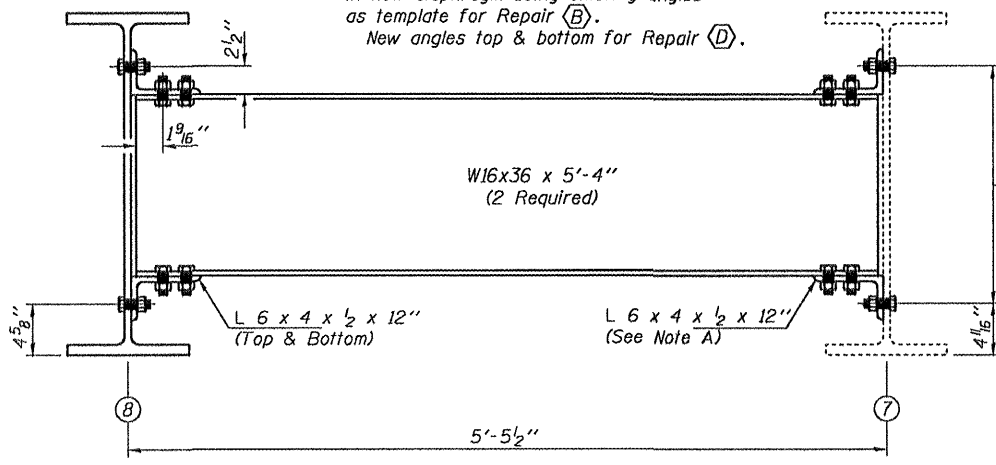
STATE OF ILLINOIS
DEPARTMENT OF TRANSPORTATION



Notes:
Natural camber of new beam shall be placed upward for fabrication.
Diaphragm connection holes shall be 15/16" φ for 3/4" φ bolts. Two hardened washers shall be required at diaphragm connections.
Reuse existing 3/4" flange and 3/8" web splice l's. All bolts to be removed and replaced.
The cost of field drilling required for installation of the steel members is included with Furnishing and Erecting Structural Steel.



Note A:
Use existing angles and field drill holes in new diaphragm using existing angles as template for Repair (B).
New angles top & bottom for Repair (D).



Field drill holes in Beam 7 using angles as template. (Repair (D) only.)

BILL OF MATERIAL

ITEM	UNIT	QUANTITY
Furnishing and Erecting Structural Steel	Pound	5370

STRUCTURAL STEEL DETAILS
SN 016-2121

DESIGNED	ATH
CHECKED	GGE
DRAWN	Kyle M. Steffen
CHECKED	ATH GGE

APRIL 27, 2009
EXAMINED *Carl Krueger*
ENGINEER OF STRUCTURAL SERVICES
PASSED *Ralph E. Anderson*
ENGINEER OF BRIDGES AND STRUCTURES

NEW DIAPHRAGM & ANGLES
Repairs (B)(C)(D)

SHEET NO. 3 5 SHEETS	F.A.P. RTE. 332	SECTION 0101.1 I-3	COUNTY COOK	TOTAL SHEETS 11	SHEET NO. 8
	CONTRACT NO. 60G33				
FED. ROAD DIST. NO. ILLINOIS FED. AID PROJECT					