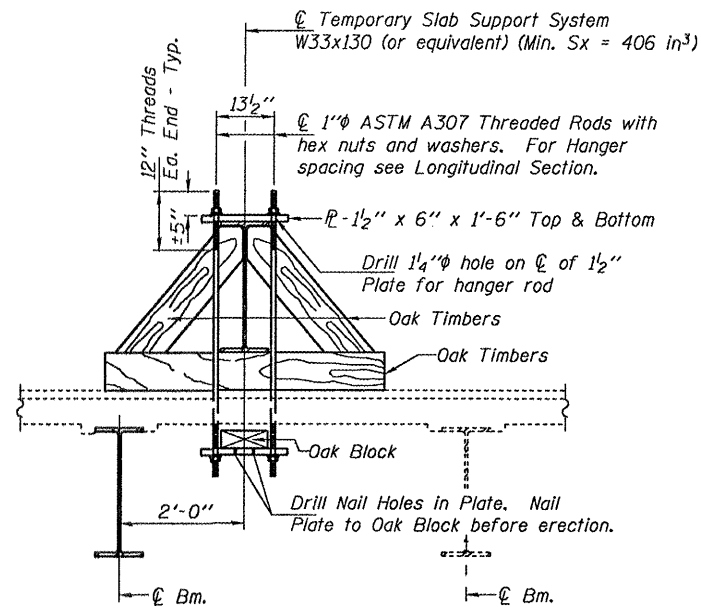
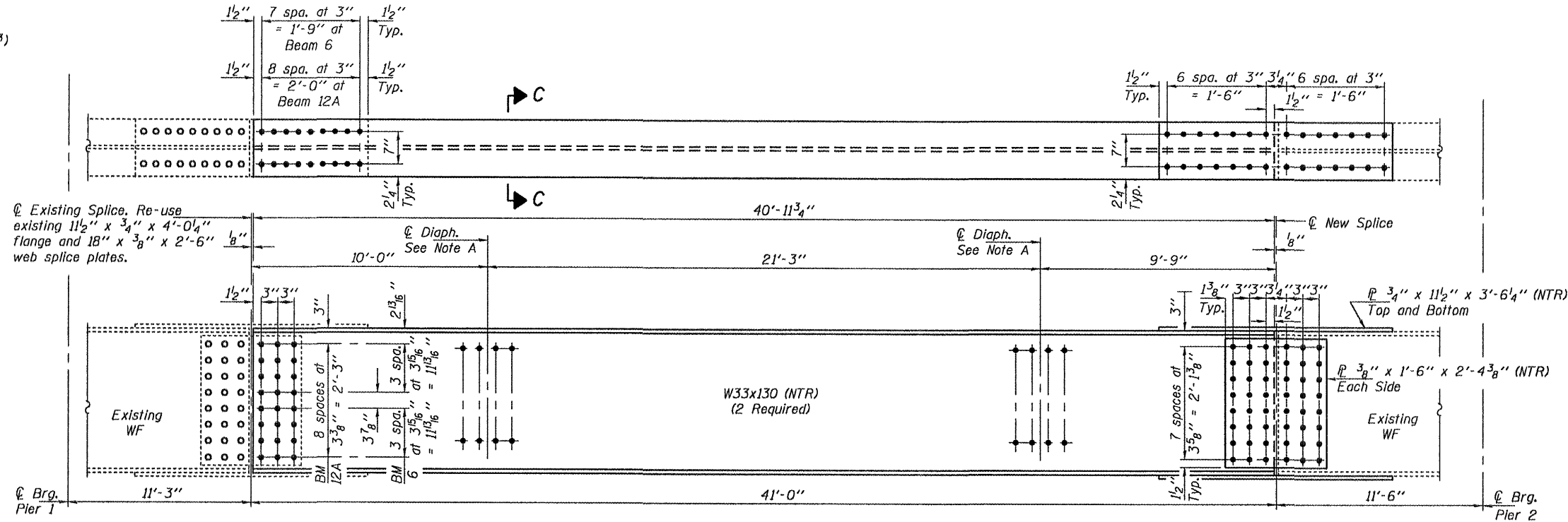


STATE OF ILLINOIS
DEPARTMENT OF TRANSPORTATION

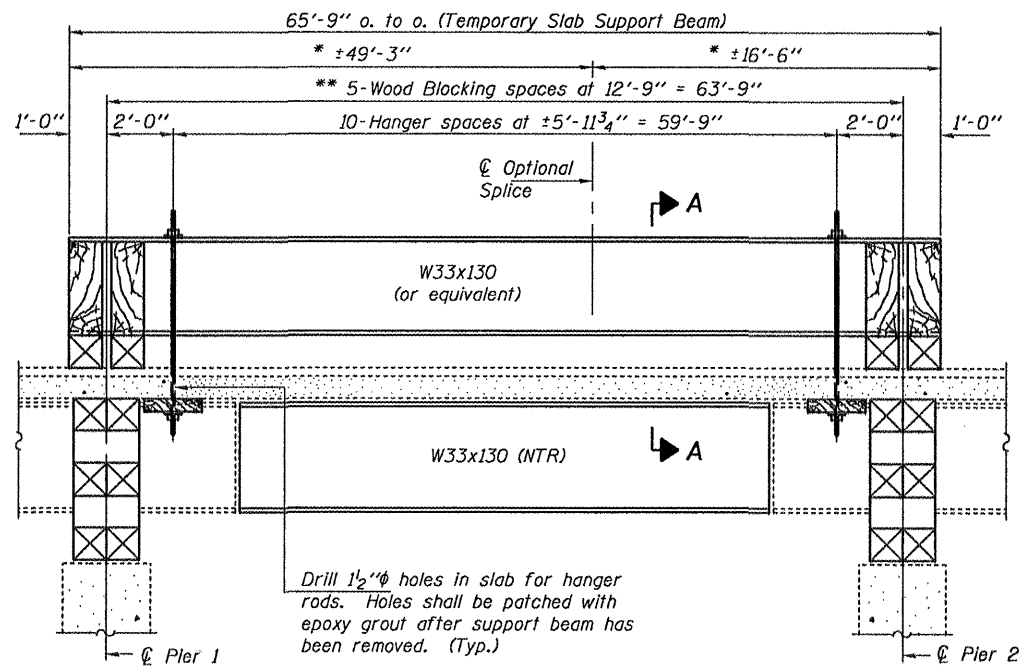


SECTION A-A

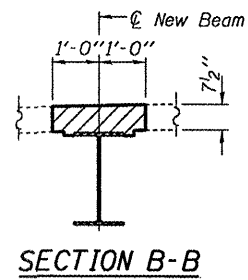


ELEVATION BEAMS 6 & 12A

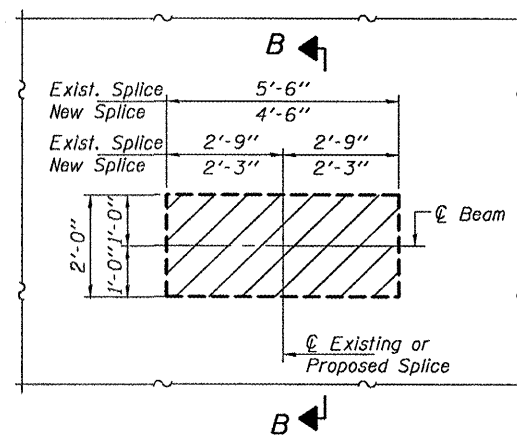
* These dimensions may vary for available beams in stock.
** Wood Blocking to be placed after support beam is allowed to deflect under its own weight.



LONGITUDINAL SECTION
SUGGESTED TEMPORARY SLAB SUPPORT SYSTEM



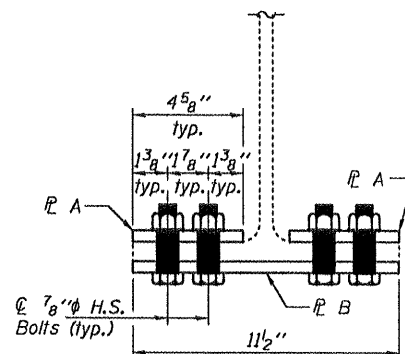
SECTION B-B



TYPICAL CONCRETE
REMOVAL AND REPLACEMENT

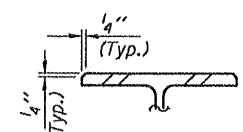
Hatched areas indicate concrete sections to be removed and replaced. Perimeters of concrete removal areas shall be saw cut 3/4 inch prior to the removal of concrete. Reinforcement shall be cut only if required for fitting bolts. Cut reinforcement shall be spliced as directed by the Engineer. Cast shall be included with Concrete Removal.

Note A:
Use holes in existing diaphragm connection angles as template for field drilling holes in new beam.



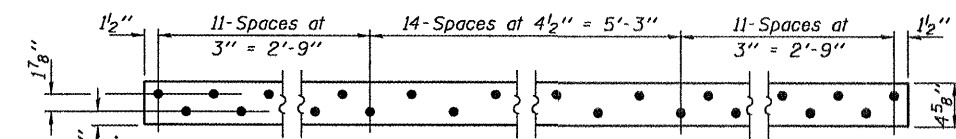
STRENGTHENING DETAIL
BEAMS 10, 12, & 12B

Note:
Field drill holes in existing flange using holes in P's as template.

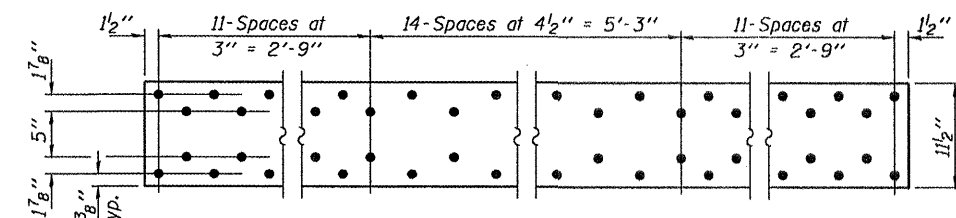


SECTION C-C

Note:
Natural camber of new beam shall be placed upward for fabrication.



STRENGTHENING P A
P 1/2" x 4 5/8" x 11'-0"
(6 Required)



STRENGTHENING P B
P 1/2" x 11 1/2" x 11'-0"
(3 Required)

REPAIR DETAILS
WASHINGTON STREET OVER US 41
SN 049-0016

DESIGNED	VHV
CHECKED	AJB
DRAWN	Kyle M. Steffen
CHECKED	VHV

MAY 1, 2009
EXAMINED *Carl P. Steffen*
ENGINEER OF STRUCTURAL SERVICES
PASSED *Ralph E. Anderson*
ENGINEER OF BRIDGES AND STRUCTURES

SHEET NO. 3 3 SHEETS	F.A.U. RTE.	SECTION	COUNTY	TOTAL SHEETS	SHEET NO.
	1223	-	LAKE	10	7
FED. ROAD DIST. NO.		ILLINOIS	FED. AID PROJECT	CONTRACT NO. 60G34	