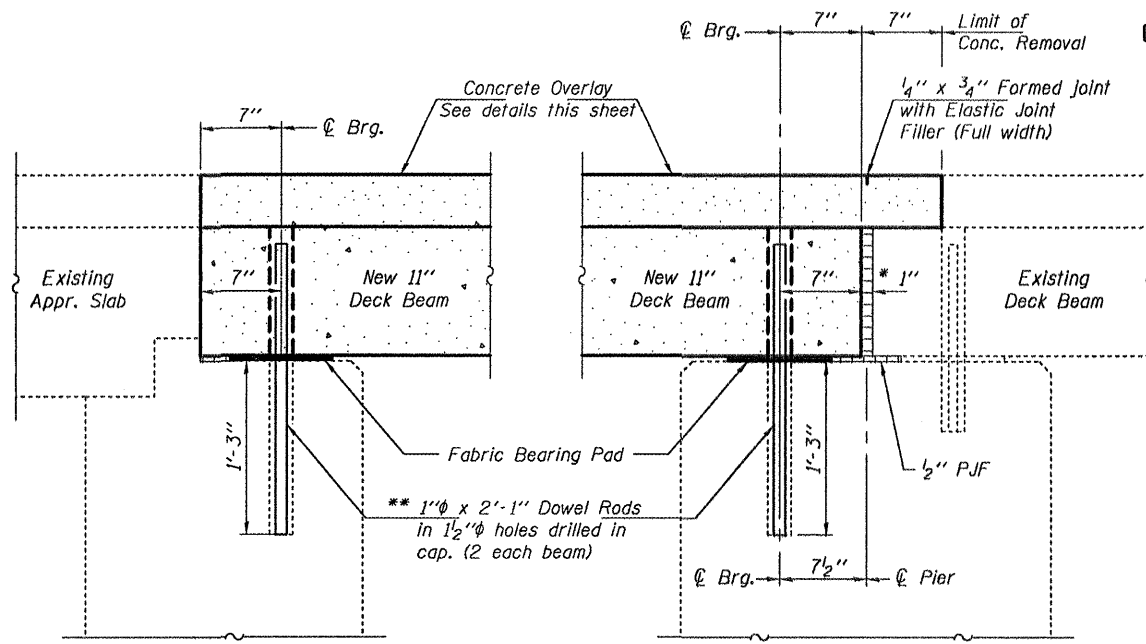


STATE OF ILLINOIS
DEPARTMENT OF TRANSPORTATION



SECTION THRU ABUTMENT

SECTION THRU PIER

* 1" Joint shall be filled with non-shrink grout. Dimension may vary to accommodate tolerance in beam lengths.

** Existing dowel rods are to be burned off, ground flush, and sealed with epoxy prior to placement of new beams. Cost included in Removal of Existing PPC Deck Beams. After beams have been erected holes shall be drilled into cap and dowel rods placed. Dowel holes shall be filled with non-shrink grout to top of beam and allowed to cure a minimum of 24 hours prior to grouting the shear keys.

*** Attach existing reinforcement with mechanical splicers. Existing reinforcement to extend 6" (min.) into the removal area to allow attachment of the mechanical splicers.

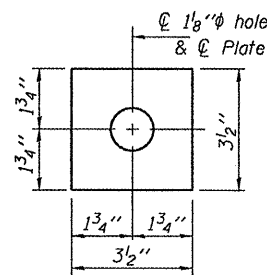
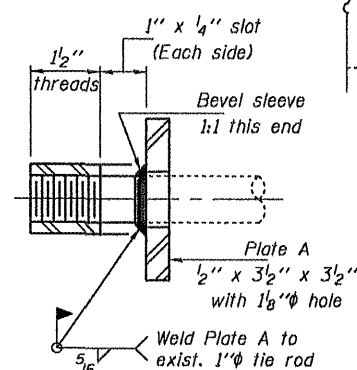
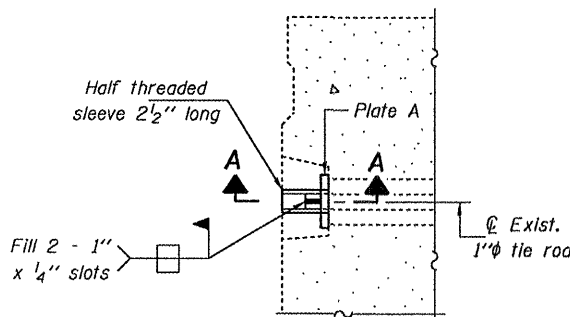


PLATE A
(1 Required)

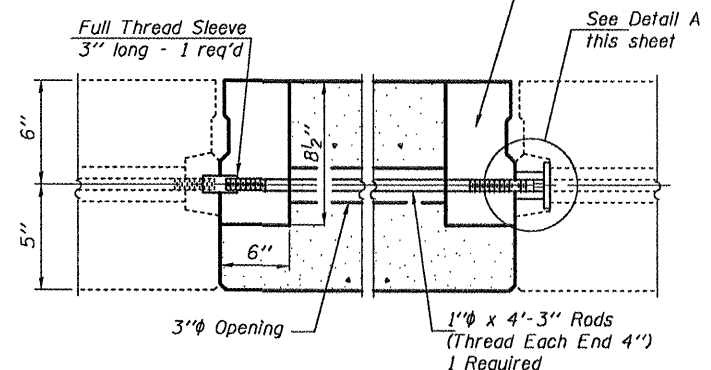


SECTION A-A
(1 Required)



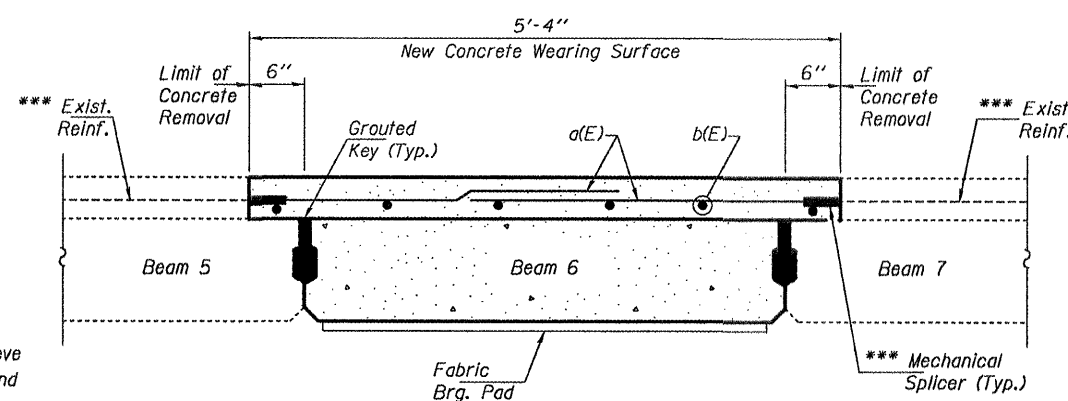
DETAIL A

6" x 6" x 8 1/2" Blockout to be filled with non-shrink grout as specified in the special provision Concrete Deck Beams (Min. compressive strength at 7 days = 6,000 psi) after beams have been installed. Cost shall be included in the cost of PPC Deck Beams (11" Depth). (Typ.)

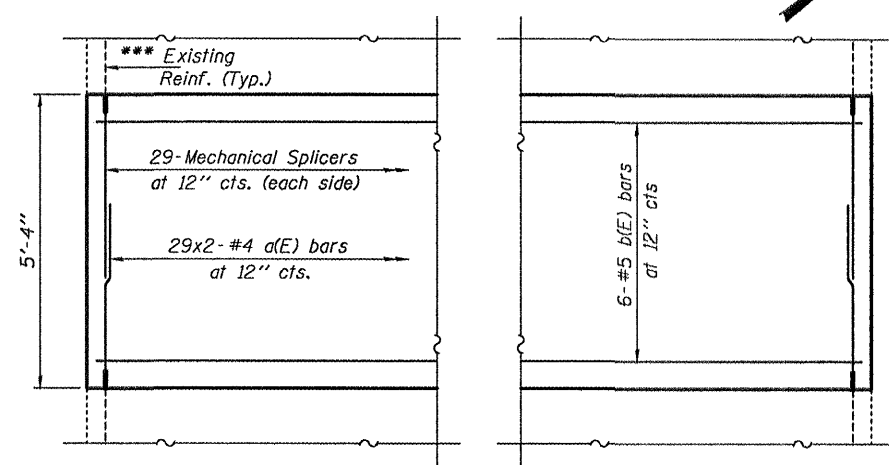


TYPICAL TRANSVERSE TIE ASSEMBLY

The 1" rods in the transverse tie assembly shall be tightened to a snug fit and the threads set.



PARTIAL CROSS SECTION
(Looking North)
Showing Reinforcement



PARTIAL CONCRETE WEARING SURFACE PLAN

BILL OF MATERIAL

Bar	No.	Size	Length	Shape
a(E)	58	#4	3'-5"	
b(E)	6	#5	28'-3"	
Concrete Removal			Cu. Yd.	0.4
Concrete Wearing Surface			Sq. Yd.	17.0
Reinforcement Bars, Epoxy Coated			Pound	310

Bars indicated thus 29 x 2-#4 etc. indicates 29 lines of bars with 2 lengths per line.

MIN. LAP
#4 bars = 1'-8"

REPAIR DETAILS
IL ROUTE 171 OVER
LONG RUN CREEK
SN 099-0080

SHEET NO. 3 3 SHEETS	F.A.P. RTE.	SECTION	COUNTY	TOTAL SHEETS	SHEET NO.
	577	-	WILL	13	7
FED. ROAD DIST. NO.			ILLINOIS	FED. AID PROJECT	
CONTRACT NO. 60G38					

DESIGNED	AJB
CHECKED	VHV
DRAWN	Kyle M. Steffen
CHECKED	AJB VHV

MAY 1, 2009
EXAMINED *Carl Perry*
ENGINEER OF STRUCTURAL SERVICES
PASSED *Ralph E. Anderson*
ENGINEER OF BRIDGES AND STRUCTURES