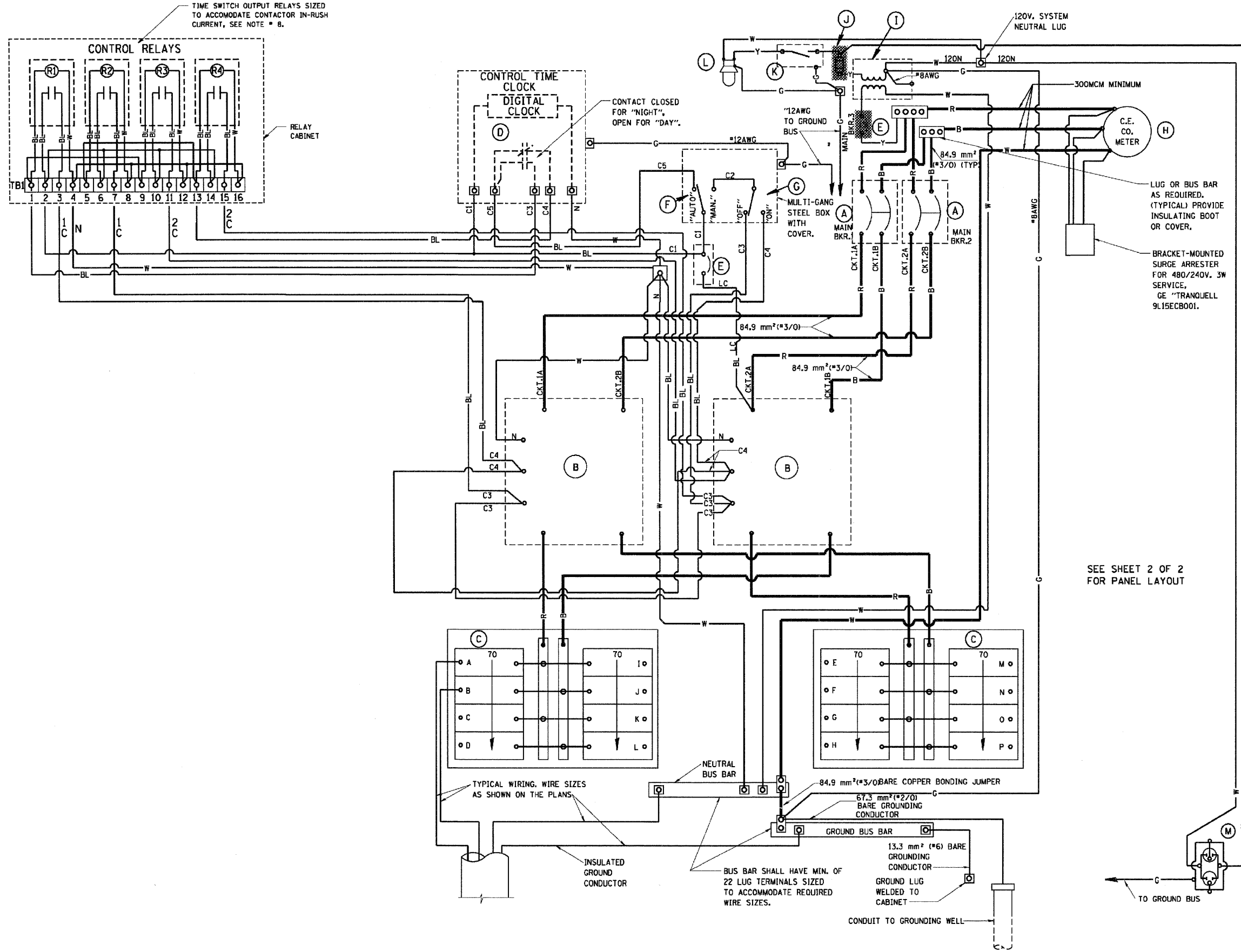


DATE BY DATE BY DATE BY  
 CHRISTOPHER B. BURKE ENGINEERING LTD.  
 8575 West Higgins Road, Suite 600  
 Rosemont, Illinois 60018  
 (617) 823-0500



| DEVICE SCHEDULE |        |   |
|-----------------|--------|---|
| ITEM            | QUANT. | DESCRIPTION   |
| A               | 2      | CIRCUIT BREAKER, MOLDED CASE, THERMAL MAGNETIC, 2-POLE, 600V, A.C., 225A FRAME, 175A, NON-INTERCHANGABLE TRIP, BOLT-ON TYPE; INTERRUPTING CAPACITY OF NOT LESS THAN 22,000 RMS SYMMETRICAL AMPERES AT 480V.             |
| B               | 2      | LIGHTING CONTACTOR SWITCH MECHANICALLY HELD, ASCO 920, MOUNTED ON SUB PANEL 200A, 2P, 600V, WITH 240V. COIL.  |
| C               | 2      | PANEL BOARD (INTERIOR ONLY) 480/240V, SINGLE PHASE WITH 200A COPPER MAINS AND EIGHT 1P-70A BOLT-ON BRANCH BREAKERS EACH RATED 27TV. WITH INTERRUPTING CAPACITY OF NOT LESS THAN 14,000 RMS SYMMETRICAL AMPERES AT 27TV. |
| D               | 1      | TIME CLOCK; 240V, 60 HZ, MICROPROCESSOR BASED 2-CHANNEL CONTROLLER WITH ASTRONOMIC FUNCTIONS. RATED FOR -30 DEGREES C. TO +70 DEGREES C.  |
| E               | 2      | CIRCUIT BREAKER, MOLDED CASE, THERMAL MAGNETIC, 1-POLE, 277V, BOLT-ON TYPE, 15A WITH AN INTERRUPTING RATING OF NOT LESS THAN 14,000 RMS SYMMETRICAL AMPERES AT 27TV.  |
| F               | 1      | CONTROL SWITCH, MOMENTARY CONTACT, SPDT, 20A., 240V.  |
| G               | 1      | CONTROL SWITCH, TOGGLE TYPE, SPDT, 20A., 240V. PREMIUM SPEC. GRADE  |
| H               | 1      | SOCKET FOR ELECTRIC UTILITY COMPANY METER.  |
| I               | 1      | STEP DOWN TRANSFORMER 240V.-120V., 1KVA.  |
| J               | 2      | FUSE HOLDER 15A., 250V., 5A. FUSE   |
| K               | 1      | 20A. SPST MICRO SWITCH (MOUNT WITH ACTUATOR TO SWITCH WHEN DOOR OPENED)   |
| L               | 1      | 60 WATT LIGHT FIXTURE, VAPOR TIGHT, WITH GLOBE AND GUARD AND MOUNTING BOX.  |
| M               | 1      | GFI RECEPTACLE, 120V., 20A., PREMIUM SPEC. GRADE. NEMA REFERENCE 5-15R IN WEATHER-PROOF BOX WITH FLAP-TYPE COVER.   |

- NOTES:**
- ALL CONTROL CABINET ITEMS SHALL HAVE SUITABLE IDENTIFICATION. OPEN CIRCUIT BREAKERS, CONTACTORS AND OTHER OPEN DEVICES SHALL HAVE PERMANENT SELF-STICKING TAGS. DEVICES IN ENCLOSURES SHALL HAVE ENGRAVED 2-COLOR LAMINATED PLASTIC NAMEPLATES ATTACHED TO ENCLOSURES WITH SCREWS. NAMEPLATES SHALL BE ENGRAVED TO CORRESPOND TO DESIGNATIONS ON THE DRAWINGS. INTERNAL CABINET WIRING SHALL BE IDENTIFIED AS INDICATED OR AS DIRECTED BY THE ENGINEER BY MEANS OF SELF-STICKING TAGS APPLIED AT EACH CONNECTED END. IDENTIFICATION SHALL BE MADE BY THE CABINET MANUFACTURER.
  - ALL WIRING WITHIN THE CABINET SHALL BE COLOR CODED AS INDICATED.  
 R = RED BL = BLUE W = WHITE  
 B = BLACK Y = YELLOW G = GREEN
  - PROVIDE SEALING GROMMETS FOR ALL OPEN WIRING EXTENDED FROM DEVICES IN BOXES OR CABINETS WITHIN THE CONTROL CABINET.
  - ALL 120 VOLT SYSTEM AND ALL CONTROL WIRING SHALL BE #12AWG STRANDED UNLESS OTHERWISE INDICATED.
  - ALL WIRING SHALL BE NEATLY DRESSED AND SUPPORTED.
  - THE CONTROLLER SHALL BE CONSTRUCTED TO U.L. STD. 508 AND BEAR THE U.L. LABEL "ENCLOSED INDUSTRIAL CONTROL PANEL"
  - SEE CABINET AND FOUNDATION DETAIL SHEET FOR SCHEMATIC DIAGRAM AND DEVICE LAYOUT.
  - CONTROL RELAYS CAN BE ELIMINATED IF THE CONTROL TIME CLOCK OUTPUT CONTACTS ARE RATED FOR CONTACTOR INRUSH CURRENT.

|                                   |                      |                   |           |
|-----------------------------------|----------------------|-------------------|-----------|
| FILE NAME =                       | USER NAME = FPACIONE | DESIGNED - ABR    | REVISED - |
| ...\\Treff\pc\ILT_de02-be200b.dgn |                      | DRAWN - FPB / FCP | REVISED - |
|                                   |                      | CHECKED - MUT     | REVISED - |
|                                   |                      | DATE -            | REVISED - |

**STATE OF ILLINOIS  
 DEPARTMENT OF TRANSPORTATION**

**CONTROL CABINET, DUPLEX TYPE WIRING DETAIL**

SCALE: N.T.S. SHEET NO. OF SHEETS STA. TO STA.

| F.A.U. RTE.                                   | SECTION     | COUNTY | TOTAL SHEET NO. | SHEET NO. |
|---|-------------|--------|-----------------|-----------|
| 1321  | 2009-034 TS | COOK   | 45              | 37        |
| CONTRACT NO. 60G39                            |             |        |                 |           |
| FED. ROAD DIST. NO. ILLINOIS FED. AID PROJECT |             |        |                 |           |