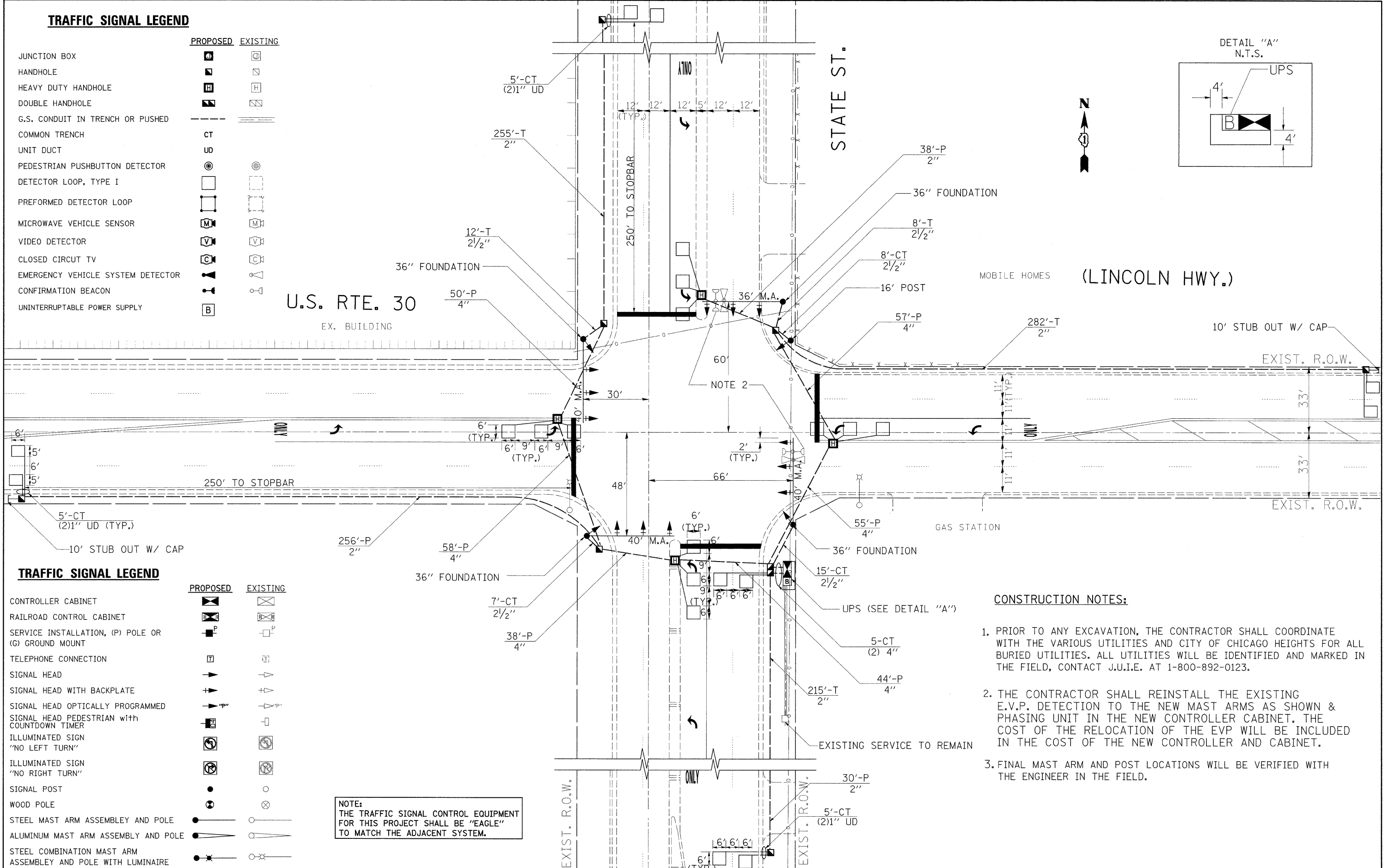
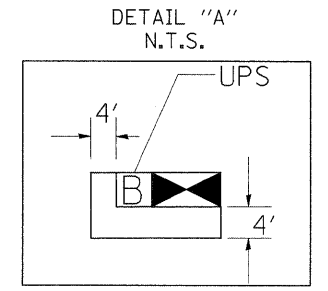


TRAFFIC SIGNAL LEGEND

	PROPOSED	EXISTING
JUNCTION BOX		
HANDHOLE		
HEAVY DUTY HANDHOLE		
DOUBLE HANDHOLE		
G.S. CONDUIT IN TRENCH OR PUSHED		
COMMON TRENCH	CT	
UNIT DUCT	UD	
PEDESTRIAN PUSHBUTTON DETECTOR		
DETECTOR LOOP, TYPE I		
PREFORMED DETECTOR LOOP		
MICROWAVE VEHICLE SENSOR		
VIDEO DETECTOR		
CLOSED CIRCUIT TV		
EMERGENCY VEHICLE SYSTEM DETECTOR		
CONFIRMATION BEACON		
UNINTERRUPTIBLE POWER SUPPLY	B	



TRAFFIC SIGNAL LEGEND

	PROPOSED	EXISTING
CONTROLLER CABINET		
RAILROAD CONTROL CABINET		
SERVICE INSTALLATION, (P) POLE OR (G) GROUND MOUNT		
TELEPHONE CONNECTION		
SIGNAL HEAD		
SIGNAL HEAD WITH BACKPLATE		
SIGNAL HEAD OPTICALLY PROGRAMMED		
SIGNAL HEAD PEDESTRIAN with COUNTDOWN TIMER		
ILLUMINATED SIGN "NO LEFT TURN"		
ILLUMINATED SIGN "NO RIGHT TURN"		
SIGNAL POST		
WOOD POLE		
STEEL MAST ARM ASSEMBLY AND POLE		
ALUMINUM MAST ARM ASSEMBLY AND POLE		
STEEL COMBINATION MAST ARM ASSEMBLY AND POLE WITH LUMINAIRE		

NOTE:
THE TRAFFIC SIGNAL CONTROL EQUIPMENT FOR THIS PROJECT SHALL BE "EAGLE" TO MATCH THE ADJACENT SYSTEM.

CONSTRUCTION NOTES:

- PRIOR TO ANY EXCAVATION, THE CONTRACTOR SHALL COORDINATE WITH THE VARIOUS UTILITIES AND CITY OF CHICAGO HEIGHTS FOR ALL BURIED UTILITIES. ALL UTILITIES WILL BE IDENTIFIED AND MARKED IN THE FIELD, CONTACT J.U.I.E. AT 1-800-892-0123.
- THE CONTRACTOR SHALL REINSTALL THE EXISTING E.V.P. DETECTION TO THE NEW MAST ARMS AS SHOWN & PHASING UNIT IN THE NEW CONTROLLER CABINET. THE COST OF THE RELOCATION OF THE EVP WILL BE INCLUDED IN THE COST OF THE NEW CONTROLLER AND CABINET.
- FINAL MAST ARM AND POST LOCATIONS WILL BE VERIFIED WITH THE ENGINEER IN THE FIELD.