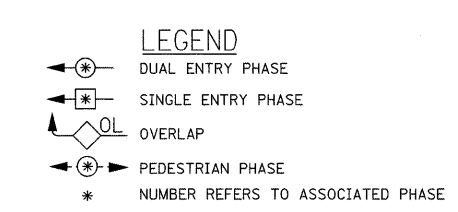


PHASE DESIGNATION DIAGRAM



ITEM	UNIT	QUANTITY
COMBINATION CURB AND GUTTER REMOVAL	FOOT	39
PORTLAND CEMENT CONCRETE SIDEWALK 5 INCH	SQ FT	210
SIDEWALK REMOVAL	SQ FT	210
DETECTABLE WARNINGS	SQ FT	172
SIGN PANEL-TYPE I	SQ FT	18
THERMOPLASTIC PAVEMENT MARKING LINE 6"	FOOT	381
THERMOPLASTIC PAVEMENT MARKING LINE 24"	FOOT	80
THERMOPLASTIC PAVEMENT MARKING-LETTERS AND SYMBOLS	SQ FT	80
THERMOPLASTIC PAVEMENT MARKING REMOVAL	FOOT	104
CONDUIT IN PUSH, 2 1/2" DIA., GALVANIZED STEEL	FOOT	145
CONDUIT IN TRENCH, 4" DIA., GALVANIZED STEEL	FOOT	8
CONDUIT IN PUSH, 2" DIA., GALVANIZED STEEL	FOOT	618
CONDUIT IN PUSH, 4" DIA., GALVANIZED STEEL	FOOT	134
HANDHOLE	EACH	4
HEAVY-DUTY HANDHOLE	EACH	1
DOUBLE HANDHOLE	EACH	1
FULL-ACTUATED CONTROLLER AND TYPE IV CABINET(SPECIAL)	EACH	1
ELECTRIC CABLE IN CONDUIT, SIGNAL NO. 14 2C	FOOT	469
ELECTRIC CABLE IN CONDUIT, SIGNAL NO. 14 3C	FOOT	639
ELECTRIC CABLE IN CONDUIT, SIGNAL NO. 14 5C	FOOT	1852
ELECTRIC CABLE IN CONDUIT, SIGNAL NO. 14 7C	FOOT	237
ELECTRIC CABLE IN CONDUIT, LEAD-IN, NO. 14 1 PAIR	FOOT	986
ELECTRIC CABLE IN CONDUIT, SERVICE, NO. 6 2C	FOOT	48
ELECTRIC CABLE IN CONDUIT, GROUNDING, NO. 6 1C	FOOT	410
STEEL MAST ARM ASSEMBLY AND POLE, 30 FT.	EACH	1
STEEL MAST ARM ASSEMBLY AND POLE, 34 FT.	EACH	1
CONCRETE FOUNDATION, TYPE A	FOOT	12
CONCRETE FOUNDATION, TYPE C	FOOT	4
CONCRETE FOUNDATION, TYPE E 30-INCH DIA.	FOOT	30
SIGNAL HEAD, L.E.D. 1-FACE, 3 SECTION, MAST ARM MNTD.	EACH	5
SIGNAL HEAD, L.E.D. 2-FACE, 3 SECTION, BRKT. MNTD.	EACH	2
SIGNAL HEAD, L.E.D. 3-FACE, 2-3 SECT., 1-5 SECT., BRKT MNTD.	EACH	1
SIGNAL HEAD, L.E.D. 3-FACE, 3-SECTION BRKT MNTD.	EACH	1
PEDESTRIAN SIGNAL HEAD, L.E.D., 1-FACE, BRKT. MNTD. with COUNTDOWN TIMER	EACH	2
PEDESTRIAN SIGNAL HEAD, L.E.D., 2-FACE, BRKT. MNTD. with COUNTDOWN TIMER	EACH	2
TRAFFIC SIGNAL POST, GALVANIZED STEEL 14 FT.	EACH	3
TRAFFIC SIGNAL BACKPLATE, LOUVERED, ALUMINUM	EACH	6
TRENCH AND BACKFILL FOR ELECTRICAL WORK	FOOT	14
INDUCTIVE LOOP DETECTOR	EACH	5
DETECTOR LOOP TYPE I	FOOT	382
PEDESTRIAN PUSH-BUTTON	EACH	1
TEMPORARY TRAFFIC SIGNAL INSTALLATION	EACH	1
REMOVE EXISTING TRAFFIC SIGNAL EQUIPMENT	EACH	1
REMOVE EXISTING CONCRETE FOUNDATION	EACH	7
REMOVE EXISTING HANDHOLE	EACH	4
TEMPORARY TRAFFIC SIGNAL TIMINGS	EACH	1
UNINTERRUPTIBLE POWER SUPPLY	EACH	1
SERVICE INSTALLATION, POLE MOUNT	EACH	1

NOTE:
 PUSHBUTTON "A" SHALL PLACE A CALL IN PHASES 2 AND 4.
 PUSHBUTTON "D" SHALL PLACE A CALL IN PHASES 2 AND 8.

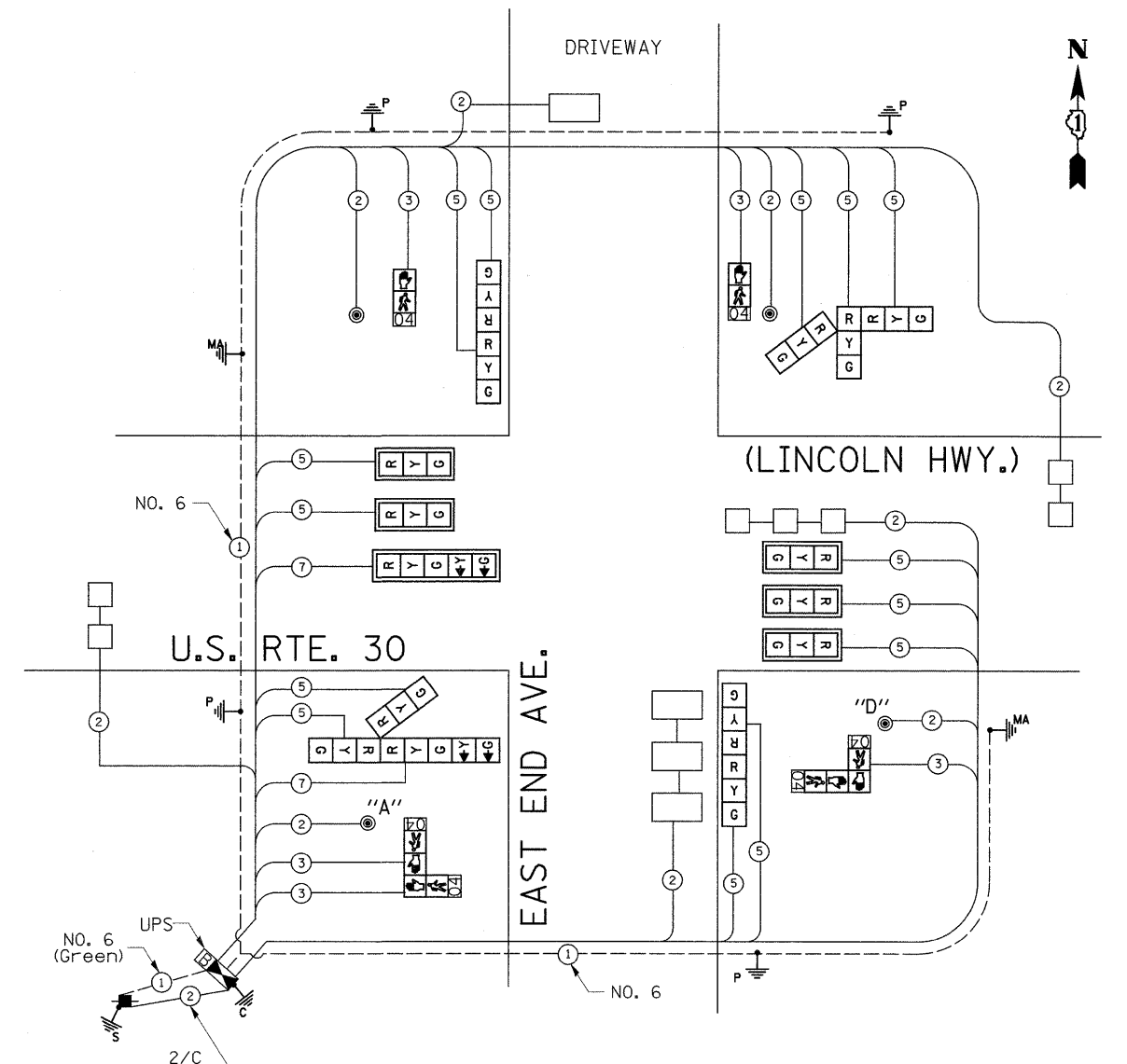
FOUNDATION (DEPTH)	FT. (m)	CABLE SLACK	FT. (m)	VERTICAL	FT. (m)
TYPE A - POST	4 (1.2)	HANDHOLE	6.5 (2.0)	ALL FOUNDATIONS	3.5 (1.0)
D - CONTROLLER	4 (1.2)	DOUBLE HANDHOLE	13 (4.0)	MAST ARM (L) POLE	20'-H-2"= (6m-H-0.6m)=
E - M. ARM POLE		SIGNAL POST	2 (1.0)		
24" (600mm)	10 (3.0)	CONTROLLER CAB.	1 (0.5)	BRACKET MOUNTED	13 (4.0)
30" (750mm)	15 (4.6)	FIBER OPTIC	13 (4.0)	PED. PUSHBUTTON	4 (1.2)
36" (900mm)	15 (4.6)	ELECTRIC SERVICE	1 (0.5)	ELECTRIC SERVICE	13.5 (4.1)
		GROUND CABLE	1 (0.5)	SERVICE TO GROUND	13.5 (4.1)
				POST MOUNTED	6 (1.8)

I.D.O.T. TRAFFIC SIGNAL INSTALLATION ELECTRICAL SERVICE REQUIREMENTS					TOTAL WATTAGE
TYPE	NO. LAMPS	WATTAGE INCAND.	WATTAGE LED	%OPERATION	
SIGNAL (RED)	16	135	17	0.50	136.00
(YELLOW)	16	135	25	0.25	100.00
(GREEN)	16	135	15	0.25	60.00
ARROW	4	135	12	0.10	4.80
PED. SIGNAL	6	90	25	1.00	150.00
CONTROLLER	1	100	100	1.00	100.00
ILLUM. SIGN		84		0.05	
FLASHER				0.50	
ENERGY COSTS TO:				TOTAL =	550.80

ENERGY SUPPLY CONTACT: 708-410-5069
 PHONE: COM. EDISON
 COMPANY:

DESIGNED -
 DRAWN -
 CHECKED -
 DATE -

STATE OF ILLINOIS
 DEPARTMENT OF TRANSPORTATION



CABLE PLAN LEGEND

PROPOSED	EXISTING	DESCRIPTION	PROPOSED	EXISTING
[Symbol]	[Symbol]	CONTROLLER CABINET	[Symbol]	[Symbol]
[Symbol]	[Symbol]	RAILROAD CONTROL CABINET	[Symbol]	[Symbol]
[Symbol]	[Symbol]	SERVICE INSTALLATION, (P) POLE OR (G) GROUND MOUNT	[Symbol]	[Symbol]
[Symbol]	[Symbol]	TELEPHONE CONNECTION	[Symbol]	[Symbol]
[Symbol]	[Symbol]	GROUND ROD AT (C) CONTROLLER, (H)HANDHOLE, (P) POST, (M) MAST ARM, OR (S) SERVICE	[Symbol]	[Symbol]
[Symbol]	[Symbol]	FIBER OPTIC CABLE IN CONDUIT, NUMBER OF FIBERS AS NOTED	[Symbol]	[Symbol]
[Symbol]	[Symbol]	ELECTRIC CABLE IN CONDUIT, NO. 14, UNLESS OTHERWISE NOTED. NUMBER OF CONDUCTORS AS NOTED	[Symbol]	[Symbol]
[Symbol]	[Symbol]	GROUND CABLE IN CONDUIT NO. 6 COPPER (GREEN)	[Symbol]	[Symbol]
[Symbol]	[Symbol]	SIGNAL FACE WITH BACKPLATE. "P" INDICATES PROGRAMMED HEAD	[Symbol]	[Symbol]
[Symbol]	[Symbol]	12" (300mm) RED WITH 8" (200mm) YELLOW AND GREEN TRAFFIC SIGNAL FACE	[Symbol]	[Symbol]
[Symbol]	[Symbol]	12" (300mm) TRAFFIC SIGNAL SECTION	[Symbol]	[Symbol]
[Symbol]	[Symbol]	12" (300mm) PEDESTRIAN SIGNAL SECTION with COUNTDOWN TIMER	[Symbol]	[Symbol]
[Symbol]	[Symbol]	ILLUMINATED SIGN "NO LEFT TURN"	[Symbol]	[Symbol]
[Symbol]	[Symbol]	ILLUMINATED SIGN "NO RIGHT TURN"	[Symbol]	[Symbol]
[Symbol]	[Symbol]	PUSHBUTTON DETECTOR	[Symbol]	[Symbol]
[Symbol]	[Symbol]	DETECTOR LOOP	[Symbol]	[Symbol]
[Symbol]	[Symbol]	PREFORMED DETECTOR LOOP	[Symbol]	[Symbol]
[Symbol]	[Symbol]	MICROWAVE VEHICLE SENSOR	[Symbol]	[Symbol]
[Symbol]	[Symbol]	VIDEO DETECTOR	[Symbol]	[Symbol]
[Symbol]	[Symbol]	CLOSED CIRCUIT TV	[Symbol]	[Symbol]
[Symbol]	[Symbol]	EMERGENCY VEHICLE SYSTEM DETECTOR	[Symbol]	[Symbol]
[Symbol]	[Symbol]	CONFIRMATION BEACON	[Symbol]	[Symbol]
[Symbol]	[Symbol]	UNINTERRUPTIBLE POWER SUPPLY	[Symbol]	[Symbol]

FILE NAME =
 USER NAME = nguyenism
 DESIGNED -
 DRAWN -
 CHECKED -
 DATE -

REVISIONS
 REVISED -
 REVISED -
 REVISED -
 REVISED -

SCALE: 1" = 20'-0" (1:240)
 PLOT DATE = 3/19/2009

STATE OF ILLINOIS
 DEPARTMENT OF TRANSPORTATION

PROPOSED CABLE PLAN
 ILLINOIS RTE. 30 (ILLINOIS HWY.) @ EAST END AVE.
 SCALE: SHEET NO. OF SHEETS STA. TO STA.

F.A.P. RTE. 353 SECTION 2009-033 TS COUNTY COOK TOTAL SHEETS 49 SHEET NO. 26 CONTRACT NO. 60G40 ILLINOIS FED. AID PROJECT