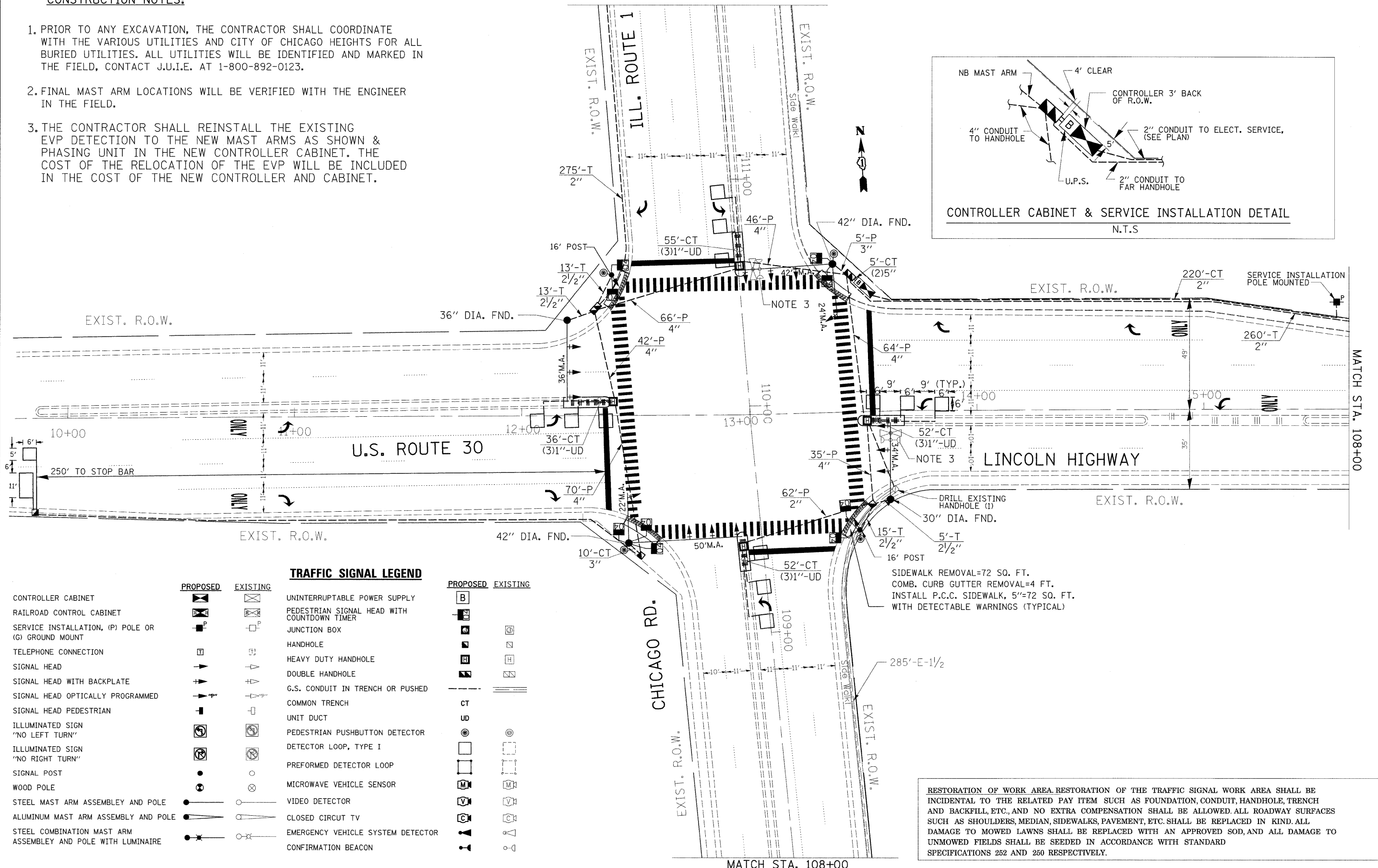
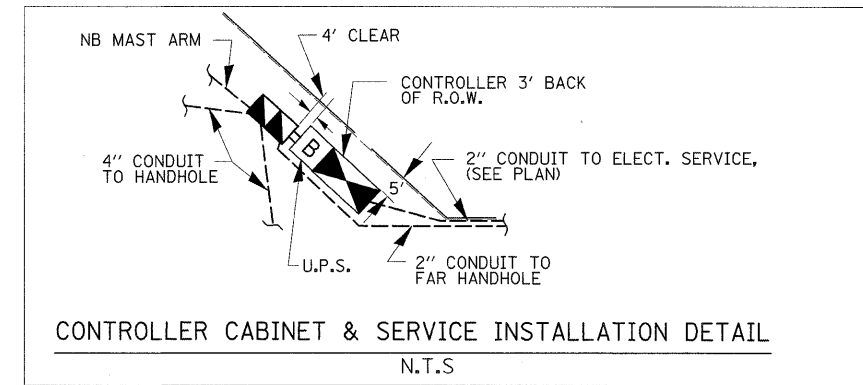


CONSTRUCTION NOTES:

1. PRIOR TO ANY EXCAVATION, THE CONTRACTOR SHALL COORDINATE WITH THE VARIOUS UTILITIES AND CITY OF CHICAGO HEIGHTS FOR ALL BURIED UTILITIES. ALL UTILITIES WILL BE IDENTIFIED AND MARKED IN THE FIELD, CONTACT J.U.I.E. AT 1-800-892-0123.
2. FINAL MAST ARM LOCATIONS WILL BE VERIFIED WITH THE ENGINEER IN THE FIELD.
3. THE CONTRACTOR SHALL REINSTALL THE EXISTING EVP DETECTION TO THE NEW MAST ARMS AS SHOWN & PHASING UNIT IN THE NEW CONTROLLER CABINET. THE COST OF THE RELOCATION OF THE EVP WILL BE INCLUDED IN THE COST OF THE NEW CONTROLLER AND CABINET.

MATCH STA. 111+77



TRAFFIC SIGNAL LEGEND

	PROPOSED	EXISTING		PROPOSED	EXISTING
CONTROLLER CABINET			UNINTERRUPTABLE POWER SUPPLY		
RAILROAD CONTROL CABINET			PEDESTRIAN SIGNAL HEAD WITH COUNTDOWN TIMER		
SERVICE INSTALLATION, (P) POLE OR (G) GROUND MOUNT			JUNCTION BOX		
TELEPHONE CONNECTION			HANDHOLE		
SIGNAL HEAD			HEAVY DUTY HANDHOLE		
SIGNAL HEAD WITH BACKPLATE			DOUBLE HANDHOLE		
SIGNAL HEAD OPTICALLY PROGRAMMED			G.S. CONDUIT IN TRENCH OR PUSHED		
SIGNAL HEAD PEDESTRIAN			COMMON TRENCH		
ILLUMINATED SIGN "NO LEFT TURN"			UNIT DUCT		
ILLUMINATED SIGN "NO RIGHT TURN"			PEDESTRIAN PUSHBUTTON DETECTOR		
SIGNAL POST			DETECTOR LOOP, TYPE I		
WOOD POLE			PREFORMED DETECTOR LOOP		
STEEL MAST ARM ASSEMBLY AND POLE			MICROWAVE VEHICLE SENSOR		
ALUMINUM MAST ARM ASSEMBLY AND POLE			VIDEO DETECTOR		
STEEL COMBINATION MAST ARM ASSEMBLY AND POLE WITH LUMINAIRE			CLOSED CIRCUIT TV		
			EMERGENCY VEHICLE SYSTEM DETECTOR		
			CONFIRMATION BEACON		

RESTORATION OF WORK AREA RESTORATION OF THE TRAFFIC SIGNAL WORK AREA SHALL BE INCIDENTAL TO THE RELATED PAY ITEM SUCH AS FOUNDATION, CONDUIT, HANDHOLE, TRENCH AND BACKFILL, ETC., AND NO EXTRA COMPENSATION SHALL BE ALLOWED. ALL ROADWAY SURFACES SUCH AS SHOULDERS, MEDIAN, SIDEWALKS, PAVEMENT, ETC. SHALL BE REPLACED IN KIND. ALL DAMAGE TO MOWED LAWNS SHALL BE REPLACED WITH AN APPROVED SOD, AND ALL DAMAGE TO UNMOWED FIELDS SHALL BE SEEDED IN ACCORDANCE WITH STANDARD SPECIFICATIONS 252 AND 250 RESPECTIVELY.

MATCH STA. 108+00

FILE NAME =	USER NAME = nguyensm	DESIGNED - STEVEN N./JOE E./BRENDA K.	REVISED -	STATE OF ILLINOIS DEPARTMENT OF TRANSPORTATION	TRAFFIC SIGNAL INSTALLATION PLAN			F.A.P. RTE.	SECTION	COUNTY	TOTAL SHEETS	SHEET NO.
TS.dgn		DRAWN - STEVEN N./BRENDA K.	REVISED -		ILLINOIS RTE. 30 (ILLINOIS HWY.) @ ILLINOIS RTE. 1 (CHICAGO RD.)			353/876	2009-033 TS	COOK	49	34
PLOT SCALE = 20.0000' / IN.		CHECKED - JOE E.	REVISED -		SCALE:	SHEET NO.	OF SHEETS	STA.	TO STA.	CONTRACT NO. 60640		
PLOT DATE = 3/19/2009		DATE - 3/15/09	REVISED -					FED. ROAD DIST. NO.	ILLINOIS/FED. AID PROJECT			