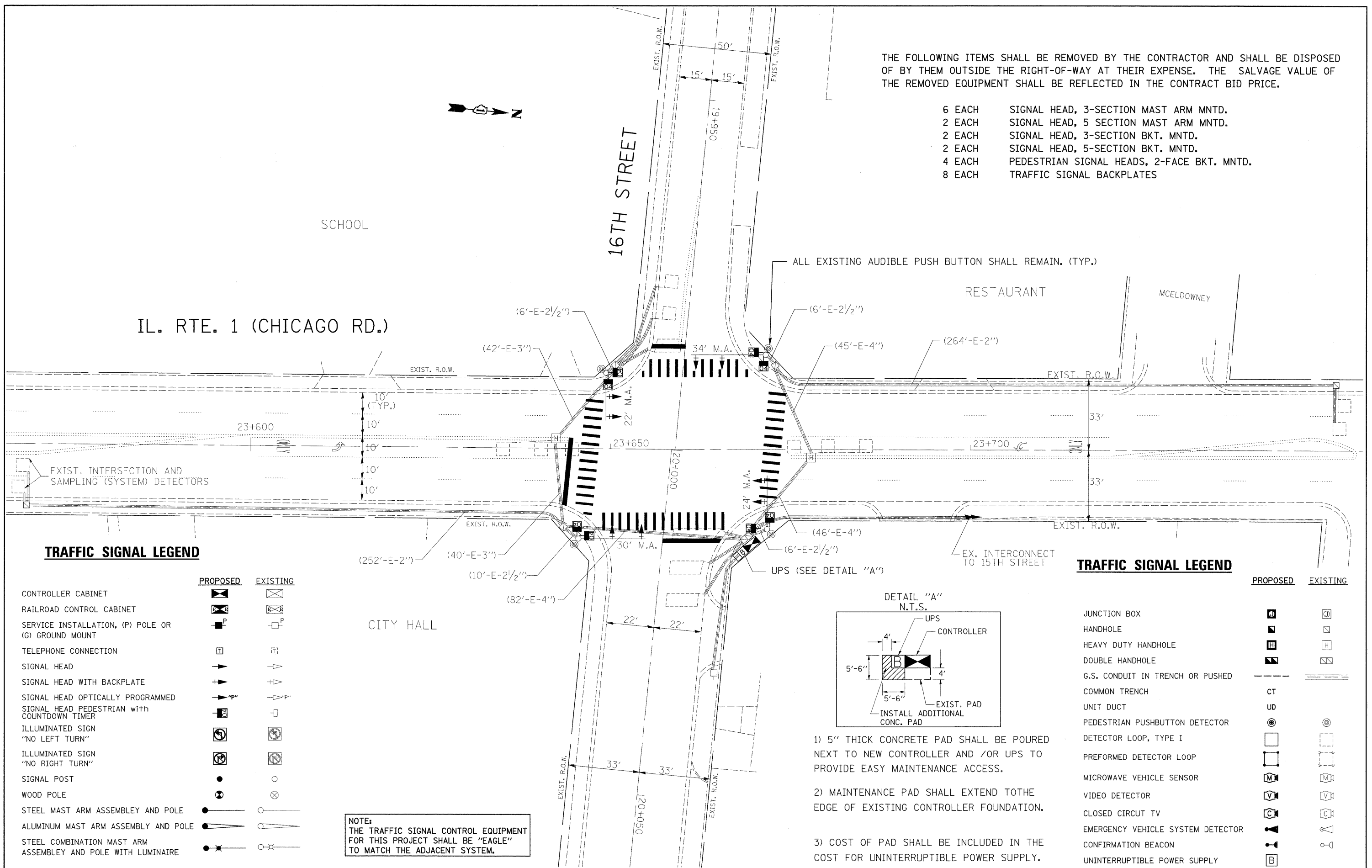


THE FOLLOWING ITEMS SHALL BE REMOVED BY THE CONTRACTOR AND SHALL BE DISPOSED OF BY THEM OUTSIDE THE RIGHT-OF-WAY AT THEIR EXPENSE. THE SALVAGE VALUE OF THE REMOVED EQUIPMENT SHALL BE REFLECTED IN THE CONTRACT BID PRICE.

- 6 EACH SIGNAL HEAD, 3-SECTION MAST ARM MNTD.
- 2 EACH SIGNAL HEAD, 5 SECTION MAST ARM MNTD.
- 2 EACH SIGNAL HEAD, 3-SECTION BKT. MNTD.
- 2 EACH SIGNAL HEAD, 5-SECTION BKT. MNTD.
- 4 EACH PEDESTRIAN SIGNAL HEADS, 2-FACE BKT. MNTD.
- 8 EACH TRAFFIC SIGNAL BACKPLATES



ALL EXISTING AUDIBLE PUSH BUTTON SHALL REMAIN. (TYP.)

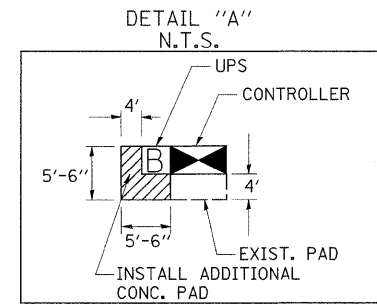
**TRAFFIC SIGNAL LEGEND**

	PROPOSED	EXISTING
CONTROLLER CABINET		
RAILROAD CONTROL CABINET		
SERVICE INSTALLATION, (P) POLE OR (G) GROUND MOUNT		
TELEPHONE CONNECTION		
SIGNAL HEAD		
SIGNAL HEAD WITH BACKPLATE		
SIGNAL HEAD OPTICALLY PROGRAMMED		
SIGNAL HEAD PEDESTRIAN with COUNTDOWN TIMER		
ILLUMINATED SIGN "NO LEFT TURN"		
ILLUMINATED SIGN "NO RIGHT TURN"		
SIGNAL POST		
WOOD POLE		
STEEL MAST ARM ASSEMBLY AND POLE		
ALUMINUM MAST ARM ASSEMBLY AND POLE		
STEEL COMBINATION MAST ARM ASSEMBLY AND POLE WITH LUMINAIRE		

NOTE:  
THE TRAFFIC SIGNAL CONTROL EQUIPMENT FOR THIS PROJECT SHALL BE "EAGLE" TO MATCH THE ADJACENT SYSTEM.

**TRAFFIC SIGNAL LEGEND**

	PROPOSED	EXISTING
JUNCTION BOX		
HANDHOLE		
HEAVY DUTY HANDHOLE		
DOUBLE HANDHOLE		
G.S. CONDUIT IN TRENCH OR PUSHED		
COMMON TRENCH	CT	
UNIT DUCT	UD	
PEDESTRIAN PUSHBUTTON DETECTOR		
DETECTOR LOOP, TYPE I		
PREFORMED DETECTOR LOOP		
MICROWAVE VEHICLE SENSOR		
VIDEO DETECTOR		
CLOSED CIRCUIT TV		
EMERGENCY VEHICLE SYSTEM DETECTOR		
CONFIRMATION BEACON		
UNINTERRUPTIBLE POWER SUPPLY		



- 5" THICK CONCRETE PAD SHALL BE POURED NEXT TO NEW CONTROLLER AND /OR UPS TO PROVIDE EASY MAINTENANCE ACCESS.
- MAINTENANCE PAD SHALL EXTEND TO THE EDGE OF EXISTING CONTROLLER FOUNDATION.
- COST OF PAD SHALL BE INCLUDED IN THE COST FOR UNINTERRUPTIBLE POWER SUPPLY.