

F.A.P. RTE.	SECTION	COUNTY	TOTAL SHEETS	SHEET NO.
	2009-038 TS	WILL	19	1
FED. ROAD DIST. NO.	ILLINOIS	CONTRACT NO. 60G43		

D-91-405-09

INDEX OF SHEETS

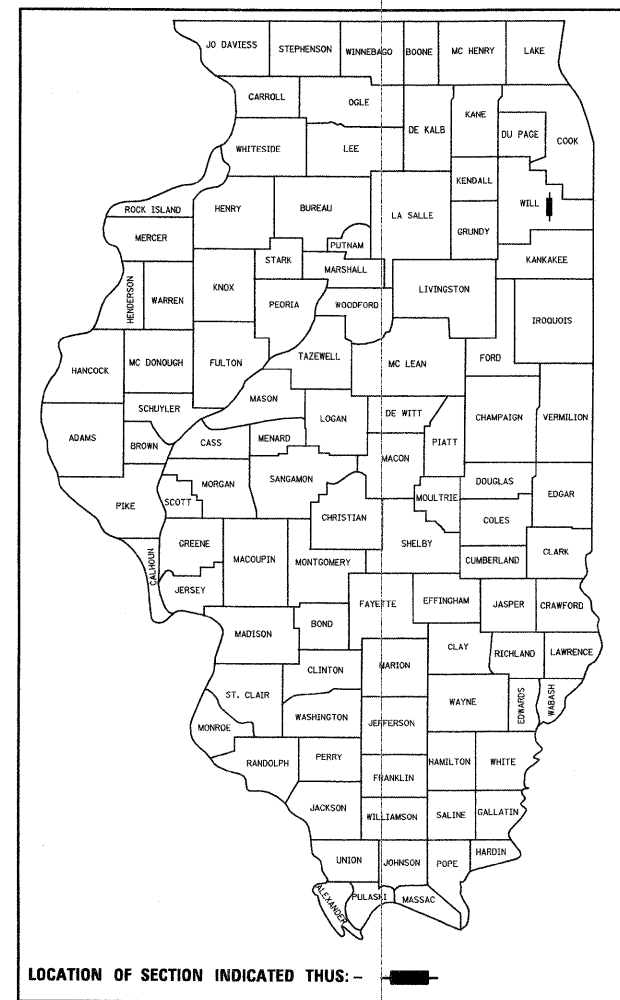
1. TITLE SHEET
2. GENERAL NOTES
3. SUMMARY OF QUANTITIES
- 4.-7. DISTRICT 1 STANDARD TRAFFIC SIGNAL DESIGN DETAILS
8. PLAN - LED TRAFFIC SIGNAL RETROFIT FLASHER LOCATIONS U.S. ROUTE 6 AT PARKER ROAD
9. TEMPORARY TRAFFIC SIGNAL INSTALLATION AND REMOVAL PLAN IL ROUTE 7 (159TH STREET) AT CEDAR ROAD
10. TEMPORARY CABLE PLAN AND PHASE DESIGNATION DIAGRAM IL ROUTE 7 (159TH STREET) AT CEDAR ROAD
11. TRAFFIC SIGNAL MODIFICATION PLAN IL ROUTE 7 (159TH STREET) AT CEDAR ROAD
12. SCHEDULE OF QUANTITIES, CABLE PLAN AND PHASE DESIGNATION DIAGRAM IL ROUTE 7 (159TH STREET) AT CEDAR ROAD
13. TRAFFIC SIGNAL MODIFICATION PLAN IL ROUTE 7 (159TH STREET) AT BELL ROAD (WEST JUNCTION)
14. TRAFFIC SIGNAL MODIFICATION PLAN IL ROUTE 7 (159TH STREET) AT BELL ROAD (WEST JUNCTION)
15. SCHEDULE OF QUANTITIES, CABLE PLAN AND PHASE DESIGNATION DIAGRAM IL ROUTE 7 (159TH STREET) AT BELL ROAD (WEST JUNCTION)
16. TRAFFIC SIGNAL MODIFICATION PLAN IL ROUTE 7 (159TH STREET) AT BELL ROAD (EAST JUNCTION)
17. SCHEDULE OF QUANTITIES, CABLE PLAN AND PHASE DESIGNATION DIAGRAM IL ROUTE 7 (159TH STREET) AT BELL ROAD (EAST JUNCTION)
18. TEMPORARY TRAFFIC SIGNAL MODIFICATION ILL. RTE. 7 AT PARKER ROAD
19. MAST ARM MOUNTED STREET NAME SIGN IL ROUTE 7 (159TH STREET) AT CEDAR ROAD

STATE OF ILLINOIS
DEPARTMENT OF TRANSPORTATION
DIVISION OF HIGHWAYS
**PLANS FOR PROPOSED
FEDERAL AID HIGHWAY**

**DISTRICT 1
HIGHWAY SAFETY IMPROVEMENT PROJECT**

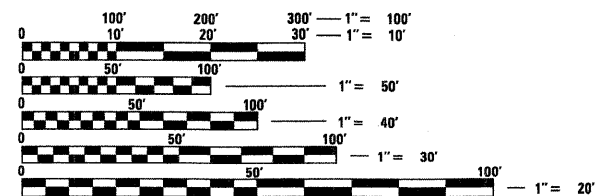
**FAU 297 (U.S. 6 @ Parker Road)
FAP351(IL 7 (159th Street) @ Cedar Road
IL 7 (159th Street) @ Bell Road West Junction
IL 7 (159th Street) @ Bell Road East Junction
IL 7 (159th Street) @ Parker Road)
PROJECT: HSIP-000S(673)
WILL COUNTY**

**SECTION 2009-038 TS
C-91-405-09**



IDOT STANDARDS:

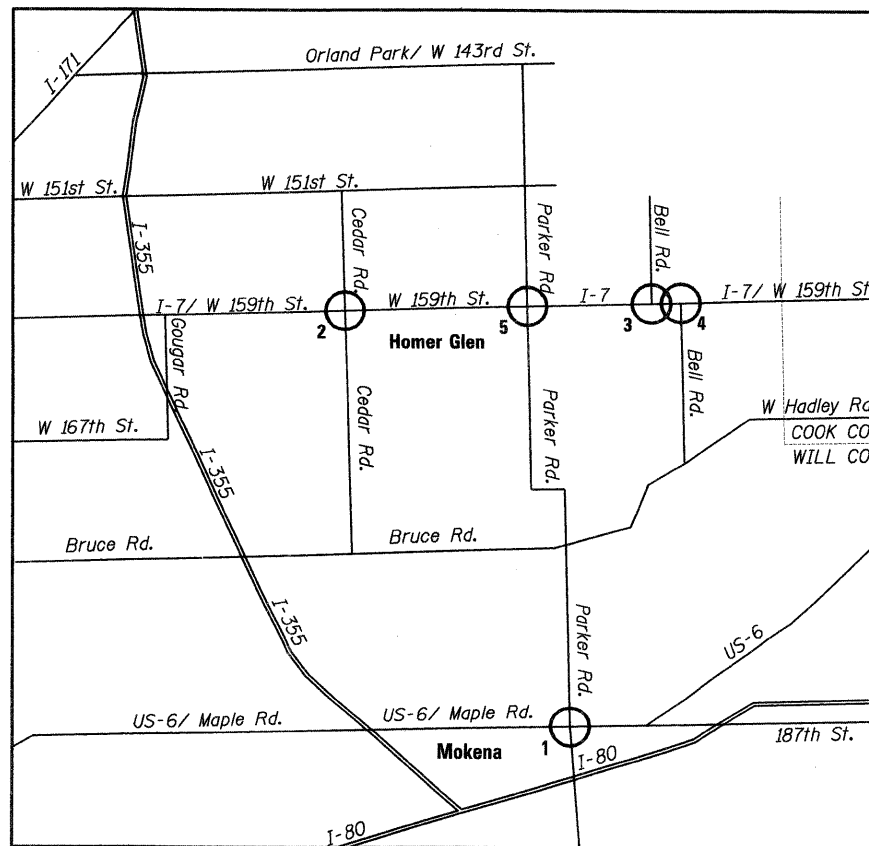
- 701001-02 OFF-RD OPERATIONS, 2L 2W MORE THAN 15' (4.5m) AWAY
- 701011-02 OFF-RD MOVING OPERATIONS, 2L 2W, DAY ONLY
- 701015-02 OFF-RD OPERATIONS, MULTILANE, 15' (4.5 m) TO 24' (600 mm) FROM PAVEMENT EDGE
- 70106-02 OFF-RD OPERATIONS, MULTILANE, MORE THAN 15' (4.5 m) AWAY
- 701301-03 LANE CLOSURE, 2L 2W, SHORT TIME OPERATIONS
- 701201-03 LANE CLOSURE, 2L 2W, DAY ONLY, FOR SPEEDS > 45 MPH
- 701421-02 LANE CLOSURE, MULTILANE, DAY OPERATIONS ONLY, FOR SPEEDS > 45 MPH TO 55 MPH
- 701501-05 URBAN LANE CLOSURE, 2L 2W, UNDIVIDED
- 701701-06 URBAN LANE CLOSURE, MULTILANE INTERSECTION
- 701901-01 TRAFFIC CONTROL DEVICES
- 720001-01 SIGN PANEL MOUNTING DETAILS
- 814001-02 HANDHOLES
- 814006-02 DOUBLE HANDHOLES
- 857001-01 STANDARD PHASE DESIGNATION DIAGRAMS AND PHASE SEQUENCES
- 886001-01 DETECTOR LOOP INSTALLATIONS
- 862001-01 UNINTERRUPTIBLE POWER SUPPLY (UPS)
- 877001-04 STEEL MAST ARM ASSEMBLY AND POLE 16" THROUGH 55"
- 878001-07 CONCRETE FOUNDATION DETAILS
- 888001-01 SPAN WIRE MOUNTED SIGNALS AND FLASHING BEACON INSTALLATION
- 888006-01 TRAFFIC SIGNAL MOUNTING DETAILS



FULL SIZE PLANS HAVE BEEN PREPARED USING STANDARD ENGINEERING SCALES. REDUCED SIZED PLANS WILL NOT CONFORM TO STANDARD SCALES. IN MAKING MEASUREMENTS ON REDUCED PLANS, THE ABOVE SCALES MAY BE USED.

J.U.L.I.E.
JOINT UTILITY LOCATING INFORMATION FOR EXCAVATORS
1-800-892-0123
OR 811

CONTRACT NO. 60G43

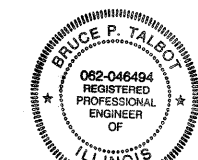


LOCATION MAP



LEGEND:

1. U.S. 6 @ Parker Road
2. IL 7 (159th Street) @ Cedar Road
3. IL 7 (159th Street) @ Bell Road West Junction
4. IL 7 (159th Street) @ Bell Road East Junction
5. IL 7 (159th Street) @ Parker Road



Bruce P. Talbot
03-18-2009
Expires: 11-30-2009

PREPARED BY:
CEMCON, Ltd.
Consulting Engineers, Land Surveyors & Planners
2290 White Oak Circle, Suite 100
Aurora, Illinois 60504-9675
Ph: 630.862.2100 Fax: 630.862.2199
E-Mail: cadd@cemcon.com Website: www.cemcon.com

STATE OF ILLINOIS
DEPARTMENT OF TRANSPORTATION
DIVISION OF HIGHWAYS

SUBMITTED March 20 20 09

Diane M. O'Keefe
DEPUTY DIRECTOR OF HIGHWAYS, REGION ENGINEER

May 8, 20 09
Charles G. Ingersoll
ENGINEER OF DESIGN AND ENVIRONMENT

May 8, 20 09
Christine M. Reed
DIRECTOR OF HIGHWAYS, CHIEF ENGINEER

**PRINTED BY THE AUTHORITY
OF THE STATE OF ILLINOIS**

BUREAU OF TRAFFIC, DISTRICT ONE: STEPHEN TRAVIA / DARYLE DREW (847) 705-4420