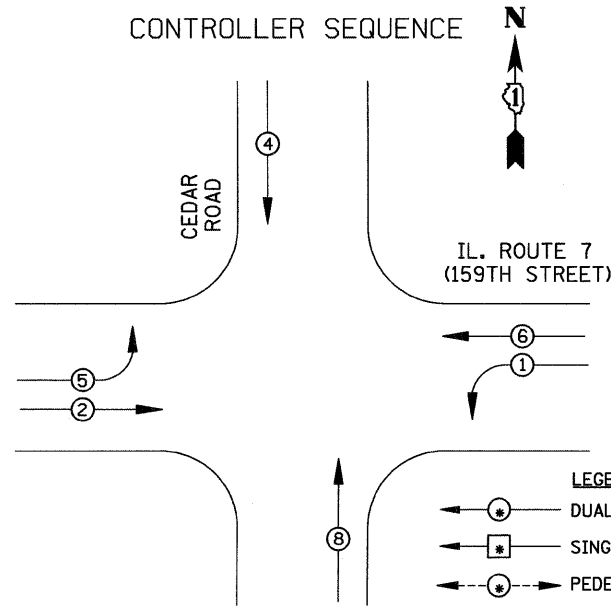
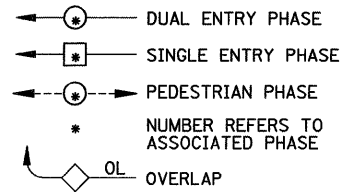


CONTROLLER SEQUENCE

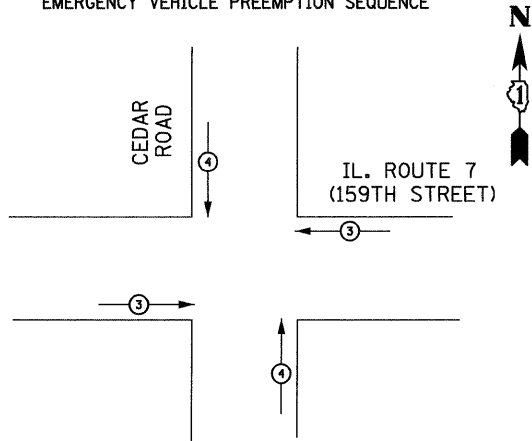


LEGEND



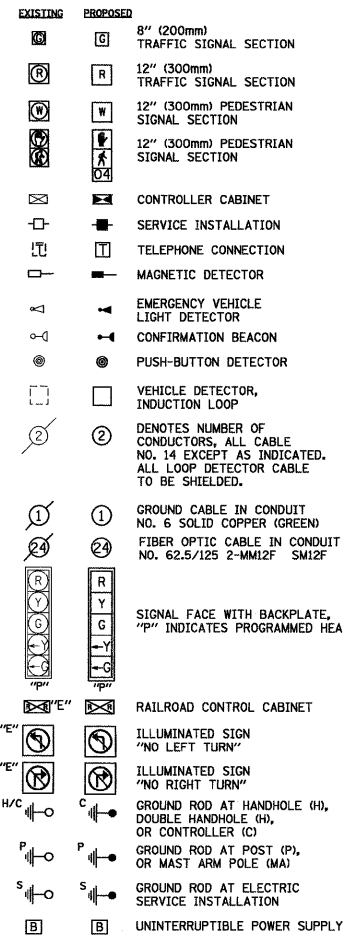
PHASE DESIGNATION DIAGRAM

EMERGENCY VEHICLE PREEMPTION SEQUENCE



PROPOSED EMERGENCY VEHICLE PREEMPTOR		
EMERGENCY VEHICLE PREEMPTOR	3	4
MOVEMENT	← →	↑ ↓

CABLE PLAN LEGEND



SCHEDULE OF QUANTITIES

SIGN PANEL, TYPE 1	54	SO FT
CONDUIT IN TRENCH, 2" DIA., GALVANIZED STEEL	521	FOOT
CONDUIT IN TRENCH, 1 1/2" DIA., GALVANIZED STEEL	176	FOOT
CONDUIT IN TRENCH, 4" DIA., GALVANIZED STEEL	10	FOOT
CONDUIT PUSHED, 3" DIA., GALVANIZED STEEL	167	FOOT
CONDUIT PUSHED, 4" DIA., GALVANIZED STEEL	93	FOOT
HANDHOLE	1	EACH
HEAVY DUTY HANDHOLE	4	EACH
DOUBLE HANDHOLE	1	EACH
TRENCH AND BACKFILL FOR ELECTRICAL WORK	707	FOOT
FULL-ACTUATED CONTROLLER AND TYPE IV CABINET, SPECIAL	1	EACH
ELECTRIC CABLE IN CONDUIT, SIGNAL NO. 14 3C	314	FOOT
ELECTRIC CABLE IN CONDUIT, SIGNAL NO. 14 5C	1427	FOOT
ELECTRIC CABLE IN CONDUIT, SIGNAL NO. 14 7C	675	FOOT
ELECTRIC CABLE IN CONDUIT, LEAD-IN, NO. 14 1 PAIR	1259	FOOT
ELECTRIC CABLE IN CONDUIT, SERVICE, NO. 6 2C	35	FOOT
STEEL MAST ARM ASSEMBLY AND POLE, 28 FT.	4	EACH
CONCRETE FOUNDATION, TYPE A	16	FOOT
CONCRETE FOUNDATION, TYPE C	4	FOOT
CONCRETE FOUNDATION, TYPE E 36-INCH DIAMETER	60	FOOT
SIGNAL HEAD, LED, 1-FACE, 3-SECTION, MAST-ARM MOUNTED	6	EACH
SIGNAL HEAD, LED, 1-FACE, 3-SECTION, BRACKET MOUNTED	2	EACH
SIGNAL HEAD, LED, 1-FACE, 5-SECTION, BRACKET MOUNTED	2	EACH
SIGNAL HEAD, LED, 1-FACE, 5-SECTION, MAST-ARM MOUNTED	2	EACH
TRAFFIC SIGNAL BACKPLATE, LOUVERED, ALUMINUM	8	EACH
INDUCTIVE LOOP DETECTOR	6	EACH
DETECTOR LOOP, TYPE 1	497	FOOT
TEMPORARY TRAFFIC SIGNAL INSTALLATION	1	EACH
REMOVE ELECTRIC CABLE FROM CONDUIT	3132	FOOT
REMOVE EXISTING TRAFFIC SIGNAL EQUIPMENT	1	EACH
REMOVE EXISTING HANDHOLE	6	EACH
REMOVE EXISTING CONCRETE FOUNDATION	8	EACH
PAVEMENT REPLACEMENT, BITUMINOUS	17	SQ YD
SERVICE INSTALLATION, POLE MOUNT	1	EACH
ELECTRIC CABLE IN CONDUIT, GROUNDING, NO. 6 1C	489	FOOT
ELECTRIC CABLE IN CONDUIT, NO. 20 3/C, TWISTED & SHIELDED	314	FOOT
UNINTERRUPTIBLE POWER SUPPLY	1	EACH

FOUNDATION (DEPTH)	FT. (m)	CABLE SLACK	FT. (m)	VERTICAL	FT. (m)
TYPE A - POST	4 (1.2)	HANDHOLE	6.5 (2.0)	ALL FOUNDATIONS	3.0 (1.0)
D - CONTROLLER	4 (1.2)	DOUBLE HANDHOLE	13 (4.0)	MAST ARM (L) POLE	20.0 (6.0)
E - M. ARM POLE	0 (0.0)	SIGNAL POST	0 (0.0)	BRACKET MOUNTED	13 (4.0)
24" (600mm)	10 (3.0)	CONTROLLER CAB.	0 (0.0)	PED. PUSH-BUTTON	6 (2.0)
30" (750mm)	15 (4.6)	FIBER OPTIC	13 (4.0)	ELECTRIC SERVICE	13.5 (4.1)
		ELECTRIC SERVICE	1 (0.5)	SERVICE TO GROUND	13.5 (4.1)
		GROUND CABLE	1 (0.5)	POST MOUNTED	13 (4.0)

I.D.O.T TRAFFIC SIGNAL INSTALLATION ELECTRICAL SERVICE REQUIREMENTS						TOTAL WATTAGE
TYPE	NO. LAMPS	WATTAGE INCAND.	LED	%OPERATION		
SIGNAL (RED)	12	135	17	0.50		102
(YELLOW)	12	135	25	0.25		75
(GREEN)	12	135	15	0.25		45
ARROW	8	135	12	0.10		9.6
PED. SIGNAL		90	25	1.00		
CONTROLLER	1	100	100	1.00		100
ILLUM. SIGN		84		0.05		
FLASHER				0.50		
ENERGY COSTS TO:						TOTAL = 331.6

ILLINOIS DEPARTMENT OF TRANSPORTATION
201 WEST CENTER COURT
SCHAUMBURG, IL 60196-1096

CONTACT: _____
PHONE: _____
COMPANY: COMED

FILE NAME = \MICROST\352072\ IL 7 @ CEDAR CAB.DGN
USER NAME = RDS
DESIGNED - KK
DRAWN - RDS
CHECKED - BPT
PLOT SCALE = 1"=20'
PLOT DATE = 03-18-09

DESIGNED - KK	REVISED -
DRAWN - RDS	REVISED -
CHECKED - BPT	REVISED -
DATE - 03-18-09	REVISED -

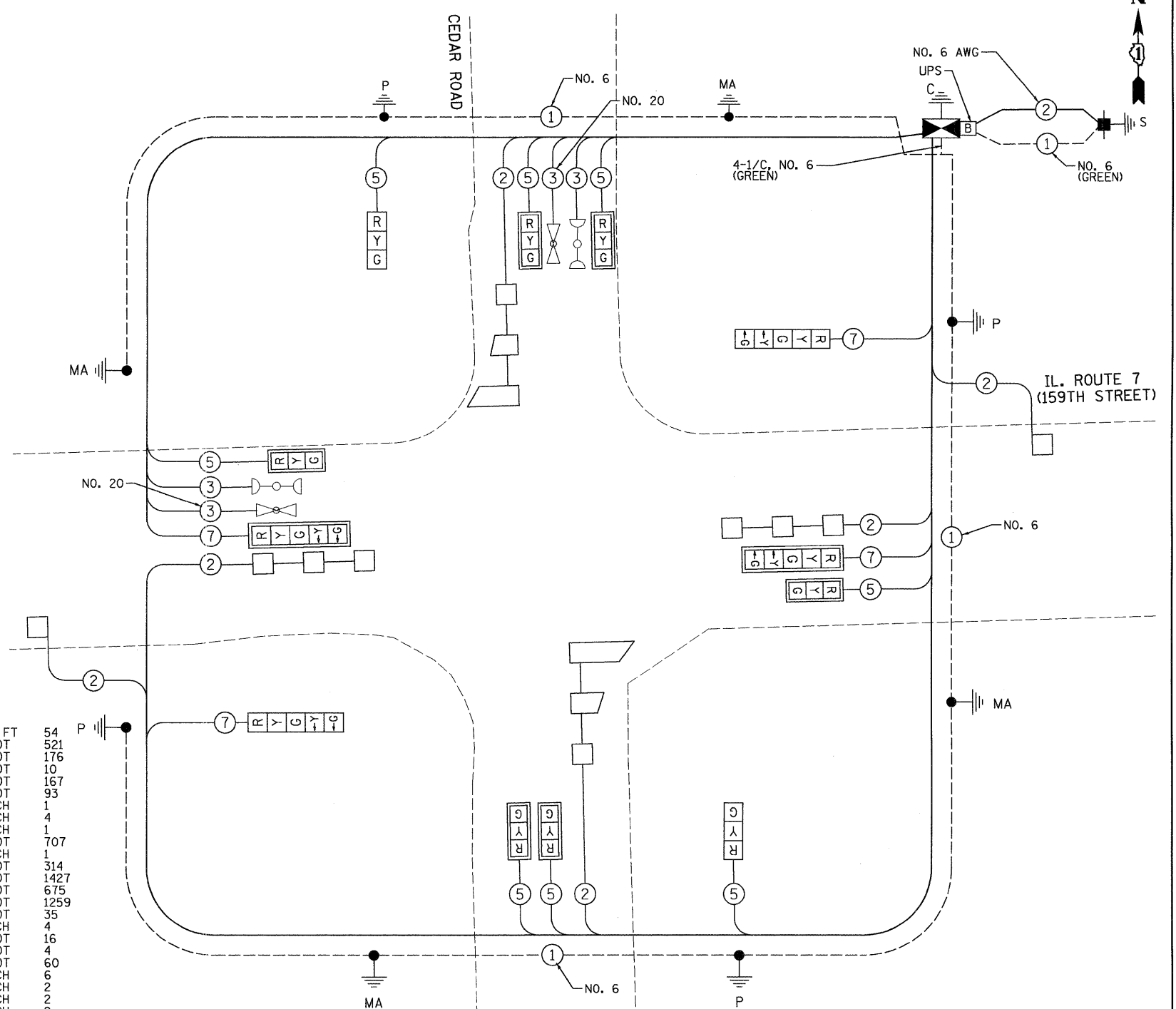
**STATE OF ILLINOIS
DEPARTMENT OF TRANSPORTATION**

SCHEDULE OF QUANTITIES, CABLE PLAN AND PHASE DESIGNATION DIAGRAM IL. ROUTE 7 (159TH STREET) AT CEDAR ROAD			
SCALE: N.T.S.	SHEET NO. OF SHEETS	STA. TO STA.	

PREPARED BY:
CEMCON, Ltd.
Consulting Engineers, Land Surveyors & Planners
2280 White Oak Circle, Suite 100
Aurora, Illinois 60504-9675
Ph: 630.862.2100 Fax: 630.862.2199
E-Mail: cadd@cemcon.com Website: www.cemcon.com

F.A.P. RTE.	SECTION	COUNTY	TOTAL SHEETS	SHEET NO.
	2009-038 TS	WILL	19	12

CONTRACT NO. 60G43
FED. ROAD DIST. NO. ILLINOIS FED. AID PROJECT



CABLE PLAN