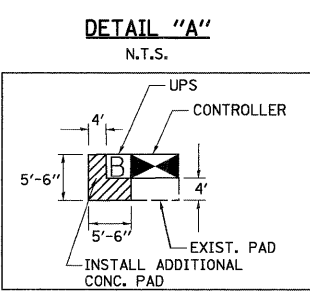


THE FOLLOWING ITEMS SHALL BE REMOVED BY THE CONTRACTOR AND SHALL BE DISPOSED OF BY THEM OUTSIDE THE RIGHT-OF-WAY AT THEIR EXPENSE. THE SALVAGE VALUE OF THE REMOVED EQUIPMENT SHALL BE REFLECTED IN THE CONTRACT BID PRICE.

- 1 EACH CONTROLLER
- 4 EACH SIGNAL HEAD, 3-SECTION
- 2 EACH SIGNAL HEAD, 5-SECTION
- 1 EACH SIGNAL HEAD, 2-FACE, 2-3-SECTION
- 2 EACH TRAFFIC SIGNAL BACKPLATE
- 3 EACH TRAFFIC SIGNAL POST

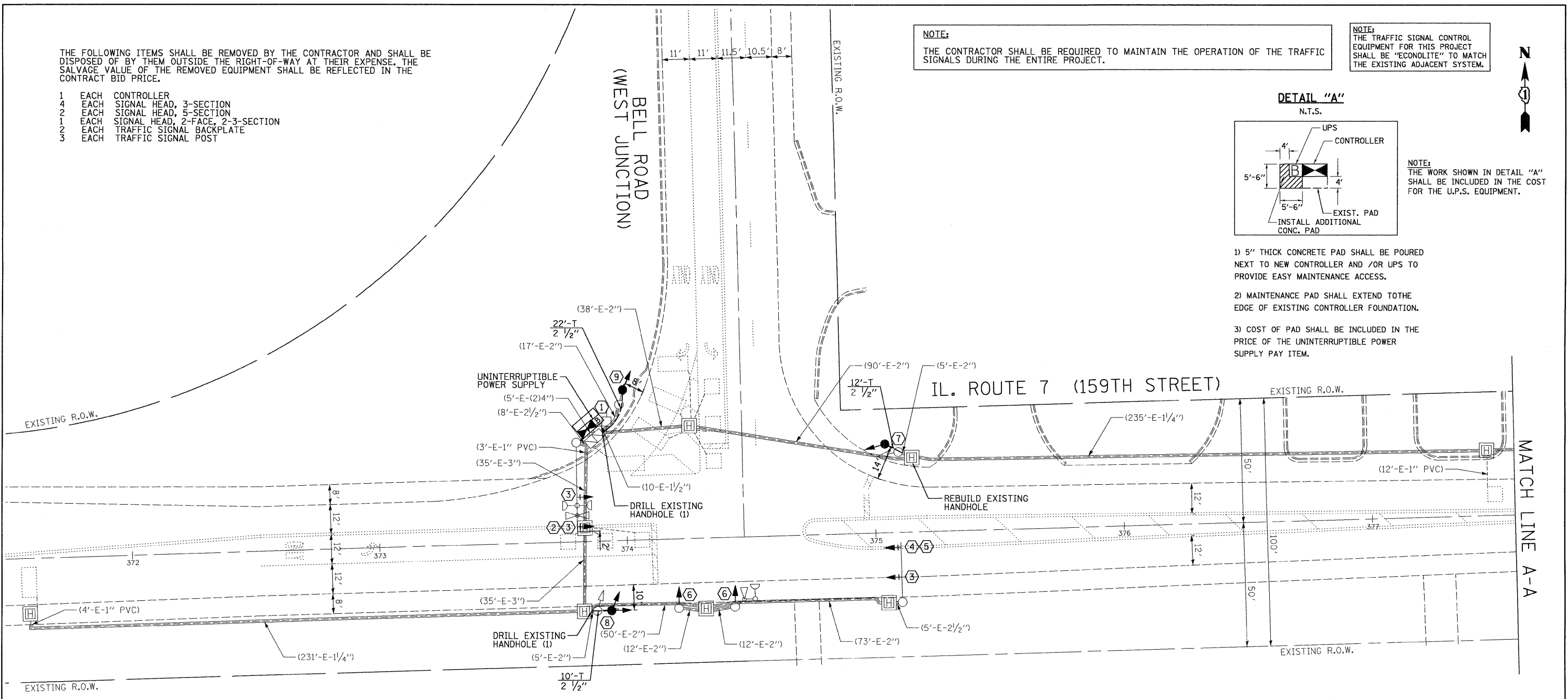
NOTE:
THE CONTRACTOR SHALL BE REQUIRED TO MAINTAIN THE OPERATION OF THE TRAFFIC SIGNALS DURING THE ENTIRE PROJECT.

NOTE:
THE TRAFFIC SIGNAL CONTROL EQUIPMENT FOR THIS PROJECT SHALL BE "ECONOLITE" TO MATCH THE EXISTING ADJACENT SYSTEM.



NOTE:
THE WORK SHOWN IN DETAIL "A" SHALL BE INCLUDED IN THE COST FOR THE U.P.S. EQUIPMENT.

- 1) 5" THICK CONCRETE PAD SHALL BE POURED NEXT TO NEW CONTROLLER AND /OR UPS TO PROVIDE EASY MAINTENANCE ACCESS.
- 2) MAINTENANCE PAD SHALL EXTEND TO THE EDGE OF EXISTING CONTROLLER FOUNDATION.
- 3) COST OF PAD SHALL BE INCLUDED IN THE PRICE OF THE UNINTERRUPTIBLE POWER SUPPLY PAY ITEM.



REMOVAL AND INSTALLATION NOTES:

- ① REMOVE EXISTING CONTROLLER, INSTALL NEW FULL-ACTUATED CONTROLLER IN EXISTING CABINET. INSTALL 4 FT CONCRETE MAINTENANCE PAD (SEE DETAIL "A" THIS SHEET). INSTALL UPS.
- ② REMOVE EXISTING SIGNAL HEAD, 1-FACE 3-SECTION, MAST ARM MOUNTED.
- ③ INSTALL NEW SIGNAL HEAD, LED, 1-FACE 3-SECTION, MAST ARM MOUNTED.
- ④ REMOVE EXISTING SIGNAL HEAD, 1-FACE 5-SECTION, MAST ARM MOUNTED.
- ⑤ INSTALL NEW SIGNAL HEAD, LED, 1-FACE 5-SECTION, MAST ARM MOUNTED.
- ⑥ REMOVE EXISTING SIGNAL HEAD, 1-FACE 3-SECTION, BRACKET MOUNTED. INSTALL NEW SIGNAL HEAD, LED, 1-FACE 3-SECTION, BRACKET MOUNTED.
- ⑦ REMOVE EXISTING SIGNAL HEAD, 1-FACE 5-SECTION, BRACKET MOUNTED. REMOVE EXISTING TRAFFIC SIGNAL POST. REMOVE EXISTING CONCRETE FOUNDATION. INSTALL NEW TRAFFIC SIGNAL POST, 16 FT ON NEW FOUNDATION AT PROPOSED LOCATION AS SHOWN IN PLAN. INSTALL NEW SIGNAL HEAD, LED, 1-FACE 5-SECTION, BRACKET MOUNTED.
- ⑧ REMOVE EXISTING SIGNAL HEAD, 2-FACE 3-SECTION, BRACKET MOUNTED. REMOVE EXISTING TRAFFIC SIGNAL POST. REMOVE EXISTING CONCRETE FOUNDATION. INSTALL NEW TRAFFIC SIGNAL POST, 14 FT ON NEW FOUNDATION AT PROPOSED LOCATION AS SHOWN IN PLAN. INSTALL NEW SIGNAL HEAD, LED, 2-FACE 3-SECTION, BRACKET MOUNTED.
- ⑨ REMOVE EXISTING SIGNAL HEAD, 1-FACE 3-SECTION, BRACKET MOUNTED. REMOVE EXISTING TRAFFIC SIGNAL POST. REMOVE EXISTING CONCRETE FOUNDATION. INSTALL NEW TRAFFIC SIGNAL POST, 14 FT ON NEW FOUNDATION AT PROPOSED LOCATION AS SHOWN IN PLAN. INSTALL NEW SIGNAL HEAD, LED, 1-FACE 3-SECTION, BRACKET MOUNTED.

TRAFFIC SIGNAL LEGEND

	PROPOSED	EXISTING		PROPOSED	EXISTING
CONTROLLER			PEDESTRIAN PUSH-BUTTON DETECTOR		
SERVICE INSTALLATION			DETECTOR LOOP, TYPE I		
SIGNAL HEAD			CAST IRON JUNCTION BOX		
SIGNAL HEAD WITH BACKPLATE			EMERGENCY VEHICLE SYSTEM DETECTOR		
SIGNAL HEAD, PEDESTRIAN			CONFIRMATION BEACON		
SIGNAL POST			SIGNAL HEAD OPTICALLY PROGRAMMED		
STEEL MAST ARM ASSEMBLY AND POLE			CONDUIT SPLICE		
MAST ARM ASSEMBLY AND POLE, ALUMINUM			WOOD POLE		
STEEL COMBINATION MAST ARM ASSEMBLY AND POLE WITH LUMINAIRE			RACEWAY FOR MAGNETIC DETECTOR, TYPE I OR TYPE II		
UNIT DUCT			VEHICLE DETECTOR, NON COMPENSATED MAGNETIC TYPE		
COMMON TRENCH			RAILROAD CONTROL CABINET		
HANDHOLE			TELEPHONE CONNECTION		
HEAVY DUTY HANDHOLE			ILLUMINATED SIGN		
DOUBLE HANDHOLE			"NO LEFT TURN"		
G.S. CONDUIT IN TRENCH (T) OR PUSHED (P)			ILLUMINATED SIGN		
			"NO RIGHT TURN"		
			UNINTERRUPTIBLE POWER SUPPLY		

FILE NAME = \MICROST\352072\ IL 7 @ BELL SIG@1.DGN	USER NAME = RDS	DESIGNED - KK	REVISED -	STATE OF ILLINOIS DEPARTMENT OF TRANSPORTATION	TRAFFIC SIGNAL MODIFICATION PLAN IL. ROUTE 7 (159TH STREET) AT BELL ROAD (WEST JUNCTION)				 CEMCON, Ltd. Consulting Engineers, Land Surveyors & Planners 2280 White Oak Circle, Suite 100 Aurora, Illinois 60504-9675 Ph: 630.862.2100 Fax: 630.862.2199 E-Mail: cadd@cemcon.com Website: www.cemcon.com
	PLOT SCALE = 1"=20'	DRAWN - RDS	REVISED -		SCALE: N.T.S.	SHEET NO. OF SHEETS	STA. TO STA.	F.A.P. RTE.	
	PLOT DATE = 03-18-09	CHECKED - BPT	REVISED -					SECTION	
		DATE - 03-18-09	REVISED -					COUNTY	
							TOTAL SHEETS		
							SHEET NO.		
							CONTRACT NO. 60G43		
							FED. ROAD DIST. NO.		
							ILLINOIS FED. AID PROJECT		