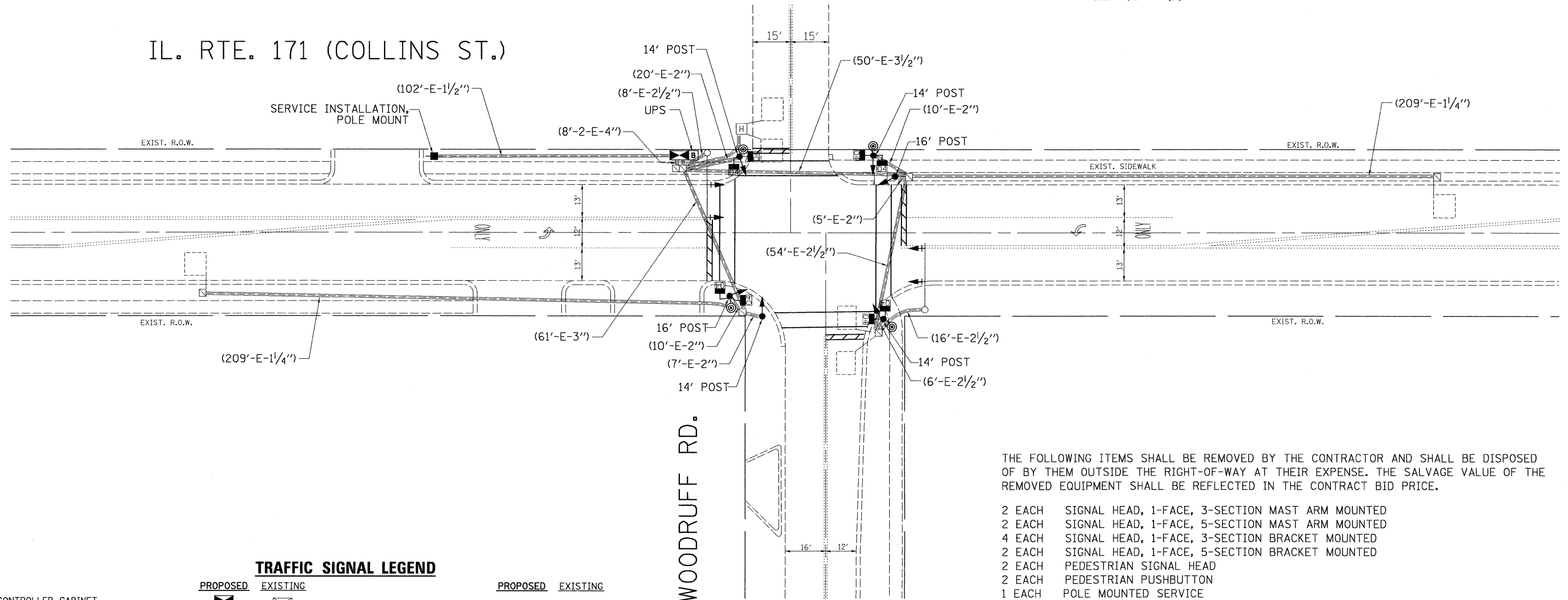




IL. RTE. 171 (COLLINS ST.)



THE FOLLOWING ITEMS SHALL BE REMOVED BY THE CONTRACTOR AND SHALL BE DISPOSED OF BY THEM OUTSIDE THE RIGHT-OF-WAY AT THEIR EXPENSE. THE SALVAGE VALUE OF THE REMOVED EQUIPMENT SHALL BE REFLECTED IN THE CONTRACT BID PRICE.

- 2 EACH SIGNAL HEAD, 1-FACE, 3-SECTION MAST ARM MOUNTED
- 2 EACH SIGNAL HEAD, 1-FACE, 5-SECTION MAST ARM MOUNTED
- 4 EACH SIGNAL HEAD, 1-FACE, 3-SECTION BRACKET MOUNTED
- 2 EACH SIGNAL HEAD, 1-FACE, 5-SECTION BRACKET MOUNTED
- 2 EACH PEDESTRIAN SIGNAL HEAD
- 2 EACH PEDESTRIAN PUSHBUTTON
- 1 EACH POLE MOUNTED SERVICE

**TRAFFIC SIGNAL LEGEND**

	PROPOSED	EXISTING		PROPOSED	EXISTING
CONTROLLER CABINET					
RAILROAD CONTROL CABINET					
SERVICE INSTALLATION, (P) POLE OR (G) GROUND MOUNT					
TELEPHONE CONNECTION					
SIGNAL HEAD					
SIGNAL HEAD WITH BACKPLATE					
SIGNAL HEAD OPTICALLY PROGRAMMED					
SIGNAL HEAD PEDESTRIAN WITH COUNTDOWN TIMER					
ILLUMINATED SIGN "NO LEFT TURN"					
ILLUMINATED SIGN "NO RIGHT TURN"					
SIGNAL POST					
WOOD POLE					
STEEL MAST ARM ASSEMBLY AND POLE					
ALUMINUM MAST ARM ASSEMBLY AND POLE					
STEEL COMBINATION MAST ARM ASSEMBLY AND POLE WITH LUMINAIRE					

**NOTE:**

1. EXISTING TRAFFIC SIGNAL CABLES 2/C & 3/C WILL BE REUSED TO INSTALL THE PEDESTRIAN SIGNAL 2-FACE AT THE LOCATION SHOWN.