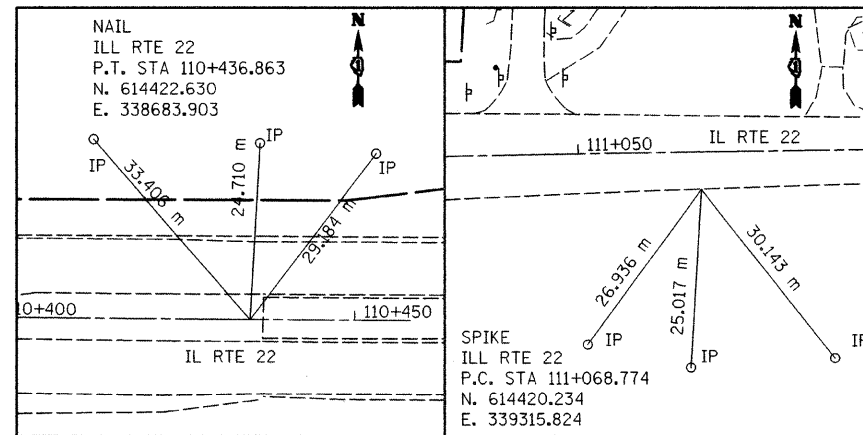


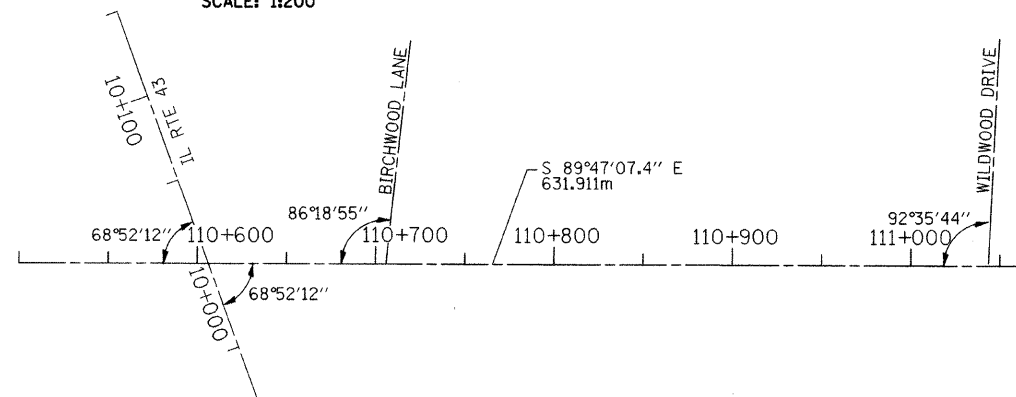
F.A.P. RTE.	SECTION	COUNTY	TOTAL SHEETS	SHEET NO.
337	Y-T-1	LAKE	6	2
STA.		TO STA.		
FED. ROAD DIST. NO. 1		ILLINOIS FED. AID PROJECT		

TIES



ALIGNMENT

SCALE: 1:200



GENERAL NOTES

- BEFORE STARTING ANY EXCAVATION, THE CONTRACTOR SHALL CALL "JULIE" AT 800-892-0123 FOR FIELD LOCATIONS OF BURIED ELECTRIC, TELEPHONE AND GAS FACILITIES. (48 HOURS NOTIFICATION IS REQUIRED).
- THE CONTRACTOR SHALL COORDINATE CONSTRUCTION ACTIVITIES WITH UTILITY COMPANIES AND THE VILLAGE OF BANNOCKBURN.
- THE CONTRACTOR WILL NOT BE ALLOWED TO SET UP A YARD OR FIELD OFFICE ON STATE PROPERTY WITHOUT WRITTEN PERMISSION FROM THE DEPARTMENT.
- BARRICADES: THE CONTRACTOR SHALL PROVIDE AND INSTALL TWO (2) WEIGHTED SAND BAGS ON EACH TYPE I OR TYPE II BARRICADE USED. (ONE (1) WEIGHTED SAND BAG ACROSS EACH BOTTOM RAIL).
- THE PROJECT CONTRACT PLANS AND DOCUMENTS ARE IN METRIC UNIT.

SOIL EROSION & SEDIMENT CONTROL

- THE CONTRACTOR WILL ASSUME RESPONSIBILITY FOR MAINTENANCE OF ALL SOIL EROSION CONTROL DURING CONSTRUCTION.
- LOOSE MATERIAL DEPOSITED IN THE FLOW LINE OF THE GUTTERS OR DRAINAGE STRUCTURES SO THAT THE NATURAL FLOW OF WATER IS OBSTRUCTED SHALL BE REMOVED AT THE CLOSE OF EACH WORKING DAY.
- THE LANDSCAPING AND EROSION CONTROL MEASURES SHOWN ARE BUT A GRAPHICAL REPRESENTATION OF SUGGESTED MEASURES. DEVIATIONS FROM THIS PLAN ARE TO BE EXPECTED PENDING A JOB SITE INSPECTION BETWEEN THE CONTRACTOR AND THE DEPARTMENT.
- UNLESS OTHERWISE INDICATED, ALL VEGETATIVE AND STRUCTURAL EROSION AND SEDIMENT CONTROL PRACTICES WILL BE CONSTRUCTED ACCORDING TO MINIMUM STANDARDS AND SPECIFICATIONS IN THE ILLINOIS URBAN MANUAL REVISED FEBRUARY 2002.
- ALL EROSION CONTROL MEASURES MUST BE INSPECTED EVERY SEVEN DAYS AND AFTER EACH 1/2" RAIN EVENT.

BENCHMARK

- BENCHMARK 110 FOUND SQUARE CUT IN CONCRETE BASE OF TRAFFIC SIGNAL WITH ARM AT SOUTHWEST CORNER OF ILLINOIS ROUTE 22 AND ILLINOIS 43
ELEVATION: 205.2030m
- BENCHMARK 111 FOUND SQUARE CUT IN NORTHWEST CORNER WING WALL OF ILLINOIS ROUTE 22 BRIDGE OVER NORTH BRANCH OF CHICAGO RIVER
ELEVATION: 201.6009m
- BENCHMARK 119 SET SQUARE CUT IN END OF LONG ISLAND EAST SIDE OF ROUTE 43 SOUTH 152.4m OF ILLINOIS ROUTE 22 AT EXIT OF BANNOCKBURN GREEN
ELEVATION: 203.7486m

SUMMARY OF QUANTITIES

CODE NO.	PAY ITEM	UNIT	URBAN 100% STATE TOTAL QTY.
M2020010	EARTH EXCAVATION	CU M	337
M2113100	TOPSOIL FURNISH AND PLACE, 100 mm	SQ M	1,559
M2021200	REMOVAL AND DISPOSAL OF UNSUITABLE MATERIAL	CU M	237
M2500400	NITROGEN FERTILIZER NUTRIENT	KG	11
M2520110	SODDING, SALT TOLERANT	SQ M	1,559
M2500500	PHOSPHORUS FERTILIZER NUTRIENT	KG	11
28000510	INLET FILTERS	EACH	5
M2500600	POTASSIUM FERTILIZER NUTRIENT	KG	11
M5502900	STORM SEWERS, TYPE 1, REINFORCED CONCRETE CULVERT, STORM DRAIN, AND SEWER PIPE, CLASS III 750 MM	METER	7
M2520200	SUPPLEMENTAL WATERING	UNIT	38
M5504800	STORM SEWERS TO BE CLEANED	METER	6
60206705	CATCH BASINS, TYPE B	EACH	4
60402110	GRATES, TYPE 7	EACH	4
60500050	REMOVING CATCH BASINS	EACH	2
67100100	MOBILIZATION	L SUM	1
70101700	TRAFFIC CONTROL AND PROTECTION	L SUM	1
70106800	CHANGEABLE MESSAGE SIGN	CAL MO	1
MX032985	VIDEO TAPING STORM SEWERS	METER	925
XX005656	INLET FILTER CLEANING	EACH	5
Z0013798	CONSTRUCTION LAYOUT	L SUM	1
Z0018500	DRAINAGE STRUCTURES TO BE CLEANED	EACH	2

EARTHWORK QUANTITIES

LOCATION (STA TO STA)	EARTH EX. (CU m)	ADJ. EARTH EX. (15%)	EMBANKMENT (CU m)	BALANCE WASTE (+) OR SHORTAGE (-)
110+780.20 TO 110+896	337.396	286.787	69.033	217.754
TOTAL	337			218

REVISIONS	
NAME	DATE

ILLINOIS DEPARTMENT OF TRANSPORTATION
FAP ROUTE 337 (IL. RTE. 22)

IL. RTE. 22

GENERAL NOTES, SUMMARY OF QUANTITIES,
ALIGNMENT, BENCHMARK AND TIES

SCALE: NONE
DATE MARCH 20, 2009

DRAWN BY DC
CHECKED BY JIP