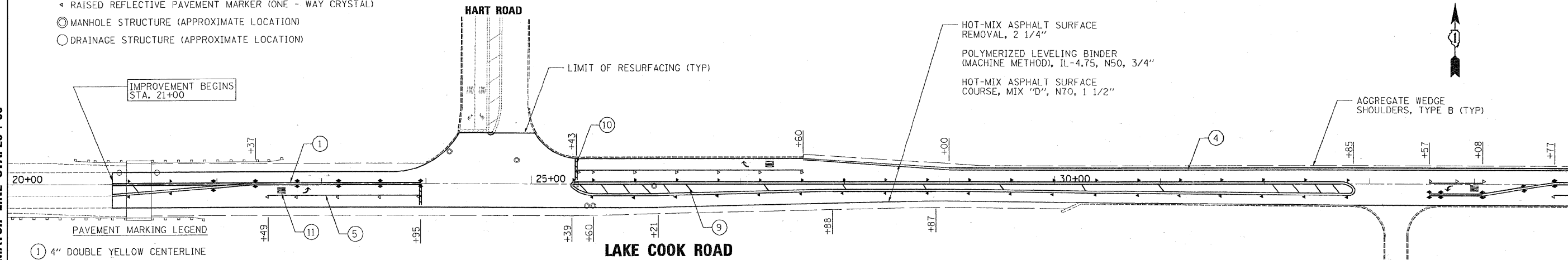


**SYMBOLS LEGEND**

- ◆ RAISED REFLECTIVE PAVEMENT MARKER (TWO - WAY AMBER)
- ◆ RAISED REFLECTIVE PAVEMENT MARKER (ONE - WAY AMBER)
- ◆ RAISED REFLECTIVE PAVEMENT MARKER (ONE - WAY CRYSTAL)
- MANHOLE STRUCTURE (APPROXIMATE LOCATION)
- DRAINAGE STRUCTURE (APPROXIMATE LOCATION)

MATCH LINE STA. 20+00

MATCH LINE STA. 35+00



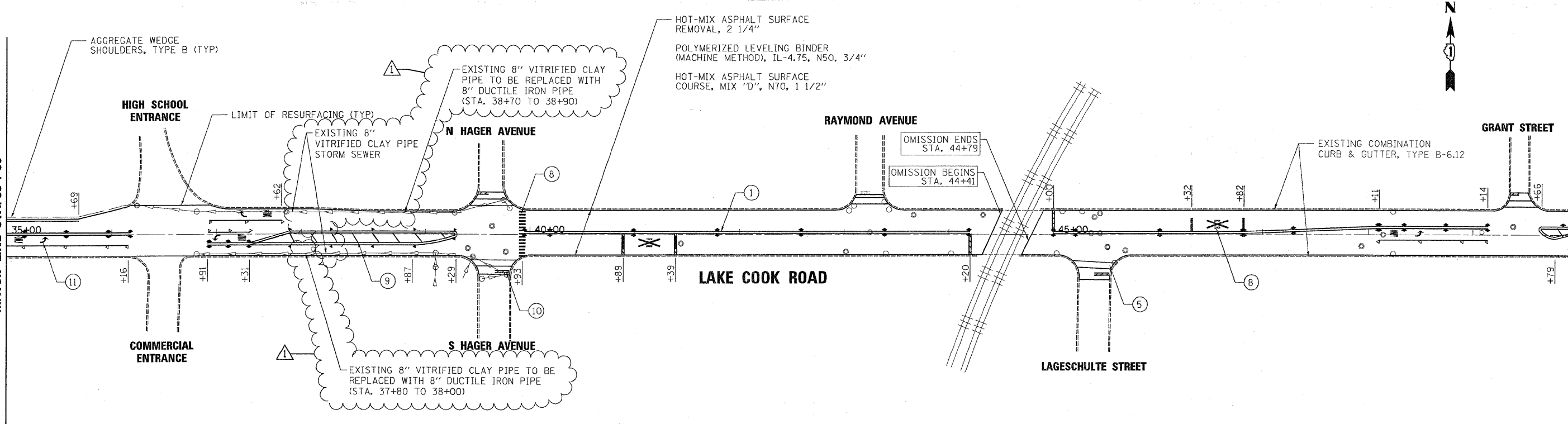
**PAVEMENT MARKING LEGEND**

- ① 4" DOUBLE YELLOW CENTERLINE
- ② 4" SOLID YELLOW LINE AND 30' SKIP, 10' DASH
- ③ 4" CENTERLINE, YELLOW (30' SKIP, 10' DASH)
- ④ 4" SOLID LINE, WHITE
- ⑤ 6" SOLID LINE, WHITE
- ⑥ 6" LINE, WHITE (30' SKIP, 10' DASH)
- ⑦ 6" LINE, WHITE (6' SKIP, 2' DASH)
- ⑧ 12" SOLID LINE, WHITE
- ⑨ 12" SOLID LINE, YELLOW
- ⑩ 24" SOLID LINE, WHITE
- ⑪ LETTERS AND SYMBOLS, WHITE

•ALL PAVEMENT MARKING SHALL BE THERMOPLASTIC

MATCH LINE STA. 35+00

MATCH LINE STA. 50+00



PLOT DATE = 5/27/2009  
 FILE NAME = K:\11225514\Lake-Cook\_Road\Cad\Sheets\LakeCook-01.dgn  
 PLOT SCALE = 1:50  
 PLOT NAME = Project  
 MODEL = Depict

**rjngroup**  
 Excellence through Ownership  
 200 West Front Street  
 Wheaton, IL 60187

DESIGNED - MAK	REVISED - 5/26/09 BLB
DRAWN - JMT	REVISED -
CHECKED - BLB	REVISED -
DATE - 5/27/2009 9:48:29 AM	REVISED -

**STATE OF ILLINOIS  
 DEPARTMENT OF TRANSPORTATION**

**LAKE COOK ROAD  
 PLAN AND PAVEMENT MARKING DETAILS**

SCALE: 1"=50'  
 SHEET NO. 6 OF 30 SHEETS  
 STA. 20+00 TO STA. 50+00

F.A.P. RTE.	SECTION	COUNTY	TOTAL SHEETS	SHEET NO.
1270	0506 RS-12	LAKE	30	6
FED. ROAD DIST. NO. 1 ILLINOIS FED. AID PROJECT			CONTRACT NO. 60H02	