

| SUMMARY OF QUANTITIES | | | | 100% STATE TOTAL QUANTITY | CONSTRUCTION TYPE CODE 1000-2A |
|-----------------------|--|--------|--------|------------------------------------|--------------------------------------|
| CODE NO. | ITEM DESCRIPTION | UNIT | | | |
| 20201006 | GRADING AND SHAPING SHOULDERS | UNIT | 310 | 310 | |
| 40600200 | BITUMINOUS MATERIALS (PRIME COAT) | TON | 38 | 38 | |
| 40600300 | AGGREGATE (PRIME COAT) | TON | 188 | 188 | |
| 40600400 | MIXTURE FOR CRACKS, JOINTS, AND FLANGEWAYS | TON | 27 | 27 | |
| 40600895 | CONSTRUCTING TEST STRIP | EACH | 2 | 2 | |
| 40600982 | HOT-MIX ASPHALT SURFACE REMOVAL - BUTT JOINT | SQ YD | 1314 | 1314 | |
| 40601005 | HOT-MIX ASPHALT REPLACEMENT OVER PATCHES | TON | 1277 | 1277 | |
| 40603340 | HOT-MIX ASPHALT SURFACE COURSE, MIX "D", N70 | TON | 7889 | 7889 | |
| 42001300 | PROTECTIVE COAT | SQ YD | 100 | 100 | |
| 44000158 | HOT-MIX ASPHALT SURFACE REMOVAL, 2 1/4" | SQ YD | 93917 | 93917 | |
| 44001700 | COMBINATION CONCRETE CURB AND GUTTER REMOVAL AND REPLACEMENT | FOOT | 540 | 540 | |
| 44002216 | HOT-MIX ASPHALT REMOVAL OVER PATCHES, 4" | SQ YD | 5700 | 5700 | |
| 44201761 | CLASS D PATCHES, TYPE I, 10 INCH | SQ YD | 500 | 500 | |
| 44201765 | CLASS D PATCHES, TYPE II, 10 INCH | SQ YD | 2800 | 2800 | |
| 44201769 | CLASS D PATCHES, TYPE III, 10 INCH | SQ YD | 1157 | 1157 | |
| 44201771 | CLASS D PATCHES, TYPE IV, 10 INCH | SQ YD | 1200 | 1200 | |
| 48102100 | AGGREGATE WEDGE SHOULDER, TYPE B | TON | 1240 | 1240 | |
| 55039700 | STORM SEWERS TO BE CLEANED | FOOT | 1000 | 1000 | |
| 60300105 | FRAMES AND GRATES TO BE ADJUSTED | EACH | 30 | 30 | |
| 60300310 | FRAMES AND LIDS TO BE ADJUSTED (SPECIAL) | EACH | 164 | 164 | |
| 67000400 | ENGINEER'S FIELD OFFICE, TYPE A | CAL MO | 6 | 6 | |
| 67100100 | MOBILIZATION | L SUM | 1 | 1 | |
| • 70100450 | TRAFFIC CONTROL AND PROTECTION, STANDARD 701201 | L SUM | 1 | 1 | |
| • 70100460 | TRAFFIC CONTROL AND PROTECTION, STANDARD 701306 | L SUM | 1 | 1 | |
| • 70100310 | TRAFFIC CONTROL AND PROTECTION, STANDARD 701421 | L SUM | 1 | 1 | |
| • 70102620 | TRAFFIC CONTROL AND PROTECTION, STANDARD 701501 | L SUM | 1 | 1 | |
| • 70102635 | TRAFFIC CONTROL AND PROTECTION, STANDARD 701701 | L SUM | 1 | 1 | |
| 70300100 | SHORT-TERM PAVEMENT MARKING | FOOT | 3,271 | 3,271 | |
| • 70300210 | TEMPORARY PAVEMENT MARKING - LETTERS AND SYMBOLS | SQ FT | 932 | 932 | |
| • 70300220 | TEMPORARY PAVEMENT MARKING - LINE 4" | FOOT | 58,333 | 58,333 | |
| • 70300240 | TEMPORARY PAVEMENT MARKING - LINE 6" | FOOT | 4,148 | 4,148 | |
| • 70300260 | TEMPORARY PAVEMENT MARKING - LINE 12" | FOOT | 2,194 | 2,194 | |
| • 70300280 | TEMPORARY PAVEMENT MARKING - LINE 24" | FOOT | 908 | 908 | |

• SPECIALTY ITEM

| SUMMARY OF QUANTITIES | | | | 100% STATE TOTAL QUANTITY | CONSTRUCTION TYPE CODE 1000 |
|-----------------------|--|-------|--------|------------------------------------|-----------------------------------|
| CODE NO. | ITEM DESCRIPTION | UNIT | | | |
| 70301000 | WORK ZONE PAVEMENT MARKING REMOVAL | SQ FT | 1,091 | 1,091 | |
| • 78000100 | THERMOPLASTIC PAVEMENT MARKING - LETTERS AND SYMBOLS | SQ FT | 932 | 932 | |
| • 78000200 | THERMOPLASTIC PAVEMENT MARKING - LINE 4" | FOOT | 58,333 | 58,333 | |
| • 78000400 | THERMOPLASTIC PAVEMENT MARKING - LINE 6" | FOOT | 4,148 | 4,148 | |
| • 78000600 | THERMOPLASTIC PAVEMENT MARKING - LINE 12" | FOOT | 2,194 | 2,194 | |
| • 78000650 | THERMOPLASTIC PAVEMENT MARKING - LINE 24" | FOOT | 908 | 908 | |
| • 78100100 | RAISED REFLECTIVE PAVEMENT MARKER | EACH | 291 | 291 | |
| 78300200 | RAISED REFLECTIVE PAVEMENT MARKER REMOVAL | EACH | 260 | 260 | |
| • 88600600 | DETECTOR LOOP REPLACEMENT | FOOT | 3,462 | 3,462 | |
| X0322256 | TEMPORARY INFORMATION SIGNING | SQ FT | 52 | 52 | |
| X4067107 | POLYMERIZED LEVELING BINDER (MACHINE METHOD), IL-4.75, N50 | TON | 3945 | 3945 | |
| Z0048665 | RAILROAD PROTECTIVE LIABILITY INSURANCE | L SUM | 1 | 1 | |
| Z0018500 | DRAINAGE STRUCTURES TO BE CLEANED | EACH | 75 | 75 | |
| Z0018600 | DRAINAGE STRUCTURES TO BE RECONSTRUCTED | EACH | 5 | 5 | |
| 55100300 | STORM SEWER REMOVAL 8" | FOOT | 40 | 40 | |
| X0517100 | STORM SEWERS DUCTILE IRON PIPE 8" | FOOT | 40 | 40 | |
| Z0800150 | TRENCH BACKFILL | CU YD | 23 | 23 | |

• SPECIALTY ITEM

PLOT DATE = 4/16/2009
 PLOT SCALE = 1:500
 USER NAME = JFracney
 MODEL = Default



Excellence through Ownership

200 West Front Street
Wheaton, IL 60187

| | |
|-----------------------------|---------------|
| DESIGNED - MAK | REVISED - --- |
| DRAWN - JMT | REVISED - --- |
| CHECKED - BLB | REVISED - --- |
| DATE - 4/16/2009 1:31:20 PM | REVISED - --- |

STATE OF ILLINOIS
DEPARTMENT OF TRANSPORTATION

LAKE COOK ROAD

SUMMARY OF
QUANTITIES

| | | | | |
|------------------------|-----------------------|----------------|-----------------------|-------------------|
| F.A.P. RTE. 1270 | SECTION 0506 RS-12 | COUNTY LAKE | TOTAL SHEETS 30 | SHEET NO. 3 |
|------------------------|-----------------------|----------------|-----------------------|-------------------|

CONTRACT NO. 60H02

SCALE: SHEET NO. ___ OF 30 SHEETS STA. _____ TO STA. _____

FED. ROAD DIST. NO. 1 [ILLINOIS] FED. AID PROJECT

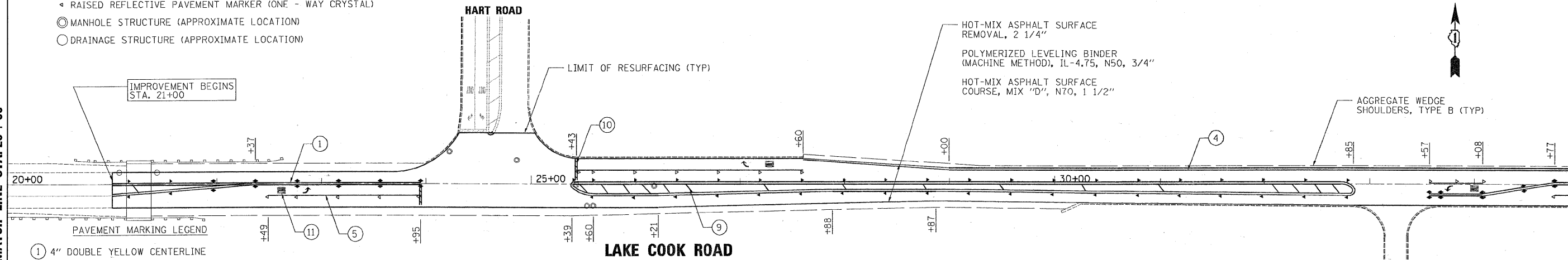
Rev. 5-28-09

SYMBOLS LEGEND

- ◆ RAISED REFLECTIVE PAVEMENT MARKER (TWO - WAY AMBER)
- ◆ RAISED REFLECTIVE PAVEMENT MARKER (ONE - WAY AMBER)
- ◆ RAISED REFLECTIVE PAVEMENT MARKER (ONE - WAY CRYSTAL)
- MANHOLE STRUCTURE (APPROXIMATE LOCATION)
- DRAINAGE STRUCTURE (APPROXIMATE LOCATION)

MATCH LINE STA. 20+00

MATCH LINE STA. 35+00



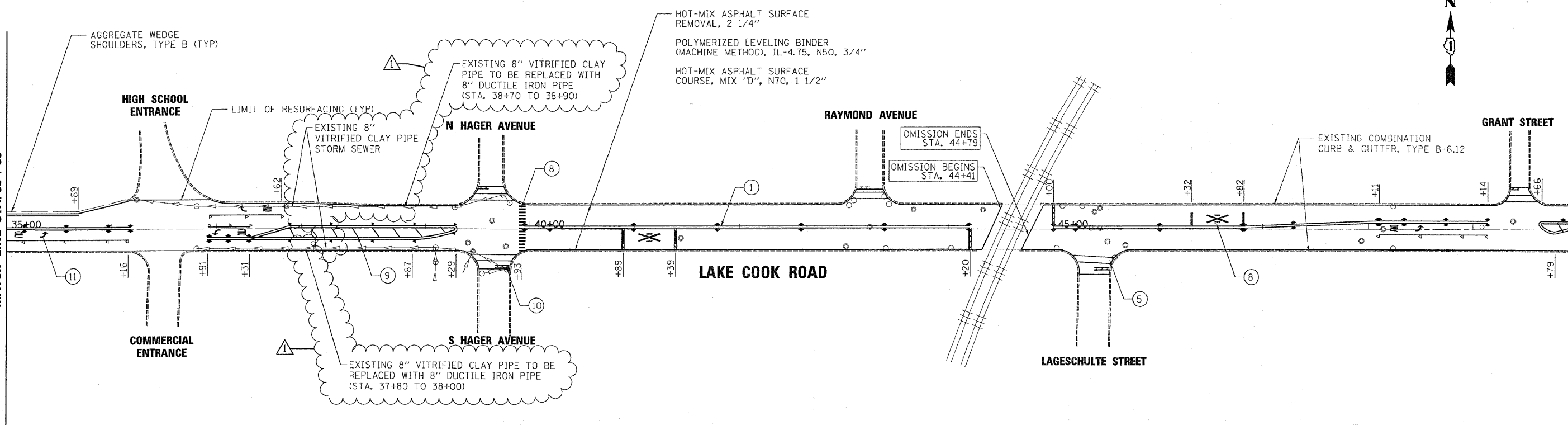
PAVEMENT MARKING LEGEND

- ① 4" DOUBLE YELLOW CENTERLINE
- ② 4" SOLID YELLOW LINE AND 30' SKIP, 10' DASH
- ③ 4" CENTERLINE, YELLOW (30' SKIP, 10' DASH)
- ④ 4" SOLID LINE, WHITE
- ⑤ 6" SOLID LINE, WHITE
- ⑥ 6" LINE, WHITE (30' SKIP, 10' DASH)
- ⑦ 6" LINE, WHITE (6' SKIP, 2' DASH)
- ⑧ 12" SOLID LINE, WHITE
- ⑨ 12" SOLID LINE, YELLOW
- ⑩ 24" SOLID LINE, WHITE
- ⑪ LETTERS AND SYMBOLS, WHITE

• ALL PAVEMENT MARKING SHALL BE THERMOPLASTIC

MATCH LINE STA. 35+00

MATCH LINE STA. 50+00



PLOT DATE = 5/27/2009
 FILE NAME = K:\11225514\Lake-Cook_Road\Cad\Sheets\LakeCook-01.dgn
 PLOT SCALE = 1:50
 PLOT NAME = Project
 MODEL = Depost



200 West Front Street
Wheaton, IL 60187

| | |
|-----------------------------|-----------------------|
| DESIGNED - MAK | REVISED - 5/26/09 BLB |
| DRAWN - JMT | REVISED - |
| CHECKED - BLB | REVISED - |
| DATE - 5/27/2009 9:48:29 AM | REVISED - |

**STATE OF ILLINOIS
DEPARTMENT OF TRANSPORTATION**

| | | | |
|-----------------------|--------------------------|--|---------------|
| LAKE COOK ROAD | | PLAN AND PAVEMENT MARKING DETAILS | |
| SCALE: 1"=50' | SHEET NO. 6 OF 30 SHEETS | STA. 20+00 | TO STA. 50+00 |

| F.A.P. RTE. | SECTION | COUNTY | TOTAL SHEETS | SHEET NO. |
|---|------------|--------|--------------------|-----------|
| 1270 | 0506 RS-12 | LAKE | 30 | 6 |
| FED. ROAD DIST. NO. 1 ILLINOIS FED. AID PROJECT | | | CONTRACT NO. 60H02 | |