

STATE OF ILLINOIS
DEPARTMENT OF TRANSPORTATION
DIVISION OF HIGHWAYS

**PROPOSED
HIGHWAY PLANS**

FAU ROUTE 1622 (183RD STREET)
OAK PARK AVENUE TO IL ROUTE 50 (CICERO AVENUE)

SECTION: 3075 RS-1

RESURFACING (3P)

COOK COUNTY

C-91-575-09

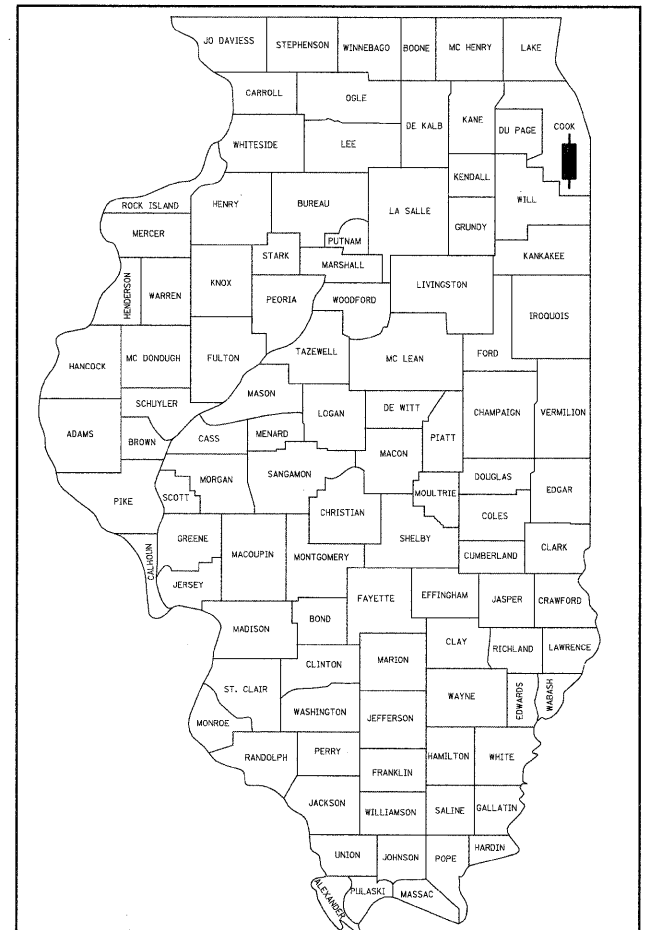
O.R. RTE.	SECTION	COUNTY	TOTAL SHEETS	SHEET NO.
1622	3075 RS-1	COOK	23	1
FED. ROAD DIST. NO.	ILLINOIS	CONTRACT NO. 60H19		

D-91-575-09

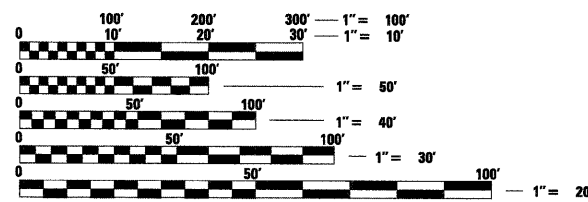
FOR INDEX OF SHEETS, SEE SHEET NO. 2

ADT 20000 (2009)
SPEED LIMIT 50 MPH

OMMISSIONS
STA. 45+38 TO STA. 53+70
STA. 78+20 TO STA. 81+40
STA. 131+80 TO STA. 134+34
STA. 149+40 TO STA. 156+40



LOCATION OF SECTION INDICATED THUS: - [highlighted area] -

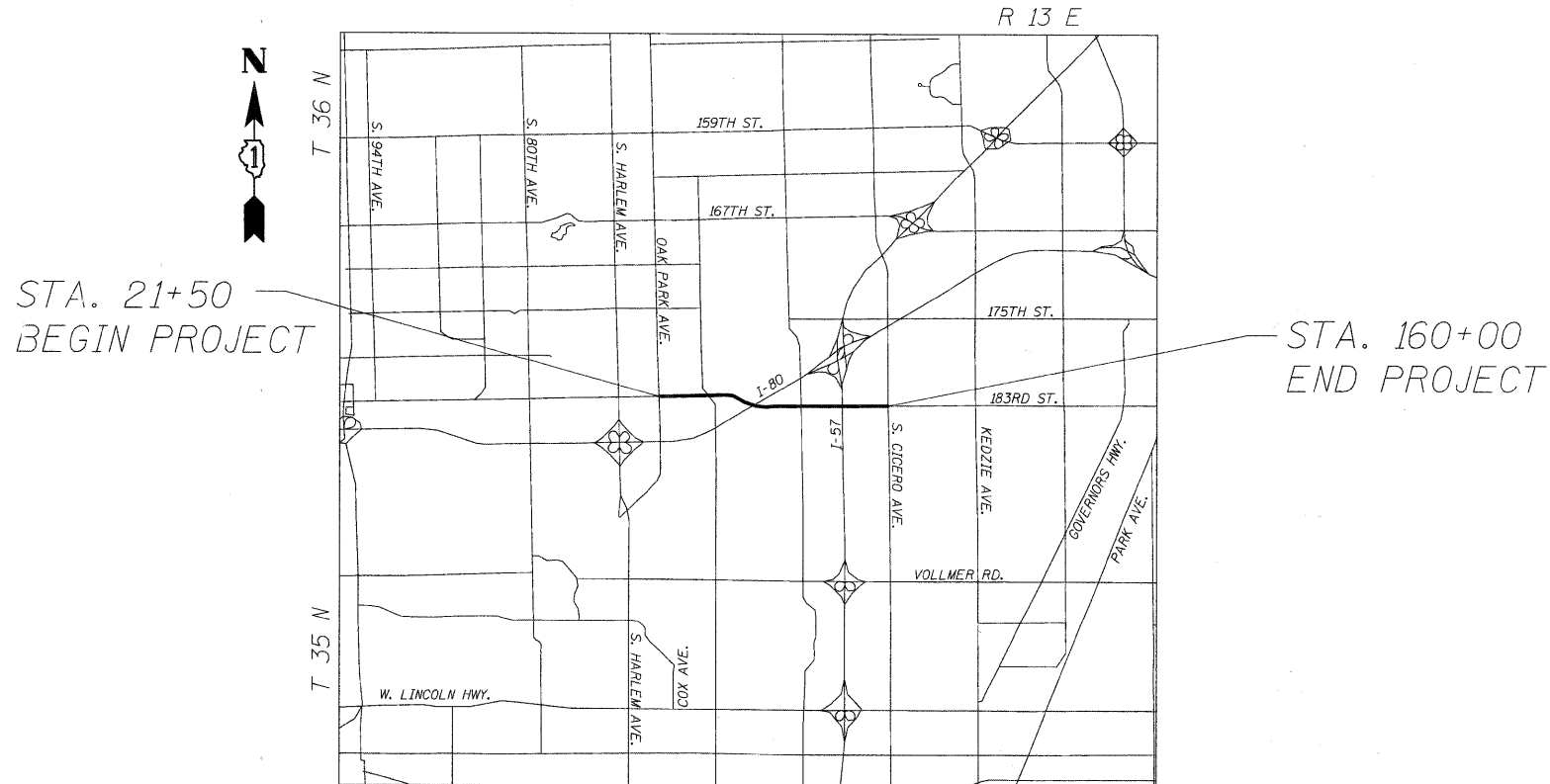


FULL SIZE PLANS HAVE BEEN PREPARED USING STANDARD ENGINEERING SCALES. REDUCED SIZED PLANS WILL NOT CONFORM TO STANDARD SCALES. IN MAKING MEASUREMENTS ON REDUCED PLANS, THE ABOVE SCALES MAY BE USED.

J.U.L.I.E.
JOINT UTILITY LOCATION INFORMATION FOR EXCAVATION
1-800-892-0123
OR 811

PROJECT ENGINEER: REJENDRA C. SHAH (847) 705-4555
PROJECT MANAGER: CATHERINE KIBBLE (847) 705-4269

CONTRACT NO. 60H19



STA. 21+50
BEGIN PROJECT

STA. 160+00
END PROJECT

LOCATION SKETCH

GROSS LENGTH OF PROJECT = 13,850' = 2.623 MI
NET LENGTH OF PROJECT = 11,744' = 2.224 MI

STATE OF ILLINOIS
DEPARTMENT OF TRANSPORTATION
DIVISION OF HIGHWAYS

SUBMITTED APRIL 15, 2009

Diane M. O'Keefe DEPUTY DIRECTOR OF HIGHWAYS, REGION ENGINEER

May 1, 2009
Charles J. Engersoll ENGINEER OF DESIGN AND ENVIRONMENT

May 1, 2009
Christine M. Reed DIRECTOR OF HIGHWAYS, CHIEF ENGINEER

PRINTED BY THE AUTHORITY
OF THE STATE OF ILLINOIS

LONGO, INC.
CONSULTING ENGINEERS
1560 WALL ST., SUITE 222
NAPERVILLE, ILLINOIS 60563 Ph: (630) 577-9100

WILLIAM H. EPSTEIN
092-047827
REGISTERED
PROFESSIONAL
ENGINEER
William H. Epstein
Expires 1/30/09