

STATE OF ILLINOIS
DEPARTMENT OF TRANSPORTATION
DIVISION OF HIGHWAYS

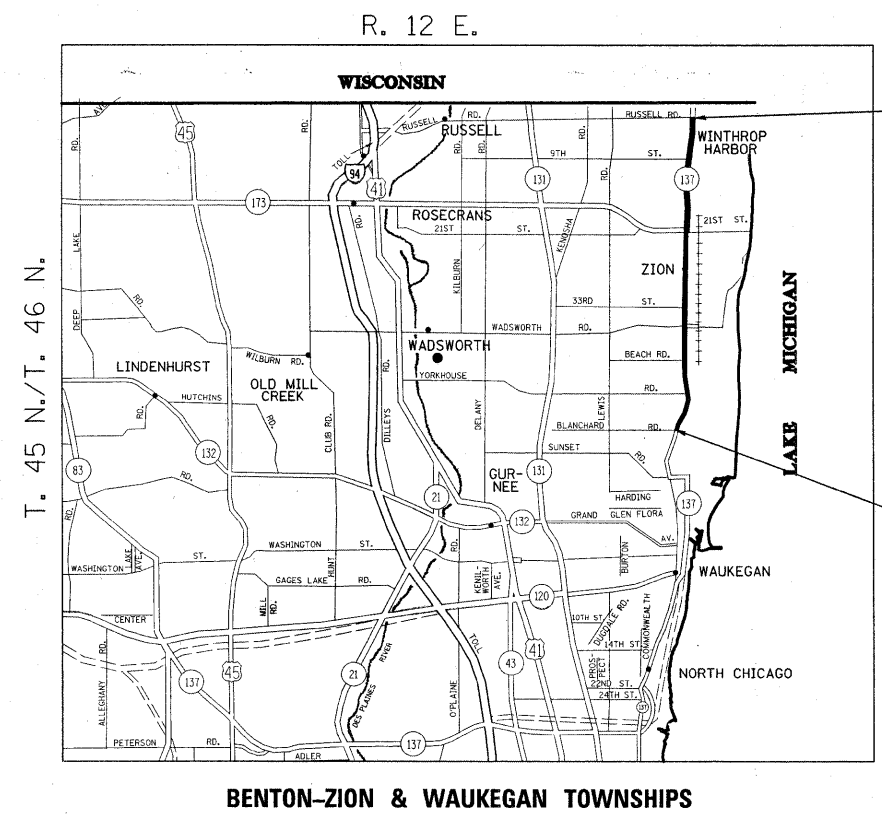
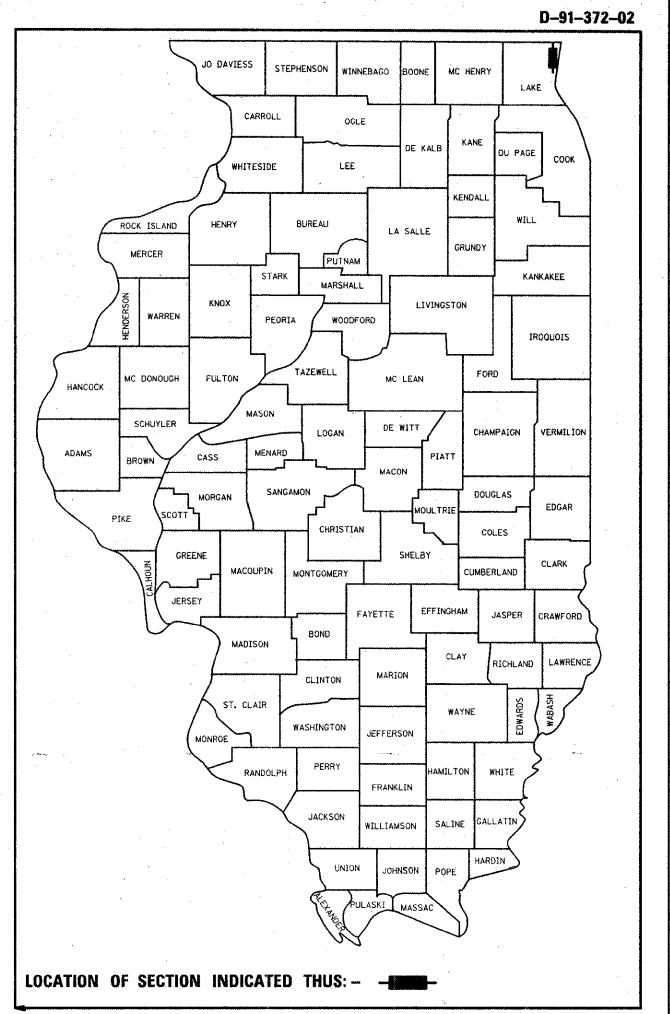
PROPOSED HIGHWAY PLANS

F.A.P. RTE. 352	SECTION (E.M.D) RS-4	COUNTY LAKE	TOTAL SHEETS 1/1	SHEET NO. 1
FED. ROAD DIST. NO.	ILLINOIS	CONTRACT NO. 62545		

FOR INDEX OF SHEETS, SEE SHEET NO. 2

THE IMPROVEMENT IS LOCATED IN THE CITY OF ZION AND IN THE VILLAGES OF WINTHROP HARBOR AND BEACH PARK

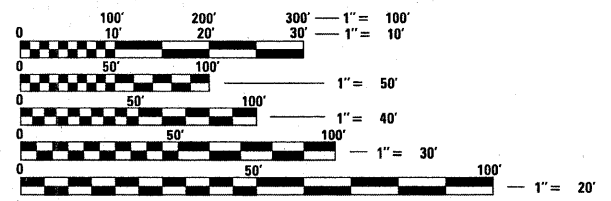
F.A.P. ROUTE 352: ILL RTE. 137
SECTION: (E.M.D) RS-4
BLANCHARD RD. TO RUSSELL RD.
RESURFACING
LAKE COUNTY
C-91-372-02



IMPROVEMENT ENDS
STA. 499 + 88

IMPROVEMENT BEGINS
STA. 155 + 72

TRAFFIC DATA
2006 ADT = 18,800
SPEED LIMIT = 40 MPH



FULL SIZE PLANS HAVE BEEN PREPARED USING STANDARD ENGINEERING SCALES. REDUCED SIZED PLANS WILL NOT CONFORM TO STANDARD SCALES. IN MAKING MEASUREMENTS ON REDUCED PLANS, THE ABOVE SCALES MAY BE USED.

J.U.L.I.E.
JOINT UTILITY LOCATION INFORMATION FOR EXCAVATION
1-800-892-0123
OR 811

PROJECT ENGINEER - DAN WILGREEN (847) 705-4240
PROJECT MANAGER - KEN ENG (847) 705-4247

CONTRACT NO. 62545

GROSS & LENGTH OF IMPROVEMENT = 34,416 LIN. FT. = 6.52 MILES

STATE OF ILLINOIS
DEPARTMENT OF TRANSPORTATION
DIVISION OF HIGHWAYS

SUBMITTED APRIL 20, 2009

Diane M. O'Keefe 95
DEPUTY DIRECTOR OF HIGHWAYS, REGION ENGINEER

May 1, 2009
Charles J. Ingersoll
ENGINEER OF DESIGN AND ENVIRONMENT

May 1, 2009
Christine M. Reed
DIRECTOR OF HIGHWAYS, CHIEF ENGINEER

PRINTED BY THE AUTHORITY
OF THE STATE OF ILLINOIS