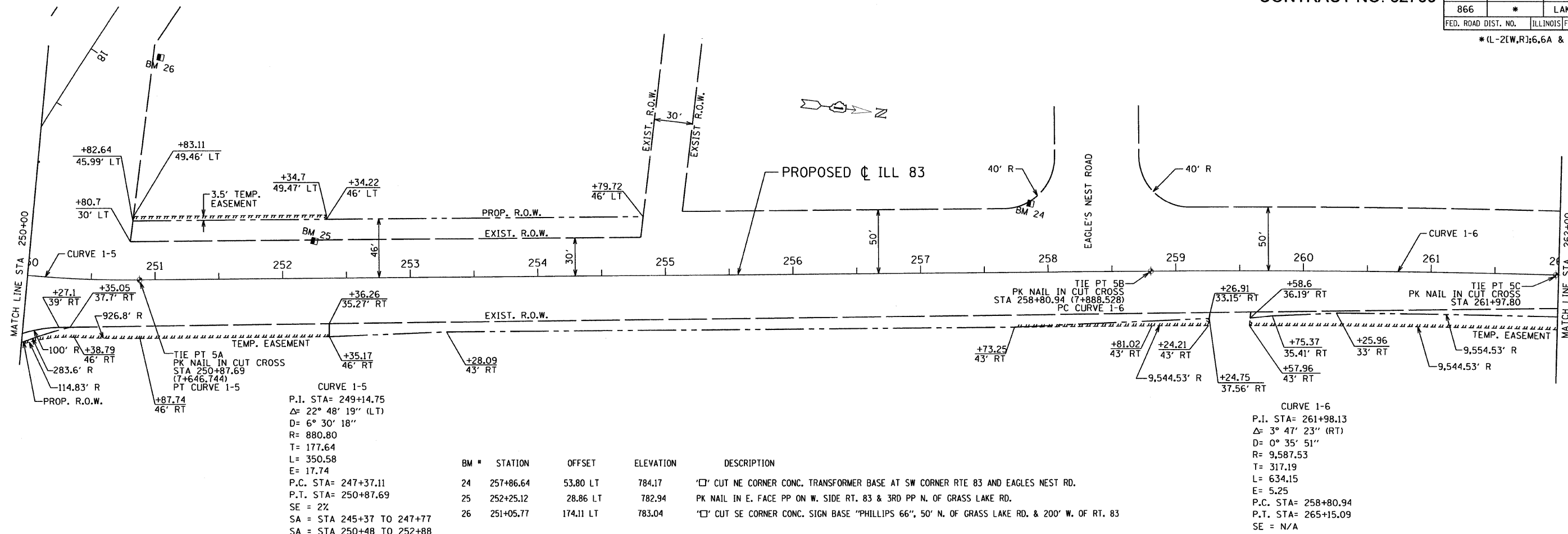


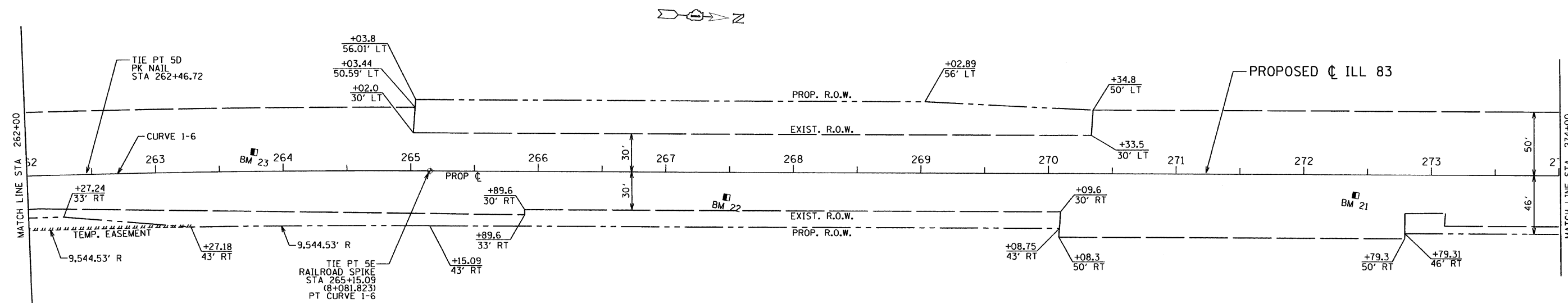
F.A. ROUTE NO.	SECTION	COUNTY	TOTAL SHEETS	SHEET NO.
866	*	LAKE	554	37
FED. ROAD DIST. NO.		ILLINOIS FED. AID PROJECT		
*(L-2(W,R);6,6A & 6 EXT) WRS-1				



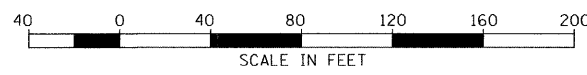
CURVE 1-5
 P.I. STA= 249+14.75
 Δ = 22° 48' 19" (LT)
 D= 6° 30' 18"
 R= 880.80
 T= 177.64
 L= 350.58
 E= 17.74
 P.C. STA= 247+37.11
 P.T. STA= 250+87.69
 SE = 2%
 SA = STA 245+37 TO 247+77
 SA = STA 250+48 TO 252+88

CURVE 1-6
 P.I. STA= 261+98.13
 Δ = 3° 47' 23" (RT)
 D= 0° 35' 51"
 R= 9,587.53
 T= 317.19
 L= 634.15
 E= 5.25
 P.C. STA= 258+80.94
 P.T. STA= 265+15.09
 SE = N/A

BM #	STATION	OFFSET	ELEVATION	DESCRIPTION
24	257+86.64	53.80 LT	784.17	'C' CUT NE CORNER CONC. TRANSFORMER BASE AT SW CORNER RTE 83 AND EAGLES NEST RD.
25	252+25.12	28.86 LT	782.94	PK NAIL IN E. FACE PP ON W. SIDE RT. 83 & 3RD PP N. OF GRASS LAKE RD.
26	251+05.77	174.11 LT	783.04	'C' CUT SE CORNER CONC. SIGN BASE "PHILLIPS 66", 50' N. OF GRASS LAKE RD. & 200' W. OF RT. 83



BM #	STATION	OFFSET	ELEVATION	DESCRIPTION
21	272+40.70	16.27 RT	783.85	PK NAIL 5' E. OF EP IN BITUM. DRIVE #40523
22	267+47.73	19.72 RT	789.10	'C' CUT TOP CONC. HEADWALL ON E. SIDE RTE 83 ACROSS STREET FROM #40470
23	263+77.48	15.18 LT	780.97	'C' CUT TOP CONC. HEADWALL OF 3' BOX CULVERT ON W. SIDE RTE 83, APPROX. 500 FT N. OF EAGLES NEST RD.



REVISIONS		ILLINOIS DEPARTMENT OF TRANSPORTATION FROM THE WISCONSIN STATE LINE TO NORTH OF PETITE LAKE ROAD ALIGNMENT & TIE PLAN STA 250+00 TO STA 274+00 DATE: 1/30/09 DRAWN BY: BR CHECKED BY: MW
NAME	DATE	

GRAEF, ANHALT, SCHLOEMER & ASSOCIATES, INC.
 CHICAGO, ILLINOIS

G:\2004\024.N.ms\plan\set\val\file05.dgn 1/26/2009 8:35:13 AM