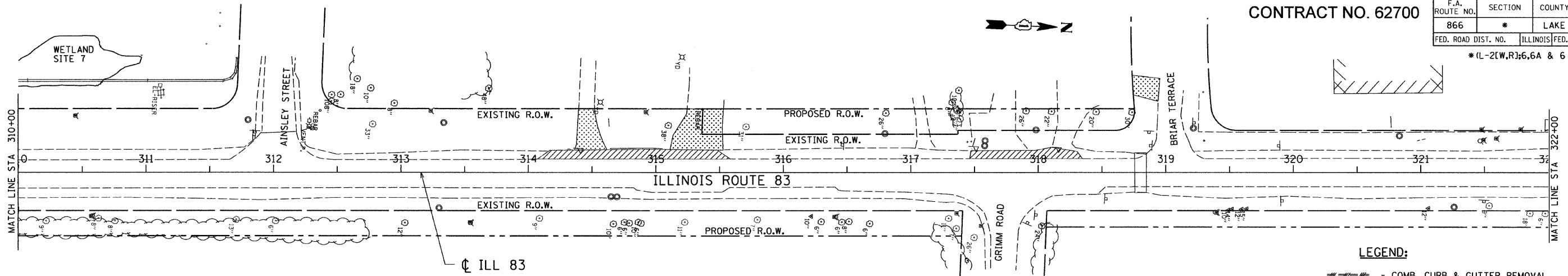


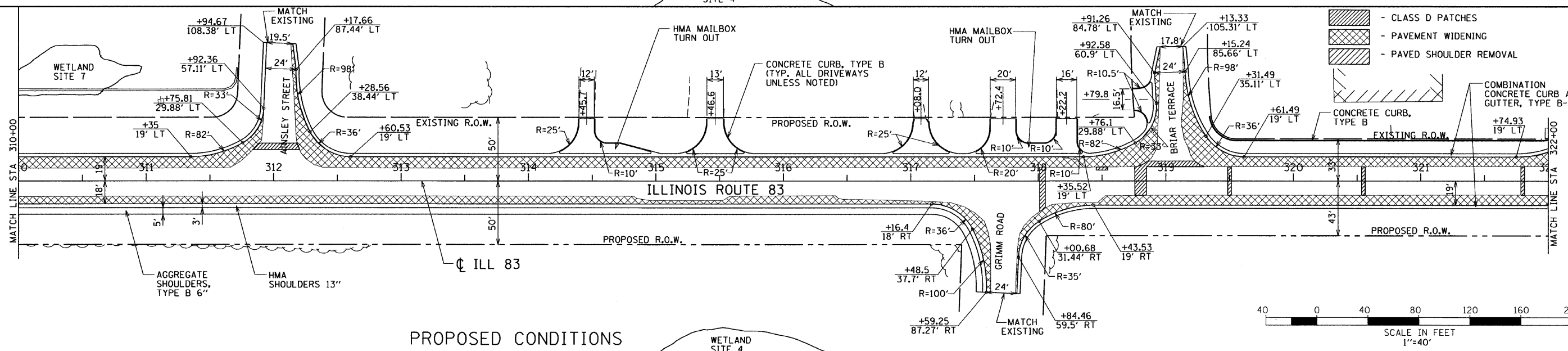
CONTRACT NO. 62700

F.A. ROUTE NO.	SECTION	COUNTY	TOTAL SHEETS	SHEET NO.
866	*	LAKE	554	64
FED. ROAD DIST. NO.		ILLINOIS FED. AID PROJECT		
*(L-2(W,R);6,6A & 6 EXT) WRS-1				

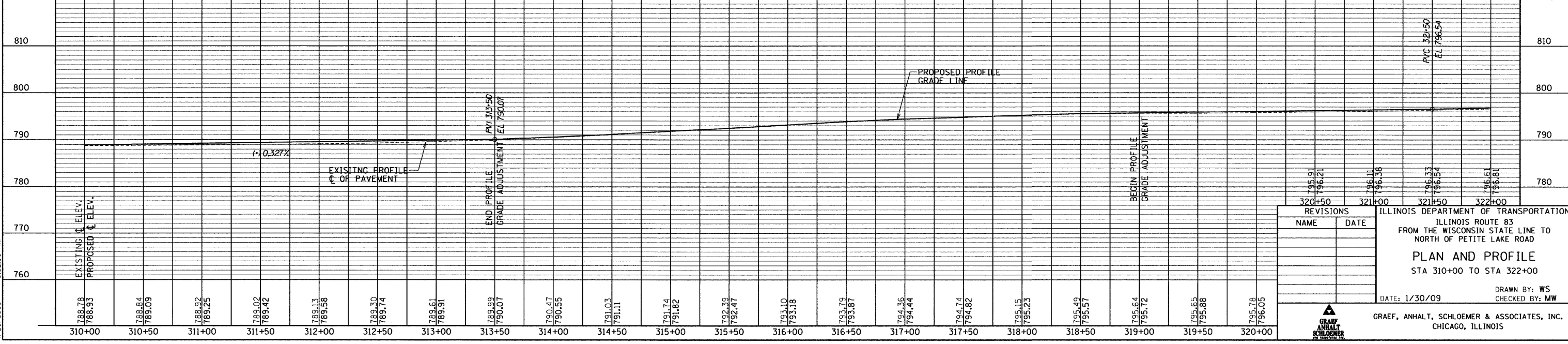
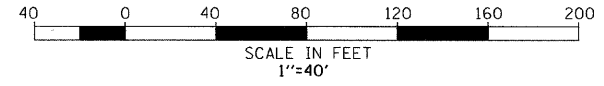


EXISTING CONDITIONS

- LEGEND:**
- COMB. CURB & GUTTER REMOVAL
  - DRIVEWAY PAVEMENT REMOVAL
  - PAVEMENT REMOVAL
  - SIDEWALK REMOVAL
  - CLASS D PATCHES
  - PAVEMENT WIDENING
  - PAVED SHOULDER REMOVAL
  - CONCRETE CURB, TYPE B
  - COMBINATION CONCRETE CURB AND GUTTER, TYPE B-6.24



PROPOSED CONDITIONS



ILLINOIS DEPARTMENT OF TRANSPORTATION  
 FROM THE WISCONSIN STATE LINE TO  
 NORTH OF PETITE LAKE ROAD  
**PLAN AND PROFILE**  
 STA 310+00 TO STA 322+00

DATE: 1/30/09

DRAWN BY: WS  
 CHECKED BY: MW

GRAEF, ANHALT, SCHLOEMER & ASSOCIATES, INC.  
 CHICAGO, ILLINOIS

G:\20004024.N\ms\plan\set\plan14.dgn  
 4/23/2009 9:52:56 AM