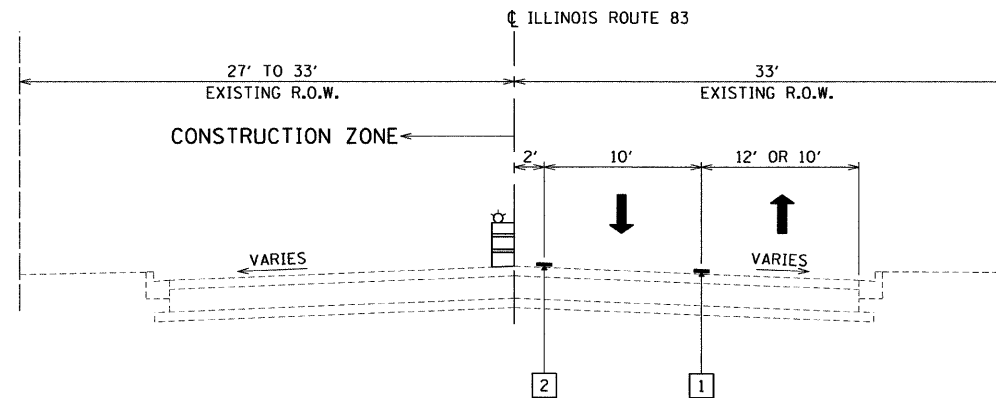


F.A. ROUTE NO.	SECTION	COUNTY	TOTAL SHEETS	SHEET NO.
866	*	LAKE	554	88
FED. ROAD DIST. NO.	ILLINOIS	FED. AID PROJECT		

*(L-2[W,R]6,6A & 6 EXT) WRS-1

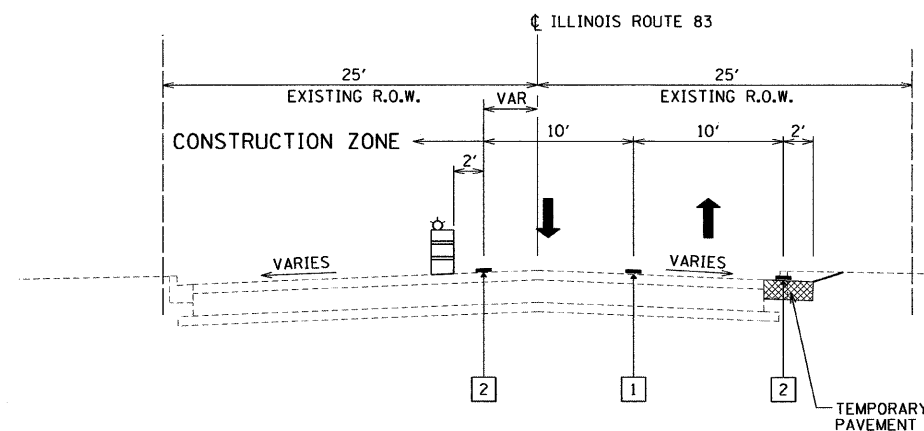
STORM SEWER STAGING



TYPICAL SECTION

ILLINOIS ROUTE 83
STA. 424+00 TO STA. 437+44
(LOOKING NORTH)

STORM SEWER STAGING



TYPICAL SECTION

ILLINOIS ROUTE 83
STA. 437+44 TO STA. 441+35
STA. 457+57 TO STA. 462+00
(LOOKING NORTH)

PARK STREET TO NORTH OF DEPOT STREET
(STORM SEWER CONSTRUCTION)

1. REMOVE EXISTING PAVEMENT MARKINGS. POST TEMPORARY "NO PARKING" SIGNS.
2. PLACE TEMPORARY PAVEMENT MARKINGS AND TEMPORARY BARRICADES. SHIFT TRAFFIC TO EAST SIDE OF STREET.
3. REMOVE EXISTING PAVEMENT REQUIRED FOR STORM SEWER CONSTRUCTION.
4. CONSTRUCT STORM SEWER.
5. PATCH PAVEMENT.
6. RESTORE PAVEMENT MARKINGS AND REOPEN STREET TO TRAFFIC.

FIRST STREET TO NORTH AVENUE
(STORM SEWER CONSTRUCTION)

1. REMOVE CONFLICTING CURB AND GUTTER AND CONSTRUCT TEMPORARY PAVEMENT. REMOVE CONFLICTING PAVEMENT MARKINGS.
2. PLACE TEMPORARY PAVEMENT MARKINGS AND TEMPORARY BARRICADES. SHIFT TRAFFIC TO EAST SIDE OF STREET.
3. REMOVE EXISTING PAVEMENT REQUIRED FOR STORM SEWER CONSTRUCTION.
4. CONSTRUCT STORM SEWER.
5. PATCH PAVEMENT.
6. RESTORE PAVEMENT MARKINGS AND REOPEN STREET TO TRAFFIC.

GRASS LAKE ROAD

STAGE I

1. CONSTRUCT TEMPORARY PAVEMENT ON THE NORTH SIDE OF GRASS LAKE ROAD.
2. REMOVE CONFLICTING PAVEMENT MARKINGS AND PLACE TEMPORARY PAVEMENT MARKINGS. COORDINATE WORK WITH THE RAILROAD AT ITS CROSSING. SHIFT TRAFFIC TO STAGE I CONFIGURATION.
3. CONSTRUCT IMPROVEMENTS ON THE SOUTH SIDE OF GRASS LAKE ROAD THROUGH PLACEMENT OF LEVELING BINDER OR BINDER COURSE. COORDINATE WITH THE RAILROAD FOR WORK ON THE EXISTING AND NEW CROSSINGS. DO NOT CONSTRUCT CURB AND GUTTER THROUGH STATION 17+00. DO NOT CONSTRUCT NEW MEDIAN EAST OF IL RTE. 83.
4. CONSTRUCT TEMPORARY PAVEMENTS THROUGH STATION 17+00.
5. REMOVE CONFLICTING PAVEMENT MARKINGS AND PLACE STAGE II PAVEMENT MARKINGS.

STAGE II

1. SHIFT TRAFFIC TO STAGE II CONFIGURATION. COORDINATE WORK WITH THE RAILROAD AT ITS CROSSING.
2. CONSTRUCT IMPROVEMENTS ON THE NORTH SIDE OF GRASS LAKE ROAD THROUGH PLACEMENT OF LEVELING BINDER OR BINDER COURSE. COORDINATE WITH THE RAILROAD FOR WORK ON THE EXISTING AND NEW CROSSINGS.
3. UPON COMPLETION OF PAVEMENT WEST OF IL RTE. 83, REMOVE TEMPORARY PAVEMENT AND CONSTRUCT CURB AND GUTTER THROUGH STATION 17+00. PLACE HOT-MIX ASPHALT SURFACE COURSE WEST OF IL RTE. 83.
4. PLACE FINAL PAVEMENT MARKINGS WEST OF IL RTE. 83.

STAGE III

1. REMOVE CONFLICTING PAVEMENT MARKINGS, PLACE STAGE III TEMPORARY PAVEMENT MARKING AND SHIFT TRAFFIC TO STAGE III CONFIGURATION. COORDINATE WORK WITH THE RAILROAD AT ITS CROSSING.
2. CONSTRUCT MEDIANS EAST OF IL RTE. 83.
3. PLACE HOT-MIX ASPHALT SURFACE COURSE EAST OF IL RTE. 83.
4. PLACE FINAL PAVEMENT MARKINGS.

PAVEMENT MARKING AND PAVEMENT MARKERS

- 1 4 INCH DOUBLE YELLOW CENTERLINE
- 2 4 INCH WHITE EDGE LINE
- 3 4 INCH YELLOW EDGE LINE
- 4 24 INCH WHITE STOP BAR
- 5 TEMP. REFL. PVMT. MARKERS, 2 WAY AMBER, 40 FEET O/C

REVISIONS		ILLINOIS DEPARTMENT OF TRANSPORTATION ILLINOIS ROUTE 83 FROM THE WISCONSIN STATE LINE TO NORTH OF PETITE LAKE ROAD SUGGESTED CONSTRUCTION STAGING TYPICAL SECTIONS DRAWN BY: EUB CHECKED BY: MW DATE: 1/30/09
NAME	DATE	



GRAEF, ANHALT, SCHLOEMER & ASSOCIATES, INC.
CHICAGO, ILLINOIS