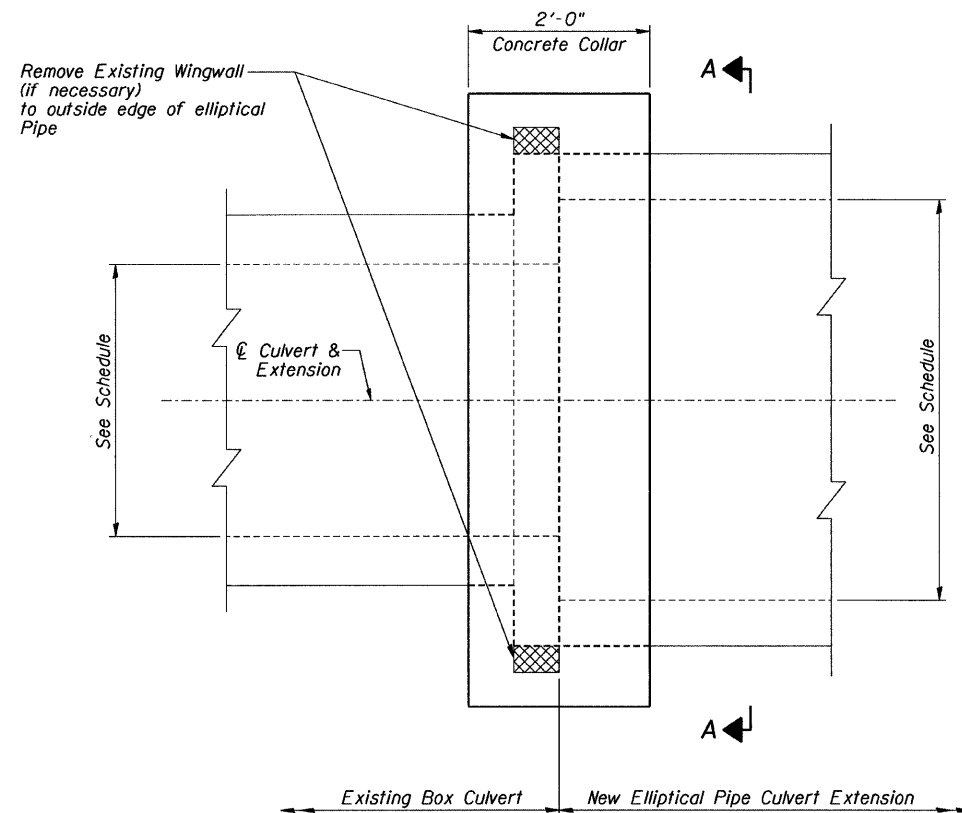
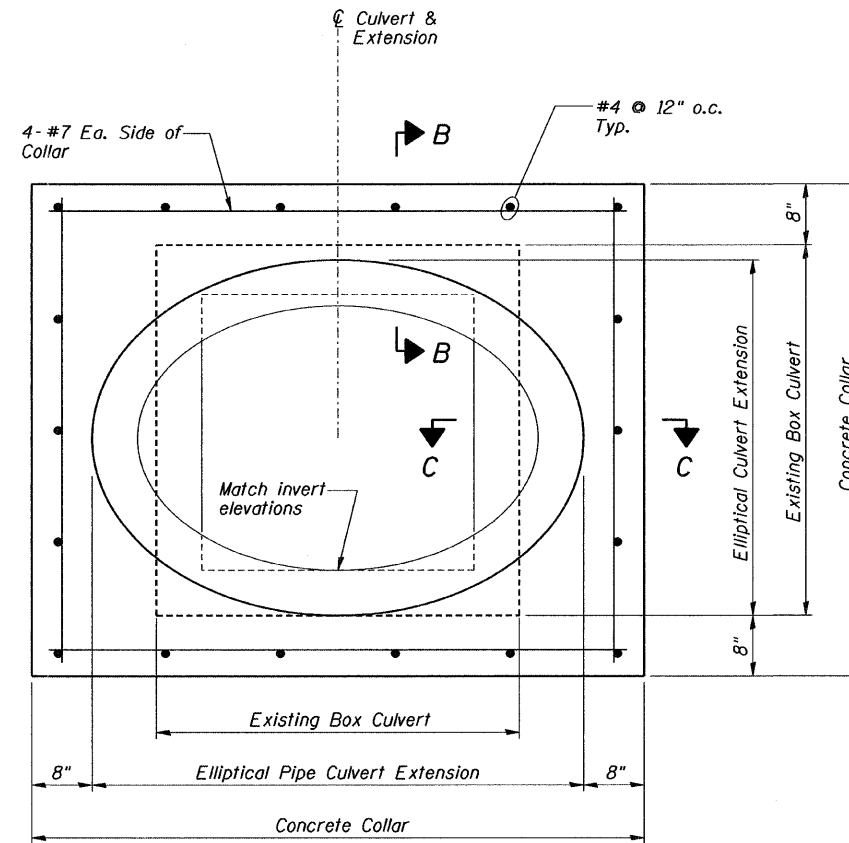


F.A. ROUTE NO.	SECTION	COUNTY	TOTAL SHEETS	SHEET NO.
866	*	LAKE	554	130
FED. ROAD DIST. NO.		ILLINOIS	FED. AID PROJECT	
*(L-2(W,R);6,6A & 6 EXT) WRS-1				



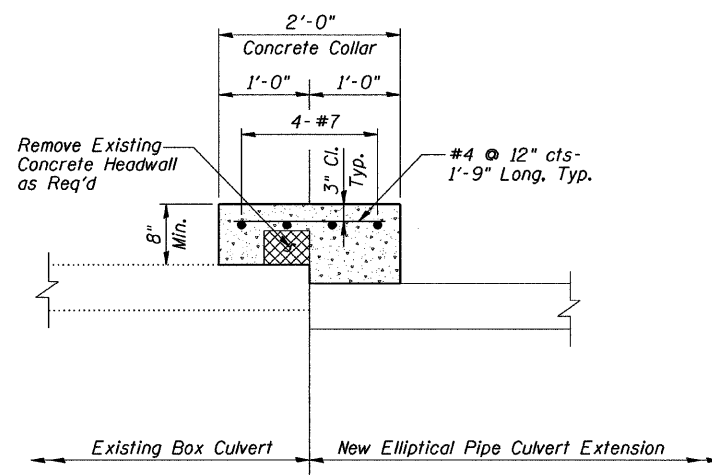
TYPICAL CONCRETE COLLAR PLAN



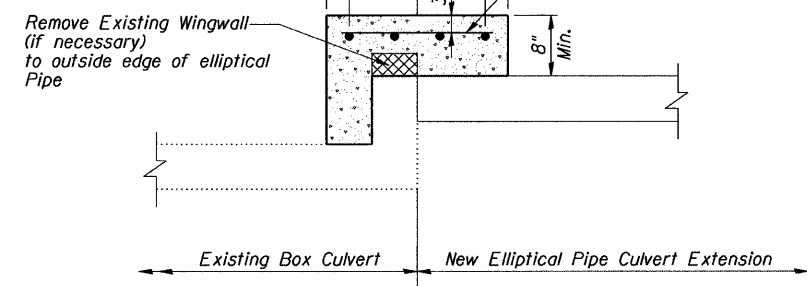
SECTION A-A

CULVERT EXTENSION SCHEDULE

STATION	EXISTING BOX CULVERT INSIDE DIMENSIONS (HEIGHT x WIDTH)	NEW ELLIPTICAL PIPE CULVERT EXTENSION INSIDE DIMENSIONS (HEIGHT x WIDTH)	QUANTITY OF CONCRETE COLLAR (CU. YD.)
216+27.68 RT & LT	36" x 48"	38" x 60"	2 @ 1.5 = 3.0
231+54.92 RT & LT	36" x 48"	38" x 60"	2 @ 1.5 = 3.0
263+79.65 RT & LT	36" x 36"	34" x 53"	2 @ 1.5 = 3.0
276+69.68 RT & LT	30" x 60"	38" x 60"	2 @ 1.5 = 3.0
297+29.73 RT	24" x 24"	24" x 38"	2 @ 1.1 = 2.2
		TOTAL QUANTITY	14.2



SECTION B-B



SECTION C-C

DESIGNED	JAZ
CHECKED	RJS
DRAWN	EB
CHECKED	JAZ

Notes:

- Cost of Reinforcement Bars and Removal of Existing Headwall and Wingwall Concrete shall be included in the unit price for "Concrete Collar"

CULVERT EXTENSION DETAILS

F.A.P. ROUTE 866
LAKE COUNTY

DATE: 1/30/09

GRAEF, ANHALT, SCHLOEMER & ASSOCIATES INC
CHICAGO, ILLINOIS