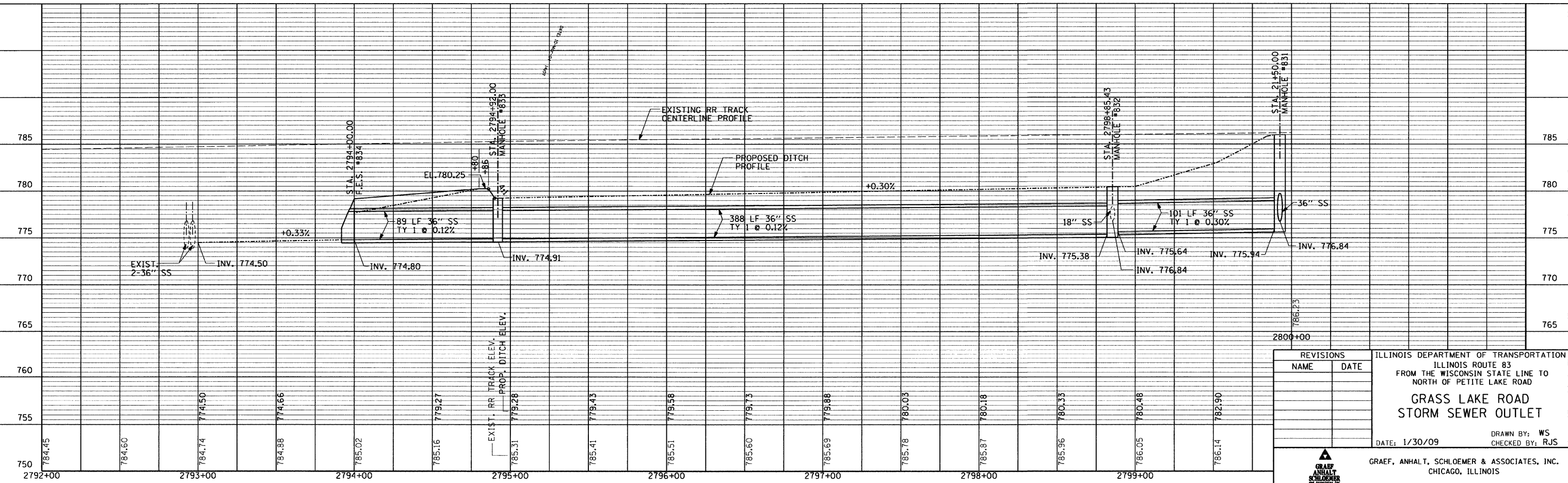
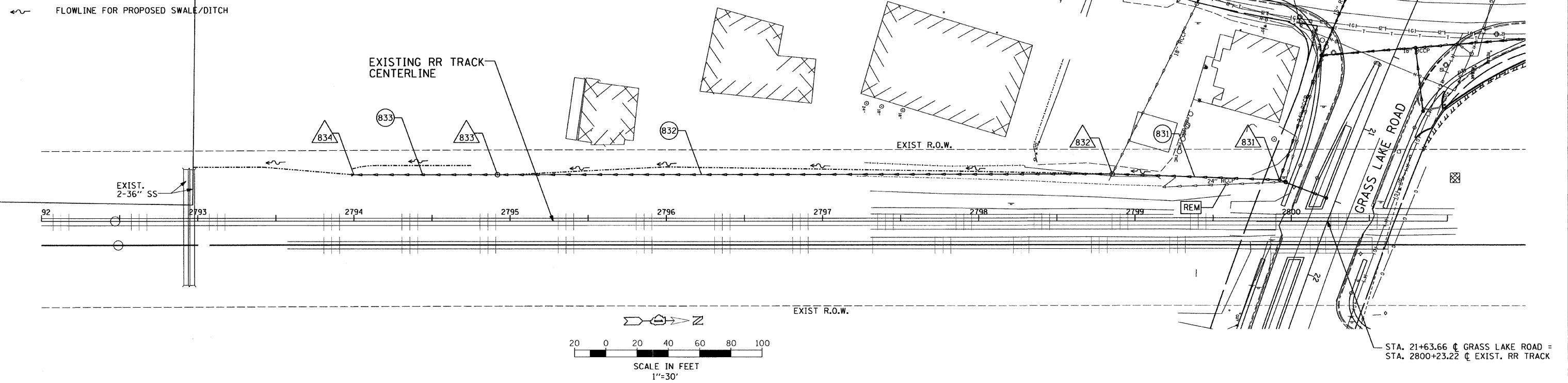


CONTRACT NO. 62700

F.A. ROUTE NO.	SECTION	COUNTY	TOTAL SHEETS	SHEET NO.
866	*	LAKE	554	170
FED. ROAD DIST. NO.	ILLINOIS	FED. AID PROJECT		
		*(L-2(W,R);6,6A & 6 EXT) WRS-1		

- LEGEND:**
- PROPOSED STRUCTURE
 - PROPOSED STORM SEWER
 - UTILITY ITEM TO BE REMOVED
 - FLOWLINE FOR PROPOSED SWALE/DITCH



REVISIONS	
NAME	DATE

ILLINOIS DEPARTMENT OF TRANSPORTATION
ILLINOIS ROUTE 83
FROM THE WISCONSIN STATE LINE TO
NORTH OF PETITE LAKE ROAD

**GRASS LAKE ROAD
STORM SEWER OUTLET**

DATE: 1/30/09

DRAWN BY: WS
CHECKED BY: RJS

GRAEF, ANHALT, SCHLOEMER & ASSOCIATES, INC.
CHICAGO, ILLINOIS

G:\20004024_M\ms\plan\30duplan\GrassLakeRR.dgn 2/26/2009 7:53:43 AM