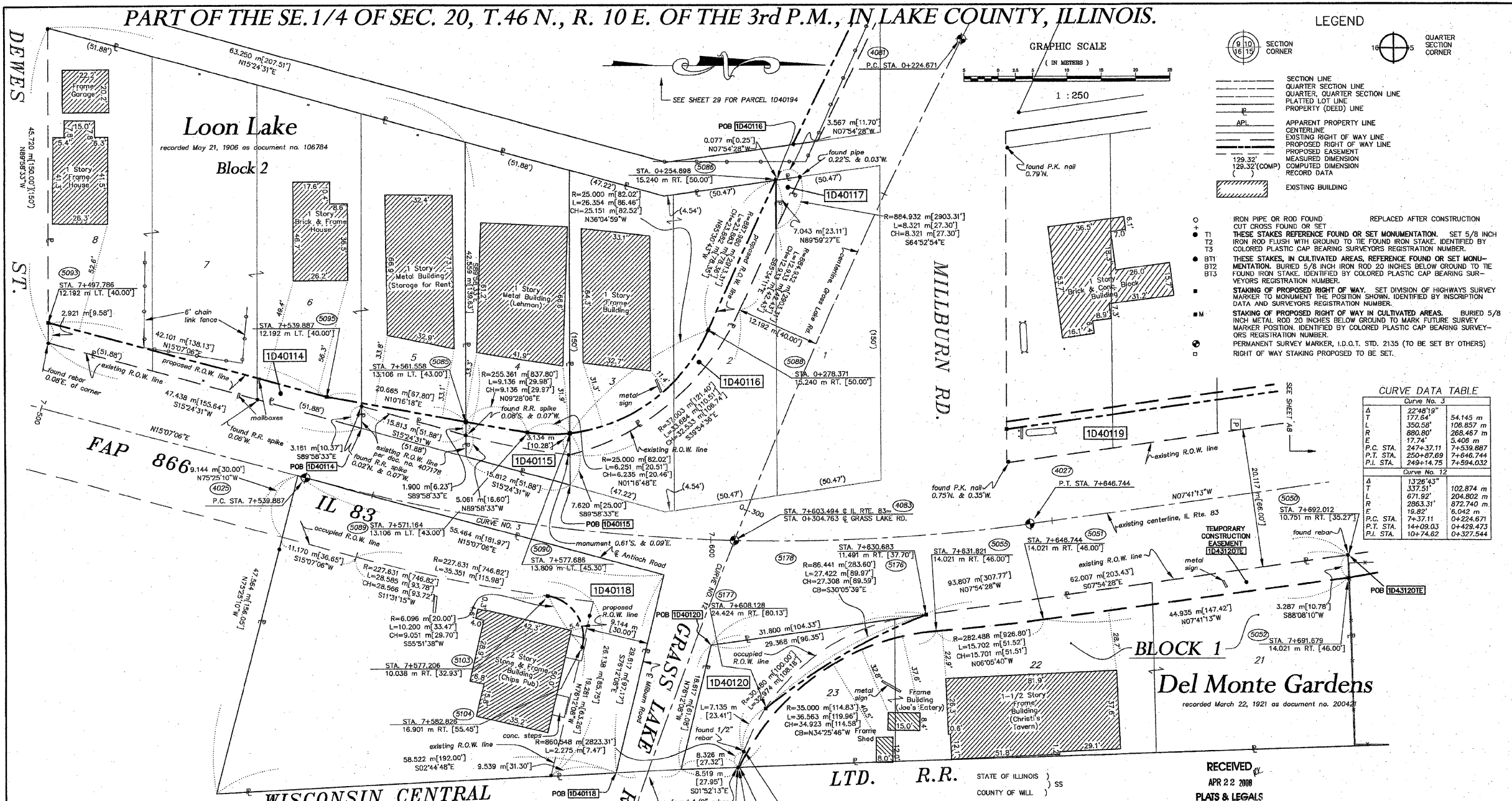


F.A. ROUTE NO.	SECTION	COUNTY	TOTAL SHEETS	SHEET NO.
866	*	LAKE	554	174
FED. ROAD DIST. NO.		ILLINOIS FED. AID PROJECT		
*(L-2[W.R.]6,6A & 6 EXT) WRS-1				

PART OF THE SE. 1/4 OF SEC. 20, T.46 N., R. 10 E. OF THE 3rd P.M., IN LAKE COUNTY, ILLINOIS.



CURVE DATA TABLE

Curve No.	Δ	T	L	R	P.C. STA.	P.T. STA.	P.I. STA.
Curve No. 3	224°19'	177.64'	54.145 m	350.58'	247+37.11	250+87.89	249+14.75
Curve No. 12	132°43'	337.51'	102.874 m	671.92'	7+37.11	14+09.03	10+49.03

PARCEL NO.	OWNER	TOTAL HOLDING ACRES	PART TAKEN ACRES	REMAINDER ACRES	PREV. DED. ACRES	EASEMENT ACRES	EASEMENT PURPOSE	PERMANENT TAX INDEX NUMBER	PROPERTY ACQUIRED BY
1D40114	BERND A. JUNG	0.677	0.039	0.638	N/A	N/A	N/A	02-20-408-005	
1D40115	STATE BANK OF THE LAKES F/K/A STATE BANK OF ANTIOCH TRUST NO. 90-114	0.172	0.023	0.149	0.014	N/A	GRADING	02-20-408-004	
1D40116	STATE BANK OF THE LAKES F/K/A STATE BANK OF ANTIOCH TRUST NO. 98-111	0.212	0.031	0.181	N/A	N/A	N/A	02-20-408-001	
1D40117	WILLIAM KELLER	0.003	0.003	0.000	N/A	N/A	N/A	02-20-408-002	
1D40118	CHARLES J. ARMSTRONG, AS TRUSTEE	0.531	0.170	0.361	0.167	N/A	N/A	02-20-400-016	
1D40120	STATE BANK OF ANTIOCH TRUST NO. 88-108	0.538	0.066	0.472	0.057	N/A	N/A	02-20-401-019	
1D43120	JAMES B. KELLER	0.472	N/A	0.472	N/A	GRADING		02-20-401-048	

- NOTES:
- COORDINATES SHOWN ARE ILLINOIS STATE PLANE COORDINATES, EAST ZONE, NAD 83, IN METERS, ADJUSTED TO REPRESENT GROUND COORDINATES. MULTIPLY GROUND COORDINATES BY SCALE FACTOR OF 0.99995413 TO OBTAIN STATE PLANE GRID VALUES.
 - BASIS OF BEARINGS IS THE ILLINOIS STATE PLANE COORDINATE SYSTEM, EAST ZONE, NAD 83.
 - SEE SHEETS A30-A36 FOR COORDINATES AND REFERENCE TIES.
 - SHEET 1 IS A COVER SHEET AND IS NOT RECORDED.

THIS IS TO CERTIFY THAT RUETTIGER, TONELLI & ASSOCIATES, INC., AN ILLINOIS DESIGN FIRM, HAS SURVEYED THE PLAT OF HIGHWAYS SHOWN HEREON IN SECTION 20, TOWNSHIP 46 NORTH, RANGE 10 EAST OF THE THIRD PRINCIPAL MERIDIAN, LAKE COUNTY, THAT THE SURVEY IS TRUE AND COMPLETE AS SHOWN TO THE BEST OF MY KNOWLEDGE AND BELIEF, THAT THE PLAT CORRECTLY REPRESENTS SAID SURVEY, THAT ALL MONUMENTS FOUND AND ESTABLISHED ARE OF PERMANENT QUALITY AND OCCUPY THE POSITIONS SHOWN THEREON AND THAT THE MONUMENTS ARE SUFFICIENT TO ENABLE THE SURVEY TO BE RETRACED. MADE FOR THE DEPARTMENT OF TRANSPORTATION, STATE OF ILLINOIS.

DATED AT JULIET, ILLINOIS THIS 22ND DAY OF APRIL 2008 A.D.

Ronald F. Hodgen
 RONALD F. HODGEN P.L.S. NO. 2830
 MY LICENSE EXPIRES NOVEMBER 30, 2008

RECEIVED
 APR 22 2008
 PLATS & LEGALS

RUETTIGER, TONELLI & ASSOCIATES, INC.
 Land Surveyors/Engineers/Planners/Landscape Architects/C.L.S. Consultants
 2124 OGDEN STREET
 JOLIET, ILLINOIS 62450
 PH: (815) 741-2000 FAX: (815) 741-0101

PLAT OF HIGHWAYS
 STATE OF ILLINOIS
 DEPARTMENT OF TRANSPORTATION
 FAP 866 IL 83

SECTION 20 LAKE COUNTY
 PROJECT JOB NO. R91-048-95
 STATION 7+500 TO STATION 7+700
 SCALE: 1:250 SHEET A7 OF A36

BUREAU OF LAND ACQUISITION
 201 WEST CENTER COURT
 SCHAUMBURG, ILLINOIS 60196

4-17-08	REVISED OWNER/PIN 3120TE	JMH
REVISION DATE 4-16-08	REVISION REVISED PARCEL 0120 TE TO 3000 SERIES	MADE BY JMH