

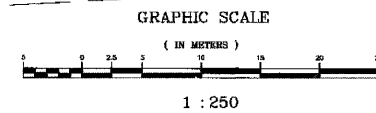
PART OF THE NE.1/4 OF SEC. 20, T.46 N., R. 10 E. OF THE 3rd P.M., IN LAKE COUNTY, ILLINOIS.

Sunny Acres Unit No. 2

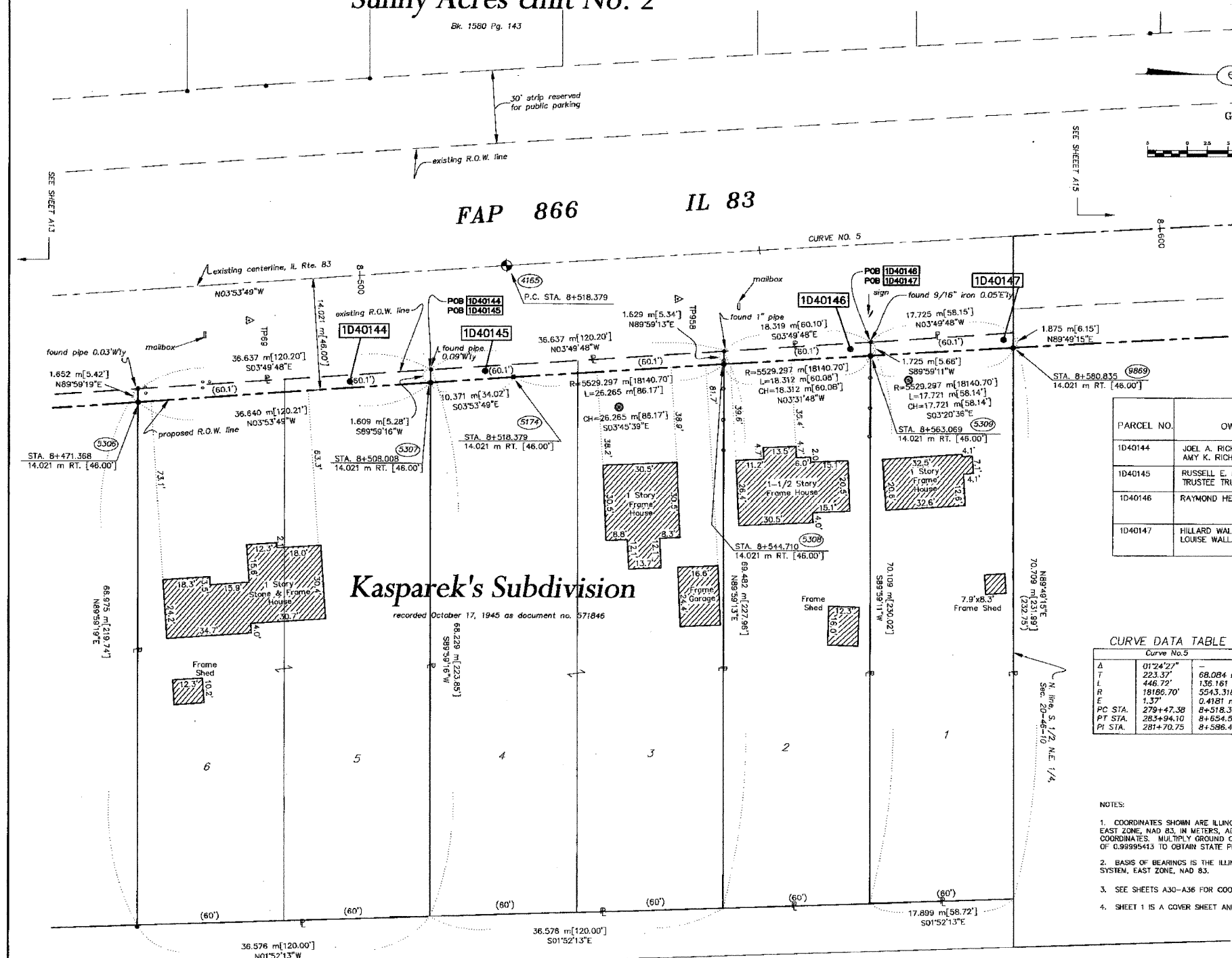
6075949
10/18/2006

LEGEND

- QUARTER SECTION CORNER
- SECTION LINE
- QUARTER SECTION LINE
- PLATTED LOT LINE
- PROPERTY (DEED) LINE
- APPARENT PROPERTY LINE
- CENTERLINE
- EXISTING RIGHT OF WAY LINE
- PROPOSED RIGHT OF WAY LINE
- MEASURED DIMENSION
- COMPUTED DIMENSION
- RECORD DATA
- EXISTING BUILDING



FAP 866 IL 83



PARCEL NO.	OWNER	TOTAL HOLDING ACRES	PART TAKEN ACRES	REMAINDER ACRES	PREV. DEED ACRES	EASEMENT ACRES	EASEMENT PURPOSE	PERMANENT TAX INDEX NUMBER	PROPERTY ACQUIRED BY
1D40144	JOEL A. RICHTER & AMY K. RICHTER	0.611	0.015	0.596	N/A	N/A	N/A	02-20-207-005	
1D40145	RUSSELL E. LASCO, SR. AS TRUSTEE TRUST NO. 421	0.822	0.015	0.607	N/A	N/A	N/A	02-20-207-003	4703715
1D40146	RAYMOND HENRY	0.315	0.008	0.307	N/A	N/A	N/A	02-20-207-002	
1D40147	HILLARD WALLACE & LOUISE WALLACE	0.310	0.008	0.302	N/A	N/A	N/A	02-20-207-001	

CURVE DATA TABLE

Curve No. 5	
A	0124°22' -
T	223.37' 68.084 m
L	446.72' 136.161 m
R	18186.70' 5543.318 m
E	1.37' 0.4181 m
PC STA.	279+47.39 8+518.379
PT STA.	283+94.10 8+654.540
PI STA.	281+70.75 8+586.463

STATE OF ILLINOIS }
COUNTY OF WILL }
THIS IS TO CERTIFY THAT RONALD F. HODGEN, AN ILLINOIS PROFESSIONAL LAND SURVEYOR, HAS SURVEYED THE PLAT OF HIGHWAYS SHOWN HEREON IN SECTION 20, TOWNSHIP 46 NORTH, RANGE 10 EAST OF THE THIRD PRINCIPAL MERIDIAN, LAKE COUNTY, THAT THE SURVEY IS TRUE AND COMPLETE AS SHOWN TO THE BEST OF MY KNOWLEDGE AND BELIEF; THAT THE PLAT CORRECTLY REPRESENTS SAID SURVEY, THAT ALL MONUMENTS FOUND AND ESTABLISHED ARE OF PERMANENT QUALITY AND OCCUPY THE POSITIONS SHOWN THEREON AND THAT THE MONUMENTS ARE SUFFICIENT TO ENABLE THE SURVEY TO BE RETRACED. MADE FOR THE DEPARTMENT OF TRANSPORTATION, STATE OF ILLINOIS.

DATED AT JOLIET, ILLINOIS THIS 13th DAY OF AUGUST, 2002 A.D.
Ronald F. Hodgen
ILLINOIS PROFESSIONAL LAND SURVEYOR NO. 2630

- NOTES:
- COORDINATES SHOWN ARE ILLINOIS STATE PLANE COORDINATES, EAST ZONE, NAD 83, IN METERS, ADJUSTED TO REPRESENT GROUND COORDINATES. MULTIPLY GROUND COORDINATES BY SCALE FACTOR OF 0.99995413 TO OBTAIN STATE PLANE GRID VALUES.
 - BASIS OF BEARINGS IS THE ILLINOIS STATE PLANE COORDINATE SYSTEM, EAST ZONE, NAD 83.
 - SEE SHEETS A30-A36 FOR COORDINATES AND REFERENCE TIES.
 - SHEET 1 IS A COVER SHEET AND IS NOT RECORDED.

RUETTIGER, TONELLI & ASSOCIATES, INC.
Land Surveyors/Engineers/Planners/Landscape Architects/G.I.S. Consultants
5174 CHRYSLER STREET, SUITE 110, NAPERVILLE, ILLINOIS 60563
PH: (630) 244-8800 FAX: (630) 244-0001

PLAT OF HIGHWAYS
STATE OF ILLINOIS
DEPARTMENT OF TRANSPORTATION
FAP 866 IL 83
SECTION LAKE COUNTY
PROJECT JOB NO. R91-048-95
STATION 8+475 TO STATION 8+600
SCALE: 1:250 SHEET A14 OF A36
BUREAU OF LAND ACQUISITION
201 WEST CENTER COURT
SCHAUMBURG, ILLINOIS 60196

REVISION DATE	REVISION	MADE BY

N:\1\m12001\0211\SP14.dwg Tue Aug 13 12:24:04 2002 J.L.W.