

F.A.P. RTE.	SECTION	COUNTY	TOTAL SHEETS	SHEET NO.
866	*	LAKE	554	289
STA.		TO STA.		
FED. ROAD DIST. NO.		ILLINOIS FED. AID PROJECT		
CONTRACT #62700				
* (L-2LW,R); 6.6A & 6EXT1WR5-1				

**CABLE PLAN LEGEND**

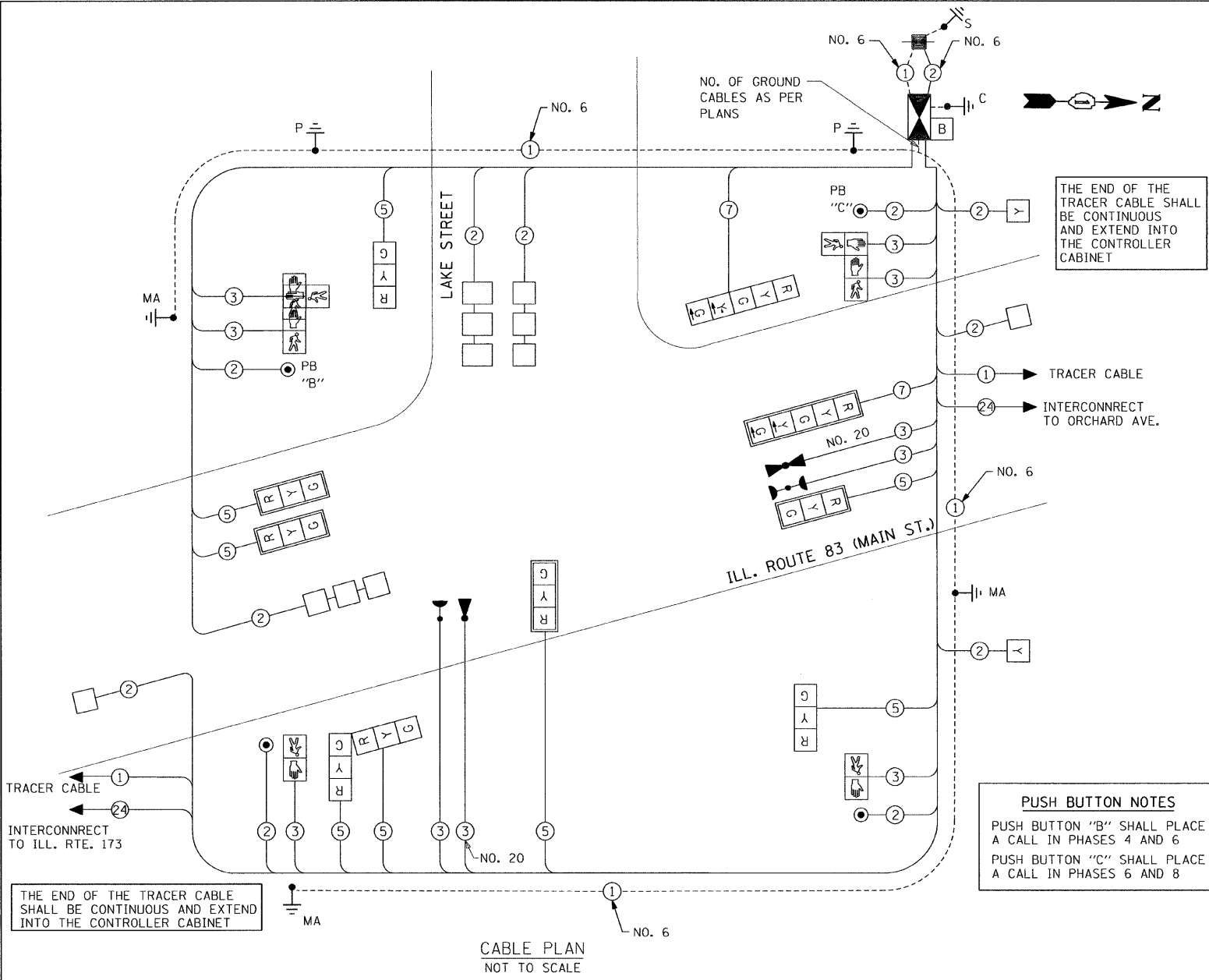
EXISTING	PROPOSED	DESCRIPTION
⊙	⊙	8" (200mm) TRAFFIC SIGNAL SECTION
⊙	⊙	12" (300mm) TRAFFIC SIGNAL SECTION
⊙	⊙	12" (300mm) PEDESTRIAN SIGNAL SECTION
⊙	⊙	12" (300mm) PEDESTRIAN SIGNAL SECTION
⊙	⊙	CONTROLLER CABINET
⊙	⊙	SERVICE INSTALLATION
⊙	⊙	VEHICLE DETECTOR, INDUCTION LOOP
⊙	⊙	TELEPHONE INSTALLATION
⊙	⊙	MAGNETIC DETECTOR
⊙	⊙	EMERGENCY VEHICLE LIGHT DETECTOR
⊙	⊙	CONFIRMATION BEACON
⊙	⊙	PUSHBUTTON DETECTOR
⊙	⊙	⊙ DENOTES NUMBER OF CONDUCTORS, ALL CABLE NO. 14 EXCEPT AS INDICATED. ALL LOOP DETECTOR CABLE TO BE SHIELDED.
⊙	⊙	⊙ GROUND CABLE IN CONDUIT NO. 6 SOLID COPPER (GREEN)
⊙	⊙	⊙ FIBER OPTIC CABLE IN CONDUIT NO. 62.5/125 2-MM12F SM12F
⊙	⊙	⊙ SIGNAL FACE WITH BACK PLATE "P" INDICATES PROGRAMMED HEAD.
⊙	⊙	"P" RAILROAD CONTROL CABINET
⊙	⊙	"E" ILLUMINATED SIGN "NO LEFT TURN"
⊙	⊙	"E" ILLUMINATED SIGN "NO RIGHT TURN"
⊙	⊙	C GROUND ROD AT HANDHOLE (H), DOUBLE HANDHOLE (H), OR CONTROLLER (C)
⊙	⊙	P GROUND ROD AT POST (P) OR MAST ARM POLE (MA)
⊙	⊙	S GROUND ROD AT ELECTRIC SERVICE INSTALLATION
⊙	⊙	B UN-INTERRUPTIBLE POWER SUPPLY (UPS)

**SCHEDULE OF QUANTITIES**

PAY ITEM	UNITS	TOTAL
SIGN PANEL - TYPE 1	SQ FT	24.5
SIGN PANEL - TYPE 2	SQ FT	12.5
CONDUIT IN TRENCH, 2" DIA., GALVANIZED STEEL	FOOT	540
CONDUIT IN TRENCH, 2 1/2" DIA., GALVANIZED STEEL	FOOT	140
CONDUIT IN TRENCH, 4" DIA., GALVANIZED STEEL	FOOT	45
CONDUIT PUSHED, 2" DIA., GALVANIZED STEEL	FOOT	175
CONDUIT PUSHED, 4" DIA., GALVANIZED STEEL	FOOT	140
HANDHOLE	EACH	6
HEAVY-DUTY HANDHOLE	EACH	2
DOUBLE HANDHOLE	EACH	1
TRENCH AND BACKFILL FOR ELECTRICAL WORK	FOOT	900
FULL-ACTUATED CONTROLLER AND TYPE IV CABINET	EACH	1
TRANSCEIVER - FIBER OPTIC	EACH	1
ELECTRIC CABLE IN CONDUIT, SIGNAL NO. 14 2C	FOOT	738
ELECTRIC CABLE IN CONDUIT, SIGNAL NO. 14 3C	FOOT	1435
ELECTRIC CABLE IN CONDUIT, SIGNAL NO. 14 5C	FOOT	1625
ELECTRIC CABLE IN CONDUIT, SIGNAL NO. 14 7C	FOOT	265
ELECTRIC CABLE IN CONDUIT, LEAD-IN, NO. 14 1 PAIR	FOOT	1165
ELECTRIC CABLE IN CONDUIT, SERVICE, NO. 6 2 C	FOOT	200
TRAFFIC SIGNAL POST, GALVANIZED STEEL 14 FT.	EACH	1
TRAFFIC SIGNAL POST, GALVANIZED STEEL 16 FT.	EACH	1
STEEL MAST ARM ASSEMBLY AND POLE, 18 FT.	EACH	1
STEEL MAST ARM ASSEMBLY AND POLE, 28 FT.	EACH	1
STEEL MAST ARM ASSEMBLY AND POLE, 34 FT.	EACH	1
CONCRETE FOUNDATION, TYPE A	FOOT	8
CONCRETE FOUNDATION, TYPE D	FOOT	4
CONCRETE FOUNDATION, TYPE E, 30-INCH DIAMETER	FOOT	33.5
TRAFFIC SIGNAL BACKPLATE, LOUVERED, ALUMINUM	EACH	5
INDUCTIVE LOOP DETECTOR	EACH	5
DETECTOR LOOP, TYPE I	FOOT	320
LIGHT DETECTOR	EACH	2
LIGHT DETECTOR AMPLIFIER	EACH	1
PEDESTRIAN PUSH-BUTTON	EACH	4
TEMPORARY TRAFFIC SIGNAL INSTALLATION	EACH	1
REMOVE EXISTING TRAFFIC SIGNAL EQUIPMENT	EACH	1
REMOVE EXISTING HANDHOLE	EACH	7
REMOVE EXISTING CONCRETE FOUNDATION	EACH	8
POST MOUNTED FLASHING BEACON INSTALLATION (SPECIAL)	EACH	2
SERVICE INSTALLATION, POLE MOUNT	EACH	1
ELECTRIC CABLE IN CONDUIT, GROUNDING, NO. 6 1C	FOOT	525
ELECTRIC CABLE IN CONDUIT NO. 20 3/C, TWISTED, SHIELDED	FOOT	475
SIGNAL HEAD, LED, 1-FACE, 3-SECTION, MAST ARM MOUNTED	EACH	4
SIGNAL HEAD, LED, 1-FACE, 3-SECTION, BRACKET MOUNTED	EACH	2
SIGNAL HEAD, LED, 1-FACE, 5-SECTION, BRACKET MOUNTED	EACH	1
SIGNAL HEAD, LED, 1-FACE, 5-SECTION, MAST ARM MOUNTED	EACH	1
SIGNAL HEAD, LED, 2-FACE, 3 SECTION, BRACKET MOUNTED	EACH	1
PEDESTRIAN SIGNAL HEAD, LED, 1-FACE, BRACKET MOUNTED	EACH	2
PEDESTRIAN SIGNAL HEAD, LED, 2-FACE, BRACKET MOUNTED	EACH	2
TEMPORARY TRAFFIC SIGNAL TIMINGS	EACH	1
UNINTERRUPTIBLE POWER SUPPLY	EACH	1

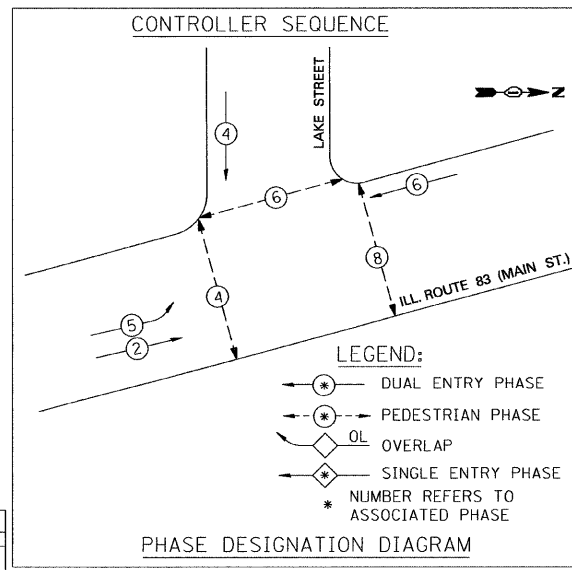
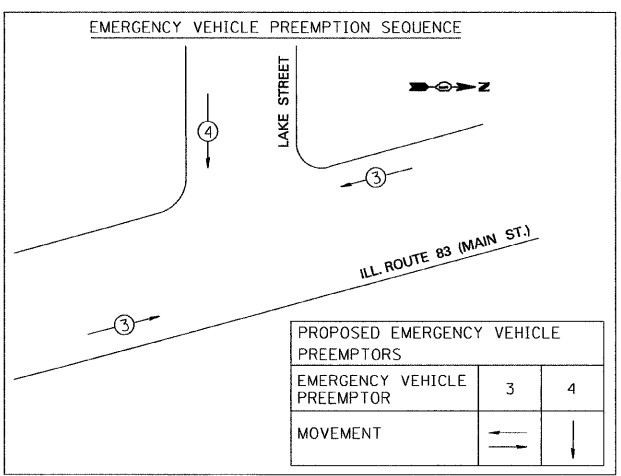
100% COST TO THE VILLAGE OF ANTIOCH

NOTE: EQUIPMENT GROUND CONDUCTOR (GREEN COLOR CODED) SPLICE TO FRAME AND COVER IS REQUIRED FOR ALL HANDHOLES AND DOUBLE HANDHOLES THAT CARRY SIGNAL CABLES AND SERVICE CABLES.



**PUSH BUTTON NOTES**  
 PUSH BUTTON "B" SHALL PLACE A CALL IN PHASES 4 AND 6  
 PUSH BUTTON "C" SHALL PLACE A CALL IN PHASES 6 AND 8

CABLE PLAN NOT TO SCALE



TYPE	NO. LAMPS	WATTAGE (INCAND)	WATTAGE (LED)	% OPERATION	TOTAL WATTAGE
SIGNAL (RED)	10	135	17	0.50	85.0
(YELLOW)	10	135	25	0.25	62.5
(GREEN)	10	135	15	0.25	37.5
ARROW	4	135	12	0.10	4.8
PED. SIGNAL	4	90	25	1.00	100.0
CONTROLLER	1	100	100	1.00	100.0
ILLUM. SIGN		84	35	0.05	
FLASHER		135	25	0.50	
<b>TOTAL =</b>					<b>389.8</b>

FOUNDATION (DEPTH)	(FT.) (m)	CABLE SLACK (FT.) (m)	CABLE SLACK (FT.) (m)
TYPE A - POST	4 (1.2)	HANDHOLE 6.5 (2.0)	ALL FOUNDATIONS 3.5 (1.0)
D - CONTROLLER	4 (1.2)	DOUBLE HANDHOLE 13 (4.0)	MAST ARM (L) POLE 20'-H-2' (6m-H-0.6m)±
E - M. ARM POLE	10 (3.0)	SIGNAL POST 2 (0.5)	BRACKET MOUNTED 13 (4.0)
24" (600mm)	10 (3.0)	CONTROLLER CAB. 1 (0.5)	PED. PUSHBUTTON 4 (1.2)
30" (750mm)	15 (4.6)	FIBER OPTIC 13 (4.0)	ELECTRIC SERVICE 13.5 (4.1)
		ELECTRIC SERVICE 1 (0.5)	SERVICE TO GROUND 13.5 (4.1)
		GROUND CABLE 1 (0.5)	POST MOUNTED 6 (1.8)

ENERGY COST TO: Illinois Department of Transportation  
 Division of Highways / District 1  
 201 W Center Court/Schaumburg, Illinois 60196-1096  
 ENERGY SUPPLY: CONTACT: Mr. Amador Velaz  
 PHONE: 847-816-5248  
 COMPANY: ComEd

**GRAEF ANHALT SCHLOEMER & ASSOCIATES, INC.**  
 CHICAGO, ILLINOIS  
 773 399-0112

REVISIONS		ILLINOIS DEPARTMENT OF TRANSPORTATION
NAME	DATE	
		CABLE PLAN, PHASE DESIGNATION DIAGRAM EMERGENCY VEHICLE PREEMPTION SEQUENCE AND SCHEDULE OF QUANTITIES ILL. ROUTE 83 (MAIN ST.) AND LAKE ST.

SCALE: NONE  
 DATE: 1/30/09  
 DRAWN BY: RV  
 DESIGNED BY: RS  
 CHECKED BY: AZ

G:\2008\0824\_N\File Transfer\In\KAM7-9-08\Contract BATS-23.sht 1/27/2009