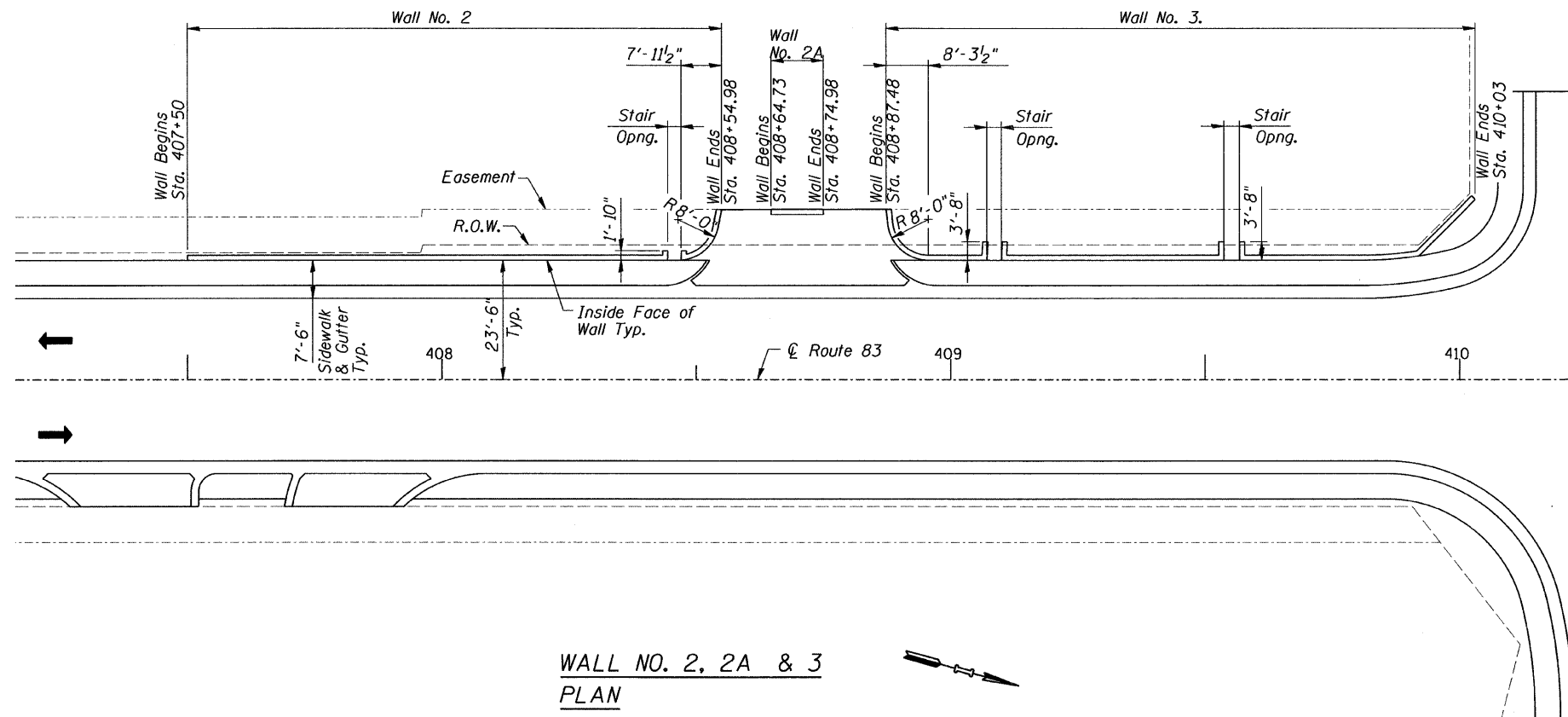
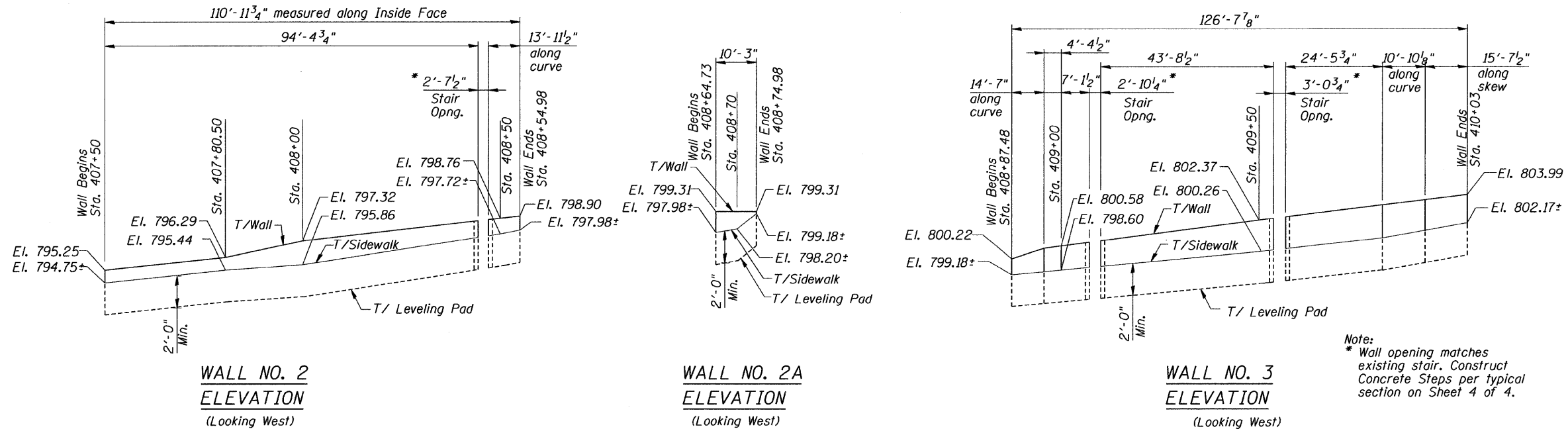


B.M. #6 = "X" cut, Southeast flange bolt of Fire Hydrant at Northeast corner of Route 83 and Chestnut St. Station 410+75.79, 33.85' Rt., Elev. 803.01

CONTRACT NO. 62700

|                       |          |                   |              |           |                |
|-----------------------|----------|-------------------|--------------|-----------|----------------|
| ROUTE NO.             | SECTION  | COUNTY            | TOTAL SHEETS | SHEET NO. | SHEET NO. 1 OF |
| F.A.P. 866            | *        | LAKE              | 554          | 313       | 4 SHEETS       |
| FED. ROAD DIST. NO. 7 | ILLINOIS | FED. AID PROJECT- |              |           |                |

\*(L-2[W,R];6,6A & 6 EXT) WRS-1



**GENERAL NOTES**

Reinforcement bars shall conform to the requirements of ASTM A 706 Gr 60 (IL Modified). See Special Provisions.  
 For Total Bill of Material see Sheet 4 of 4.

**DESIGN SPECIFICATIONS**

1996 AASHTO w/1997, 1998, 1999, 2000 & 2002 Interims.

**DESIGN STRESSES**

**FIELD UNITS**

f<sub>c</sub> = 3,500 psi  
 f<sub>y</sub> = 60,000 psi (Reinf.)



EXPIRES 11-30-2010

|          |        |
|----------|--------|
| DESIGNED | S.S.T. |
| CHECKED  | J.A.Z. |
| DRAWN    | E.B.   |
| CHECKED  | S.S.T. |

**RETAINING WALL NO. 2, 2A & 3  
 PLAN & ELEVATION**  
 ILLINOIS ROUTE 83  
 F.A.P. ROUTE 866  
 LAKE COUNTY  
 Sta. 407+70 to Sta. 454+96.21

DATE: 1/30/09  
 GRAEF, ANHALT, SCHLOEMER & ASSOCIATES INC  
 CHICAGO ILLINOIS