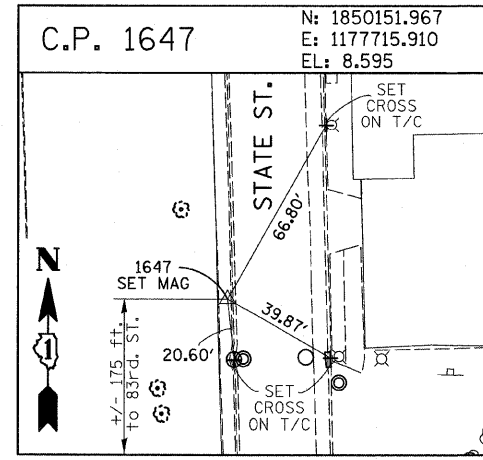
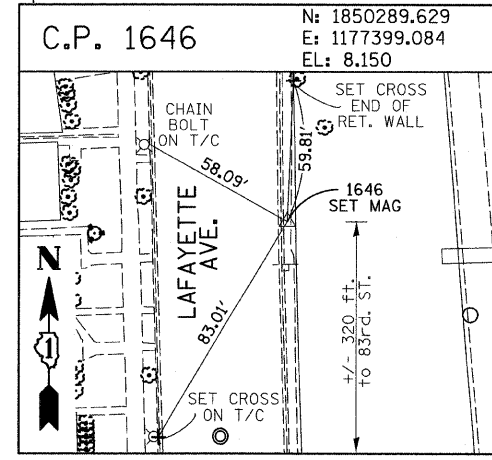
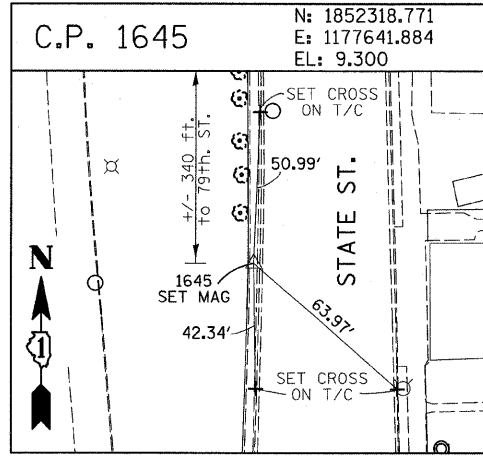
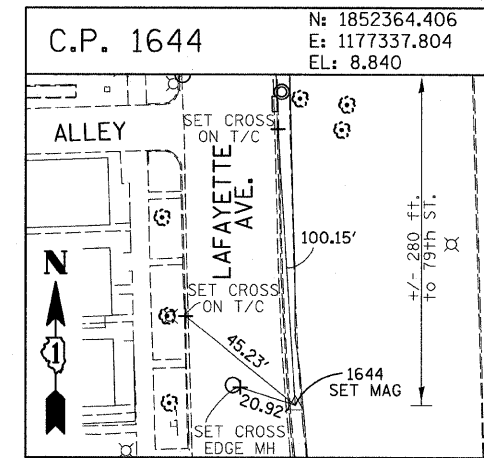
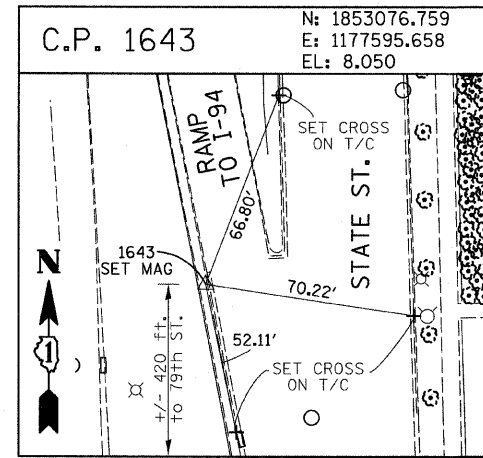
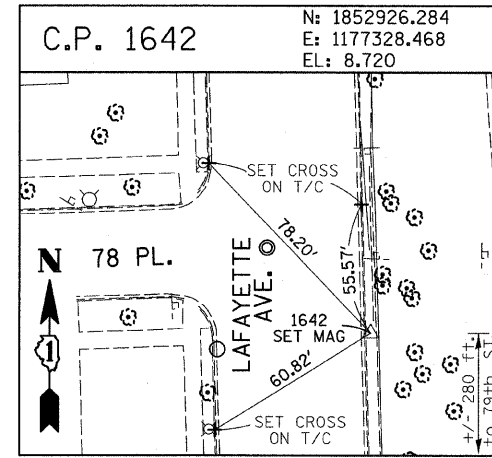
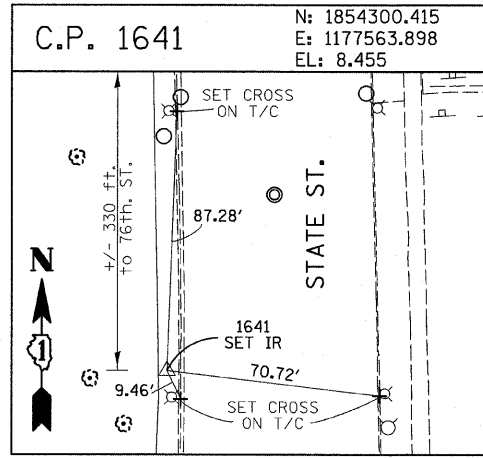
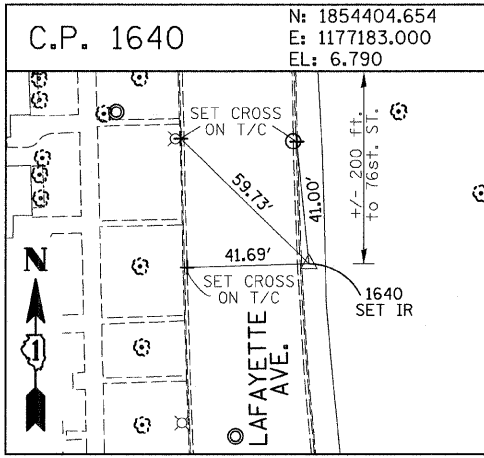
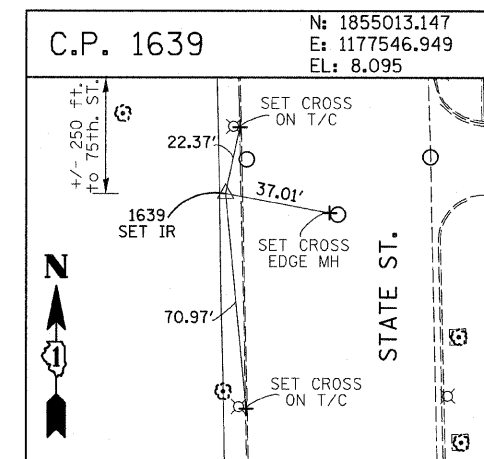
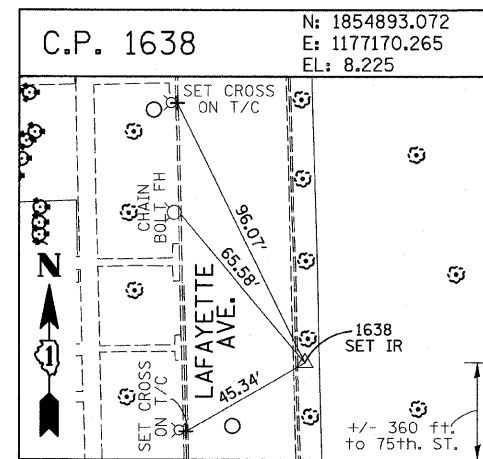
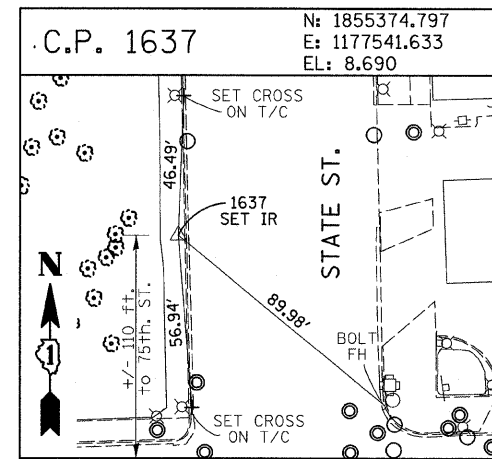
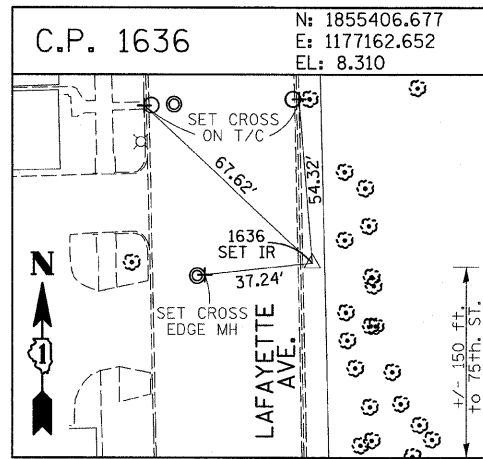
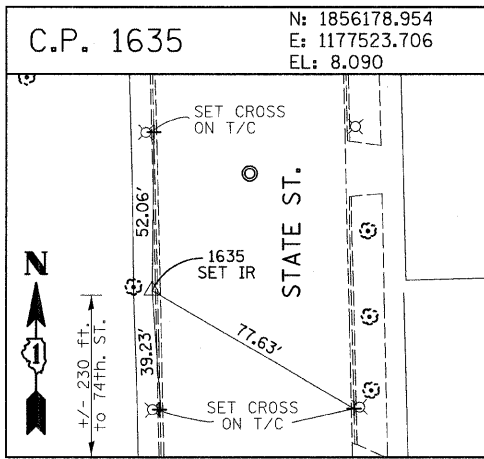
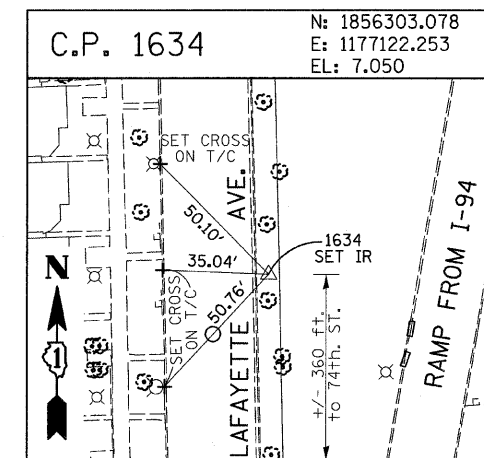
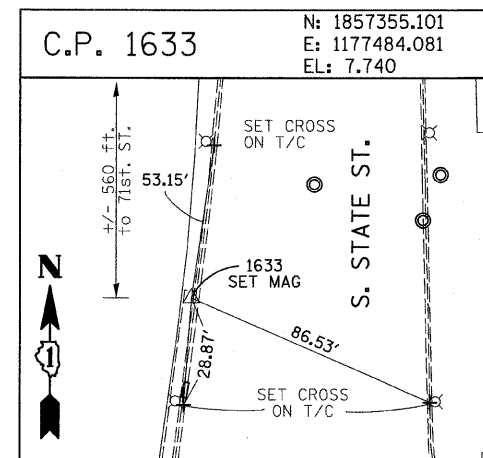
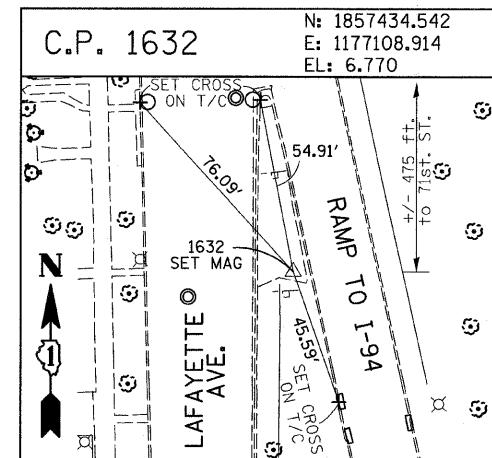
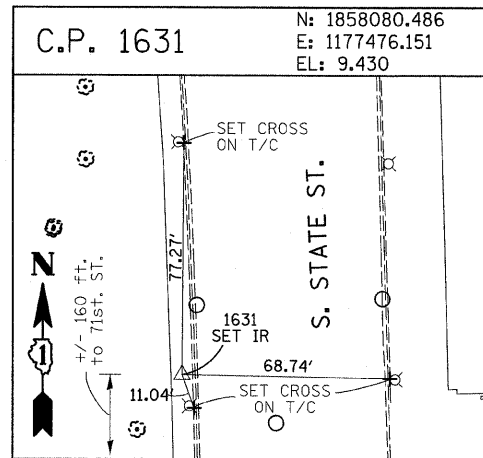
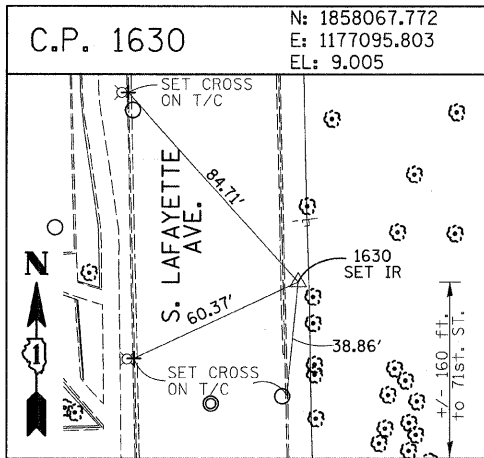


F.A.I. RTE.	SECTION	COUNTY	TOTAL SHEETS	SHEET NO.
94	(1516.1&1717) I-8	COOK	40	12
STA. 2248+65.17		TO STA. 2258+61.09		
FED. ROAD DIST. NO.		ILLINOIS FED. AID PROJECT		
62972				



American Surveying Consultants, P.C.
 1037 Flood St., Chicago, IL 60607
 312.467.1100

REVISIONS	
NAME	DATE

ILLINOIS DEPARTMENT OF TRANSPORTATION
 F.A.I. 94 (DAN RYAN EXPRESSWAY)
 SURVEY TIES FOR CONTROL POINTS
 SHEET 3 OF 7
 SCALE: 1"=30'
 DATE: OCTOBER 17, 2008
 DRAWN BY: GSP
 CHECKED BY: MMW

10/17/2008 10:44:59 AM P:\0231\3000\2248+65.17\509713.dwg