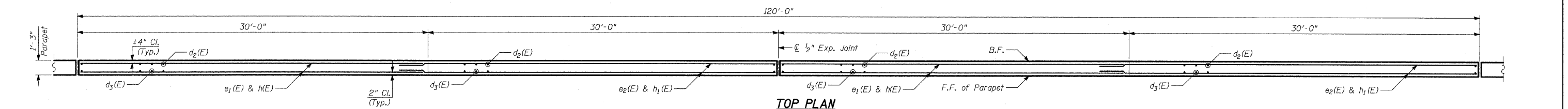
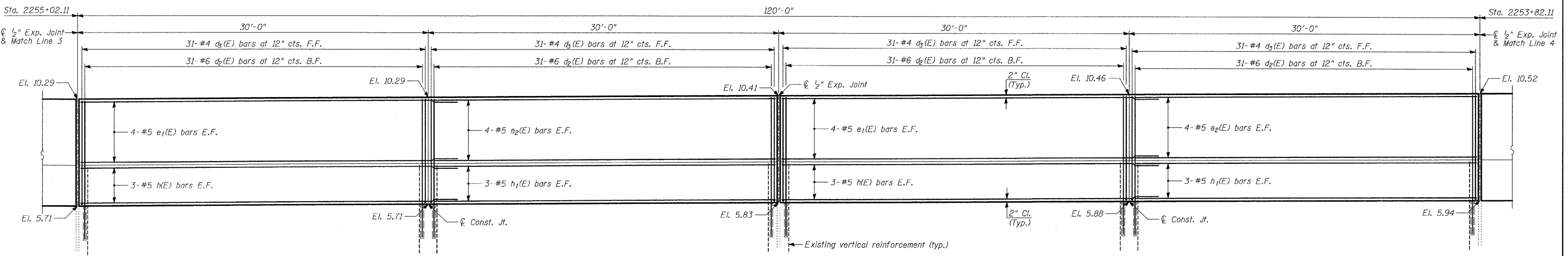


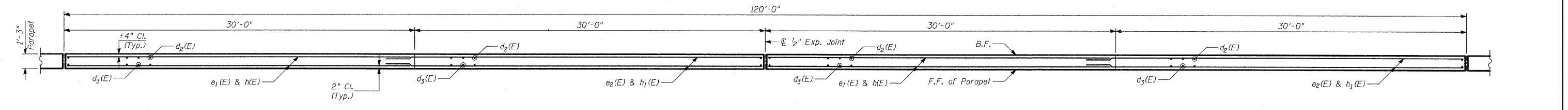
FRONT FACE ELEVATION - FLUTED PARAPET



TOP PLAN



FRONT FACE ELEVATION - FLUTED PARAPET



TOP PLAN

LAP SPLICES

Bar	Lap
#4	1'-8"
#5	2'-2"
#6	2'-7"

NOTES:

1. B.F. - denotes Back Face.
2. E.F. - denotes Each Face.
3. F.F. - denotes Front Face.
4. Work this sheet with Sheets 25-28.
5. For Construction and Expansion Joint Details, see "Fluted Knee Wall Standard Details".
6. For Bill of Material and General Notes, see Sheet 28.

TYLIN INTERNATIONAL

REVISIONS	
NAME	DATE

ILLINOIS DEPARTMENT OF TRANSPORTATION
 F.A.I. 94 (DAN RYAN EXPRESSWAY)
 N. OF 89TH ST. TO S. OF 87TH ST.
 PARAPET RECONSTRUCTION
 PLAN AND ELEVATION
 STA. 2256+22.11 TO STA. 2253+82.11
 S.N. DESIGNED BY: MI, TB
 SCALE: N.T.S. DRAWN BY: TB
 DATE: OCTOBER 17, 2008 CHECKED BY: MI