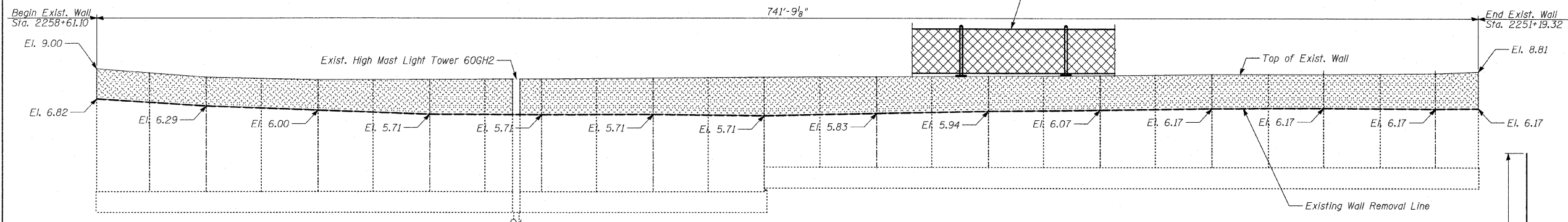


- NOTES:**
1. B.F. - denotes Back Face.
  2. E.F. - denotes Each Face.
  3. F.F. - denotes Front Face.
  4. Work this sheet with other Plan and Elevation Sheets.



**LIMITS OF REMOVAL OF EXISTING STRUCTURE (LOOKING EAST)**

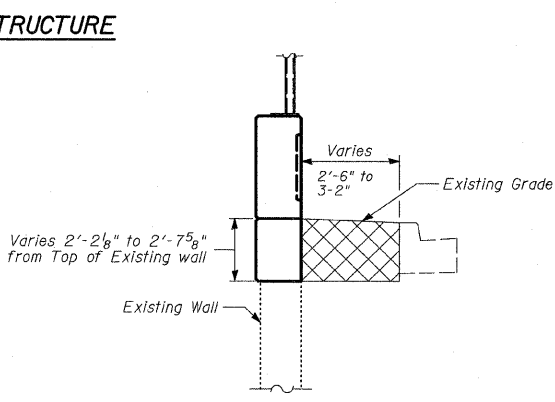
**BILL OF MATERIAL**

Bar	No.	Size	Length	Shape
d2(E)	764	#6	6'-2"	—
d3(E)	764	#4	5'-3"	L
e1(E)	80	#5	32'-2"	—
e2(E)	80	#5	29'-8"	—
e3(E)	8	#5	28'-5"	—
e4(E)	8	#5	33'-8"	—
e5(E)	8	#5	28'-2"	—
e6(E)	8	#5	22'-8"	—
e7(E)	8	#5	13'-5"	—
e8(E)	8	#5	11'-9"	—
h(E)	60	#5	32'-2"	—
h1(E)	60	#5	29'-8"	—
h2(E)	6	#5	28'-5"	—
h3(E)	6	#5	33'-8"	—
h4(E)	6	#5	28'-2"	—
h5(E)	6	#5	22'-8"	—
h6(E)	6	#5	13'-5"	—
h7(E)	6	#5	11'-9"	—
Concrete Removal		CU YD		78
Structure Excavation		CU YD		188
Concrete Superstructure		CU YD		157
Protective Coat		SQ YD		859
Rustication Finish		SQ FT		1,353
Reinforcement Bars, Epoxy Coated		POUND		20,810

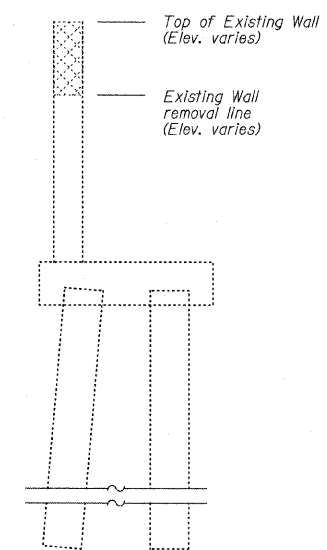
- NOTES:**
1. Remove existing wall to elevations shown. Existing vertical reinforcement shall be cleaned and incorporated into the new construction. Cost included with "Concrete Removal".
  2. Existing vertical reinforcement bars that are damaged during concrete removal operations at the top of the existing walls shall be repaired or replaced using approved bar splicer or anchorage system. Cost included with "Concrete Removal".
  3. Backfill behind the proposed wall, within the limits of partial existing structure removal, shall be with Porous Granular Embankment. Cost included with "Structure Excavation".
  4. Cost of removal of existing chain link fence attached to structure to be included with "Concrete Removal".
  5. Drill and epoxy grout d2(e) bars according to Article 584 of the Standard Specifications. The cost shall be included with "Reinforcement Bars, Epoxy Coated".
  6. The top edge of Knee Wall Footing or Concrete Median Surface, 5" (Modified) shall be 3/8" higher than the top of Existing Curb to account for future settlement.

**LEGEND**

- Concrete Removal
- Structure Excavation



**LIMITS OF STRUCTURE EXCAVATION**



**TYPICAL CROSS-SECTION**

**LAP SPLICES**

Bar	Lap
#4	1'-8"
#5	2'-2"
#6	2'-7"

**TYLIN INTERNATIONAL**

**REVISIONS**

NAME	DATE

ILLINOIS DEPARTMENT OF TRANSPORTATION  
**F.A.I. 94 (DAN RYAN EXPRESSWAY)**  
**N. OF 89TH ST. TO S. OF 87TH ST.**  
**PARAPET RECONSTRUCTION**  
**PLAN AND ELEVATION**  
**STA. 2252+02.11 TO STA. 2251+19.32**  
 S.N. DESIGNED BY: MI, TB  
 SCALE: N.T.S. DRAWN BY: TB  
 DATE: OCTOBER 17, 2008 CHECKED BY: MI