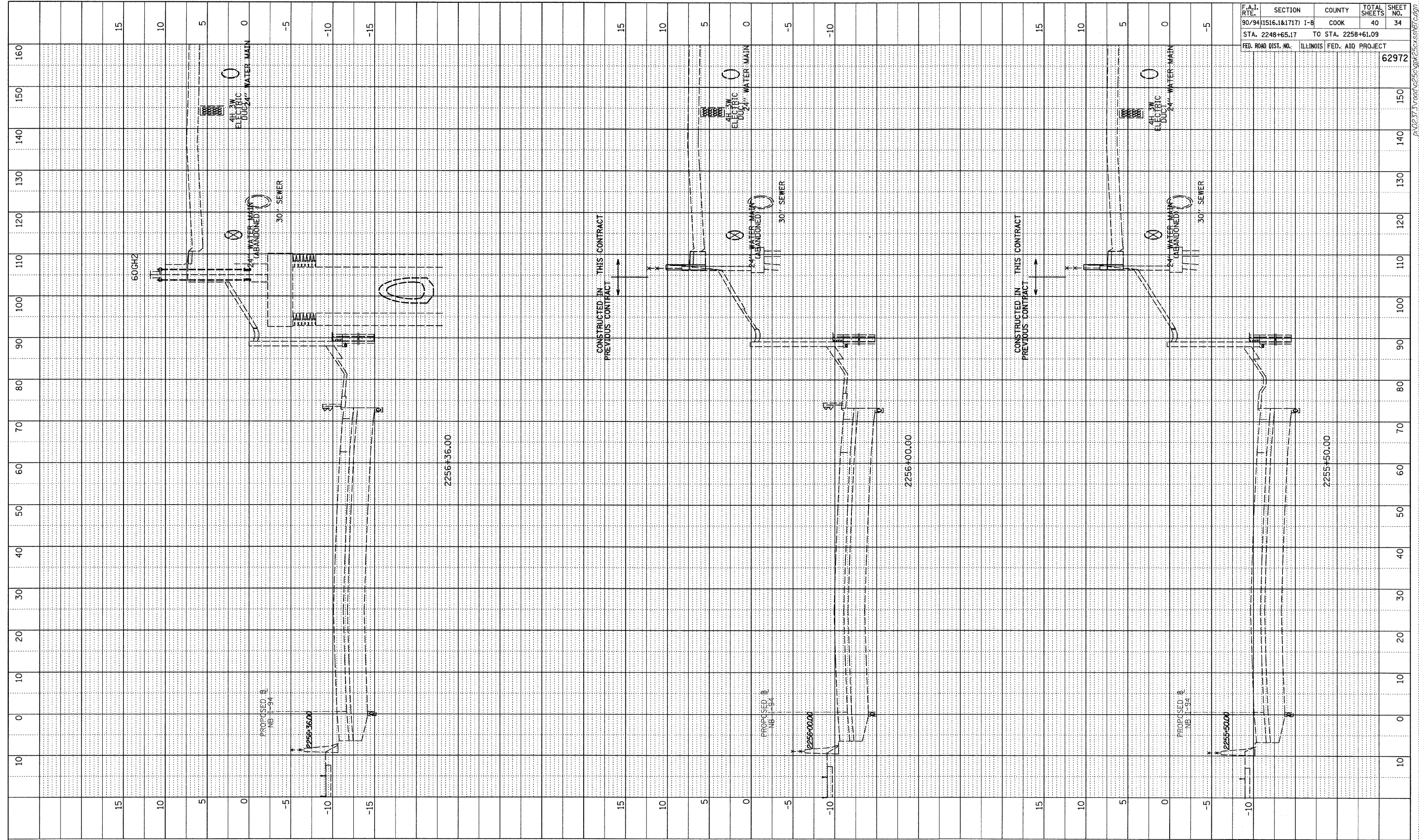


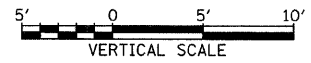
PROFILE	BY	DATE
SURVEYED		
DESIGNED		
CHECKED		
IN CHARGE		
NOTE BOOK NO.		
STRUCTURE NOTATIONS		



F.A.I. RTE.	SECTION	COUNTY	TOTAL SHEETS	SHEET NO.
90/94 (1516.1&1717) I-B	I-B	COOK	40	34
STA. 2248+65.17	TO STA. 2258+61.09			
FED. ROAD DIST. NO.	ILLINOIS	FED. AID PROJECT		

62972

TYLIN INTERNATIONAL



NB I-94 (DAN RYAN EXPRESSWAY)  
 STA. 2255+50 TO STA. 2256+36

P:\0237\road\2550gk\2550s87c.dgn