

INDEX OF SHEETS

FOR INDEX OF SHEETS, SEE SHEET NO. 2

DAN RYAN EXPRESSWAY:	ADT (2010)	DESIGN SPEED	POSTED SPEED
SB I-94 (DAN RYAN)	140,500	60 MPH	55 MPH
SB 87TH STREET EXIT RAMP	12,600	45 MPH	40 MPH
SB 87TH STREET ENTRANCE RAMP	13,400	45 MPH	40 MPH

CROSS STREETS AND FRONTAGE ROADS:

	ADT	POSTED SPEED
87TH STREET	24,900	30 MPH
SOUTH LAFAYETTE AVENUE	6,800	30 MPH

DESCRIPTION OF PROJECT

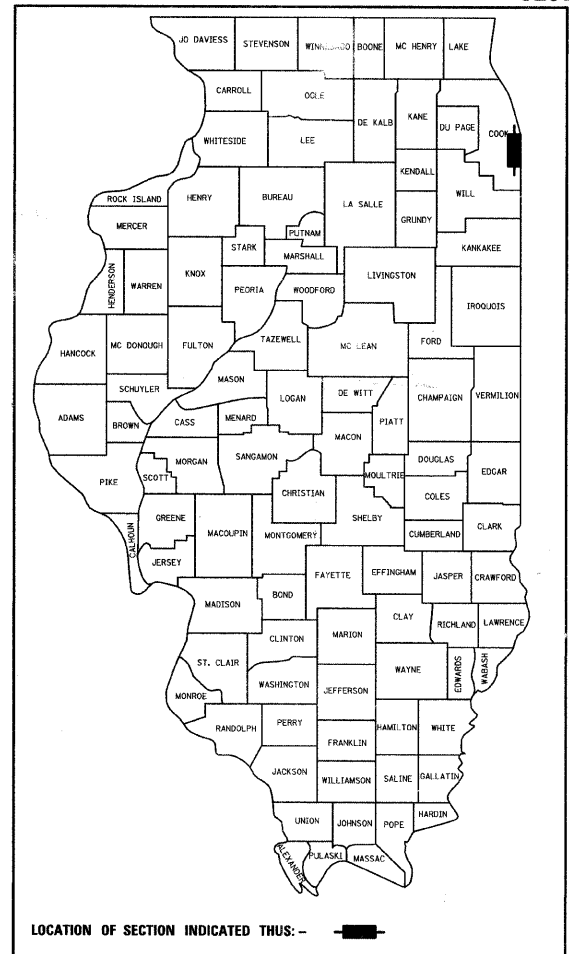
CONSTRUCTION OF FLUTED KNEE WALLS AND HIGH MAST LIGHT TOWER MINI RETAINING WALL LOCATED WITHIN THE PROJECT LIMITS

**STATE OF ILLINOIS
DEPARTMENT OF TRANSPORTATION
DIVISION OF HIGHWAYS**

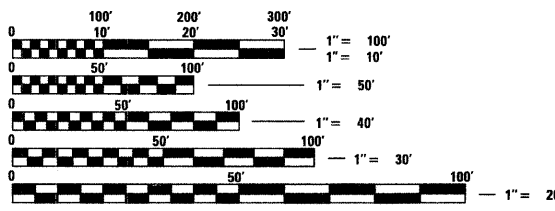
PROPOSED HIGHWAY PLANS

**F.A.I. ROUTE 94 (DAN RYAN EXPRESSWAY)
SECTION 1717 I-7
FLUTED KNEE WALL CONSTRUCTION
ALONG LAFAYETTE AVE. FROM 87TH STREET TO 85TH STREET
COOK COUNTY
C-91-237-05**

F.A.I. RTE.	SECTION	COUNTY	TOTAL SHEETS	SHEET NO.
94	1717 I-7	COOK	47	1
FED. ROAD DIST. NO.	ILLINOIS	FED. AID PROJECT		
D-91-237-05			62979	



PROJECT LOCATED IN THE CITY OF CHICAGO



FULL SIZE PLANS HAVE BEEN PREPARED USING STANDARD ENGINEERING SCALES; REDUCED SIZED PLANS WILL NOT CONFORM TO STANDARD SCALES. IN MAKING MEASUREMENTS ON REDUCED PLANS, THE ABOVE SCALES MAY BE USED

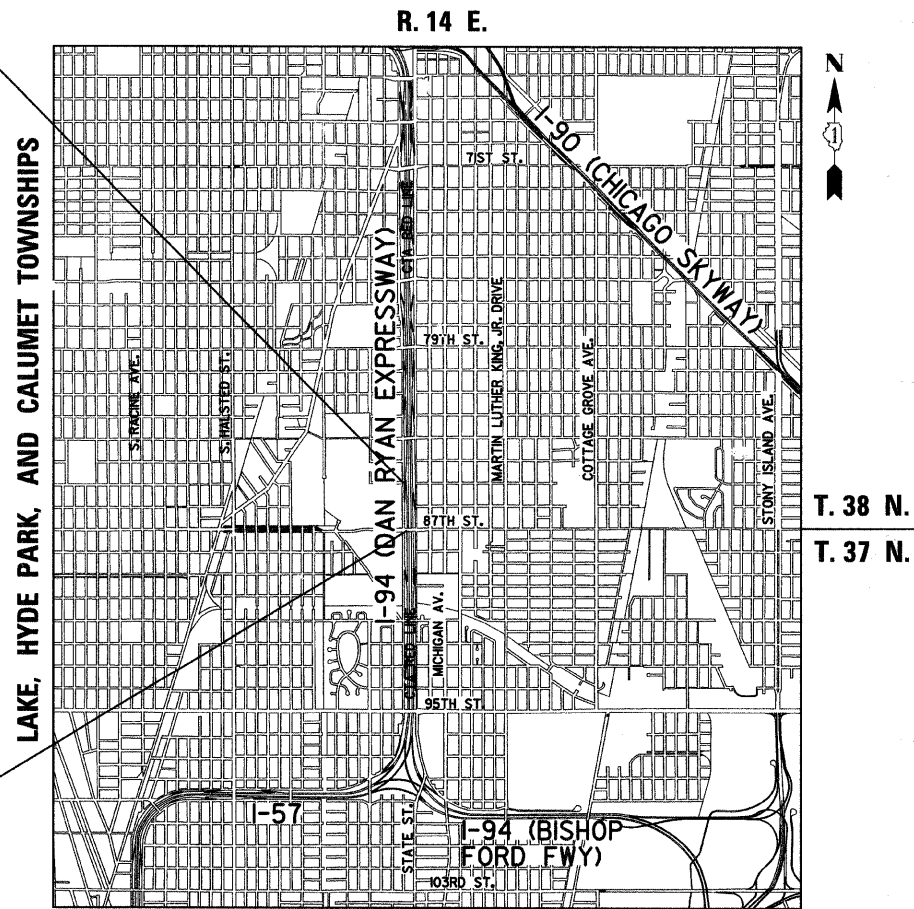
DIGGER:
CHICAGO UTILITY ALERT NETWORK
(312) 744-7000

CTA CONTACT:
DAVID HEARD,
MANAGER, CONSTRUCTION
MANAGEMENT OVERSIGHT
(312) 681-3862

CONTRACT NO. 62979

F.A.I. 94 (RYAN) PROJECT LIMIT
STA. 1270+24.39 (SB I-94)

F.A.I. 94 (RYAN) PROJECT LIMIT
STA. 1259+91.12 (SB I-94)



LOCATION MAP

0 1/2 MILE 1 MILE
GROSS LENGTH OF PROJECT = 1033.27 FT. = 0.20 MI.
MAP SCALE: 1" = 1/2 MILE
NET LENGTH OF PROJECT = 1033.27 FT. = 0.20 MI.

**STATE OF ILLINOIS
DEPARTMENT OF TRANSPORTATION
DIVISION OF HIGHWAYS**

SUBMITTED October 9, 2008

Diane M. O'Keefe
DEPUTY DIRECTOR OF HIGHWAYS, REGION ENGINEER

May 8, 2009
Charles J. Ingersoll
ENGINEER OF DESIGN AND ENVIRONMENT

May 8, 2009
Christine M. Reed
DIRECTOR OF HIGHWAYS, CHIEF ENGINEER

CONTRACT 26C

Signed Dean A. Krasling
 Date October 7, 2008

TYLIN INTERNATIONAL
PRINTED BY THE AUTHORITY OF THE STATE OF ILLINOIS

DISTRICT ONE DESIGN / PROJECT MANAGER:
BRIAN KUTTAB (847) 705 - 4431