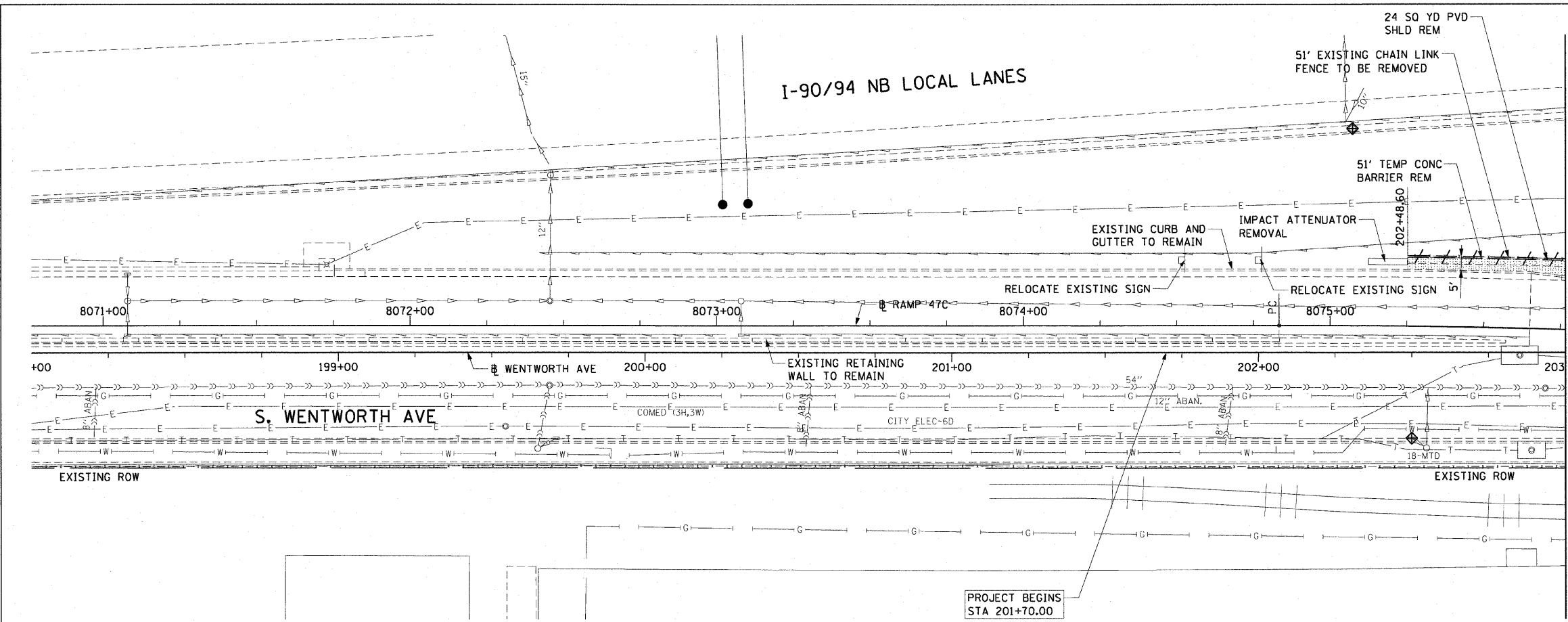


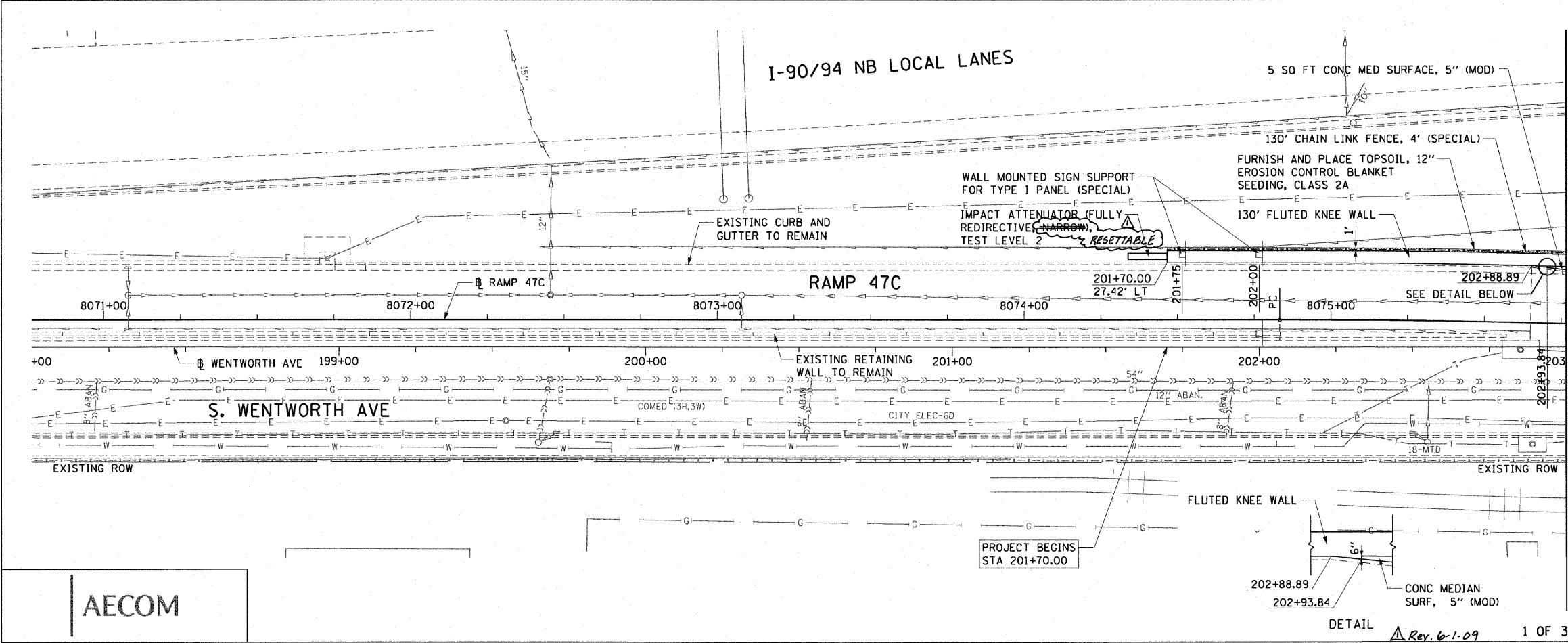
F.A.I. RTE.	SECTION	COUNTY	TOTAL SHEETS	SHEET NO.
90/94	*	COOK	22	14
STA. 201+70.00 TO STA. 203+00				
FED. ROAD DIST. NO. 1 ILLINOIS FED. AID PROJECT				
• (2021-922 PT1 & 2122-921 PT1) I-1 62986				



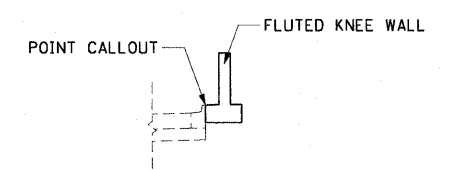
- LEGEND:**
- AREA REMOVALS
 - LINEAR REMOVALS
 - INLET FILTER

MATCH LINE STA 203+00

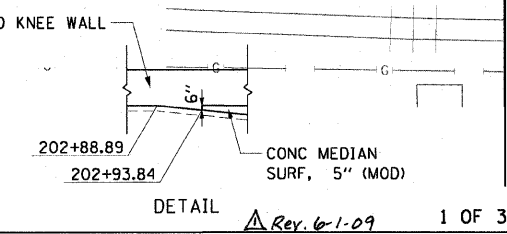
**EXISTING CONDITIONS AND REMOVAL
PROPOSED IMPROVEMENTS**



- NOTES:**
1. SEE STRUCTURAL DETAILS FOR FLUTED KNEE WALL DETAILS.
 2. ALL POINT CALLOUTS ARE TAKEN AT THE EDGE OF THE KNEE WALL BASE (SEE BELOW).
 3. SEE ROADWAY DETAILS FOR CONCRETE MEDIAN DETAILS.
 4. SEE ROADWAY DETAILS FOR WALL MOUNTED SIGN SUPPORT DETAILS.



MATCH LINE STA 203+00



AECOM

REVISIONS	
NAME	DATE

ILLINOIS DEPARTMENT OF TRANSPORTATION
F.A.I. 90/94 (DAN RYAN EXPRESSWAY)
59TH ST TO 47TH ST (NORTHBOUND KNEE WALLS)
**EXISTING AND PROPOSED ROADWAY PLANS
WENTWORTH AVENUE**

SCALE: 1"=20'
DATE: JANUARY 14, 2009

DRAWN BY: PHP
CHECKED BY: NJH

\\usscgrif\p207\p40466\p40466.dwg:ci\1\28-knee-wall_1_fence.dwg contract 29 dp2900\2a.dwg 1/13/2009 12:08:48 PM