

SUMMARY OF QUANTITIES

100% STATE

CODE NO.	ITEM	UNIT	QUANTITY	URBAN ROADWAY SFTY-4A
20200100	EARTH EXCAVATION	CU YD	126	126
21101645	TOPSOIL FURNISH AND PLACE, 12"	SO YD	82	82
25000210	SEEDING, CLASS 2A	ACRE	0.02	0.02
25000400	NITROGEN FERTILIZER NUTRIENT	POUND	2	2
25000500	PHOSPHORUS FERTILIZER NUTRIENT	POUND	2	2
25000600	POTASSIUM FERTILIZER NUTRIENT	POUND	2	2
25100630	EROSION CONTROL BLANKET	SO YD	82	82
28000510	INLET FILTERS	EACH	14	14
42001300	PROTECTIVE COAT	SO YD	103	103
44004250	PAVED SHOULDER REMOVAL	SO YD	354	354
66400550	CHAIN LINK FENCE, 4' (SPECIAL)	FOOT	722	722
66410300	CHAIN LINK FENCE REMOVAL	FOOT	643	643
67100100	MOBILIZATION	L SUM	1	1
70101800	TRAFFIC CONTROL AND PROTECTION, (SPECIAL)	L SUM	1	1
70106800	CHANGEABLE MESSAGE SIGN	CAL MO	4	4
X0322256	TEMPORARY INFORMATION SIGNING	SO FT	26	26
X0324640	FLUTED KNEEWALL	FOOT	718	718
X0324700	WALL MOUNTED SIGN SUPPORT FOR TYPE I PANEL (SPECIAL)	EACH	2	2
X6065740	CONCRETE MEDIAN SURFACE, 5" (MODIFIED)	SO FT	922	922
X032147a	TEMPORARY CONCRETE BARRIER (REMOVE)	FOOT	643	643
Z0013798	CONSTRUCTION LAYOUT	L SUM	1	1
Z0029999	IMPACT ATTENUATOR REMOVAL	EACH	1	1
X0325891	IMPACT ATTENUATORS (FULLY REDIRECTIVE, ^{RESETTABLE} NARROW, TEST LEVEL 2)	EACH	1	1

AECOM

REVISIONS	
NAME	DATE


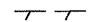

ILLINOIS DEPARTMENT OF TRANSPORTATION
F.A.I. 90/94 (DAN RYAN EXPRESSWAY)
59TH ST TO 47TH ST (NORTHBOUND KNEE WALLS)

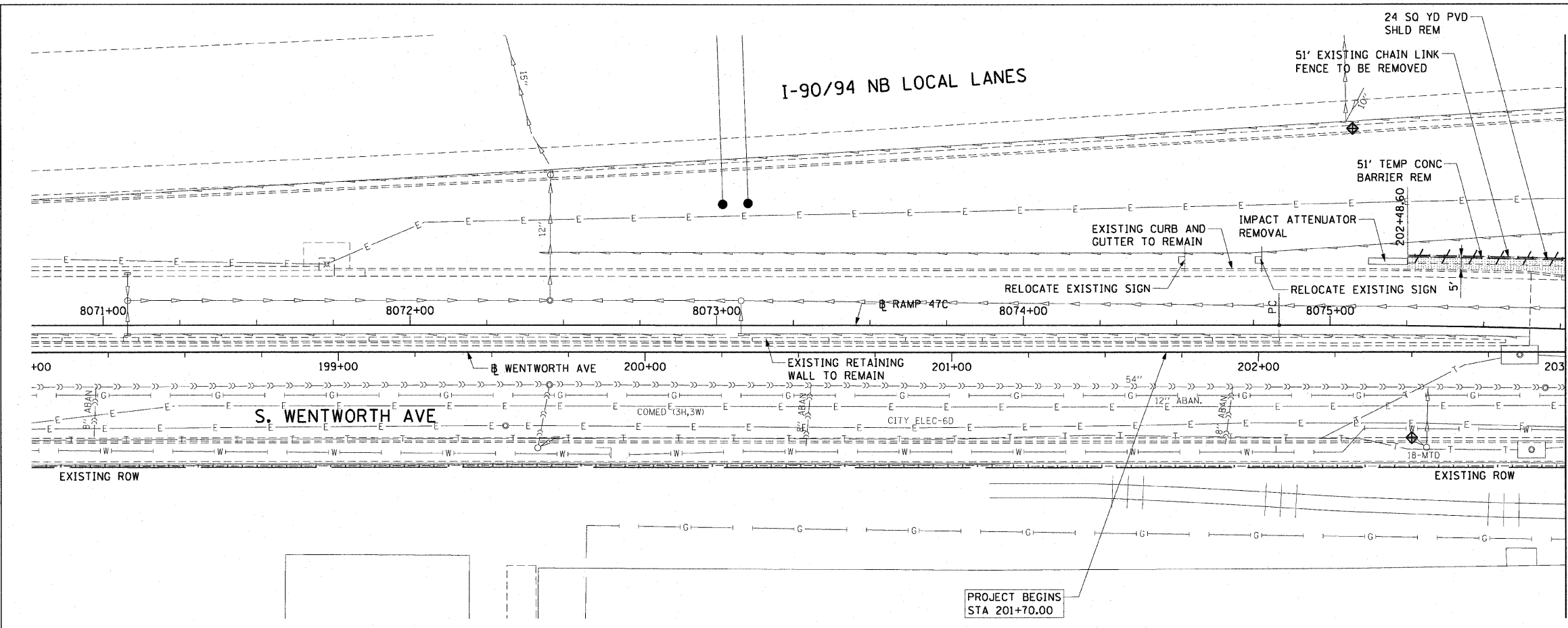
SUMMARY OF QUANTITIES

SCALE: NONE
DATE: JANUARY 14, 2009
DRAWN BY: PHP
CHECKED BY: NJH

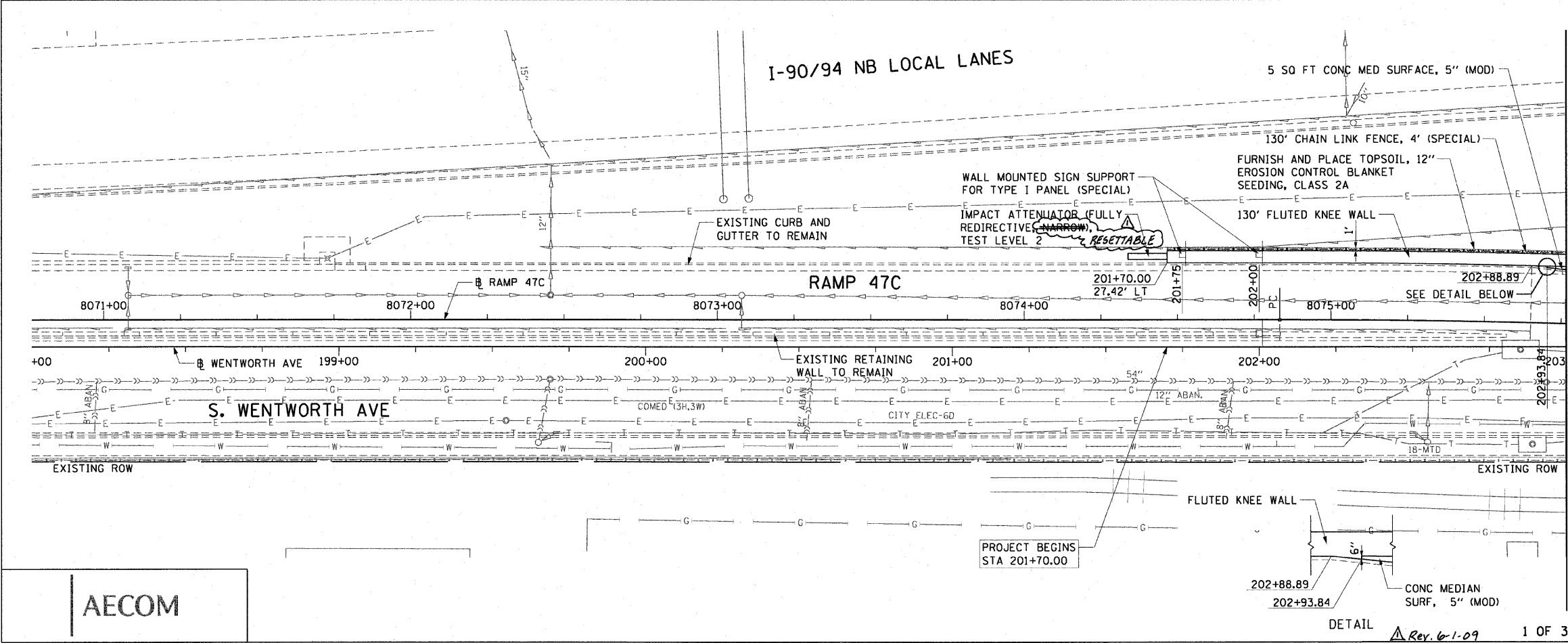
C:\Documents and Settings\mnm\My Desktop\Dan Ryan P4046829.sxd

F.A.I. RTE.	SECTION	COUNTY	TOTAL SHEETS	SHEET NO.
90/94		COOK	22	14
STA. 201+70.00		TO STA. 203+00		
FED. ROAD DIST. NO. 1 ILLINOIS FED. AID PROJECT				
• (2021-922 PT1 & 2122-921 PT1) I-1 62986				

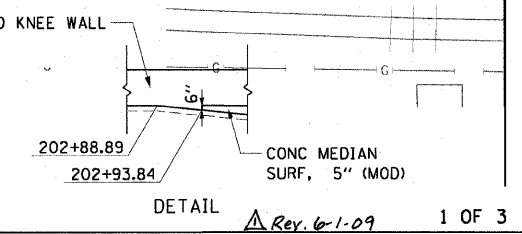
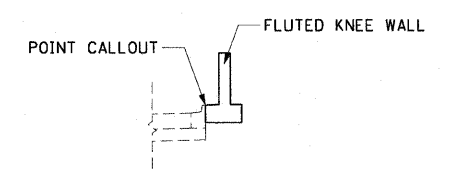
- LEGEND:**
-  AREA REMOVALS
 -  LINEAR REMOVALS
 -  INLET FILTER



**EXISTING CONDITIONS AND REMOVAL
PROPOSED IMPROVEMENTS**



- NOTES:**
1. SEE STRUCTURAL DETAILS FOR FLUTED KNEE WALL DETAILS.
 2. ALL POINT CALLOUTS ARE TAKEN AT THE EDGE OF THE KNEE WALL BASE (SEE BELOW).
 3. SEE ROADWAY DETAILS FOR CONCRETE MEDIAN DETAILS.
 4. SEE ROADWAY DETAILS FOR WALL MOUNTED SIGN SUPPORT DETAILS.



REVISIONS	
NAME	DATE

ILLINOIS DEPARTMENT OF TRANSPORTATION
F.A.I. 90/94 (DAN RYAN EXPRESSWAY)
59TH ST TO 47TH ST (NORTHBOUND KNEE WALLS)

**EXISTING AND PROPOSED ROADWAY PLANS
WENTWORTH AVENUE**

SCALE: 1"=20'
DATE: JANUARY 14, 2009

DRAWN BY: PHP
CHECKED BY: NJH

AECOM

\\uscdg1p207\p40466\p40466\civil\28-knee-wall\1_fence\DWG\contract 29 dp2900\2a.dwg 1/13/2009 12:08:48 PM