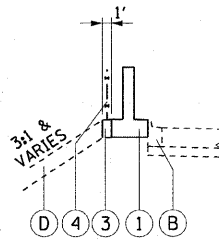
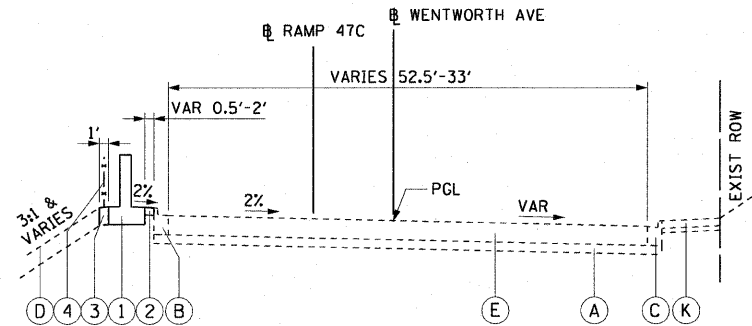


① EX TYPICAL SECTION
S. WENTWORTH AVENUE
STA 202+48.60 TO STA 206+14.00



STA 201+70.00 TO STA 202+93.84



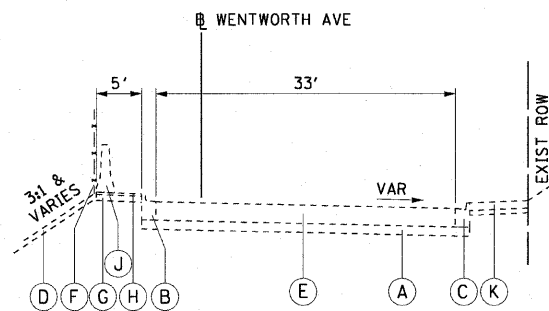
① PR TYPICAL SECTION
S. WENTWORTH AVENUE
STA 201+70.00 TO STA 206+14.00

EXISTING LEGEND:

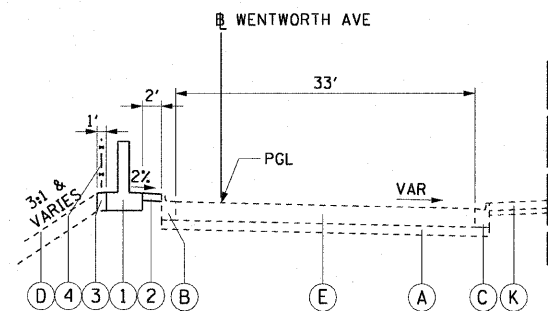
- (A) SUB-BASE GRANULAR MATERIAL, TYPE B, 8"
- (B) COMBINATION CONCRETE CURB AND GUTTER, TYPE B-6.12 (MODIFIED)
- (C) COMBINATION CONCRETE CURB AND GUTTER, TYPE B-V.12
- (D) GRASS AREA
- (E) PORTLAND CEMENT CONCRETE PAVEMENT, 10" (JOINTED)
- (F) CHAIN LINK FENCE, 4'
- (G) AGGREGATE BASE COURSE, TYPE B, 4"
- (H) BITUMINOUS SHOULDERS, 1 1/2"
- (J) TEMPORARY CONCRETE BARRIER
- (K) PCC SIDEWALK, 5" AND SAND CUSHION, 3"

PROPOSED LEGEND:

- ① FLUTED KNEE WALL
- ② CONCRETE MEDIAN SURFACE, 5" (MODIFIED)
- ③ SEEDING CLASS 2A / TOPSOIL FURNISH AND PLACE, 12" / EROSION CONTROL BLANKET
- ④ CHAIN LINK FENCE, 4' (SPECIAL)



② EX TYPICAL SECTION
S. WENTWORTH AVENUE
STA 206+14.00 TO STA 208+90.55



② PR TYPICAL SECTION
S. WENTWORTH AVENUE
STA 206+14.00 TO STA 208+90.55

REVISIONS	
NAME	DATE