
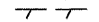

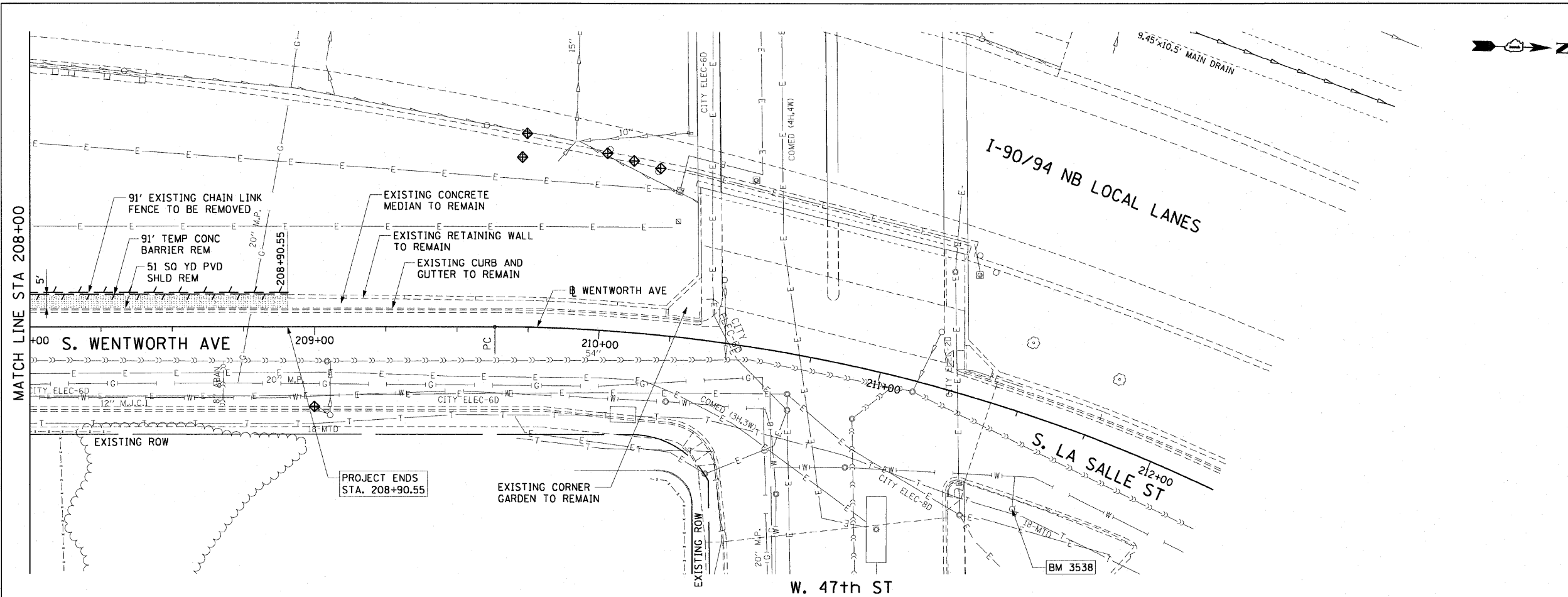


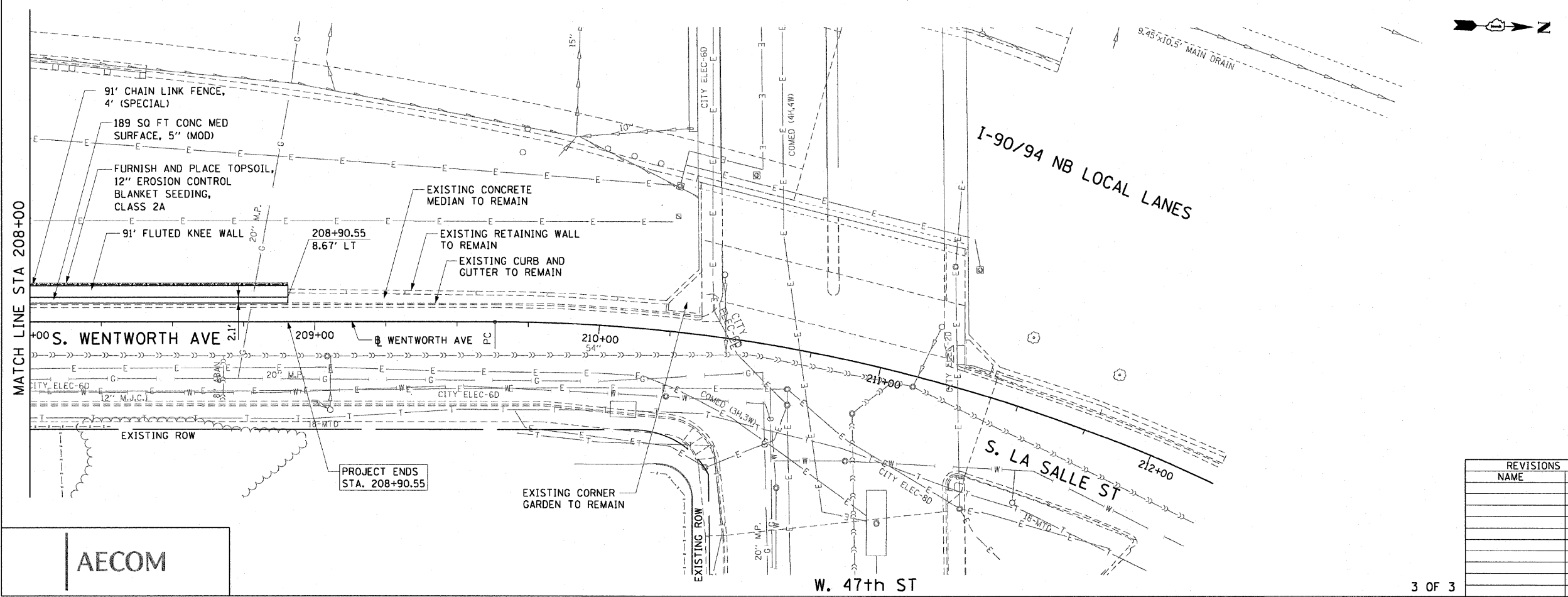
F.A.I. RTE.	SECTION	COUNTY	TOTAL SHEETS	SHEET NO.
90/94	*	COOK	22	16
STA. 208+00		TO STA. 208+90.55		
FED. ROAD DIST. NO. 1 ILLINOIS FED. AID PROJECT				
• (2021-922 PT1 & 2122-921 PT1) I-1 62986				

LEGEND:

-  AREA REMOVALS
-  LINEAR REMOVALS
-  INLET FILTER



EXISTING CONDITIONS AND REMOVAL  
PROPOSED IMPROVEMENTS



NOTES:

1. SEE STRUCTURAL DETAILS FOR FLUTED KNEE WALL DETAILS.
2. ALL POINT CALLOUTS ARE TAKEN AT THE EDGE OF THE KNEE WALL BASE.
3. SEE ROADWAY DETAILS FOR CONCRETE MEDIAN DETAILS.
4. THE STEM OF THE FLUTED KNEE WALL SHALL MATCH THE EXISTING RETAINING WALL FLUTED PARAPET.

REVISIONS	
NAME	DATE

ILLINOIS DEPARTMENT OF TRANSPORTATION  
F.A.I. 90/94 (DAN RYAN EXPRESSWAY)  
59TH ST TO 47TH ST (NORTHBOUND KNEE WALLS)  
**EXISTING AND PROPOSED ROADWAY PLANS  
WENTWORTH AVENUE**  
SCALE: 1"=20'  
DATE: JANUARY 14, 2009  
DRAWN BY: AMM/MRK  
CHECKED BY: JAL

AECOM

V:\uscbt\p207\p40466\p40466.dwg\IN28\_knee\_wal1.dwg\p207\contract 29\p2900202.dwg 12/28/09 PM