

F.A.I. RTE.	SECTION	COUNTY	TOTAL SHEETS	SHEET NO.
90/94	*	COOK	28	8
STA.		TO STA.		
FED. ROAD DIST. NO. 1		ILLINOIS	FED. AID PROJECT	
		* (2021-922 PT1 & 2122-921 PT1) 1-2 62987		



**CURVE C4701**  
P.I. STA= 8068+34.90  
N= 1,872,302.10  
E= 1,175,769.16  
Δ= 2° 04' 05"  
D= 1° 08' 45"  
R= 5000.00'  
T= 90.24'  
L= 180.47'  
E= 0.81'  
e= N/A  
T.R.= N/A  
S.E. RUN= N/A  
P.C. STA= 8067+44.66  
N= 1,872,211.86  
E= 1,175,768.33  
P.T. STA= 8069+25.12  
N= 1,872,392.31  
E= 1,175,766.72

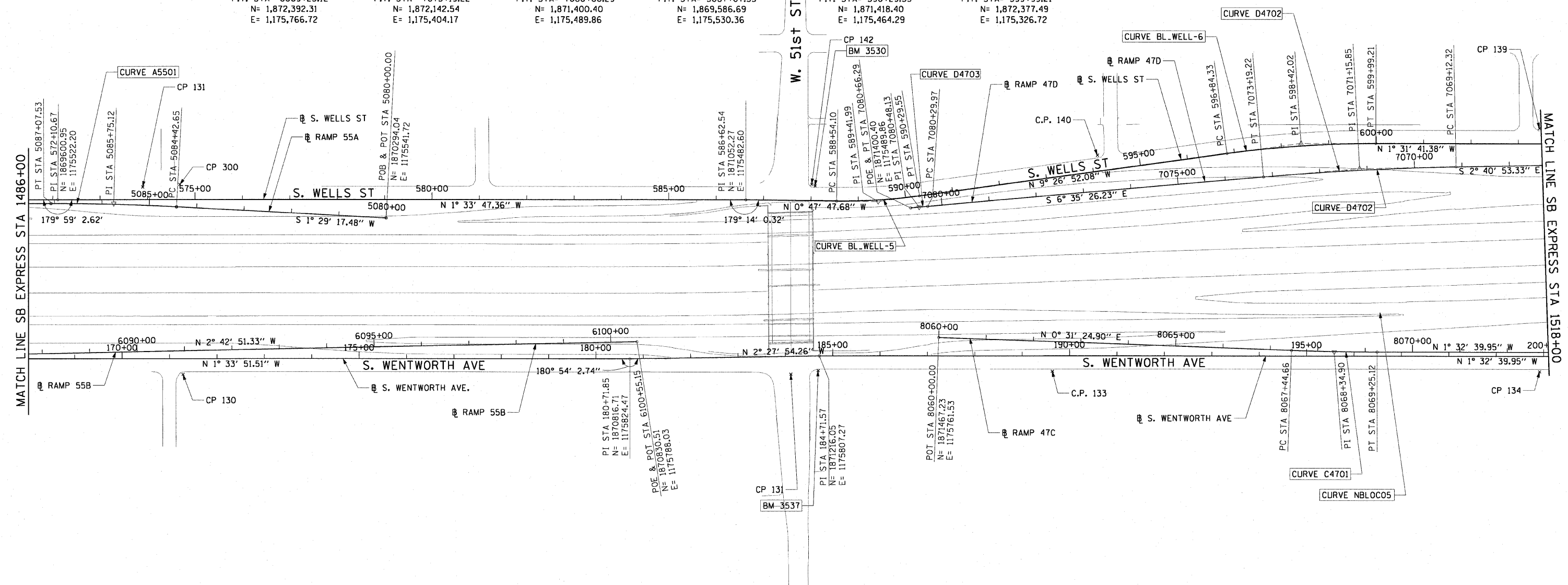
**CURVE D4702**  
P.I. STA= 7071+15.85  
N= 1,872,344.72  
E= 1,175,380.81  
Δ= 3° 54' 33"  
D= 0° 57' 38"  
R= 5964.00'  
T= 203.53'  
L= 406.91'  
E= 3.47'  
e= N/A  
T.R.= N/A  
S.E. RUN= N/A  
P.C. STA= 7069+12.32  
N= 1,872,548.03  
E= 1,175,371.29  
P.T. STA= 7073+19.22  
N= 1,872,142.54  
E= 1,175,404.17

**CURVE D4703**  
P.I. STA= 7080+48.13  
N= 1,871,418.45  
E= 1,175,487.83  
Δ= 0° 11' 56"  
D= 0° 32' 51"  
R= 10464.00'  
T= 18.16'  
L= 36.32'  
E= 0.02'  
e= N/A  
T.R.= N/A  
S.E. RUN= N/A  
P.C. STA= 7080+29.97  
N= 1,871,436.49  
E= 1,175,485.75  
P.T. STA= 7080+66.29  
N= 1,871,400.40  
E= 1,175,489.86

**CURVE A5501**  
P.I. STA= 5085+75.12  
N= 1,869,719.11  
E= 1,175,526.79  
Δ= 3° 02' 07"  
D= 1° 08' 45"  
R= 5000.00'  
T= 132.48'  
L= 264.89'  
E= 1.75'  
e= N/A  
T.R.= N/A  
S.E. RUN= N/A  
P.C. STA= 5084+42.65  
N= 1,869,851.55  
E= 1,175,530.23  
P.T. STA= 5087+07.53  
N= 1,869,586.69  
E= 1,175,530.36

**CURVE BL.WELL-5**  
P.I. STA= 589+41.99  
N= 1,871,331.70  
E= 1,175,478.71  
Δ= 8° 39' 04"  
D= 4° 55' 51"  
R= 1162.00'  
T= 87.89'  
L= 175.45'  
E= 3.32'  
e= N/A  
T.R.= N/A  
S.E. RUN= N/A  
P.C. STA= 588+54.10  
N= 1,871,243.82  
E= 1,175,479.94  
P.T. STA= 590+29.55  
N= 1,871,418.40  
E= 1,175,464.29

**CURVE BL.WELL-6**  
P.I. STA= 598+42.02  
N= 1,872,219.86  
E= 1,175,330.92  
Δ= 7° 55' 11"  
D= 2° 30' 55"  
R= 2278.00'  
T= 157.69'  
L= 314.87'  
E= 5.45'  
e= N/A  
T.R.= N/A  
S.E. RUN= N/A  
P.C. STA= 596+84.33  
N= 1,872,064.31  
E= 1,175,356.80  
P.T. STA= 599+99.21  
N= 1,872,377.49  
E= 1,175,326.72



- NOTES:**
1. AVERAGE GRID TO GROUND CONVERSION FACTOR = 1.000010988654360
  2. FOR BENCH MARK INFORMATION, SEE SHEET 1 OF ALIGNMENT PLAN SHEETS.

REVISIONS	
NAME	DATE

ILLINOIS DEPARTMENT OF TRANSPORTATION  
F.A.I. 90/94 (DAN RYAN EXPRESSWAY)  
59TH ST TO 47TH ST (SOUTHBOUND KNEE WALLS)

**ALIGNMENT PLAN**

SCALE: 1"=100'  
DATE: JANUARY 14, 2009

DRAWN BY: NJH  
CHECKED BY: RMG

**AECOM**

1/13/2009 12:26:22 PM \\scthrif\p207\p40468\40468\civil\28-knee-wall\_f\encl\sh\contract\30\300002\2017