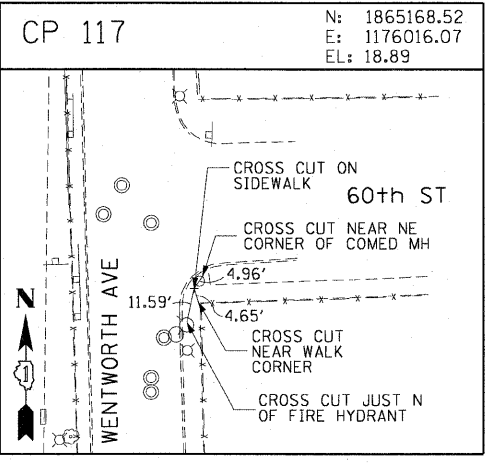
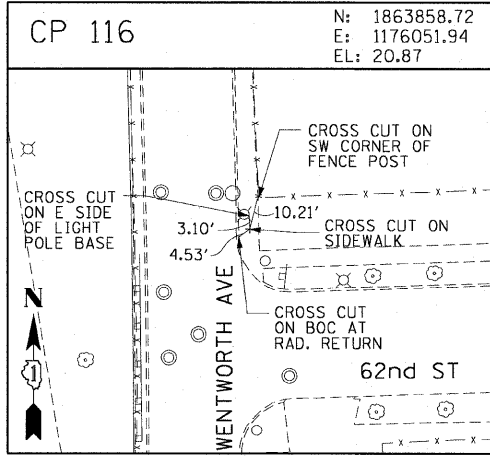
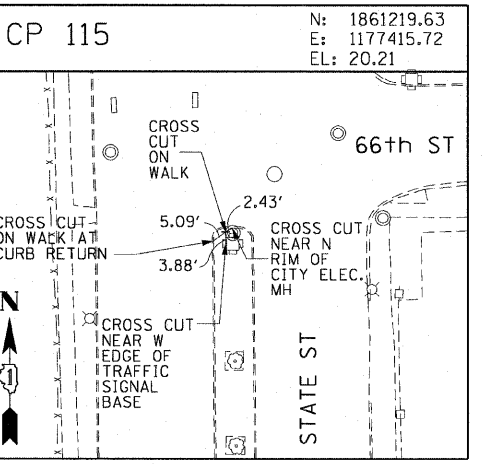
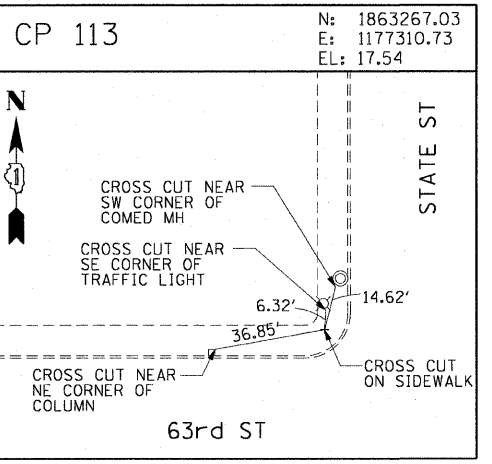
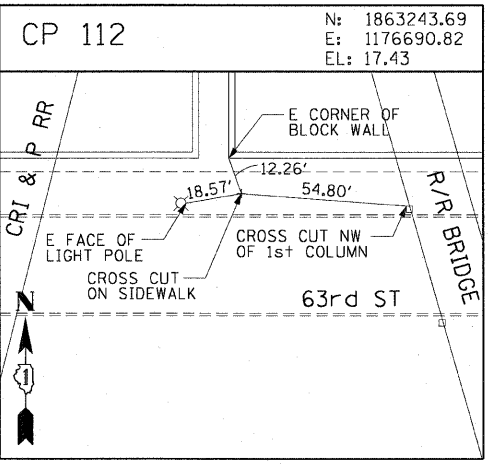
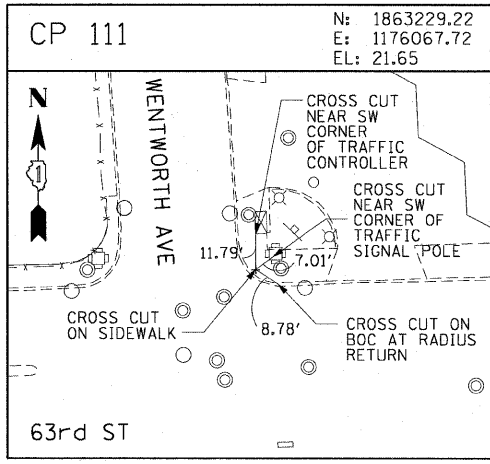
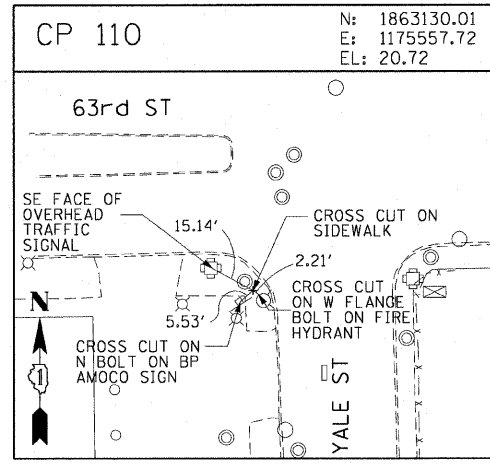
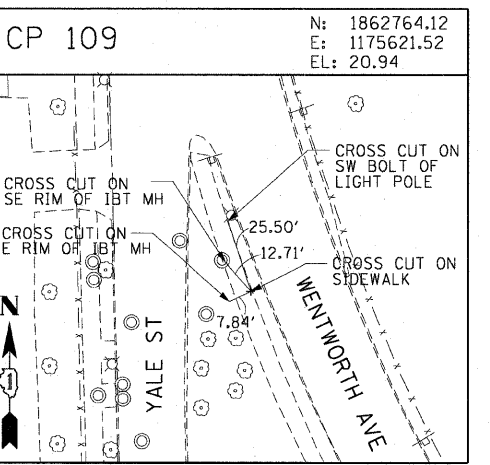
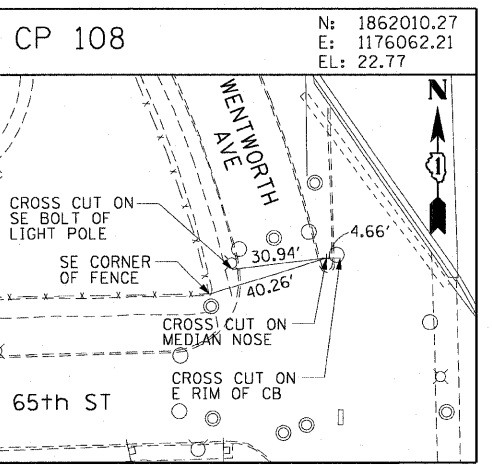
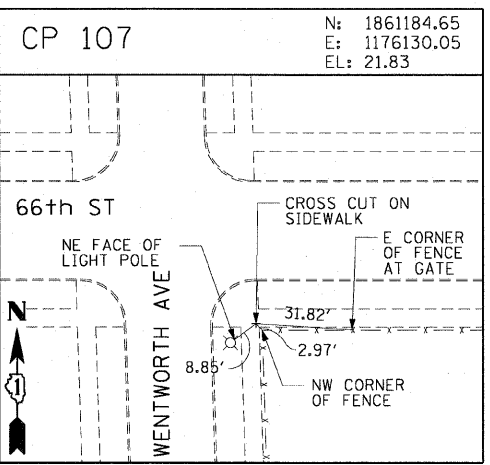
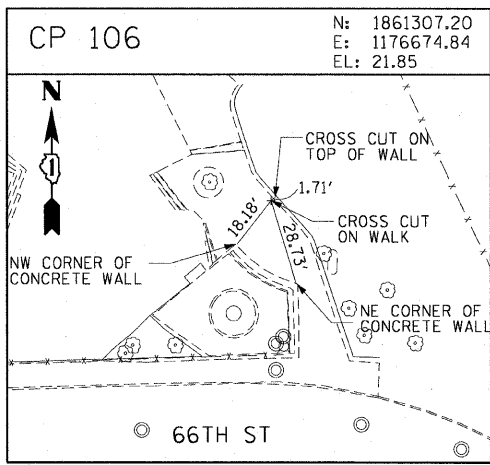
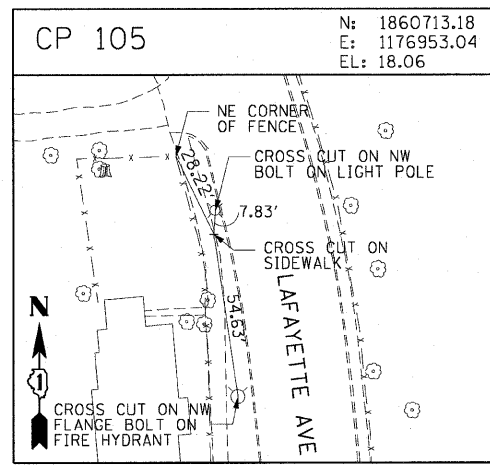
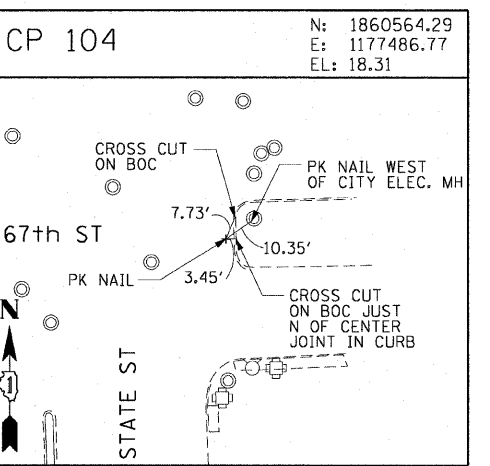
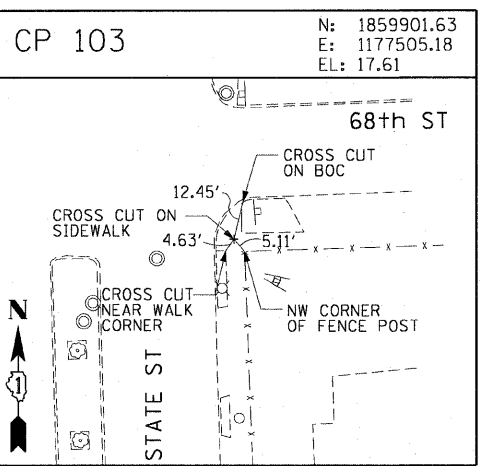
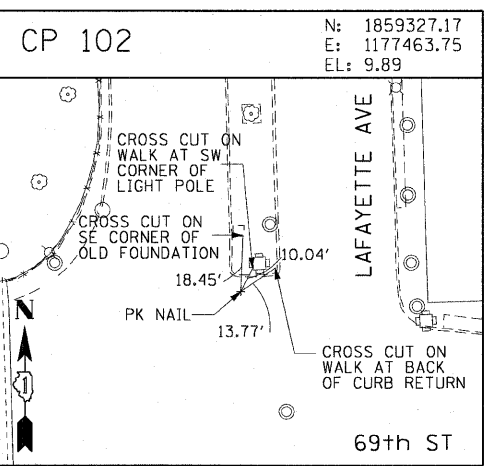
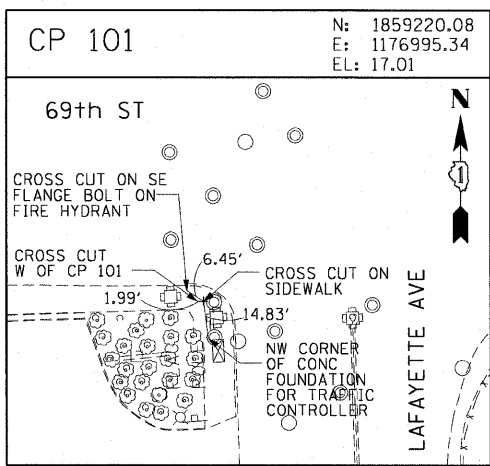
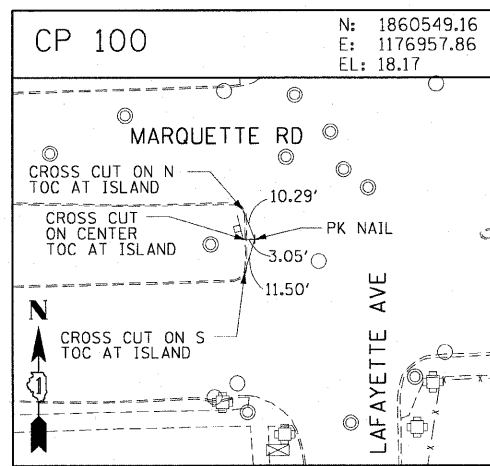


F.A.I. RTE. 90/94	SECTION	COUNTY COOK	TOTAL SHEETS 28	SHEET NO. 10
STA.	TO STA.			
FED. ROAD DIST. NO. 1 ILLINOIS FED. AID PROJECT				
• (2021-922 PT1 & 2122-921 PT1) I-2 62987				



AECOM

REVISIONS	
NAME	DATE

ILLINOIS DEPARTMENT OF TRANSPORTATION
F.A.I. 90/94 (DAN RYAN EXPRESSWAY)
59TH ST TO 47TH ST (SOUTHBOUND KNEE WALLS)

SURVEY TIES AND CONTROL POINTS

SCALE: 1"=30'
DATE: JANUARY 14, 2009

DRAWN BY: MRK
CHECKED BY: JAL

V:\schiff\p201\40468\40468.dwg\128-knee-wall-fence\stn\contract\30x30\0102a.stn 1/13/2009 12:26:24 PM