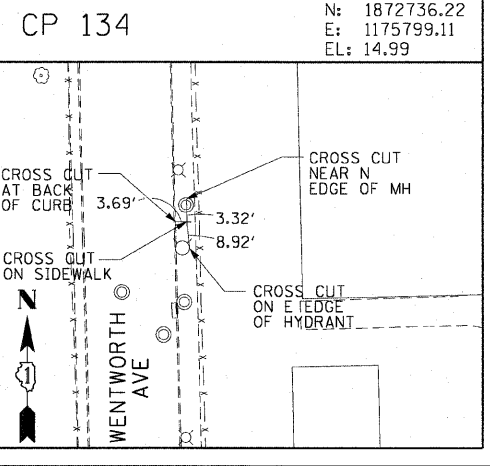
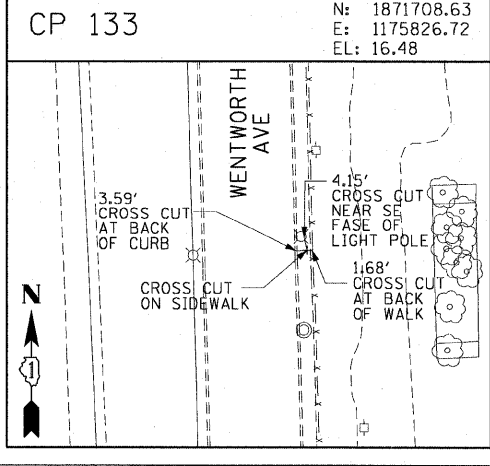
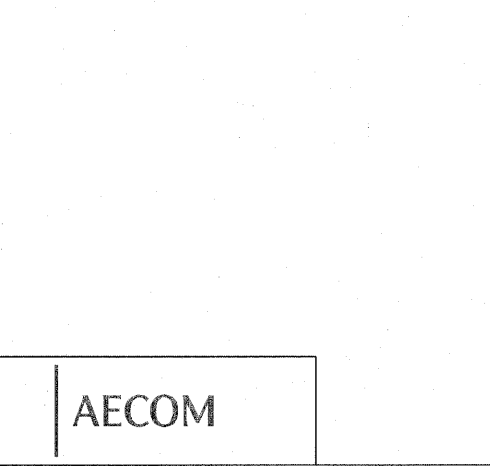
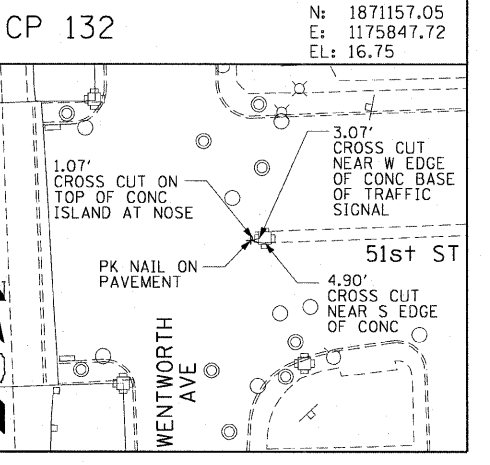
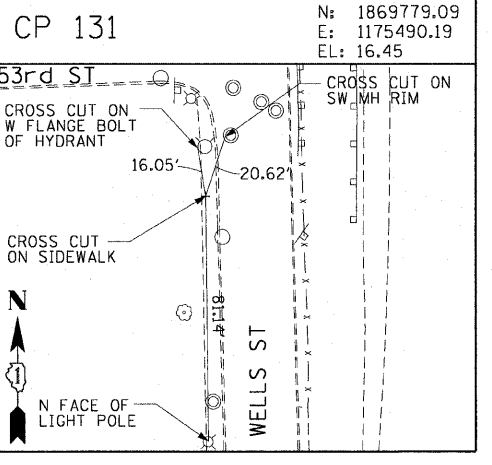
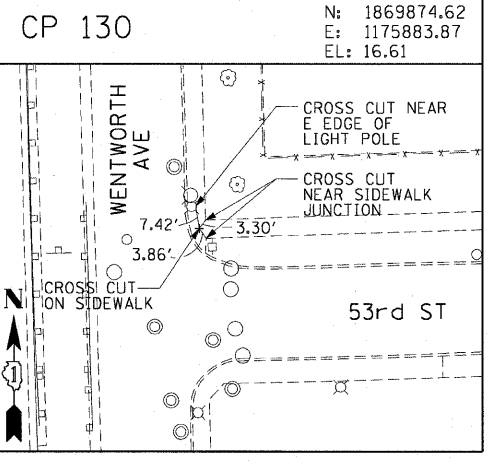
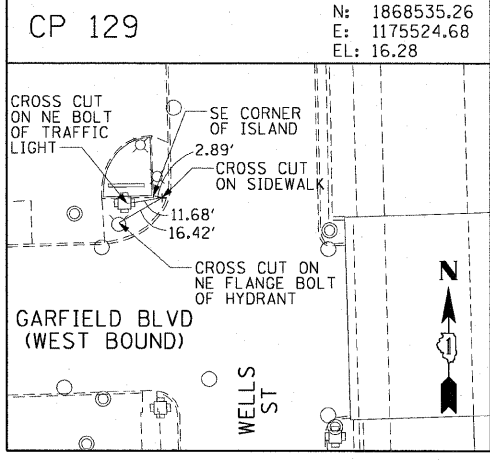
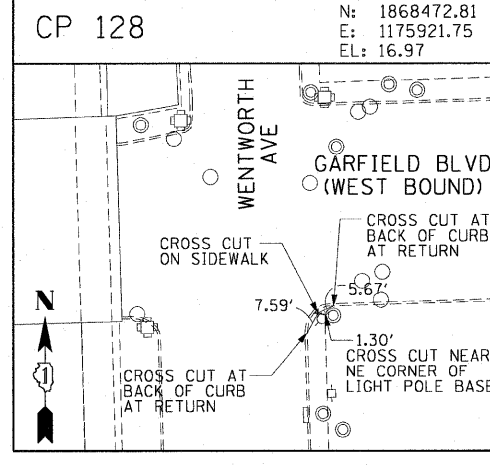
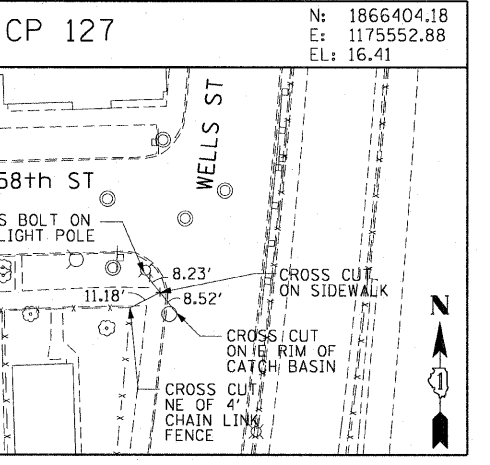
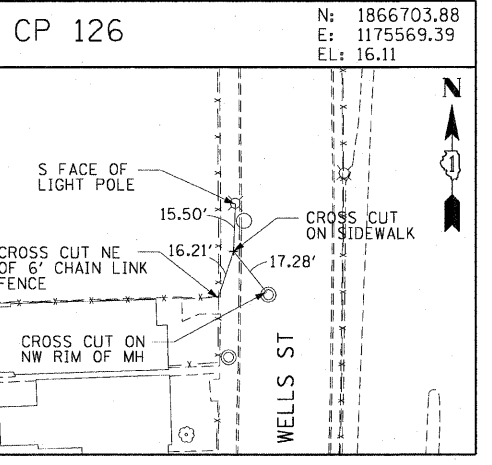
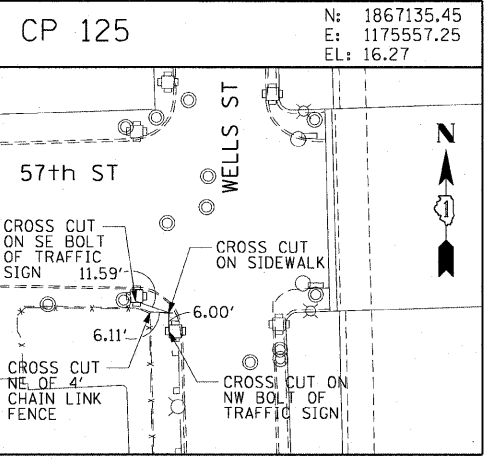
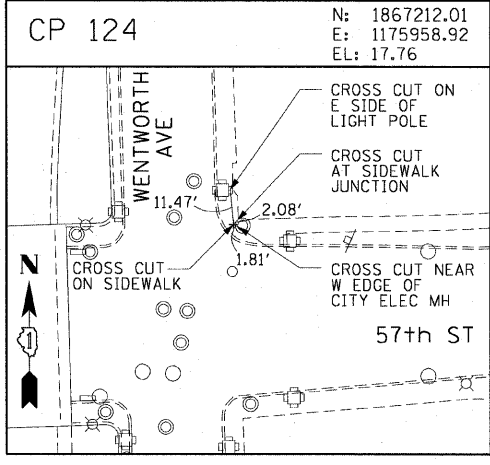
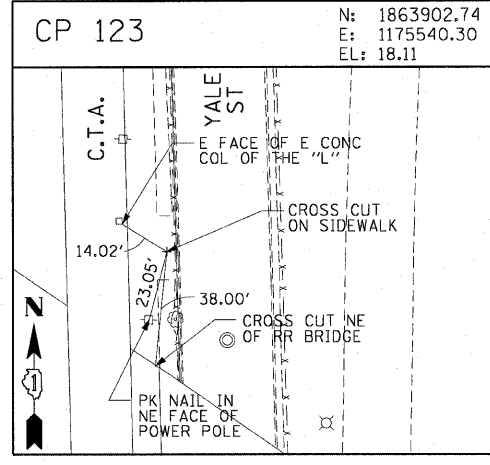
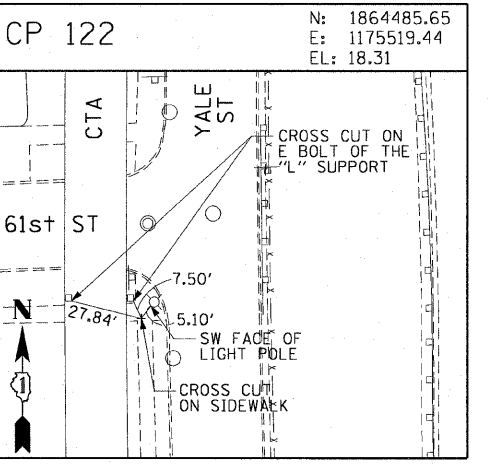
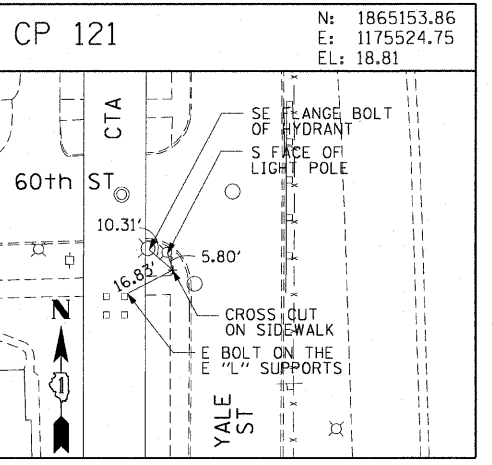
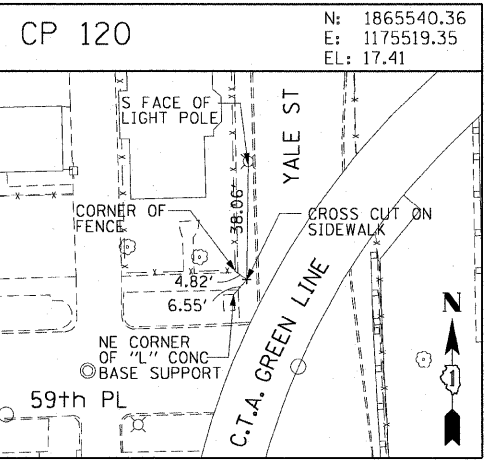
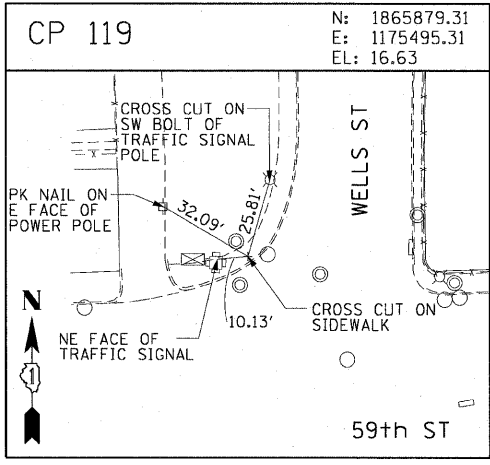
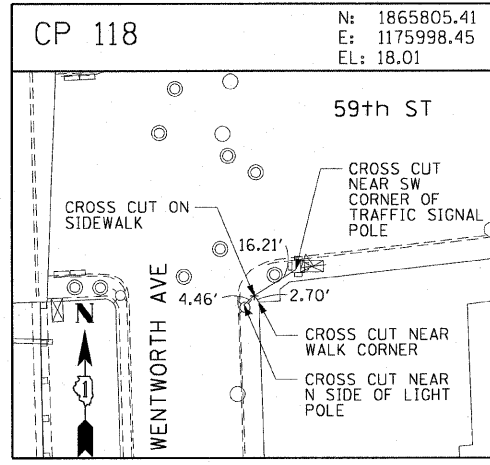


F.A.I. RTE. 90/94	SECTION	COUNTY COOK	TOTAL SHEETS 28	SHEET NO. 11
STA.		TO STA.		
FED. ROAD DIST. NO. 1 ILLINOIS FED. AID PROJECT				
• (2021-922 PT) & 2122-921 PT) 1-2 62987				



REVISIONS	
NAME	DATE

ILLINOIS DEPARTMENT OF TRANSPORTATION  
F.A.I. 90/94 (DAN RYAN EXPRESSWAY)  
59th ST TO 47th ST (SOUTHBOUND KNEE WALLS)

**SURVEY TIES AND CONTROL POINTS**

SCALE: 1"=30'  
DATE: JANUARY 14, 2009

DRAWN BY: MRK  
CHECKED BY: JAL

AECOM

U:\sc\g\p\207\040468\p\0468.ctb\128-knee\_wall\1\_Fence\sh\control\30\1301220317

12/26/09