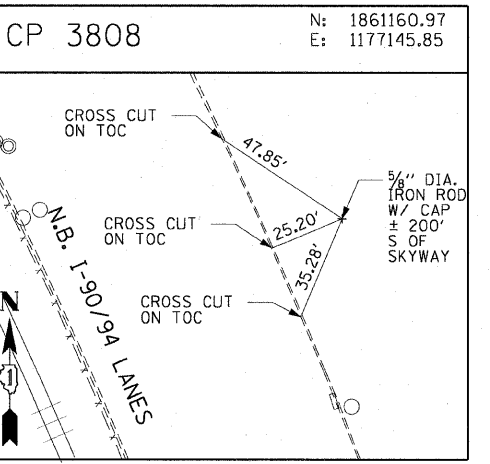
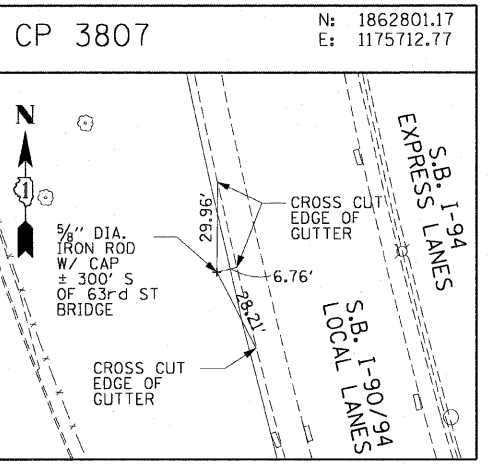
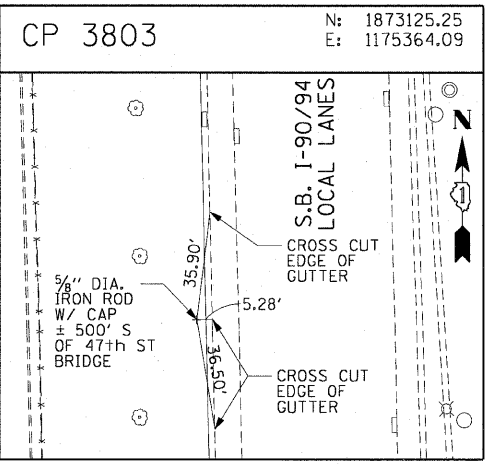
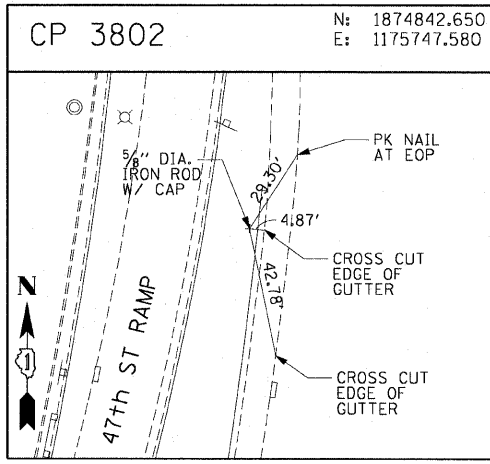
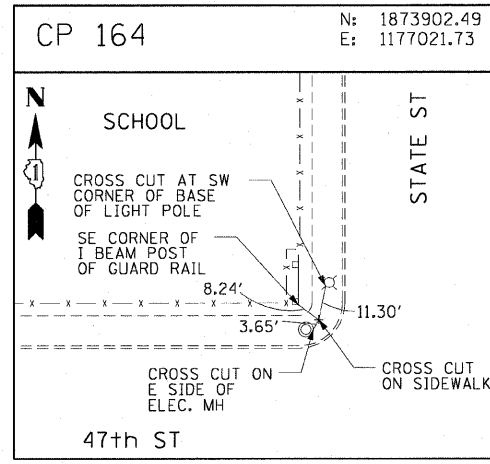
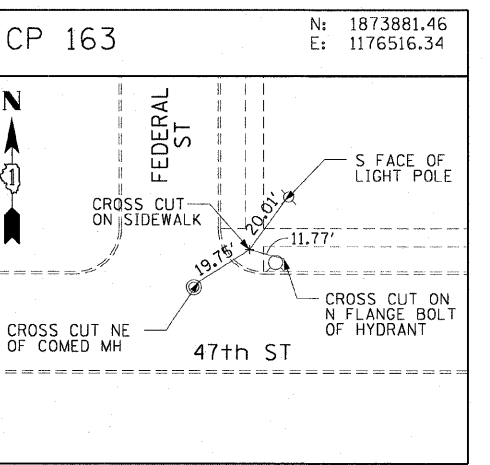
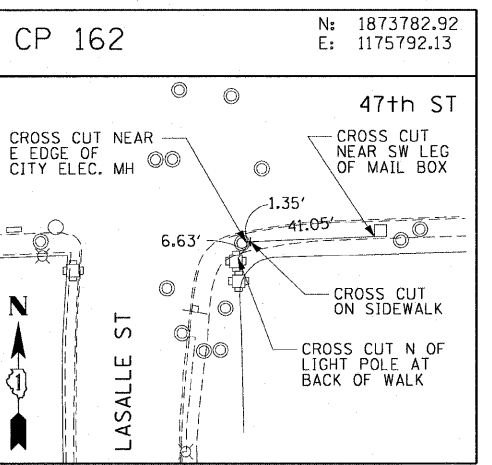
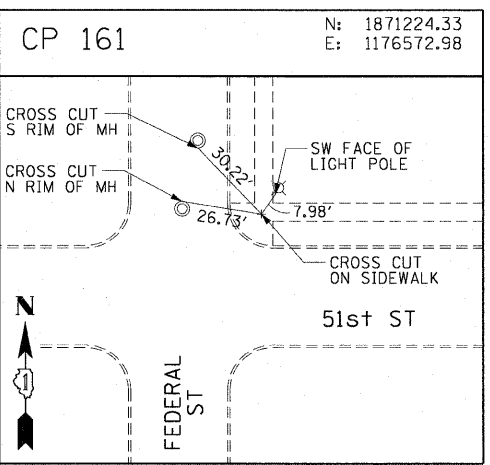
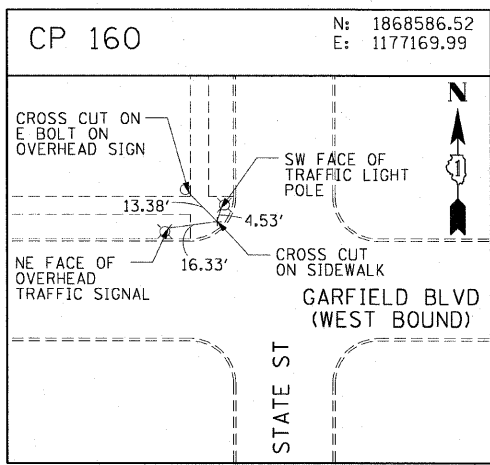
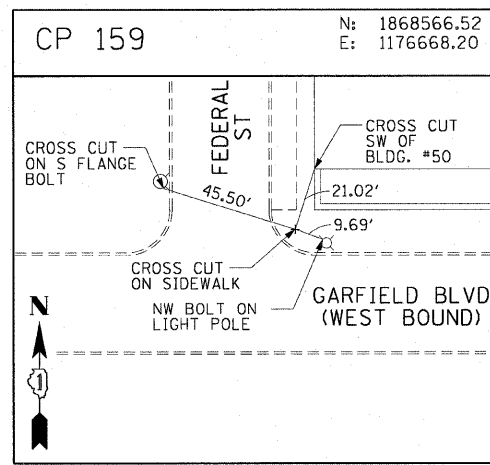
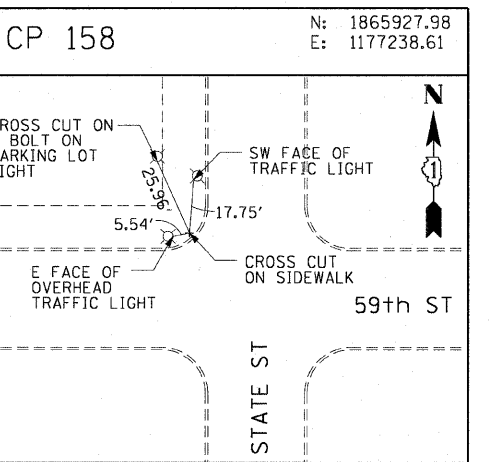
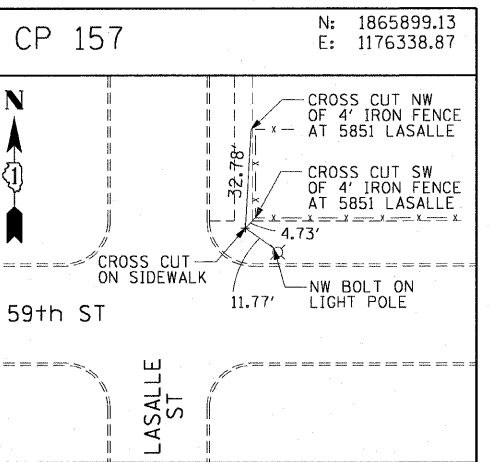
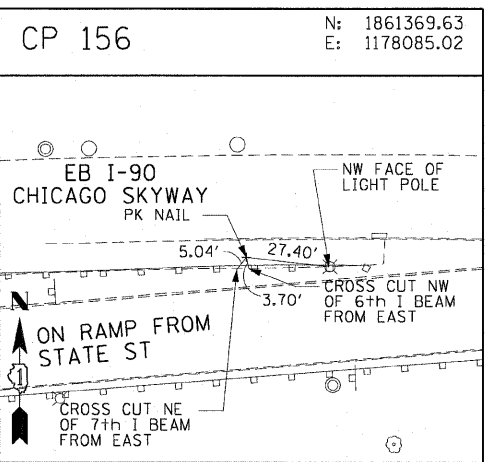
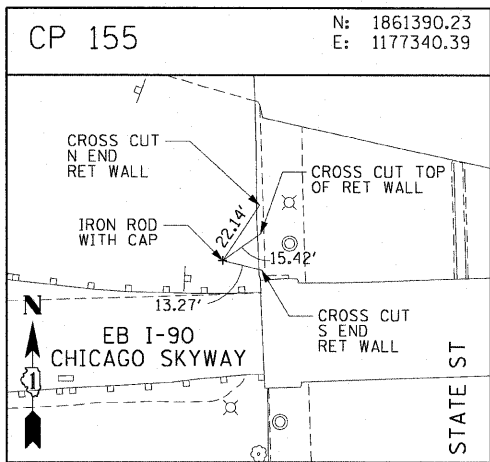
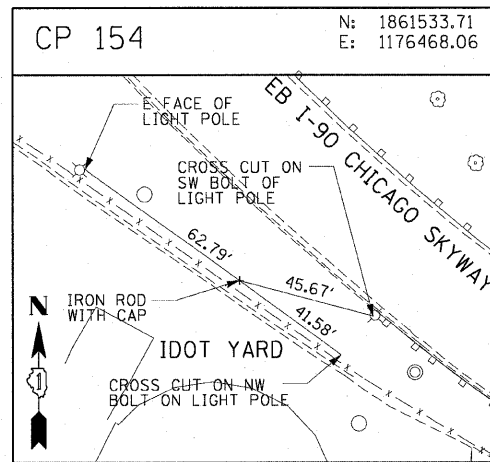


F.A.I. RTE.	SECTION	COUNTY	TOTAL SHEETS	SHEET NO.
90/94		COOK	28	13
STA.	TO STA.			
FED. ROAD DIST. NO. 1	ILLINOIS	FED. AID PROJECT		
• (2021-922 PT) & 2122-921 PT) I-2 62987				



AECOM

REVISIONS	
NAME	DATE

ILLINOIS DEPARTMENT OF TRANSPORTATION
 F.A.I. 90/94 (DAN RYAN EXPRESSWAY)
 59TH ST TO 47TH ST (SOUTHBOUND KNEE WALLS)
 SURVEY TIES AND CONTROL POINTS
 SCALE: 1"=30'
 DATE: JANUARY 14, 2009
 DRAWN BY: MRK
 CHECKED BY: JAL

1/13/2009 12:26:37 PM \\ussdgr\p207\p40468\p40468\civil\28-knee_wall\Ties\SM\control\30cal\301042a.dwg