
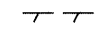

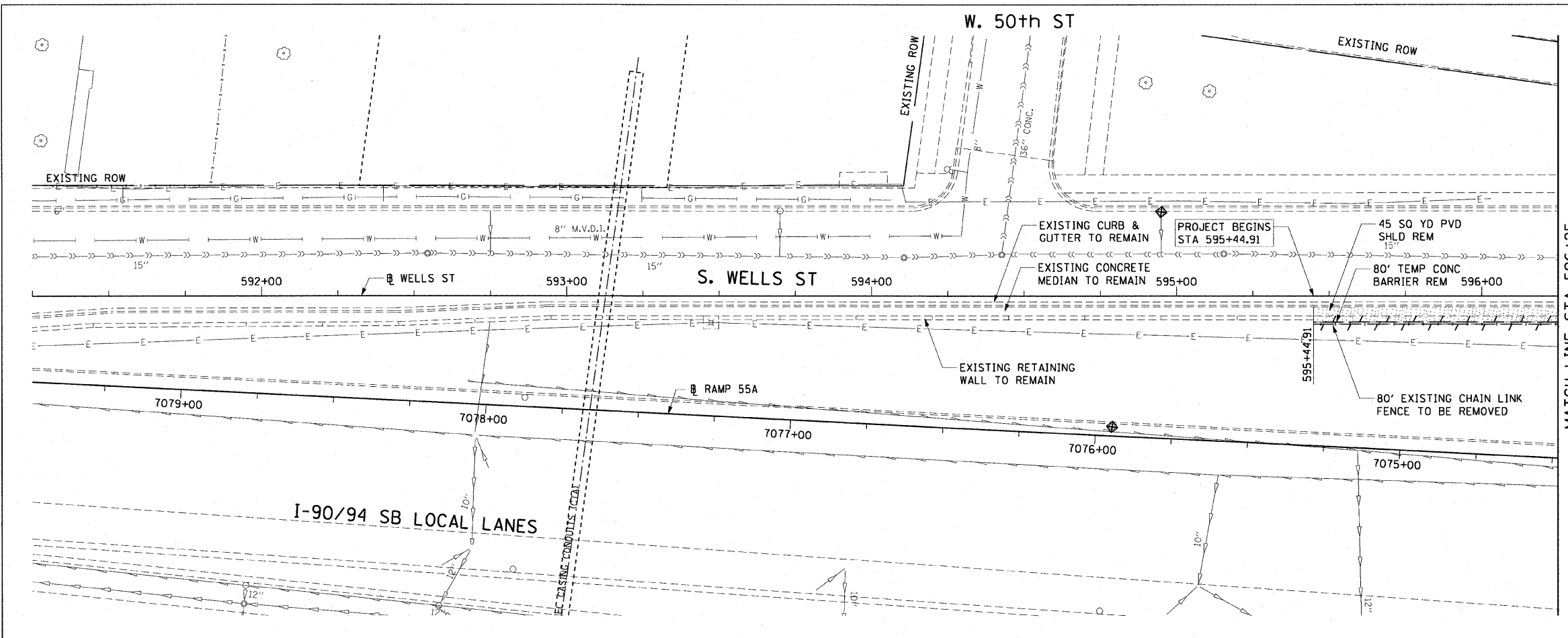


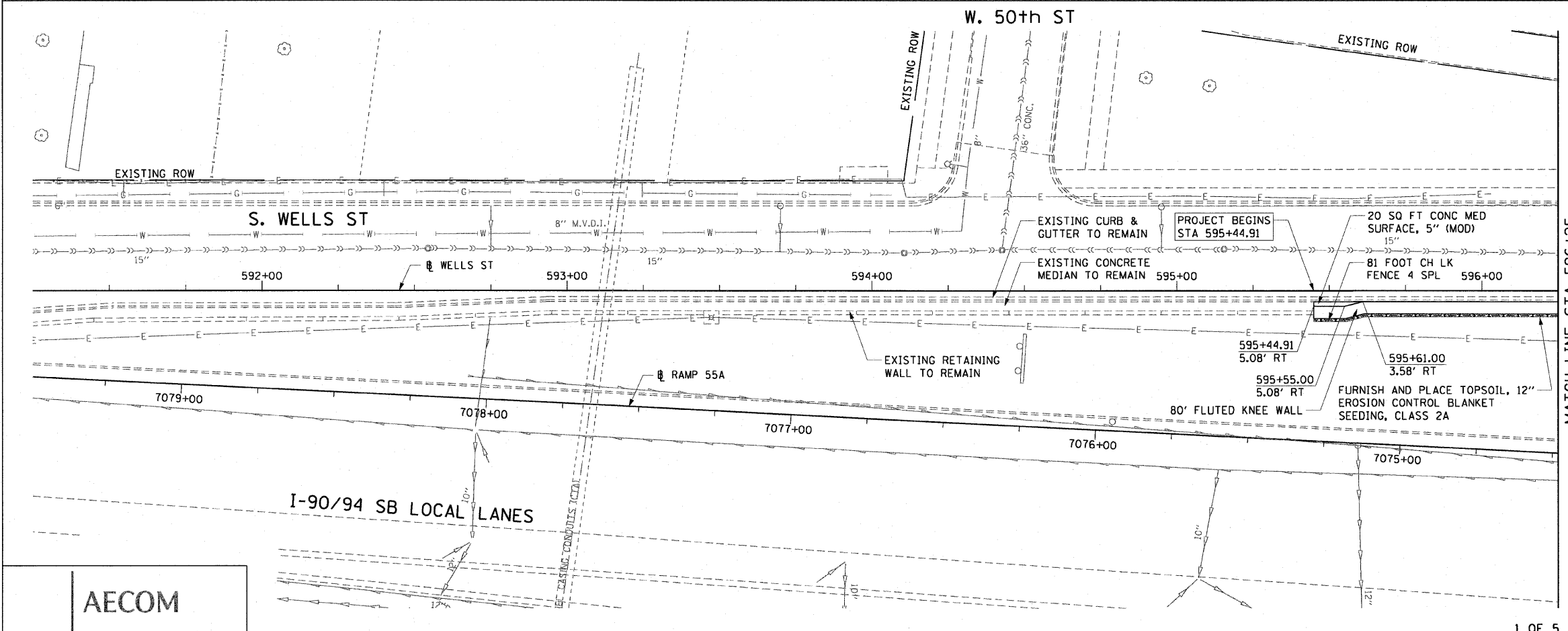
F.A.I. RTE.	SECTION	COUNTY	TOTAL SHEETS	SHEET NO.
90/94		COOK	28	14
STA. 595+44.91		TO STA. 596+25		
FED. ROAD DIST. NO. 1		ILLINOIS		FED. AID PROJECT
				(2021-922 PT1 & 2122-921 PT1) I-2 62987

LEGEND:

-  AREA REMOVALS
-  LINEAR REMOVALS
-  INLET FILTER

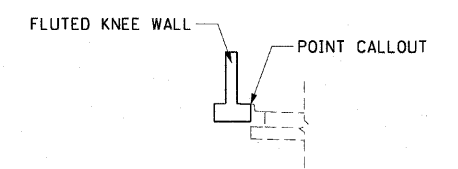


EXISTING CONDITIONS AND REMOVAL  
PROPOSED IMPROVEMENTS



NOTES:

1. SEE STRUCTURAL DETAIL FOR FLUTED KNEE WALL DETAILS.
2. ALL POINT CALLOUTS ARE TAKEN AT THE EDGE OF THE KNEE WALL BASE (SEE BELOW).
3. SEE ROADWAY DETAILS FOR CONCRETE MEDIAN DETAIL.



MATCH LINE STA 596+25

REVISIONS	
NAME	DATE

ILLINOIS DEPARTMENT OF TRANSPORTATION  
F.A.I. 90/94 (DAN RYAN EXPRESSWAY)  
59TH ST TO 47TH ST (SOUTHBOUND KNEE WALLS)  
**EXISTING AND PROPOSED ROADWAY PLANS  
WELLS STREET**

SCALE: 1"=20'  
DATE: JANUARY 14, 2009

DRAWN BY: NJH  
CHECKED BY: RMG