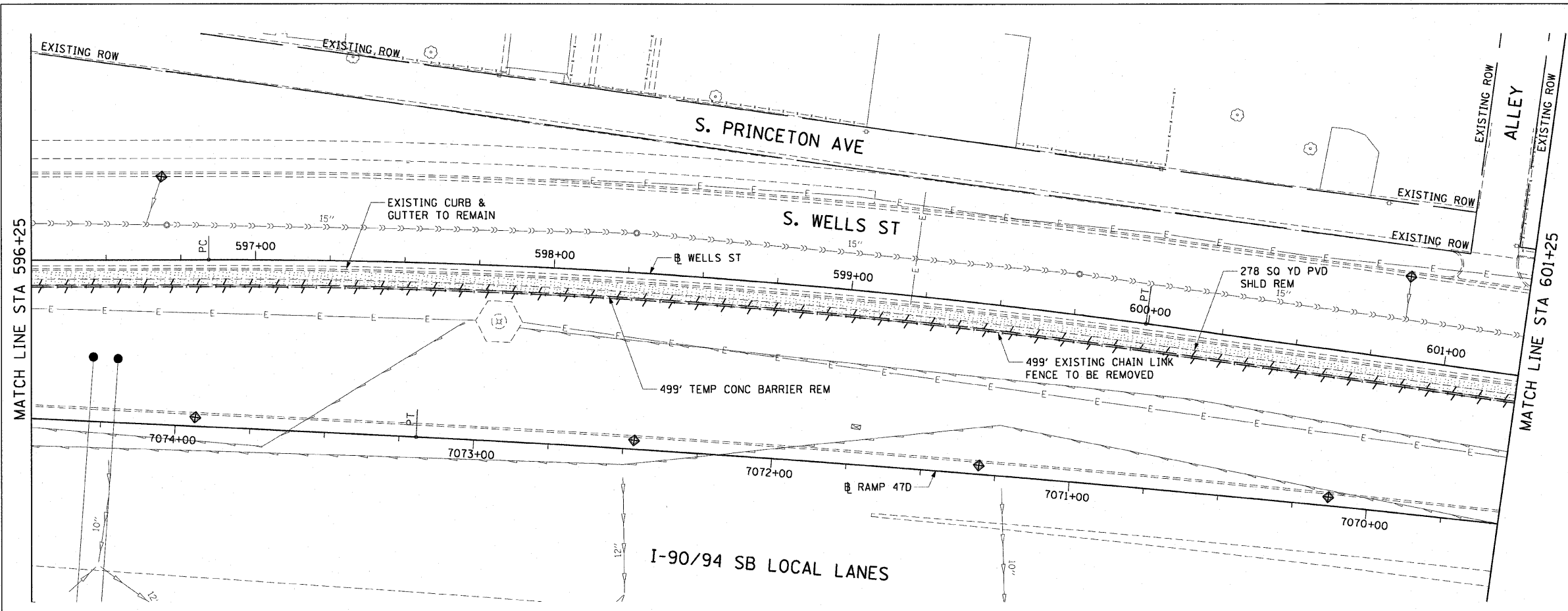


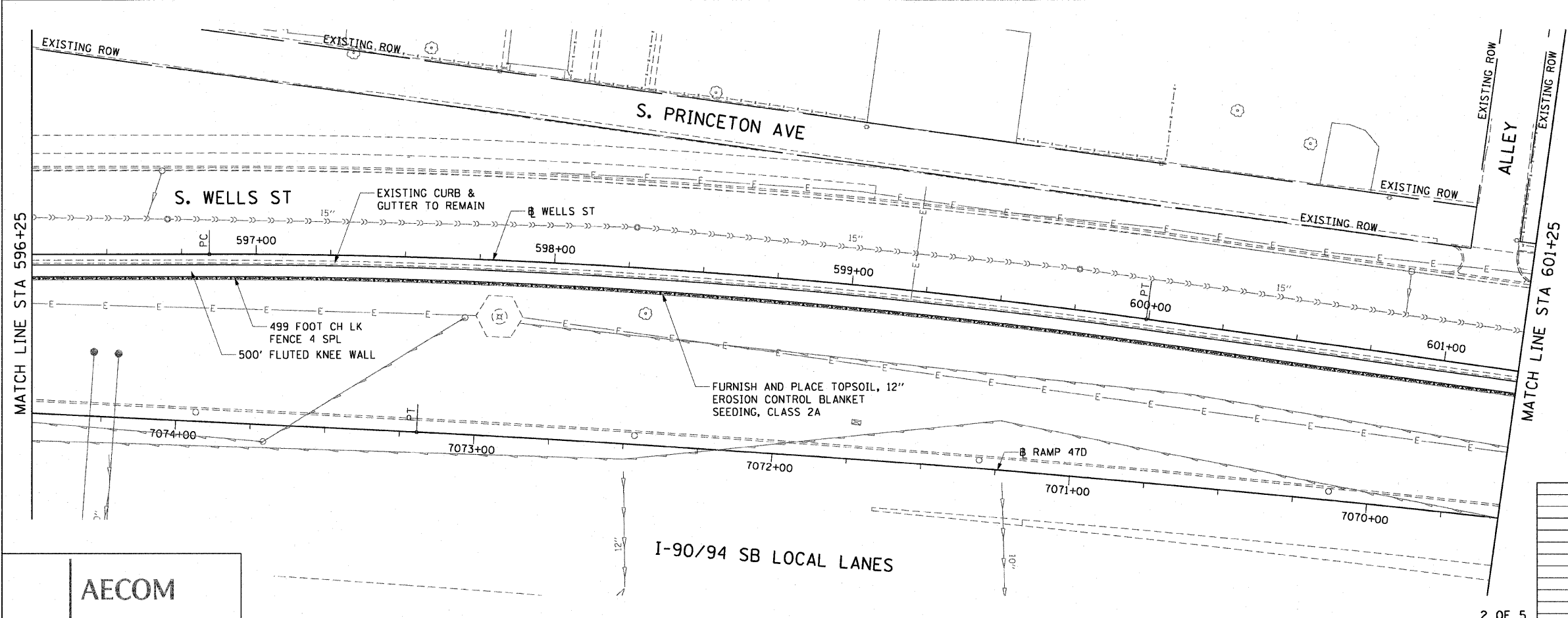
| | | | | |
|-----------------------|---------|---------------------------|--------------|---|
| F.A.I. RTE. | SECTION | COUNTY | TOTAL SHEETS | SHEET NO. |
| 90/94 | | COOK | 28 | 15 |
| STA. 596+25 | | TO STA. 601+25 | | |
| FED. ROAD DIST. NO. 1 | | ILLINOIS FED. AID PROJECT | | |
| | | | | (2021-922 PT1 & 2122-921 PT1) I-2 62987 |



- LEGEND:
- AREA REMOVALS
 - LINEAR REMOVALS
 - INLET FILTER



EXISTING CONDITIONS AND REMOVAL
PROPOSED IMPROVEMENTS



- NOTES:
1. SEE STRUCTURAL DETAIL FOR FLUTED KNEE WALL DETAILS.
 2. ALL POINT CALLOUTS ARE TAKEN AT THE EDGE OF THE KNEE WALL BASE.

| REVISIONS | |
|-----------|------|
| NAME | DATE |
| | |
| | |
| | |
| | |
| | |
| | |
| | |
| | |
| | |
| | |

ILLINOIS DEPARTMENT OF TRANSPORTATION
F.A.I. 90/94 (DAN RYAN EXPRESSWAY)
59TH ST TO 47TH ST (SOUTHBOUND KNEE WALLS)
EXISTING AND PROPOSED ROADWAY PLANS
WELLS STREET

SCALE: 1"=20'
DATE: JANUARY 14, 2009

DRAWN BY: NJH
CHECKED BY: RMG

AECOM

1/13/2009 12:26:43 PM \\uscity01\207\40468\40468\civil\28-knee_walls\1\encalst\contract\30\p30022a.rvt