
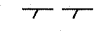
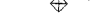
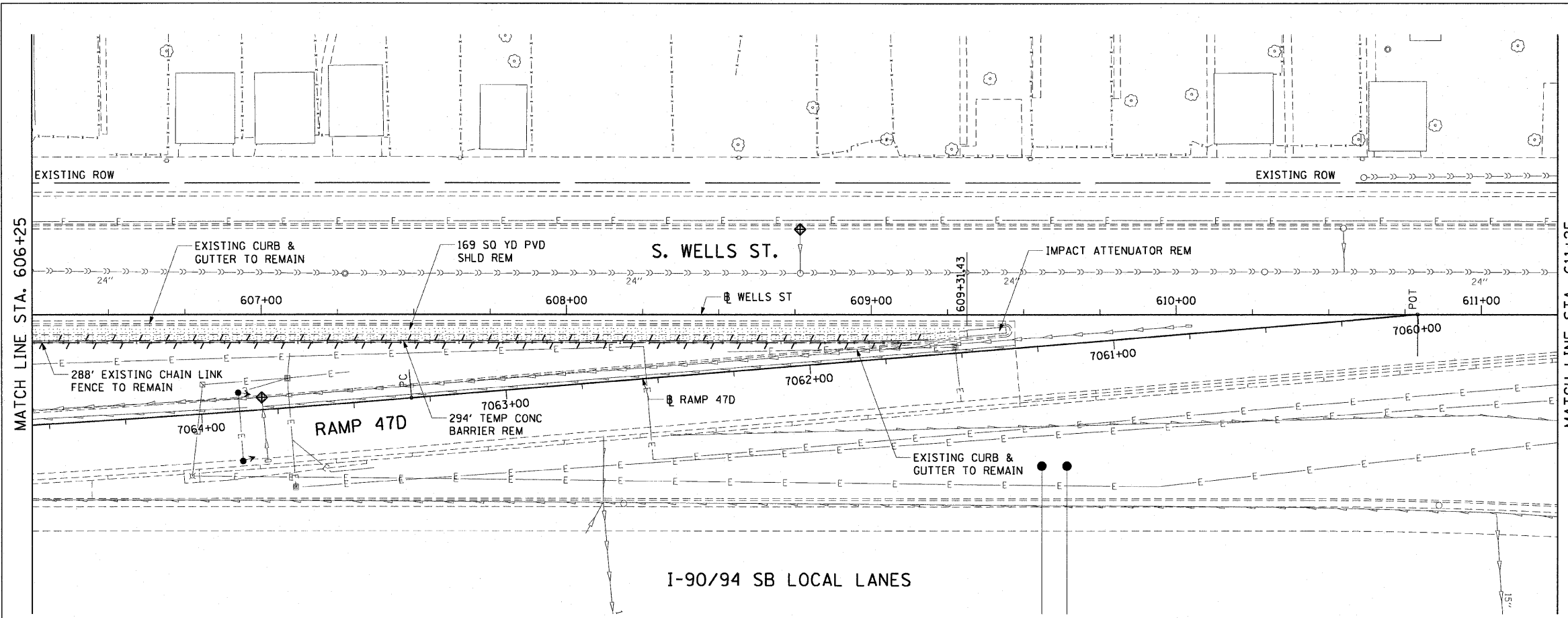
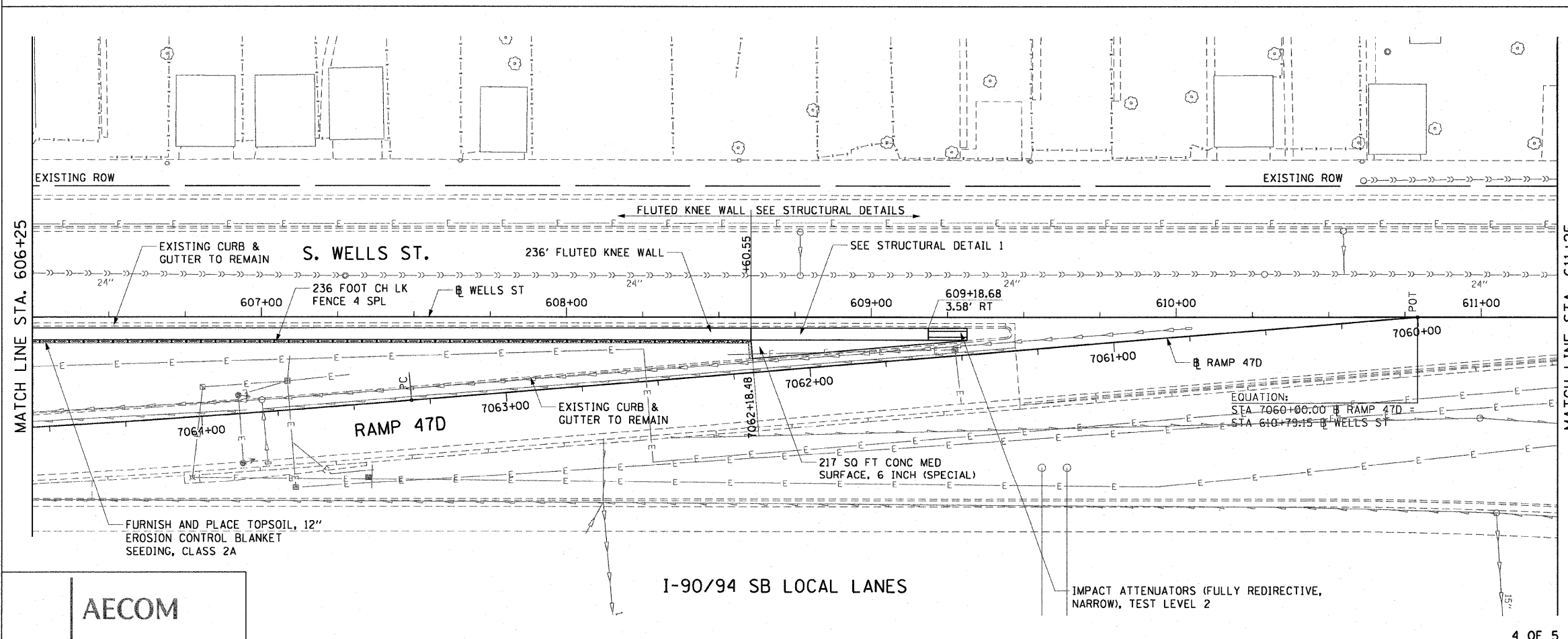


LEGEND:

-  AREA REMOVALS
-  LINEAR REMOVALS
-  INLET FILTER



EXISTING CONDITIONS AND REMOVAL
PROPOSED IMPROVEMENTS



NOTES:

1. SEE STRUCTURAL DETAIL FOR FLUTED KNEE WALL DETAILS.
2. ALL POINT CALLOUTS ARE TAKEN AT THE EDGE OF THE KNEE WALL BASE.

REVISIONS	
NAME	DATE

ILLINOIS DEPARTMENT OF TRANSPORTATION
F.A.I. 90/94 (DAN RYAN EXPRESSWAY)
59TH ST TO 47TH ST (SOUTHBOUND KNEE WALLS)
**EXISTING AND PROPOSED ROADWAY PLANS
WELLS STREET**

SCALE: 1"=20'
DATE: JANUARY 14, 2009

DRAWN BY: NJH
CHECKED BY: RMG

AECOM

V:\schjff\p201\p40468\p40468\civil\28-knee-wall_fence\contract\30\pp\30042a.dwg 1/13/2009 12:26:44 PM