
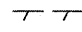

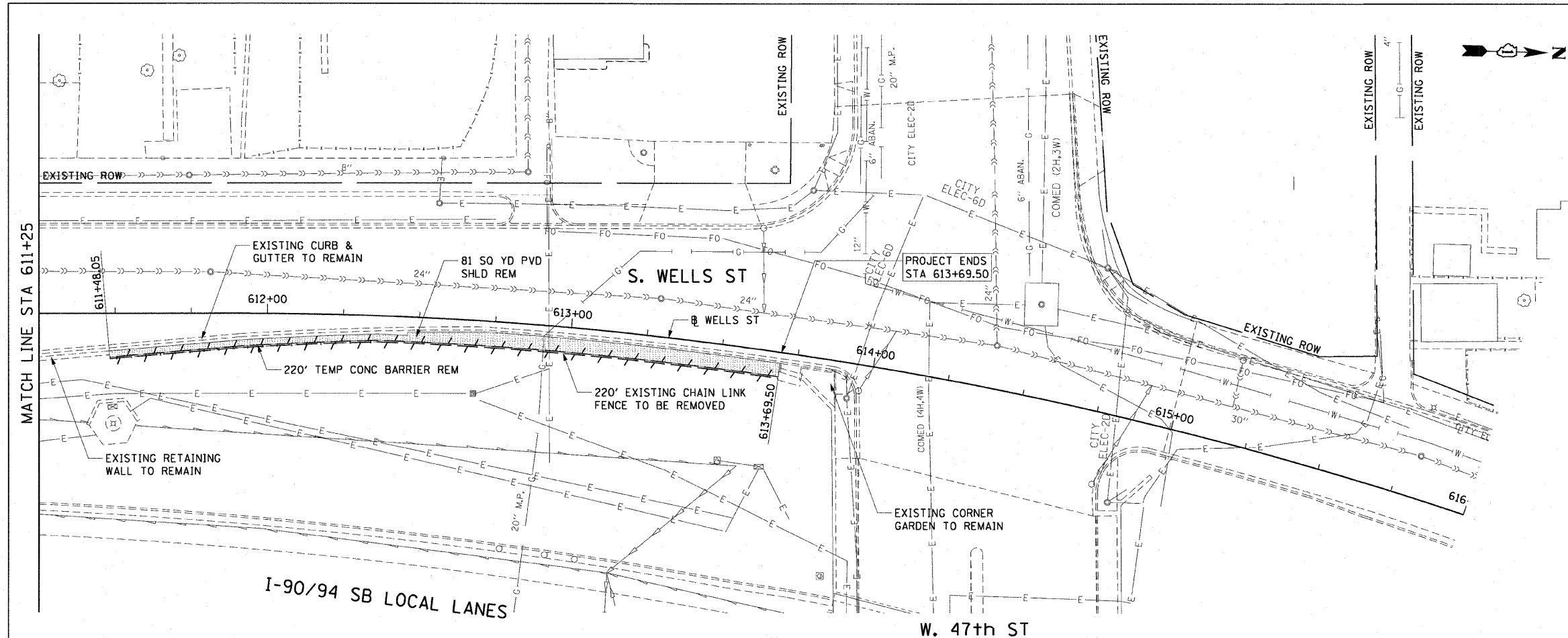


F.A.I. RTE.	SECTION	COUNTY	TOTAL SHEETS	SHEET NO.
90/94		COOK	28	18
STA. 611+25		TO STA. 613+69.50		
FED. ROAD DIST. NO. 1 ILLINOIS FED. AID PROJECT				
• (2021-922 PT1 & 2122-921 PT1) 1-2 62987				

LEGEND:

-  AREA REMOVALS
-  LINEAR REMOVALS
-  INLET FILTER



EXISTING CONDITIONS AND REMOVAL
PROPOSED IMPROVEMENTS

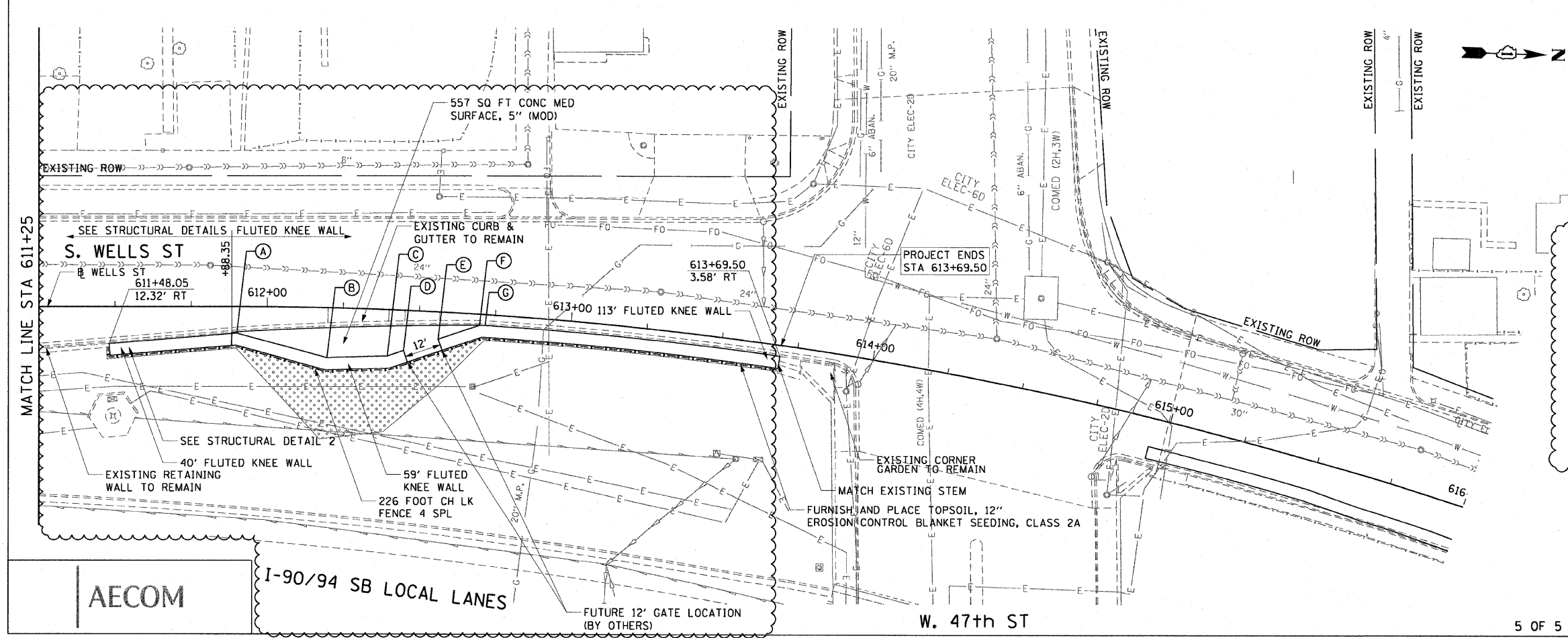
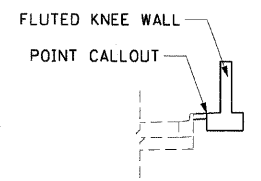
NOTES:

1. SEE STRUCTURAL DETAILS FOR FLUTED KNEE WALL DETAILS.
2. ALL POINT CALLOUTS ARE TAKEN AT THE EDGE OF THE KNEE WALL BASE.
3. SEE ROADWAY DETAILS FOR CONCRETE MEDIAN AND CONCRETE CURB DETAILS.
4. HAND FINISH THE CONCRETE MEDIAN SURFACE AT THE FLUTED KNEE WALL OPENING (STA 612+98.09) SO THE GRADE OF THE SURFACE IS ZERO PERCENT.
5. SEE TABLE BELOW FOR POINT CALLOUT INFORMATION

POINT CALLOUT INFORMATION

PT	STATION	OFFSET	ELEVATION
(A)	611+90.00	8.83' RT	*
(B)	612+20.00	16.64' RT	16.85
(C)	612+40.00	15.47' RT	16.89
(D)	612+45.34	13.44' RT	16.86
(E)	612+56.62	9.06' RT	16.79
(F)	612+70.00	3.69' RT	*
(G)	612+71.85	3.58' RT	*

* ELEVATION IS EQUAL TO THE TOP OF CURB ELEVATION.



FLUTED KNEE WALL
POINT CALLOUT

REVISIONS	
NAME	DATE
KNEEWALL CHANGE	5/15/09

ILLINOIS DEPARTMENT OF TRANSPORTATION
F.A.I. 90/94 (DAN RYAN EXPRESSWAY)
59TH ST TO 47TH ST (SOUTHBOUND KNEE WALLS)
EXISTING AND PROPOSED ROADWAY PLANS
WELLS STREET

SCALE: 1"=20'
DATE: JANUARY 14, 2009
DRAWN BY: NJH
CHECKED BY: RMG

AECOM

P:\40468\civil\1128-Knee-wall-Fence\contract 30\pp300052a.dwg 9/28/09 9:28:56 AM 5/15/2009