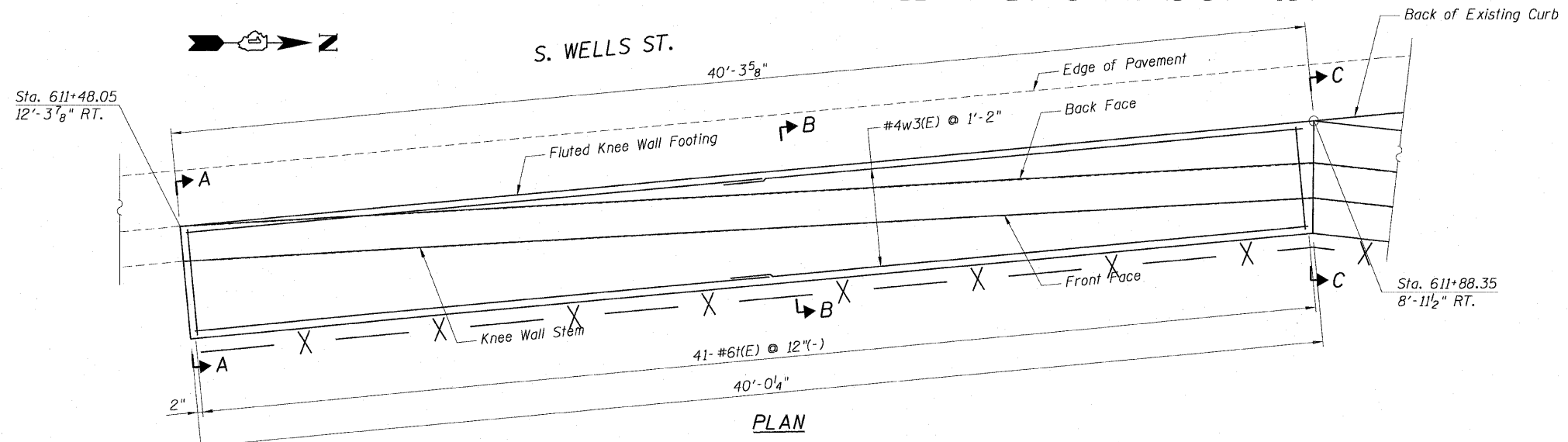
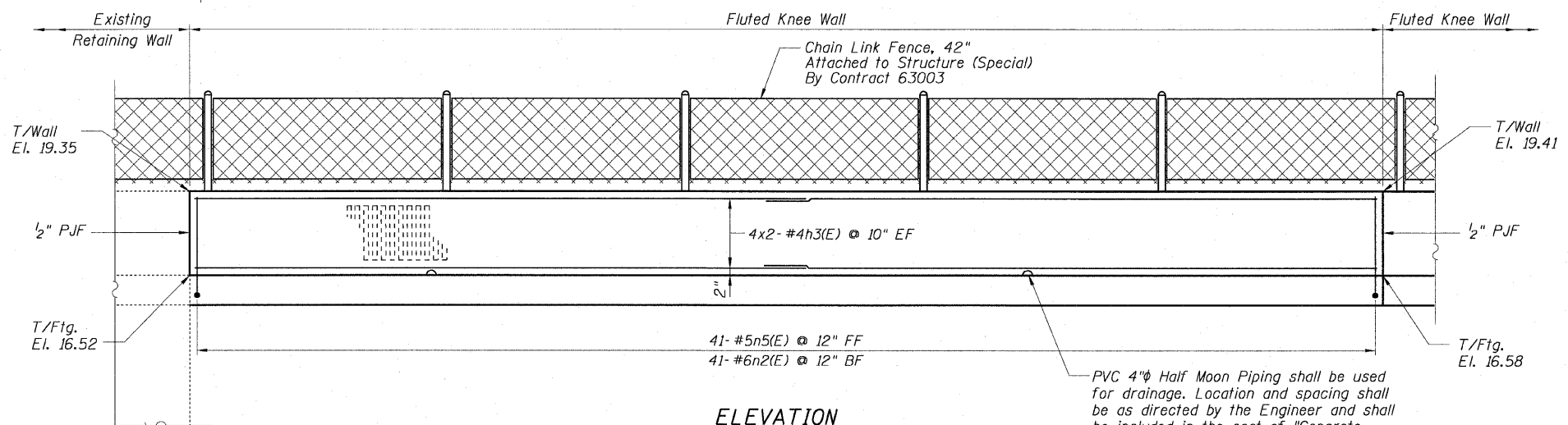


STATE OF ILLINOIS  
DEPARTMENT OF TRANSPORTATION

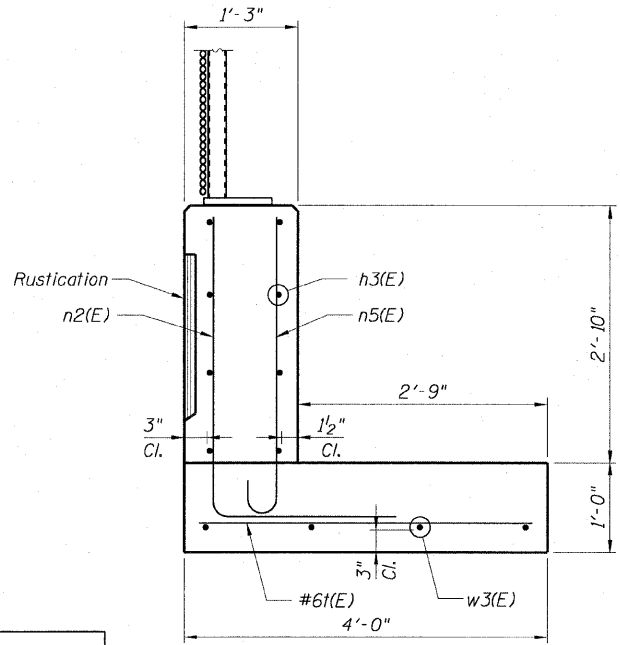
F.A.I. RTE.	SECTION	COUNTY	TOTAL SHEETS	SHEET NO.
90/94		COOK	28	24
STA.		TO STA.		
FED. ROAD DIST. NO. 1		ILLINOIS FED. AID PROJECT		
		• (2021-922 PT1 & 2122-921 PT1) 1-2 <b>62987</b>		



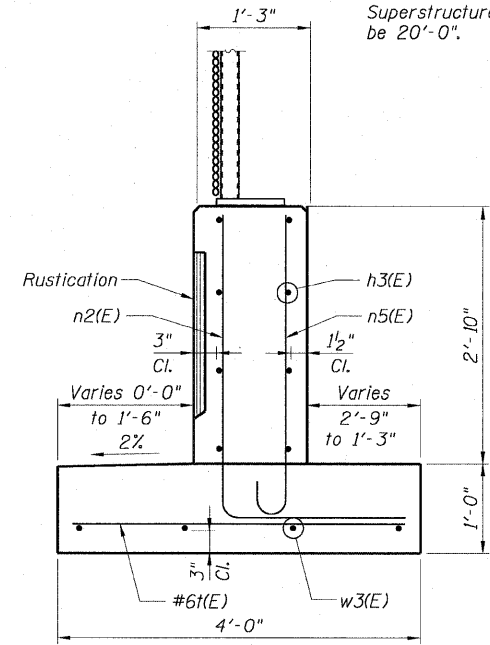
PLAN



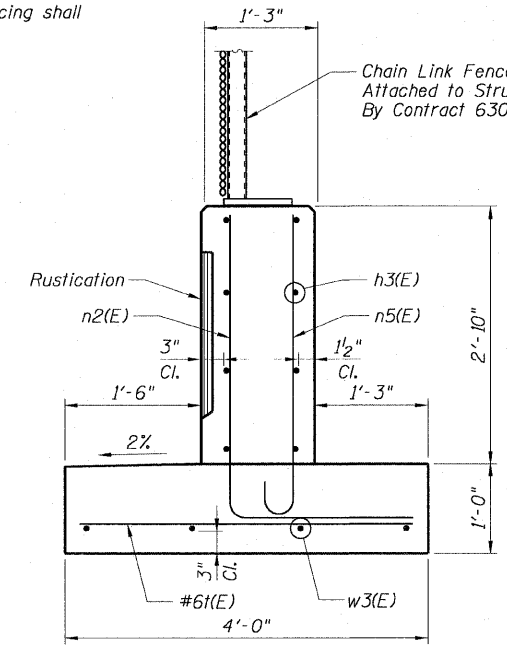
ELEVATION



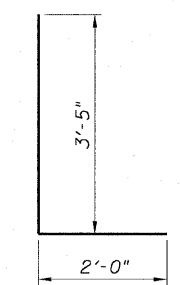
SECTION A-A



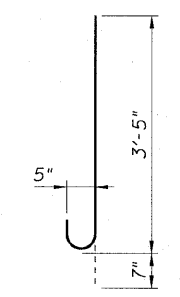
SECTION B-B



SECTION C-C



BAR n2(E)



BAR n5(E)

**BILL OF MATERIAL**

Bar	No.	Size	Length	Shape
h3(E)	16	#4	21'-0"	—
n2(E)	41	#6	5'-5"	U
n5(E)	41	#5	4'-0"	U
l(E)	41	#6	3'-8"	—
w3(E)	8	#4	21'-0"	—

**NOTES:**

- For location of Fluted Knee Wall, see Civil Drawings. Stations and offset are measured from the @ S. Wells St. to the Wells St. edge of the footing.
- Reinforcement bar shall conform to the requirements of AASHTO M-31 or M-322 Grade 60.
- Concrete:  $f'c = 3500$  psi
- Fluted knee wall shall be paid for per foot as "Fluted Knee Wall". Included in the cost of "Fluted Knee Wall" shall be "Concrete Superstructures" stem, "Concrete Structures" foundation, reinforcement bars (epoxy coated), rustication finish, protective coat and expansion joint filler and sealing compound.
- At locations where Fluted Knee Wall abuts a rigid structure, a 1/2" thick preformed expansion joint filler (PJF) conforming to the shape of the structure shall be installed between the wall and the structure. 3/4" PJF shall be installed where Fluted Knee Wall footing abuts curb and gutter. The cost shall be included in "Concrete Structures".
- A protective coat shall be applied according to Section 503.19 of the Standard Specifications to the top of stem and to the face of stem and top of footing on the Frontage Road side of the Knee Wall for Structural Detail 2.
- Chain Link Fence will not be paid for in this Contract, but shall be furnished and installed in Contract 63003.
- For dimensions and details not shown in the sections, see Standard Knee Wall Details Sheet S1.
- For n2(E) details, see Sheet S1.
- Minimum lap for #4 bars shall be 1'-8".
- BF = Back Face  
EF = Each Face  
FF = Front Face

Sheet S3 of 3

REVISIONS	
NAME	DATE

ILLINOIS DEPARTMENT OF TRANSPORTATION  
F.A.I. 90/94 (DAN RYAN EXPRESSWAY)  
59TH ST TO 47TH ST (SOUTHBOUND KNEE WALLS)  
**STRUCTURAL DETAIL 2**  
47TH STREET STEM TRANSITION  
STA. 611+48.05 TO STA. 611+88.32  
WELLS STREET  
SCALE: None DRAWN BY: CHD  
DATE: JANUARY 14, 2009 CHECKED BY: MJP

AECOM

12/26/08 PM 12:26:48 PM 1/13/2009 12:26:48 PM