

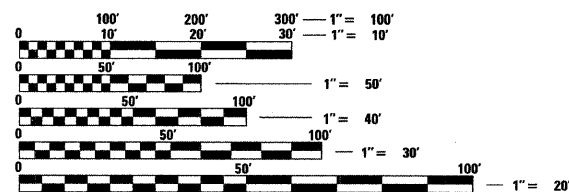
INDEX OF SHEETS

- 1 COVER SHEET
- 2 GENERAL NOTES AND UTILITY CONTACTS
- 3 SUMMARY OF QUANTITIES
- 4 STANDARD TRAFFIC SIGNAL DESIGN DETAILS - SHEET 1 OF 4
- 5 STANDARD TRAFFIC SIGNAL DESIGN DETAILS - SHEET 2 OF 4
- 6 STANDARD TRAFFIC SIGNAL DESIGN DETAILS - SHEET 3 OF 4
- 7 STANDARD TRAFFIC SIGNAL DESIGN DETAILS - SHEET 4 OF 4
- 8 TRAFFIC SIGNAL INSTALLATION PLAN
- 9 SCHEDULE OF QUANTITIES, CABLE PLAN, AND PHASE DESIGNATION DIAGRAM
- 10-12 TRAFFIC SIGNAL INTERCONNECT PLANS
- 13 TRAFFIC SIGNAL INTERCONNECT SCHEMATIC AND SCHEDULE OF QUANTITIES
- 14 MAST ARM MOUNTED STREET SIGNS
- 15 PAVEMENT MARKING PLAN
- 16 MISCELLANEOUS DETAILS

VILLAGE OF ORLAND PARK -
DIRECTOR OF PUBLIC WORKS
14700 SOUTH RAVINIA AVENUE
ORLAND PARK, ILLINOIS 60462
(708) 403-6357
CONTACT: PETER CASEY

ENGINEER:
SEC GROUP, INC.
323 ALANA DRIVE
NEW LENOX, ILLINOIS 60451
(815) 462-9324
CONTACTS:
T. SCOTT CREECH, P.E. -
PROJECT ENGINEER

SURVEYOR:
SEC SURVEYING
323 ALANA DRIVE
NEW LENOX, ILLINOIS 60451
(815) 462-9324
CONTACT:
MILAN DOBROSAVLJEVIC, P.L.S. -
PROJECT MANAGER
FRANK FUNK, S.I.T. -
PROJECT SURVEYOR



FULL SIZE PLANS HAVE BEEN PREPARED USING STANDARD ENGINEERING SCALES. REDUCED SIZED PLANS WILL NOT CONFORM TO STANDARD SCALES. IN MAKING MEASUREMENTS ON REDUCED PLANS, THE ABOVE SCALES MAY BE USED.

J.U.L.I.E.
JOINT UTILITY LOCATING INFORMATION FOR EXCAVATION
1-800-892-0123
OR 811

CONTRACT NO. 63050

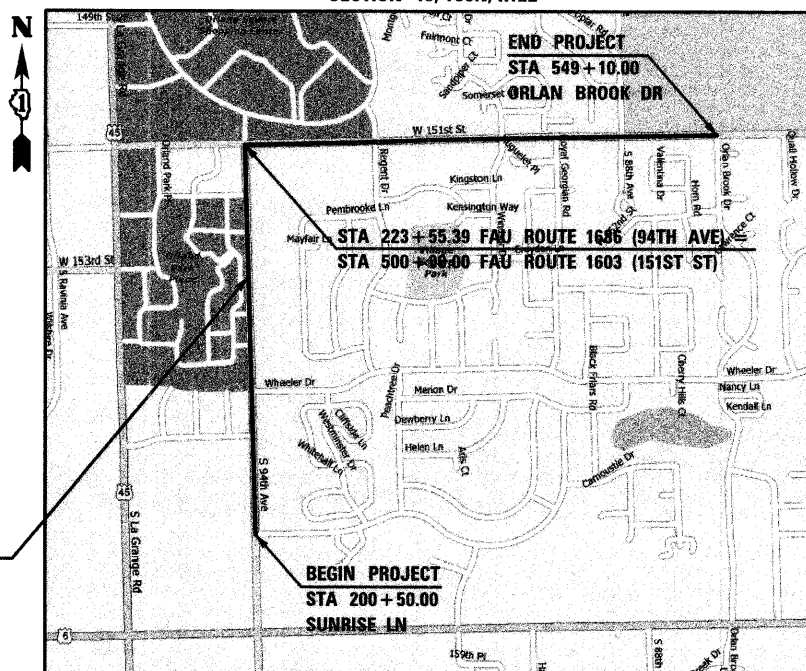
HIGHWAY STANDARDS

- 000001-05 STANDARD SYMBOLS, ABBREVIATIONS AND PATTERNS
- 424001-05 CURB RAMPS FOR SIDEWALKS
- 701006-03 OFF-RD OPERATIONS, 2L, 2W, 15' (4.5 m) TO 24" (600 mm) FROM PAVEMENT EDGE
- 701501-05 URBAN LANE CLOSURE, 2L, 2W, UNDIVIDED
- 701601-06 URBAN LANE CLOSURE, MULTILANE 1W OR 2W WITH NONTRAVERSABLE MEDIAN
- 701701-06 URBAN LANE CLOSURES, MULTILANE INTERSECTIONS
- 701801-04 LANE CLOSURE, MULTILANE 1W OR 2W CROSSWALK OR SIDEWALK CLOSURE
- 701901-01 TRAFFIC CONTROL DEVICES
- 805001-01 ELECTRICAL SERVICE INSTALLATION DETAILS
- 814001-02 CONCRETE HANDHOLES
- 814006-02 DOUBLE HANDHOLES
- 857001-01 STANDARD PHASE DESIGNATION DIAGRAMS AND PHASE SEQUENCES
- 862001-01 UNINTERRUPTIBLE POWER SUPPLY (UPS)
- 877001-04 STEEL MAST ARM ASSEMBLY AND POLE 16' THROUGH 55'
- 878001-07 CONCRETE FOUNDATION DETAILS
- 880006-01 TRAFFIC SIGNAL MOUNTING DETAILS
- 886001-01 DETECTOR LOOP INSTALLATIONS
- 886006-01 TYPICAL LAYOUT FOR DETECTION LOOPS

STATE OF ILLINOIS
DEPARTMENT OF TRANSPORTATION
DIVISION OF HIGHWAYS
**PLANS FOR PROPOSED
FEDERAL AID HIGHWAY**
FAU ROUTE 1686 (94TH AVE) AND
FAU ROUTE 1603 (151ST ST)
VILLAGE OF ORLAND PARK

SECTION NO. 08-00065-00-TL
PROJECT NO. M-9003 (328)
COOK COUNTY
JOB NO. C-91-222-08

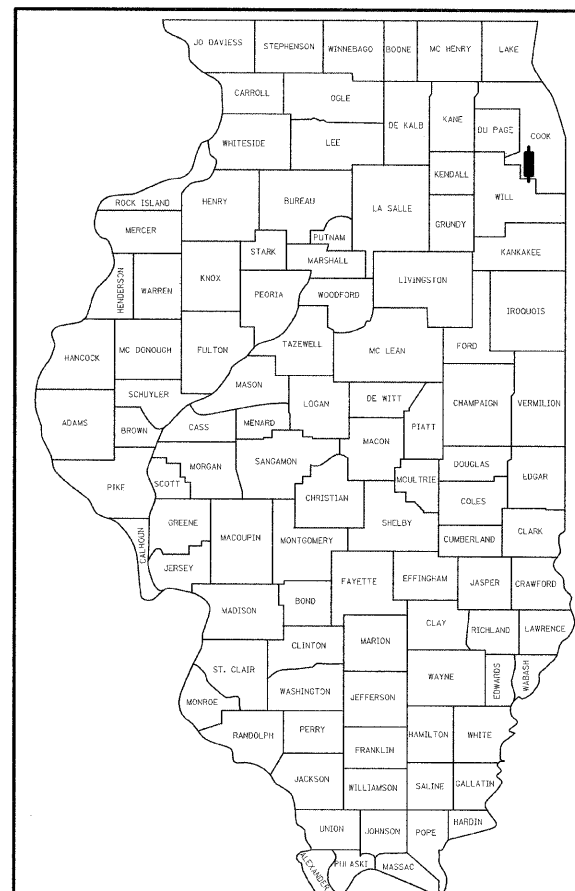
PROJECT LOCATION MAP
SECTION 15, T36N, R12E



NET LENGTH OF IMPROVEMENT FAU ROUTE 1686 (94TH AVE) = 2,305.39 FT. (0.44 MI.)
NET LENGTH OF IMPROVEMENT FAU ROUTE 1603 (151ST ST) = 4,910 FT. (0.93 MI.)
GROSS LENGTH OF IMPROVEMENT = 7,215.39 FT. (1.37 MI.)
2006 ADT (151ST ST) = 19,500

SEC Group, Inc.
Engineering • Surveying • Planning • Landscape Architecture
323 Alana Drive, New Lenox, IL 60451
t. 815.462.9324 f. 815.462.9328
www.secgroupinc.com engineering@secgroupinc.com
Illinois Professional Design Firm # 184-000108

F.A.U. RTE.	SECTION	COUNTY	TOTAL SHEETS	SHEET NO.
1686/1603	08-00065-00-TL	COOK	16	1
FED. ROAD DIST. NO. 1	ILLINOIS	CONTRACT NO. 63050		



LOCATION OF SECTION INDICATED THUS: -

MUNICIPALITY

APPROVED: *[Signature]* 20
March 25, 2009
VILLAGE OF ORLAND PARK, DIRECTOR OF PUBLIC WORKS

ILLINOIS DEPARTMENT OF TRANSPORTATION

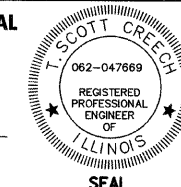
PASSED: *[Signature]* MARCH 31, 2009
CHRISTOPHER HOYT
DISTRICT ONE ENGINEER OF LOCAL ROADS & STREETS

RELEASING FOR BID
BASED ON LIMITED
REVIEW: MARCH 31, 2009
[Signature]
DEPUTY DIRECTOR OF HIGHWAYS, REGION ONE ENGINEER

**PRINTED BY THE AUTHORITY
OF THE STATE OF ILLINOIS**

PROFESSIONAL ENGINEER'S SIGN & SEAL

[Signature] 32509
T. SCOTT CREECH, P.E.
EXPIRES: 11-30-09



FIELD ENGINEER: MELCHOR MANGOBA (847) 705-4408