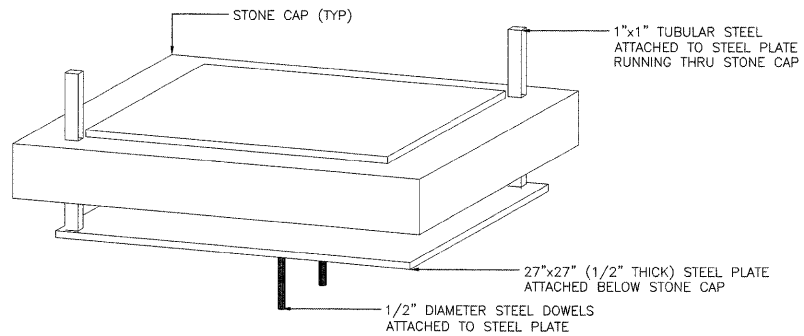


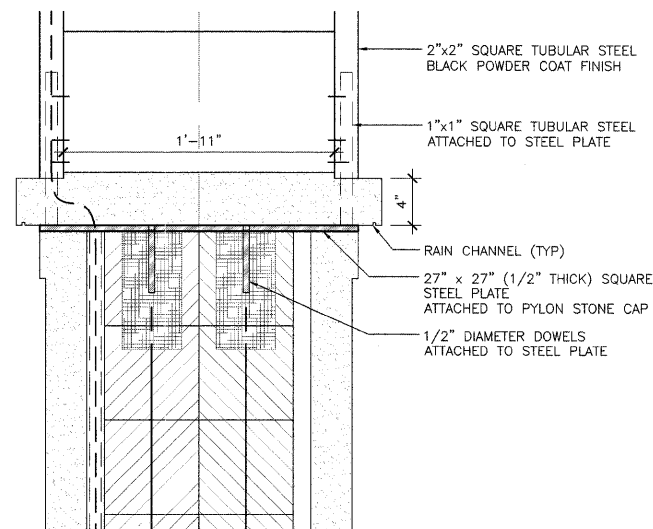
**1 LIGHTING FIXTURE MOUNTING DETAIL**

SCALE 1"=1'-0"



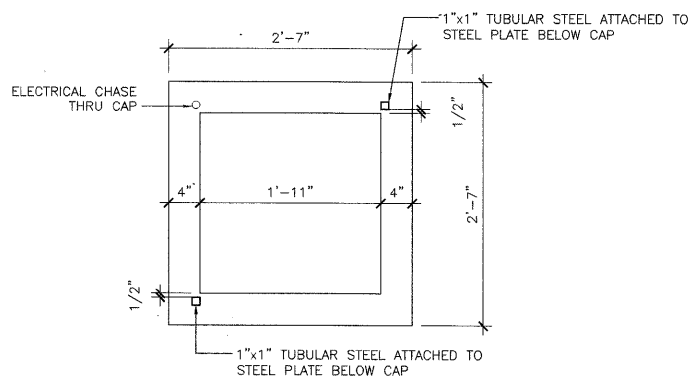
**2 PYLON CAP/TUBULAR STEEL FRAME CONNECTION**

SCALE: NOT TO SCALE



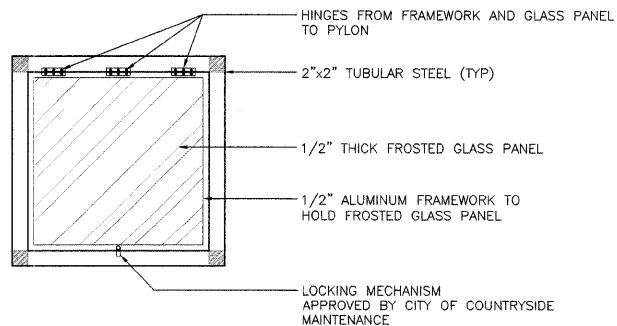
**3 PYLON CAP/TUBULAR STEEL CONNECTION 2**

SCALE 1 1/2"=1'-0"



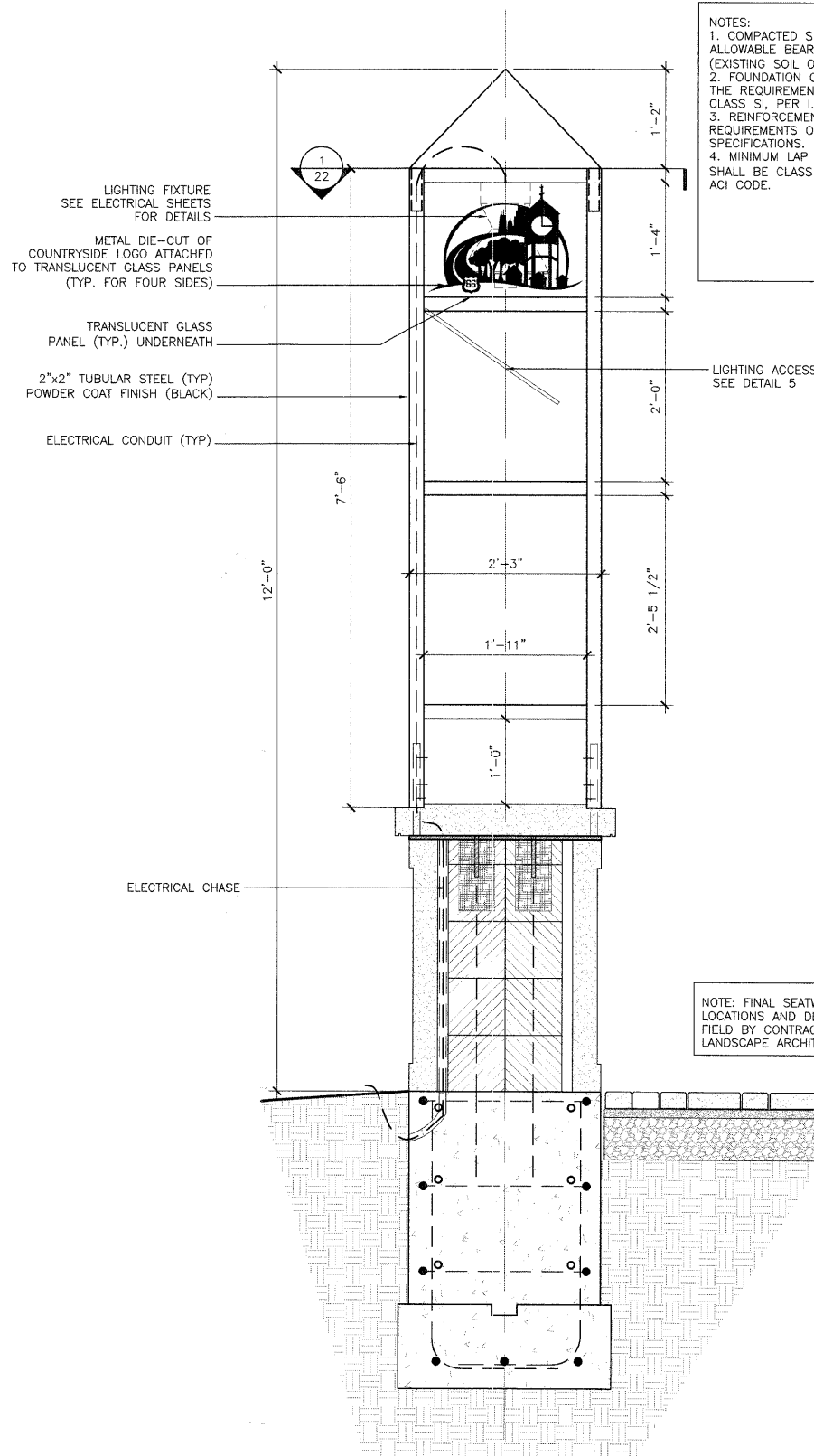
**4 PYLON CAP DETAIL**

SCALE 1"=1'-0"



**5 LIGHTING ACCESS DETAIL**

SCALE 1"=1'-0"



**6 PYLON DETAIL**

SCALE 1"=1'-0"

NOTES:  
 1. COMPACTED SUITABLE SUBGRADE TO ACHIEVE ALLOWABLE BEARING CAPACITY OF 1500 PSF (EXISTING SOIL OR STRUCTURE FILL).  
 2. FOUNDATION CONCRETE SHALL CONFORM TO THE REQUIREMENTS OF CONCRETE STRUCTURES, CLASS SI, PER I.D.O.T. STANDARD SPECIFICATIONS.  
 3. REINFORCEMENT BARS SHALL CONFORM TO THE REQUIREMENTS OF ASTM A615, GRADE 60 SPECIFICATIONS.  
 4. MINIMUM LAP LENGTH FOR REINFORCING BARS SHALL BE CLASS "B" TENSION LAP AS DEFINED BY ACI CODE.

NOTE: FINAL SEATWALL/PILLAR/PYLON/UNIT PAVER LOCATIONS AND DIMENSIONS TO BE DETERMINED IN FIELD BY CONTRACTOR AND APPROVED BY LANDSCAPE ARCHITECT.

C:\C-Work\Space\URPHY\JTW-Fs-0644\J-Trans\_07\22025\20433-001\Arch\CAD\01\_Design\IA\_Teng\_Sheet\1011A04\_PYL.dwg  
 04-30-2009 11:43:15 CREF: \\Xref\1011A01.dwg CREF: \\Xref\1011A01.dwg CREF: \\Xref\1011A01.dwg CREF: \\Xref\1011A01.dwg

FILE NAME = \$FILEL\$	USER NAME = \$USER\$	DESIGNED --	REVISED --
		DRAWN -- ICJ	REVISED --
	PLOT SCALE = \$SCALE\$	CHECKED -- BS	REVISED --
	PLOT DATE = 8/22/08	DATE -- 4/30/09	REVISED --

**STATE OF ILLINOIS  
 DEPARTMENT OF TRANSPORTATION**

**PYLON DETAILS**

SCALE: STA. TO STA.

F.A. RTE.	SECTION	COUNTY	TOTAL SHEETS	SHEET NO.
	07-00035-00-LS	COOK	42	22
CONTRACT NO. 63059				
FED. ROAD DIST. NO. 1 ILLINOIS FED. AID PROJECT				

**TENG**

TENG & ASSOCIATES, INC.  
 ENGINEERS/ARCHITECTS/PLANNERS  
 205 N. MICHIGAN AVE. CHICAGO, IL 60601  
 TELEPHONE: 312/616-0000