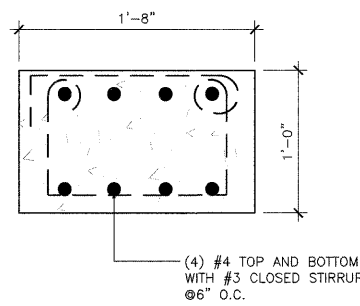


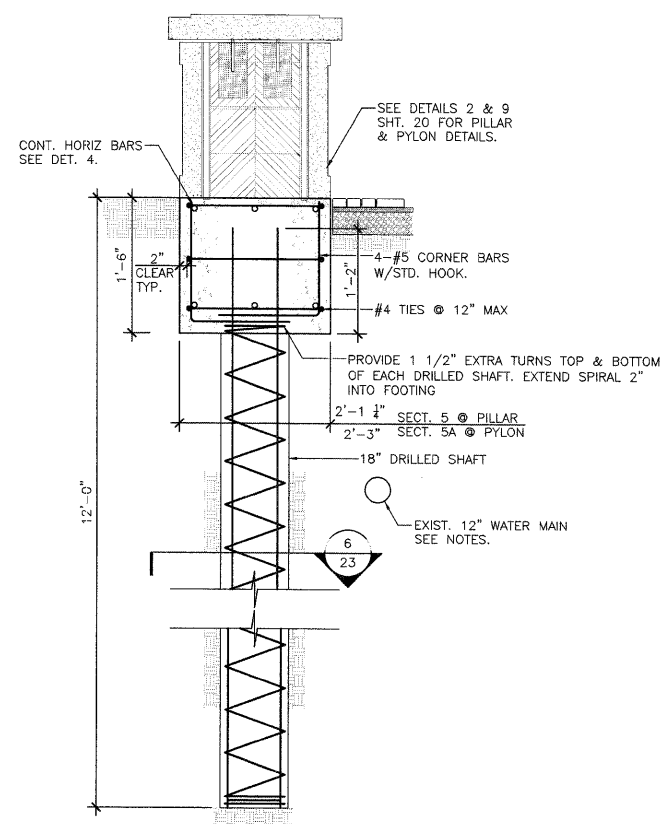
1 FOUNDATION DETAIL FOR SEATWALL AND COLUMN AT 57TH SW
SCALE 1"=1'-0"



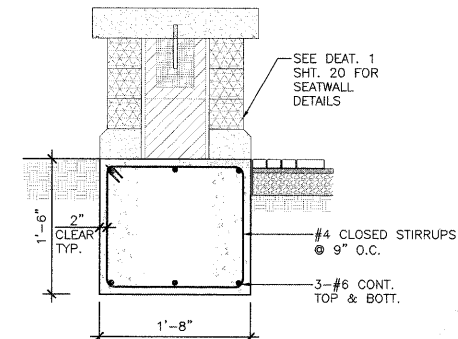
2 CONCRETE PAD DETAIL
SCALE 1 1/2"=1'-0"

NOTES:
1. COMPACTED SUITABLE SUBGRADE TO ACHIEVE ALLOWABLE BEARING CAPACITY OF 1500 PSF (EXISTING SOIL OR STRUCTURE FILL).
2. FOUNDATION CONCRETE SHALL CONFORM TO THE REQUIREMENTS OF CONCRETE STRUCTURES, CLASS S1, PER I.D.O.T. STANDARD SPECIFICATIONS.
3. REINFORCEMENT BARS SHALL CONFORM TO THE REQUIREMENTS OF ASTM A615, GRADE 60 SPECIFICATIONS.
4. MINIMUM LAP LENGTH FOR REINFORCING BARS SHALL BE CLASS "B" TENSION LAP AS DEFINED BY ACI CODE.

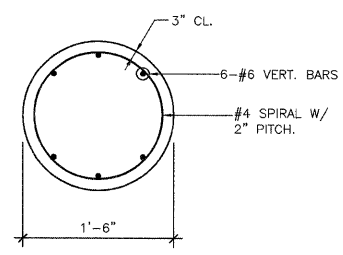
NOTE: FINAL SEATWALL/PILLAR/PYLON/UNIT PAVER LOCATIONS AND DIMENSIONS TO BE DETERMINED IN FIELD BY CONTRACTOR AND APPROVED BY LANDSCAPE ARCHITECT.



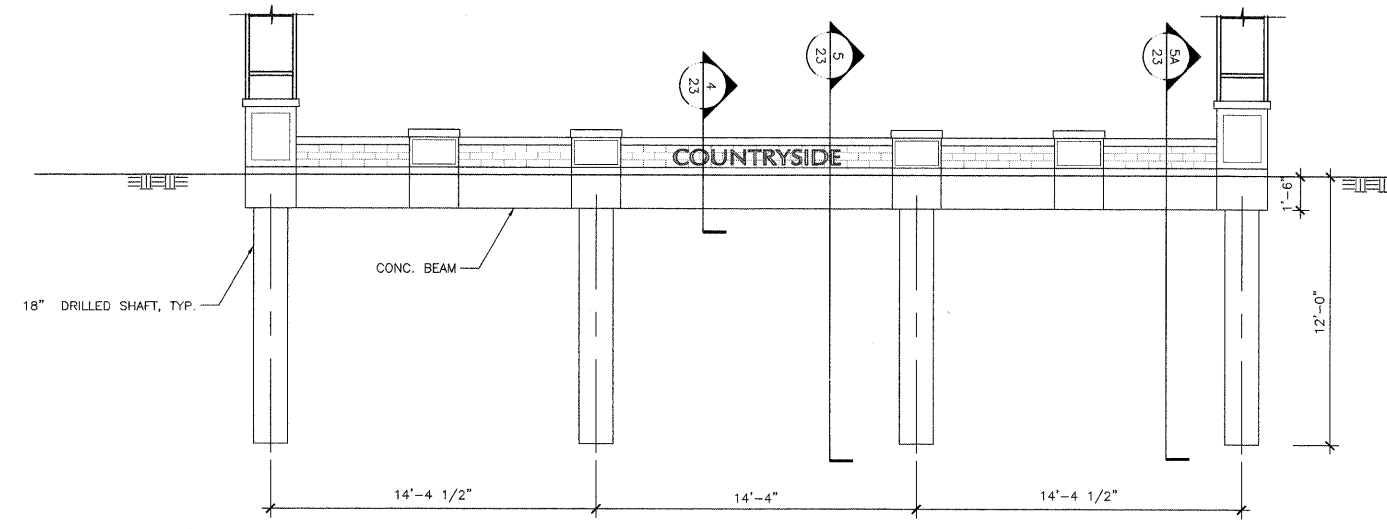
5, 5A SECTION THRU PILLAR & PYLON
SCALE N.T.S.



4 SECTION THRU SEATWALL
SCALE N.T.S.



6 SECTION
SCALE N.T.S.



3 FOUNDATION ELEVATION @ 58TH STREET - WEST SIDE
SCALE 1/8"=1'-0"

C:\IC-WorkSpace\WURPHY\JTM-FS-0044\J-D-Trans_07\2020\20433-001\Arch\CAD\01_Design\IA Teng\Sheet\cd11a005.dwg
04-30-2009 11:42:23 CREF: Xref\cd11a001.dwg XREF: Xref\cd11a001.dwg XREF: Xref\cd11a001.dwg XREF: Xref\cd11a001.dwg XREF: Xref\cd11a001.dwg

FILE NAME =	USER NAME = \$USER\$	DESIGNED --	REVISED --
\$FILEL\$		DRAWN -- ICJ	REVISED --
	PLOT SCALE = \$SCALE\$	CHECKED -- BS	REVISED --
	PLOT DATE = 8/22/08	DATE -- 4/30/09	REVISED --

**STATE OF ILLINOIS
DEPARTMENT OF TRANSPORTATION**

**57TH SW INTERSECTION
SEATWALL FOUNDATION DETAIL.**

F.A. RTE.	SECTION	COUNTY	TOTAL SHEETS	SHEET NO.
	07-00035-00-LS	COOK	42	23
CONTRACT NO. 63059				
FED. ROAD DIST. NO. 1 ILLINOIS FED. AID PROJECT				

TENG
TENG & ASSOCIATES, INC.
ENGINEERS/ARCHITECTS/PLANNERS
205 N. MICHIGAN AVE. CHICAGO, IL 60601
TELEPHONE: 312/616-0000