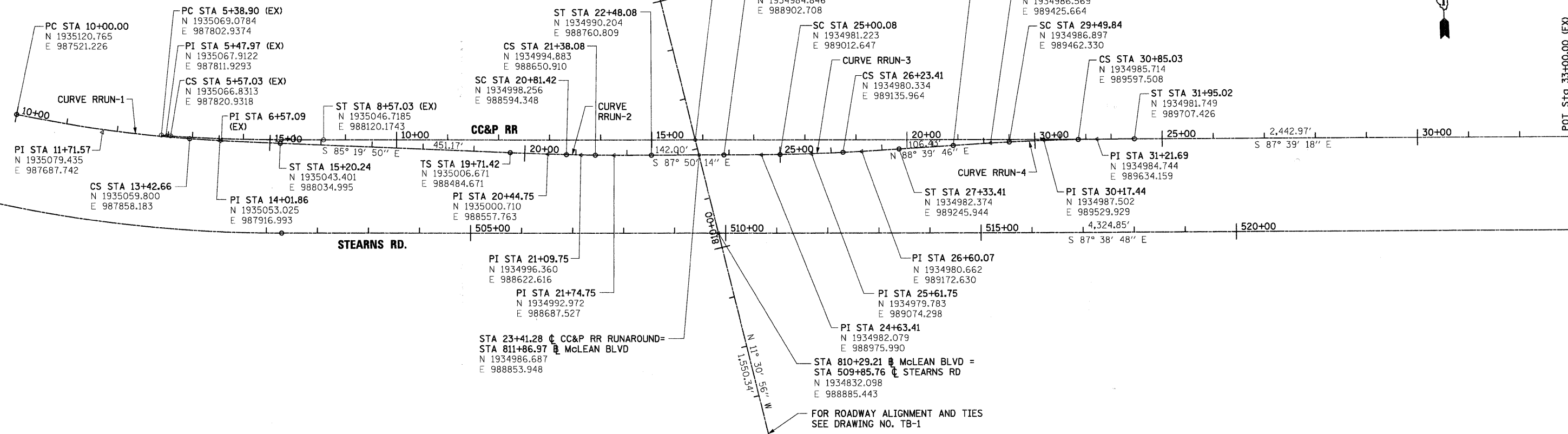


EXISTING CC&P RR CURVE CCP6			COORDINATES			
MAIN PI DATA	CURVE DATA	SPIRAL DATA		NORTH	EAST	STATION
PI 6+45.35	Δ 0° 32' 39" (LT)	L 300.00'	PC	1,935,069.0784	987,802.9374	STA 5+38.90
N 1,935,055.3864	D 3° 00' 02"	R 1,909.42'	CS	1,935,066.8313	987,820.9318	STA 5+57.03
E 987,908.5022	T 9.07'	Ø 1° 30' 00.1"	ST	1,935,046.7185	988,120.1743	STA 8+57.03
Δ 5° 02' 43" (LT)	L 18.13'	LT 200.07'				
	R 1,909.42'	ST 100.06'				



TEMPORARY RUN-AROUND CURVE RRUN-1			COORDINATES			
MAIN PI DATA	CURVE DATA	SPIRAL DATA		NORTH	EAST	STATION
PI 12+19.26	Δ 7° 22' 04" (LT)	L 177.58'	PC	1,935,120.7654	987,521.2264	STA 10+00.00
N 1,935,067.9471	D 2° 09' 00"	R 2,664.76'	CS	1,935,059.7999	987,858.1826	STA 13+42.66
E 987,734.0272	T 171.57'	Ø 0° 38' 10.9"	ST	1,935,043.4006	988,034.9950	STA 15+20.24
Δ 9° 16' 36" (LT)	L 342.66'	LT 118.39'				
	R 2,664.76'	ST 59.20'				

TEMPORARY RUN-AROUND CURVE RRUN-2			COORDINATES			
MAIN PI DATA	CURVE DATA	SPIRAL DATA		NORTH	EAST	STATION
PI 21+09.76	Δ 0° 51' 00" (LT)	L 110.00'	TS	1,935,006.6712	988,484.6712	STA 19+71.42
N 1,934,995.4251	D 1° 30' 00"	R 3,819.61'	SC	1,934,998.2558	988,594.3478	STA 20+81.42
E 988,622.5606	T 28.33'	Ø 0° 16' 30.0"	CS	1,934,994.8829	988,650.9099	STA 21+38.08
Δ 2° 30' 00" (LT)	L 56.66'	LT 73.33'	ST	1,934,990.2044	988,760.8093	STA 22+48.08
TS 138.3473	R 3,819.61'	ST 36.67'				

TEMPORARY RUN-AROUND CURVE RRUN-3			COORDINATES			
MAIN PI DATA	CURVE DATA	SPIRAL DATA		NORTH	EAST	STATION
PI 25+61.78	Δ 1° 50' 59.8" (LT)	L 110.00'	TS	1,934,984.8459	988,902.7077	STA 23+90.08
N 1,934,978.3664	D 1° 30' 00.2"	R 3,819.61'	SC	1,934,981.2226	989,012.6469	STA 25+00.08
E 989,074.2882	T 61.67'	Ø 0° 16' 30.0"	CS	1,934,980.3344	989,135.9642	STA 26+23.41
Δ 3° 30' 00" (LT)	L 123.33'	LT 73.33'	ST	1,934,982.3738	989,245.9443	STA 27+33.41
TS 171.7028'	R 3,819.61'	ST 36.67'				

TEMPORARY RUN-AROUND CURVE RRUN-4			COORDINATES			
MAIN PI DATA	CURVE DATA	SPIRAL DATA		NORTH	EAST	STATION
PI 30+17.48	Δ 2° 01' 40.5" (RT)	L 109.99'	TS	1,934,984.8579	989,352.3496	STA 28+39.84
N 1,934,989.0038	D 1° 30' 00.2"	R 3,819.61'	SC	1,934,986.8973	989,462.3297	STA 29+49.84
E 989,529.9397	T 67.60'	Ø 0° 16' 29.94"	CS	1,934,985.7137	989,597.5082	STA 30+85.03
Δ 3° 40' 40" (RT)	L 135.19'	LT 73.33'	ST	1,934,981.7494	989,707.4258	STA 31+95.02
TS 177.63'	R 3,819.61'	ST 36.66'				

FILE NAME = I:\Dgn\Civil\Sheet\tb002.dgn	USER NAME = tshenton	DESIGNED -	REVISED -	KANE COUNTY DIVISION OF TRANSPORTATION	NEW STEARNS ROAD - STAGE 2 ALIGNMENT TIES AND BENCHMARKS	F.A.P. RTE. 361	SECTION 06-00214-10-BR	COUNTY KANE	TOTAL SHEETS 219	SHEET NO. 17
PLOT SCALE = 1:100	CHECKED -	REVISED -	SCALE: 1"=100'			SHEET NO. OF SHEETS STA. 10 STA.				
PLOT DATE = 3/29/2009	DATE = 3/27/09	REVISED -	FED. ROAD DIST. NO. 1 (ILLINOIS) FED. AID PROJECT			CONTRACT NO. 63073				
			CONTRACT NO. 63073			CONTRACT NO. 63073				