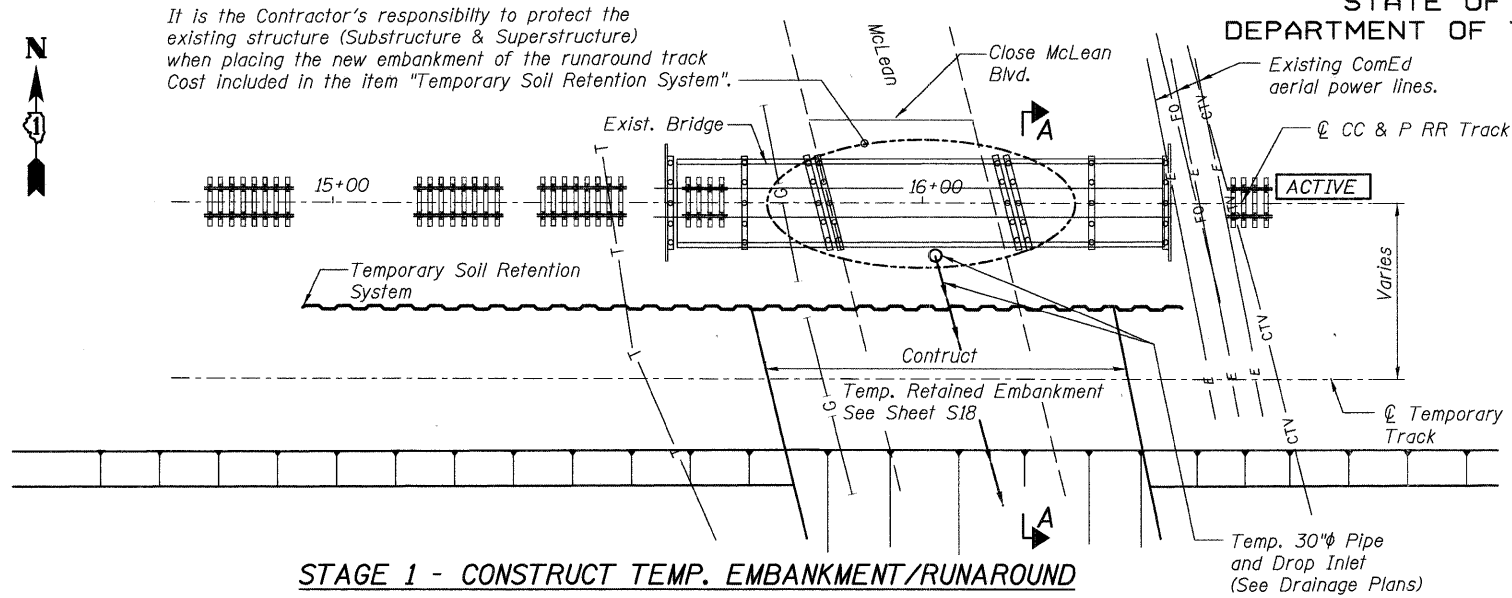
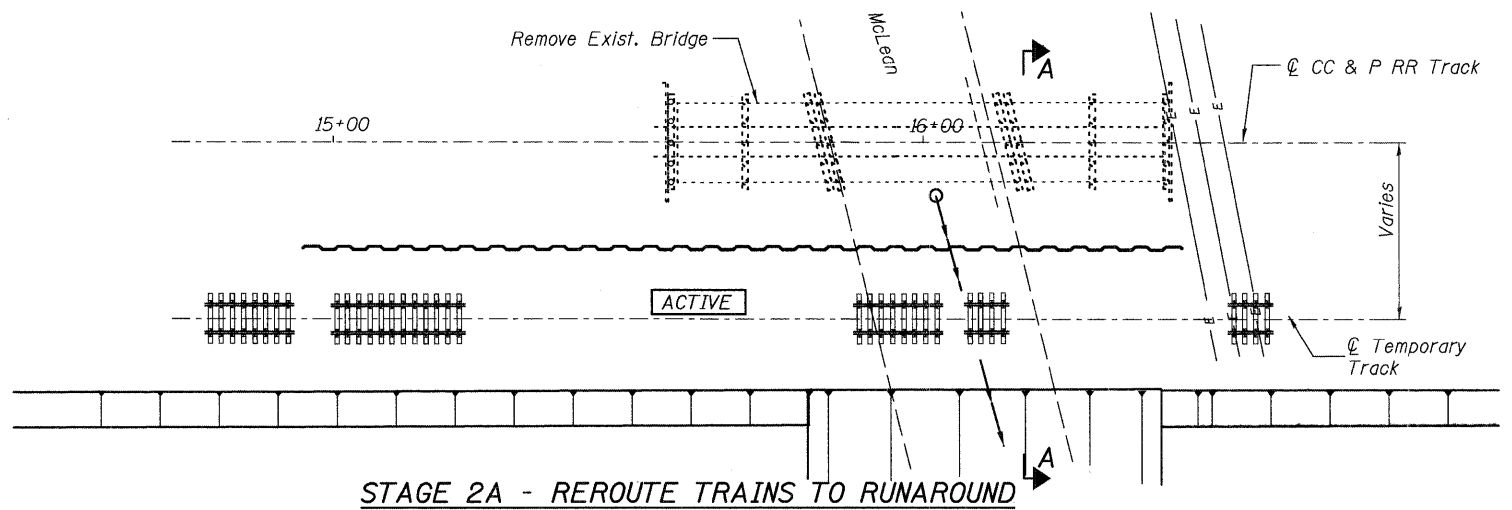


STATE OF ILLINOIS
DEPARTMENT OF TRANSPORTATION

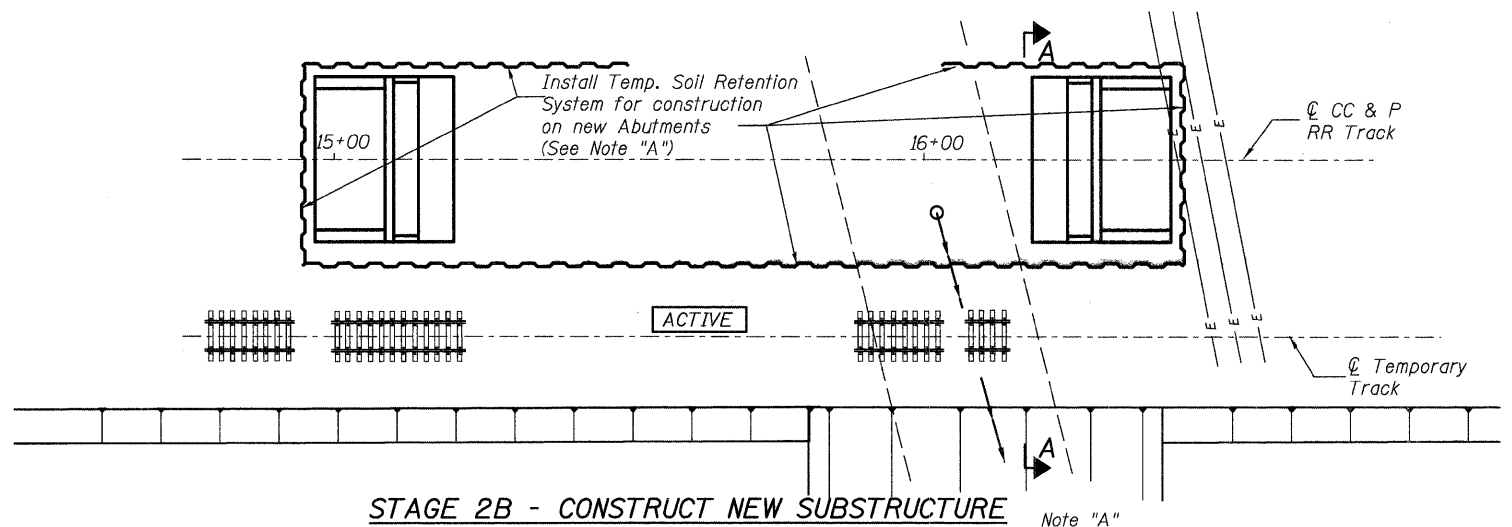
It is the Contractor's responsibility to protect the existing structure (Substructure & Superstructure) when placing the new embankment of the runaround track. Cost included in the item "Temporary Soil Retention System".



STAGE 1 - CONSTRUCT TEMP. EMBANKMENT/RUNAROUND

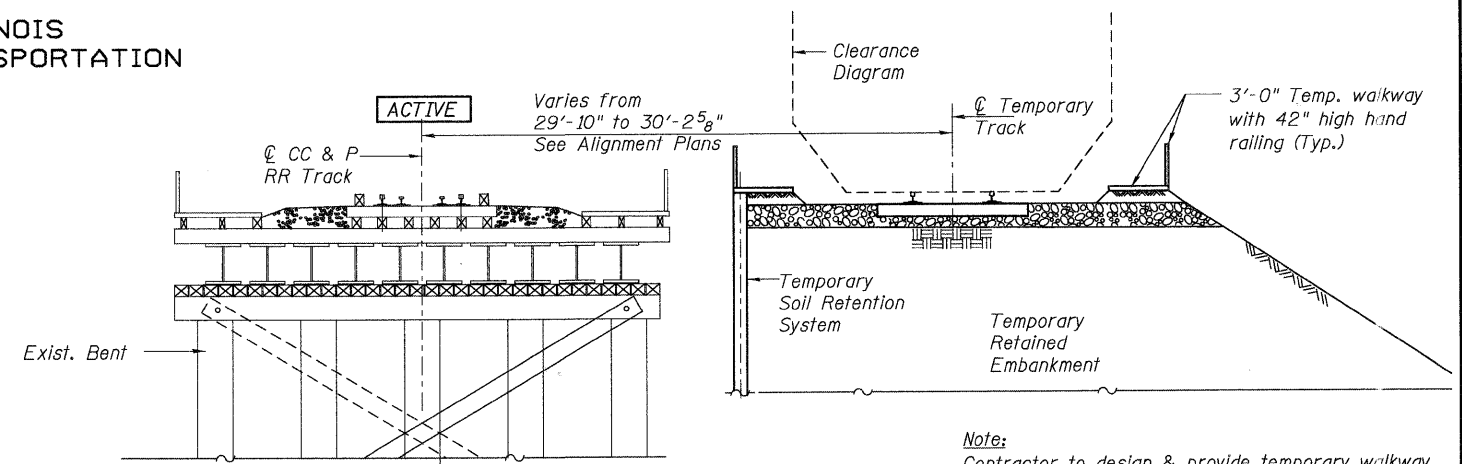


STAGE 2A - REROUTE TRAINS TO RUNAROUND

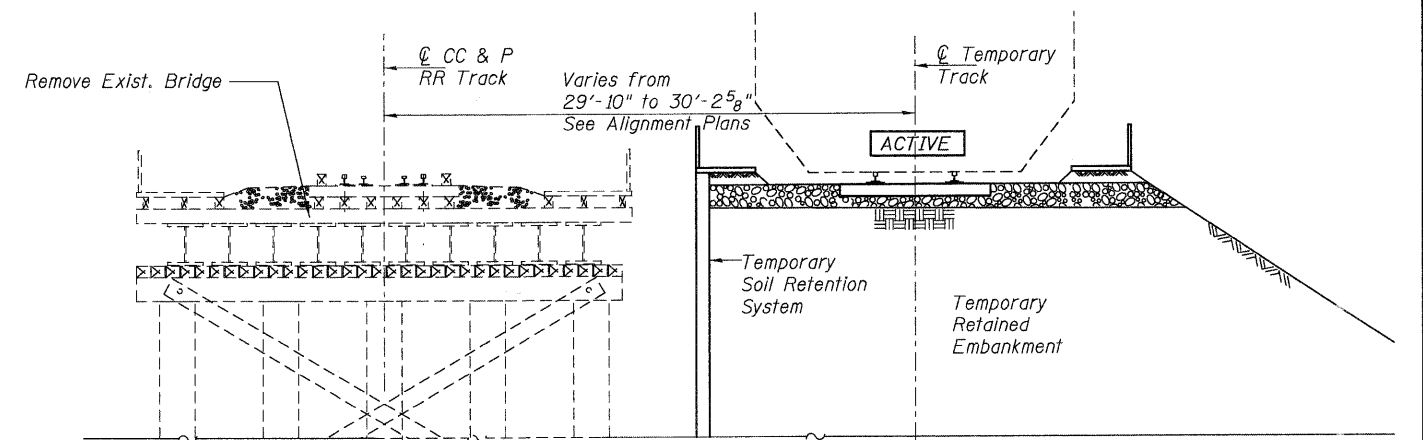


STAGE 2B - CONSTRUCT NEW SUBSTRUCTURE

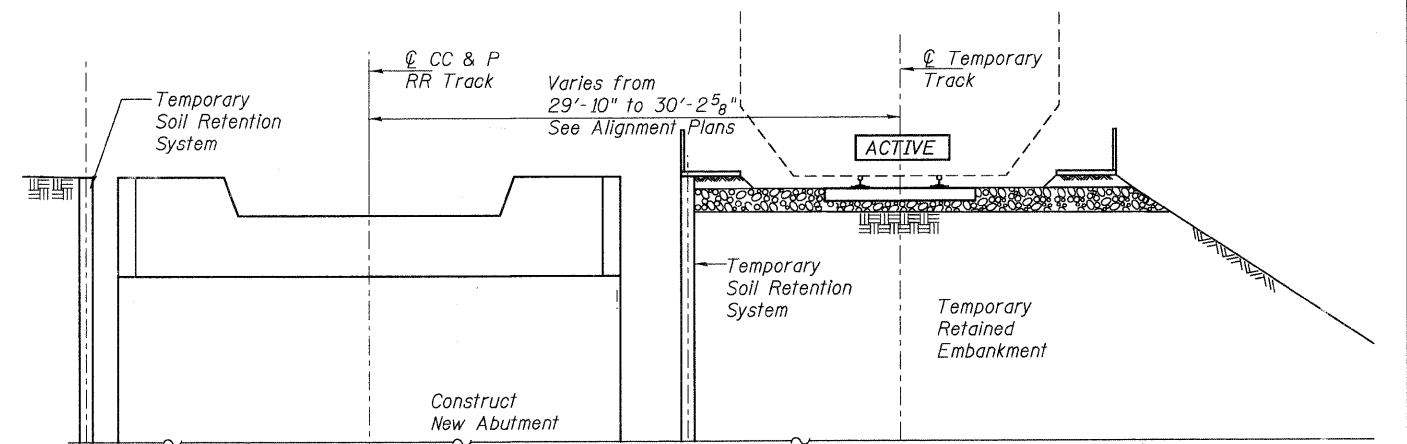
Note "A"
All work related to the designing, furnishing installing and later removing the excavation bracing will be paid for under the item "Temporary Soil Retention System".



SECTION A-A THRU STAGE 1



SECTION A-A THRU STAGE 2A



SECTION A-A THRU STAGE 2B

NOTES:

Contractor shall locate and protect all utilities. Cost of locating and protecting utilities is included in the pay item "Temporary Soil Retention System".

DESIGNED	KJH	200
CHECKED	MGB	EXAMINED
DRAWN	RJ	PASSED
CHECKED	KJH	ENGINEER OF BRIDGES AND STRUCTURES

McDonough Associates Inc.
Engineers / Architects
130 East Randolph Street
Chicago, Illinois 60601
(312) 946-8600

North America's Railroad	
FREEPORT SUBDIVISION	
BRIDGE NO. W40.07	
SHEET NO. S3	RTE.
S21 SHEETS	361
SECTION	
06-00214-02-BR	
SN 045-3163	
FED. ROAD DIST. NO. 1	

CONSTRUCTION STAGING -1
STRUCTURE NO. 045-3163

COUNTY	TOTAL SHEETS	SHEET NO.
KANE	219	130
CONTRACT NO. 63073		
ILLINOIS FED. AID PROJECT		