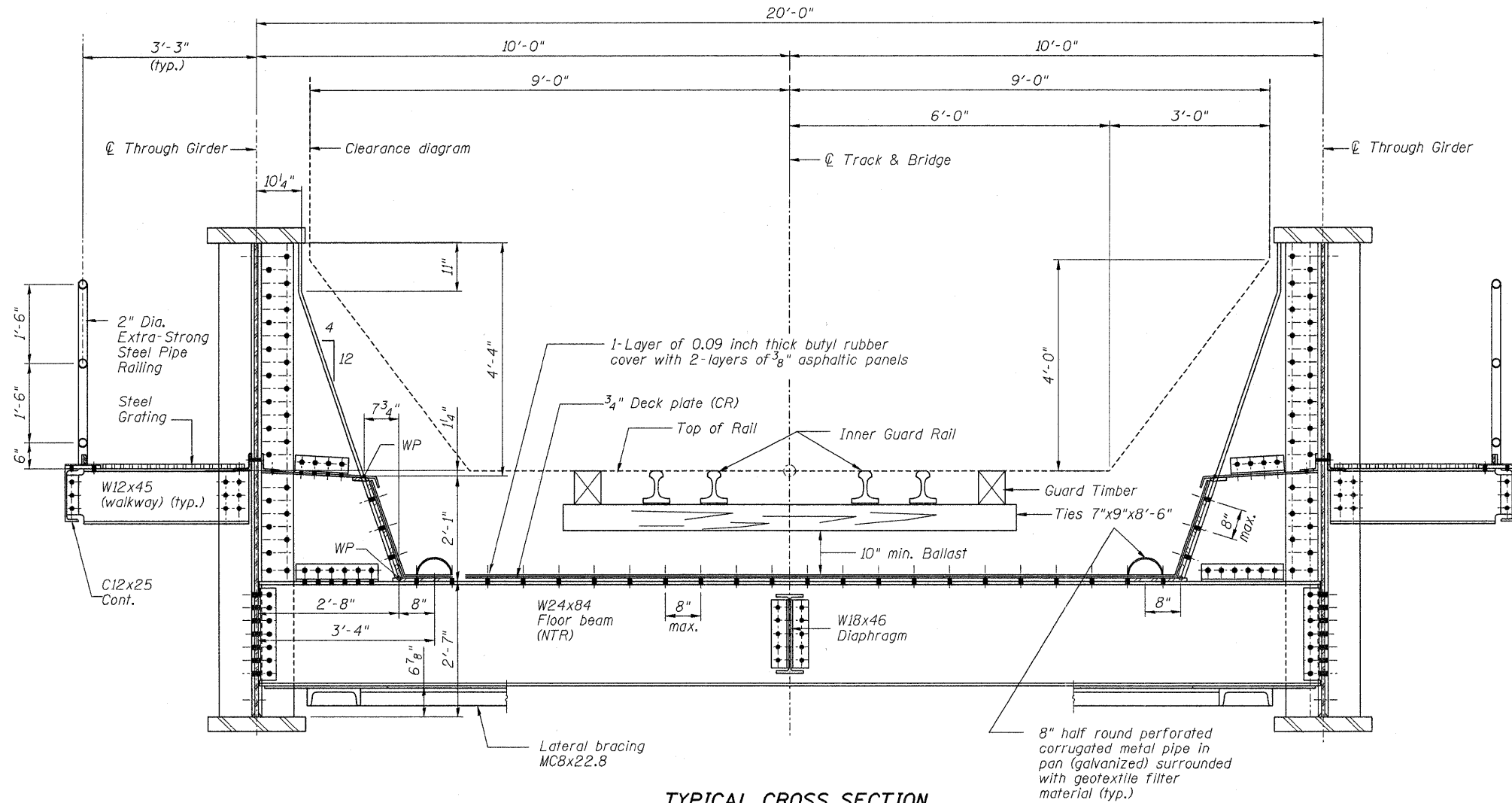
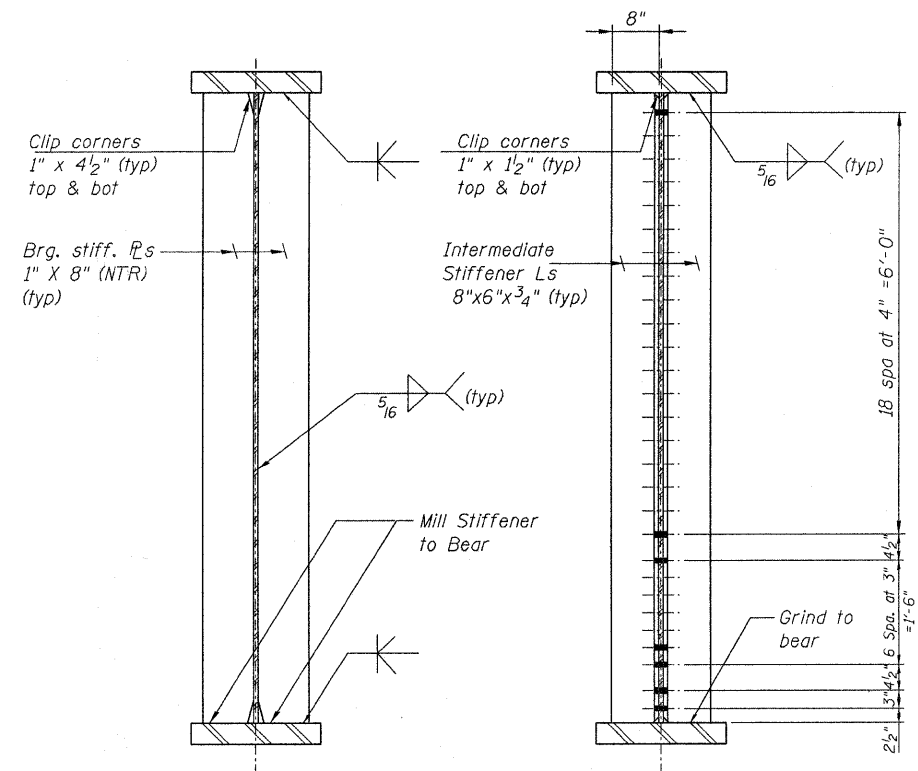


STATE OF ILLINOIS
DEPARTMENT OF TRANSPORTATION



TYPICAL CROSS SECTION



BEARING STIFFENER

INTERMEDIATE STIFFENER

NOTES:

(C.R.) Denotes Corrosion Resistant.

Membrane Waterproofing - (0.09") thickness Butyl Rubber covered with 2-layers (3/8") thick Asphaltic panels. The Membrane shall be bonded to the Floor and Ballast Stop Plates with adhesive applied to the entire surface in accordance with the recommendations of the Membrane Manufacturer, the Protective Panels shall be bonded to the Membrane and to each other with the same adhesive used for bonding the Membrane and be compatible with all materials it contacts.

All shop and field welds on the deck shall be continuous unless otherwise shown and shall result in a watertight deck.

Remove sharp edges or any projections from floor plates or welds that may damage the Butyl Rubber Membrane.

DESIGNED	KJH
CHECKED	MGB
DRAWN	RJ
CHECKED	BKB

McDonough Associates Inc.
Engineers / Architects
130 East Randolph Street
Chicago, Illinois 60601
(312) 946-8600

North America's Railroad FREEPORT SUBDIVISION BRIDGE NO. W40.07	
SHEET NO. 57	RTE.
S21 SHEETS	361

TYPICAL CROSS SECTION AND DETAILS
STRUCTURE NO. 045-3163

SECTION	COUNTY	TOTAL SHEETS	SHEET NO.
06-00214-02-BR	KANE	219	134
SN 045-3163		CONTRACT NO. 63073	
FED. ROAD DIST. NO. 1		ILLINOIS FED. AID PROJECT	